

STUDENT SURVEY



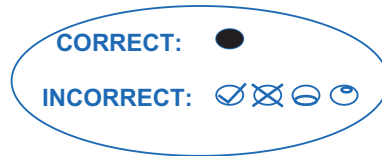
Study of Educational Technology
332 Campion Hall
Boston College
Chestnut Hill, MA 02467

Directions

Your school has been selected to participate in a statewide study of educational technology. This survey asks questions about your use of computers and your teacher's use of computers.

Read each question carefully and respond as accurately as possible. Your teacher will collect your completed survey when you are finished.

- Use only a No. 2 pencil
- Do not use ink, ballpoint, or felt tip pens
- Make solid marks that fill the response completely
- Erase cleanly any marks you wish to change
- Make no stray marks on this form



1. Please "bubble-in" the first four letters of the last names for your Science, Math, Social Studies and English teachers. For example, if your English teacher's name is Mrs. Smith, you would "bubble-in" S, M, I, T into the four columns located under "English".

Science	Math	Social Studies	English
A A A A	A A A A	A A A A	A A A A
B B B B	B B B B	B B B B	B B B B
C C C C	C C C C	C C C C	C C C C
D D D D	D D D D	D D D D	D D D D
E E E E	E E E E	E E E E	E E E E
F F F F	F F F F	F F F F	F F F F
G G G G	G G G G	G G G G	G G G G
H H H H	H H H H	H H H H	H H H H
I I I I	I I I I	I I I I	I I I I
J J J J	J J J J	J J J J	J J J J
K K K K	K K K K	K K K K	K K K K
L L L L	L L L L	L L L L	L L L L
M M M M	M M M M	M M M M	M M M M
N N N N	N N N N	N N N N	N N N N
O O O O	O O O O	O O O O	O O O O
P P P P	P P P P	P P P P	P P P P
Q Q Q Q	Q Q Q Q	Q Q Q Q	Q Q Q Q
R R R R	R R R R	R R R R	R R R R
S S S S	S S S S	S S S S	S S S S
T T T T	T T T T	T T T T	T T T T
U U U U	U U U U	U U U U	U U U U
V V V V	V V V V	V V V V	V V V V
W W W W	W W W W	W W W W	W W W W
X X X X	X X X X	X X X X	X X X X
Y Y Y Y	Y Y Y Y	Y Y Y Y	Y Y Y Y
Z Z Z Z	Z Z Z Z	Z Z Z Z	Z Z Z Z

2. Are you a boy or a girl?
 Girl
 Boy
3. Which best describes you?
 White
 Black
 Latino
 Asian
4. About how many books of your own do you have at home, not counting your school books or comic books?
 5 or fewer
 6-25
 26-50
 51-100
 more than 100
5. Where do you usually learn how to do new things with computers?
 I never learn to do new things with computers
 At home
 At school
6. What grade are you in?
 6 7 8 9 10 11 12
7. Where do you use technology (computers, AlphaSmarts, etc.) most in school:
 in your classrooms
 in a computer lab
 in the library

CENTER PERP



8. When you need help with a computer in school, how often do you ask for help from each of these people?

- A teacher
- A friend or another student
- Librarian
- Technology Specialist or Technology Aide
- Other Adults in the school (other than teachers/librarians)

Rarely, if Ever	Occasionally	Usually
<input type="radio"/>	<input type="radio"/>	<input type="radio"/>
<input type="radio"/>	<input type="radio"/>	<input type="radio"/>
<input type="radio"/>	<input type="radio"/>	<input type="radio"/>
<input type="radio"/>	<input type="radio"/>	<input type="radio"/>
<input type="radio"/>	<input type="radio"/>	<input type="radio"/>

9. How often does your **Science** teacher use a computer when teaching?

- Never
- A couple times a year
- Once every couple weeks
- At least every week

10. How often do you use a computer in **Science** class?

- Never
- A couple times a year
- Once every couple weeks
- At least every week

11. How often does your **Math** teacher use a computer when teaching? *(do not count graphing calculators)*

- Never
- A couple times a year
- Once every couple weeks
- At least every week

12. How often do you use a computer in **Math** class? *(do not count graphing calculators)*

- Never
- A couple times a year
- Once every couple weeks
- At least every week

13. How often does your **English** teacher use a computer when teaching?

- Never
- A couple times a year
- Once every couple weeks
- At least every week

14. How often do you use a computer in **English** class?

- Never
- A couple times a year
- Once every couple weeks
- At least every week

15. How often does your **Social Studies** teacher use a computer when teaching?

- Never
- A couple times a year
- Once every couple weeks
- At least every week

16. How often do you use a computer in **Social Studies** class?

- Never
- A couple times a year
- Once every couple weeks
- At least every week

17. How often do you use a computer to:

Never	Almost Never	Once a Month	Once a Week	Every Day
<input type="radio"/>	<input type="radio"/>	<input type="radio"/>	<input type="radio"/>	<input type="radio"/>
<input type="radio"/>	<input type="radio"/>	<input type="radio"/>	<input type="radio"/>	<input type="radio"/>
<input type="radio"/>	<input type="radio"/>	<input type="radio"/>	<input type="radio"/>	<input type="radio"/>
<input type="radio"/>	<input type="radio"/>	<input type="radio"/>	<input type="radio"/>	<input type="radio"/>
<input type="radio"/>	<input type="radio"/>	<input type="radio"/>	<input type="radio"/>	<input type="radio"/>
<input type="radio"/>	<input type="radio"/>	<input type="radio"/>	<input type="radio"/>	<input type="radio"/>
<input type="radio"/>	<input type="radio"/>	<input type="radio"/>	<input type="radio"/>	<input type="radio"/>

- Send and receive email
- Write first drafts on a computer
- Edit my papers using a computer
- Open files on a server or a network
- Find information on the internet
- Create a Hyperstudio or Powerpoint presentation
- Play computer games
- Work with spreadsheets/databases

18. How well are you able to:

Not Very Good	OK	Pretty Good
<input type="radio"/>	<input type="radio"/>	<input type="radio"/>
<input type="radio"/>	<input type="radio"/>	<input type="radio"/>
<input type="radio"/>	<input type="radio"/>	<input type="radio"/>
<input type="radio"/>	<input type="radio"/>	<input type="radio"/>
<input type="radio"/>	<input type="radio"/>	<input type="radio"/>
<input type="radio"/>	<input type="radio"/>	<input type="radio"/>
<input type="radio"/>	<input type="radio"/>	<input type="radio"/>

PLEASE DO NOT WRITE IN THIS AREA



SERIAL

19. Which of the statements below best describes your **personal** use of computers:
- I never use a computer.
 - When I use a computer, I am usually afraid it won't work properly or that I might break it.
 - I use a computer on my own, but sometimes have difficulty figuring out how to complete an unfamiliar task.
 - I use a computer with confidence and can figure out how to do just about anything I need to do.
20. When you want to use a computer in school is it. . .
- Always easy to find a computer
 - Usually easy to find a computer
 - Sometimes difficult to find a computer
 - Frustrating because there are not enough computers
21. How hard is it to complete homework that must be done using a computer?
Select the one response that fits best.
- We are never assigned homework that has to be done using a computer
 - Easy, because I have a computer at home to use
 - Easy, because I have easy access to computers at school
 - Hard, because everyone else is always using the computer at home
 - Hard, because we don't have a computer at home

22. When you are using a computer (*instead of paper and pencil*) to do your schoolwork, do you:

	Always	Usually	Sometimes	Never
Create a better-looking finished product (than if you didn't use a computer)	<input type="radio"/>	<input type="radio"/>	<input type="radio"/>	<input type="radio"/>
Write better	<input type="radio"/>	<input type="radio"/>	<input type="radio"/>	<input type="radio"/>
Take short cuts and "get lazy"	<input type="radio"/>	<input type="radio"/>	<input type="radio"/>	<input type="radio"/>
Spend more time working with other students in your class	<input type="radio"/>	<input type="radio"/>	<input type="radio"/>	<input type="radio"/>
Seem to understand things better when using a computer	<input type="radio"/>	<input type="radio"/>	<input type="radio"/>	<input type="radio"/>
Work harder at your assignments when using a computer	<input type="radio"/>	<input type="radio"/>	<input type="radio"/>	<input type="radio"/>
Find it easy to just copy things from CD ROMs and the internet	<input type="radio"/>	<input type="radio"/>	<input type="radio"/>	<input type="radio"/>
Get more confused when using a computer to do things	<input type="radio"/>	<input type="radio"/>	<input type="radio"/>	<input type="radio"/>
Get frustrated more easily when using a computer to do things	<input type="radio"/>	<input type="radio"/>	<input type="radio"/>	<input type="radio"/>

23. On a typical day, how much time do you spend using a computer:

In School?

- None
- 15 minutes or less
- 15-60 minutes
- An hour or two
- Over two hours

At home?

- None
- 15 minutes or less
- 15-60 minutes
- An hour or two
- Over two hours

24. How many computers, if any, do you have at home?

- 0 (If you don't have a computer at home, you do not need to answer questions 25-30)
- 1
- 2
- 3 or more

PLEASE DO NOT WRITE IN THIS AREA



SERIAL

25. How long have you had a computer at home?

- We don't have one
- Less than one year
- A year or two
- Three or four years
- As long as I can remember

26. What type of internet connection do you have at home?

- We don't have an internet connection at home.
- We have an internet connection at home but I don't know much about it.
- We use a modem (using phone line) to connect to the internet at home.
- We use a DSL or high speed cable to connect to the internet at home.

27. How many people share your home computer(s)?

- We don't have a computer at home
- Just one person uses it/them
- 2-3 people use it/them
- 4-5 people use it/them
- 6 or more people use it/them

28. If you have a computer at home, who uses it the most?

- We don't have a computer at home
- You
- Sibling (brother or sister)
- Parent/Guardian or other adult

29. When you are at home, how difficult is it for you to get on your home computer when you want to?

- I don't have a computer at home
- Often difficult
- Sometimes difficult
- Never difficult

30 How often do you use your **home** computer to:

	Every Day	Couple Times a Week	Once a Week	Once a Month	Never
play games	<input type="radio"/>	<input type="radio"/>	<input type="radio"/>	<input type="radio"/>	<input type="radio"/>
chat/instant message	<input type="radio"/>	<input type="radio"/>	<input type="radio"/>	<input type="radio"/>	<input type="radio"/>
email	<input type="radio"/>	<input type="radio"/>	<input type="radio"/>	<input type="radio"/>	<input type="radio"/>
searching the internet for school	<input type="radio"/>	<input type="radio"/>	<input type="radio"/>	<input type="radio"/>	<input type="radio"/>
searching the internet for fun	<input type="radio"/>	<input type="radio"/>	<input type="radio"/>	<input type="radio"/>	<input type="radio"/>
mp3/music	<input type="radio"/>	<input type="radio"/>	<input type="radio"/>	<input type="radio"/>	<input type="radio"/>
write papers for school	<input type="radio"/>	<input type="radio"/>	<input type="radio"/>	<input type="radio"/>	<input type="radio"/>
computer programming	<input type="radio"/>	<input type="radio"/>	<input type="radio"/>	<input type="radio"/>	<input type="radio"/>
create/maintain web sites	<input type="radio"/>	<input type="radio"/>	<input type="radio"/>	<input type="radio"/>	<input type="radio"/>
create/edit digital photos or movies	<input type="radio"/>	<input type="radio"/>	<input type="radio"/>	<input type="radio"/>	<input type="radio"/>

Thank you for completing our survey.