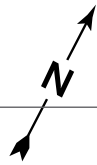


# BOSTON COLLEGE

## Brighton Campus

### KEY

- RESIDENCE HALLS
- ACADEMIC/ADMINISTRATIVE
- LIBRARY
- RECREATION/DINING
- BUS STOP (EAGLE ESCORT) B
- BLUE LIGHT EMERGENCY PHONE



**PARKING ON THE BRIGHTON CAMPUS IS BY PERMIT ONLY.**  
 All visitors to this part of campus should make sure that their parking has been arranged prior to arrival. For more information call 617-552-0151 or e-mail [transportation@bc.edu](mailto:transportation@bc.edu)

