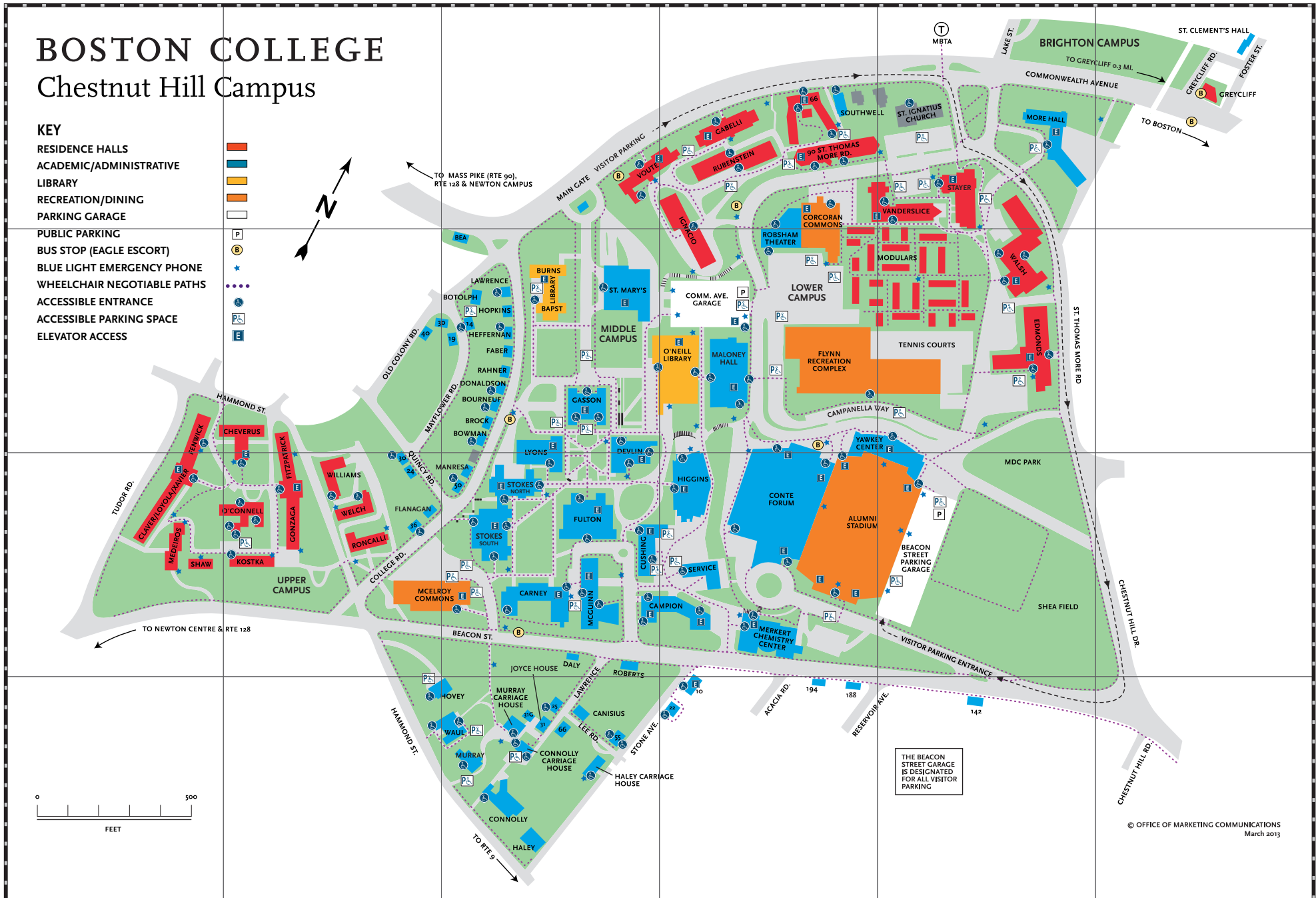
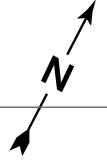


BOSTON COLLEGE

Chestnut Hill Campus

- KEY**
- RESIDENCE HALLS
 - ACADEMIC/ADMINISTRATIVE
 - LIBRARY
 - RECREATION/DINING
 - PARKING GARAGE
 - PUBLIC PARKING
 - BUS STOP (EAGLE ESCORT)
 - BLUE LIGHT EMERGENCY PHONE
 - WHEELCHAIR NEGOTIABLE PATHS
 - ACCESSIBLE ENTRANCE
 - ACCESSIBLE PARKING SPACE
 - ELEVATOR ACCESS

- RESIDENCE HALLS
- ACADEMIC/ADMINISTRATIVE
- LIBRARY
- RECREATION/DINING
- PARKING GARAGE
- P PUBLIC PARKING
- B BUS STOP (EAGLE ESCORT)
- * BLUE LIGHT EMERGENCY PHONE
- ⋯ WHEELCHAIR NEGOTIABLE PATHS
- ♿ ACCESSIBLE ENTRANCE
- P ACCESSIBLE PARKING SPACE
- E ELEVATOR ACCESS



THE BEACON STREET GARAGE IS DESIGNATED FOR ALL VISITOR PARKING