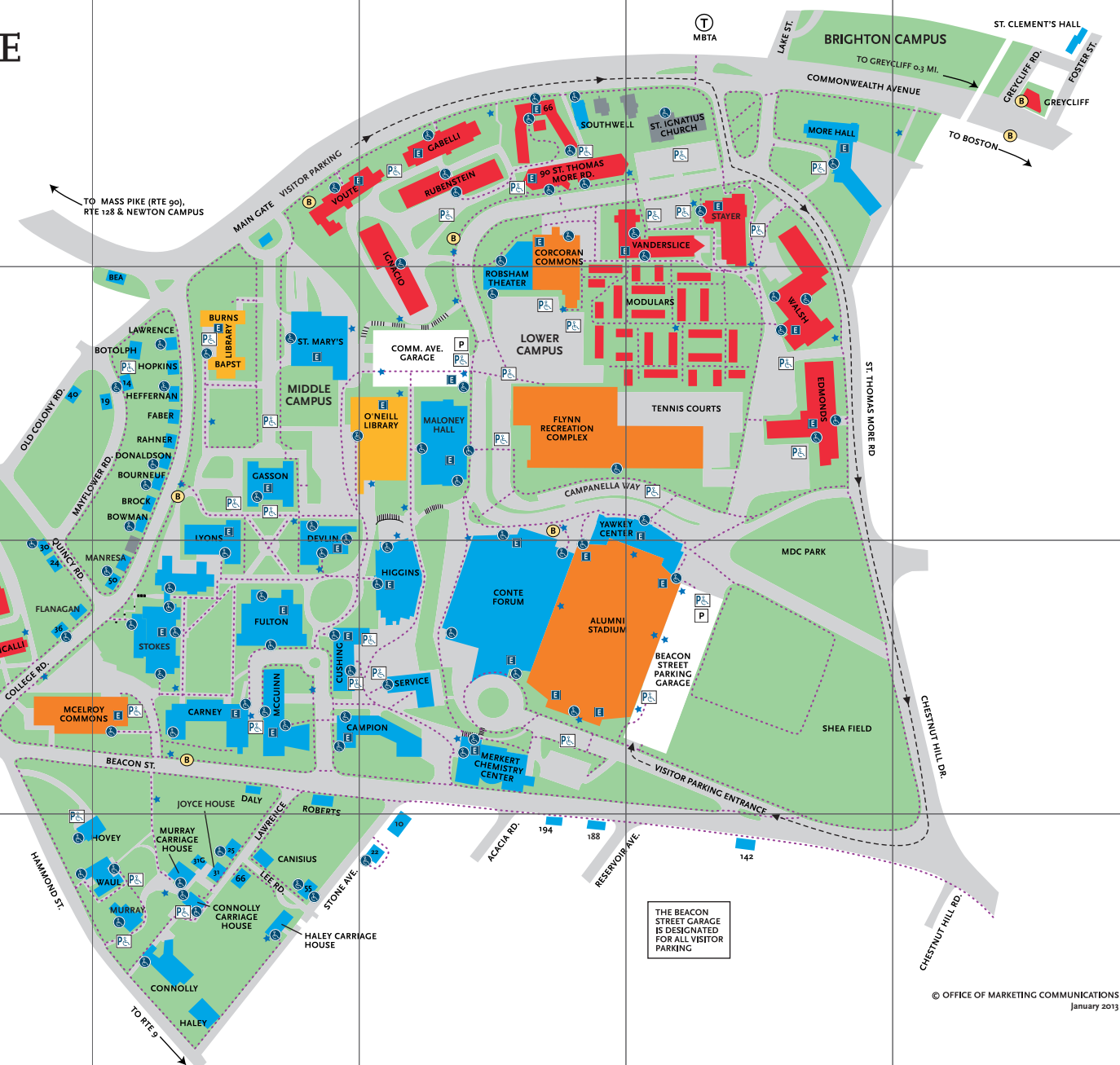
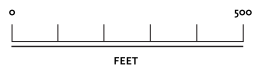
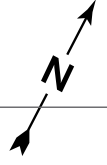
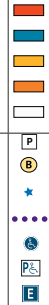


# BOSTON COLLEGE

## Chestnut Hill Campus

### KEY

- RESIDENCE HALLS
- ACADEMIC/ADMINISTRATIVE
- LIBRARY
- RECREATION/DINING
- PARKING GARAGE
- PUBLIC PARKING
- BUS STOP (EAGLE ESCORT)
- BLUE LIGHT EMERGENCY PHONE
- WHEELCHAIR NEGOTIABLE PATHS
- ACCESSIBLE ENTRANCE
- ACCESSIBLE PARKING SPACE
- ELEVATOR ACCESS



THE BEACON STREET GARAGE IS DESIGNATED FOR ALL VISITOR PARKING