

BOSTON COLLEGE CAMPUS MASTER PLAN

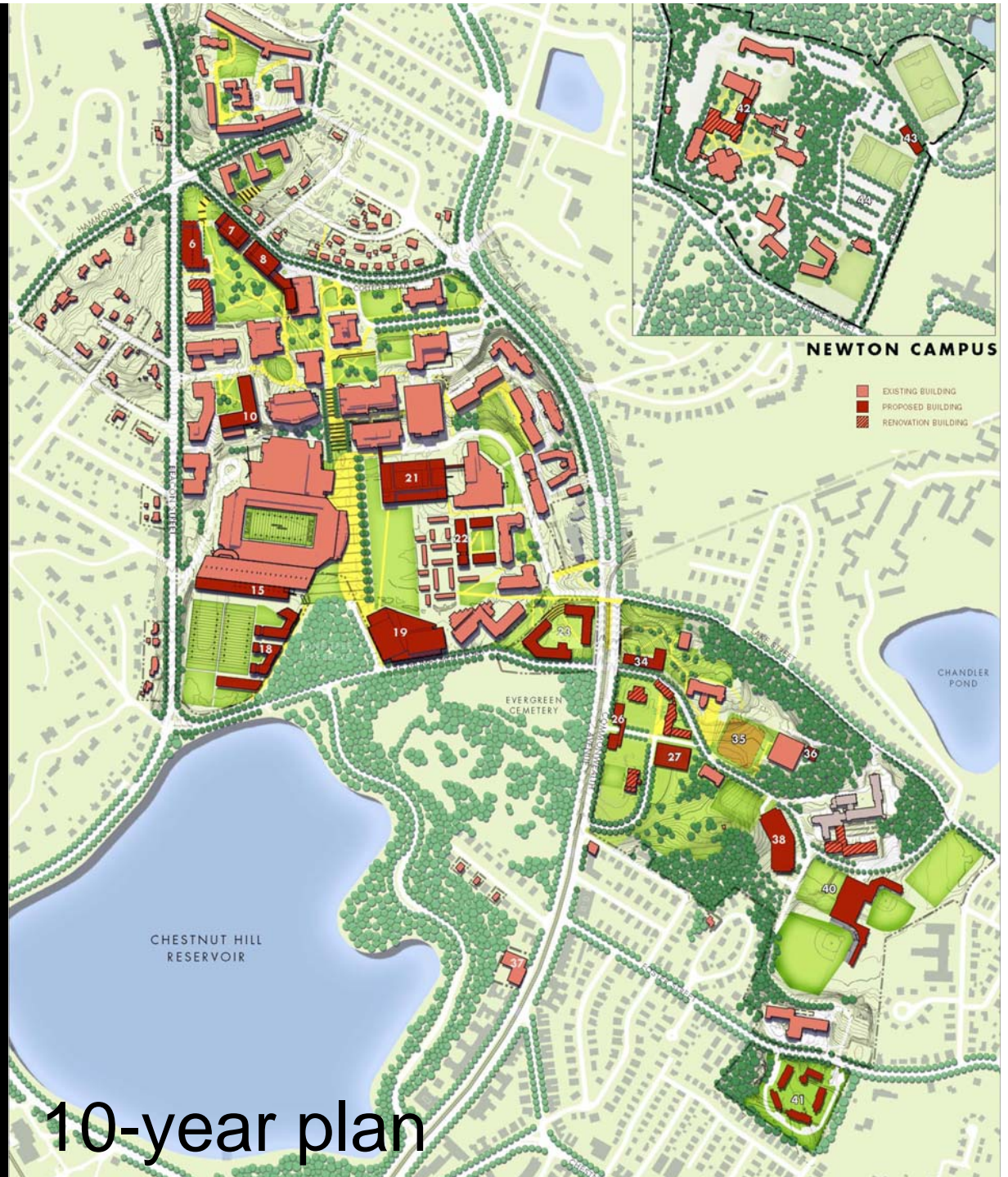


BRA PUBLIC MEETING | December 3, 2008

Institutional Master Plan Update

Agenda

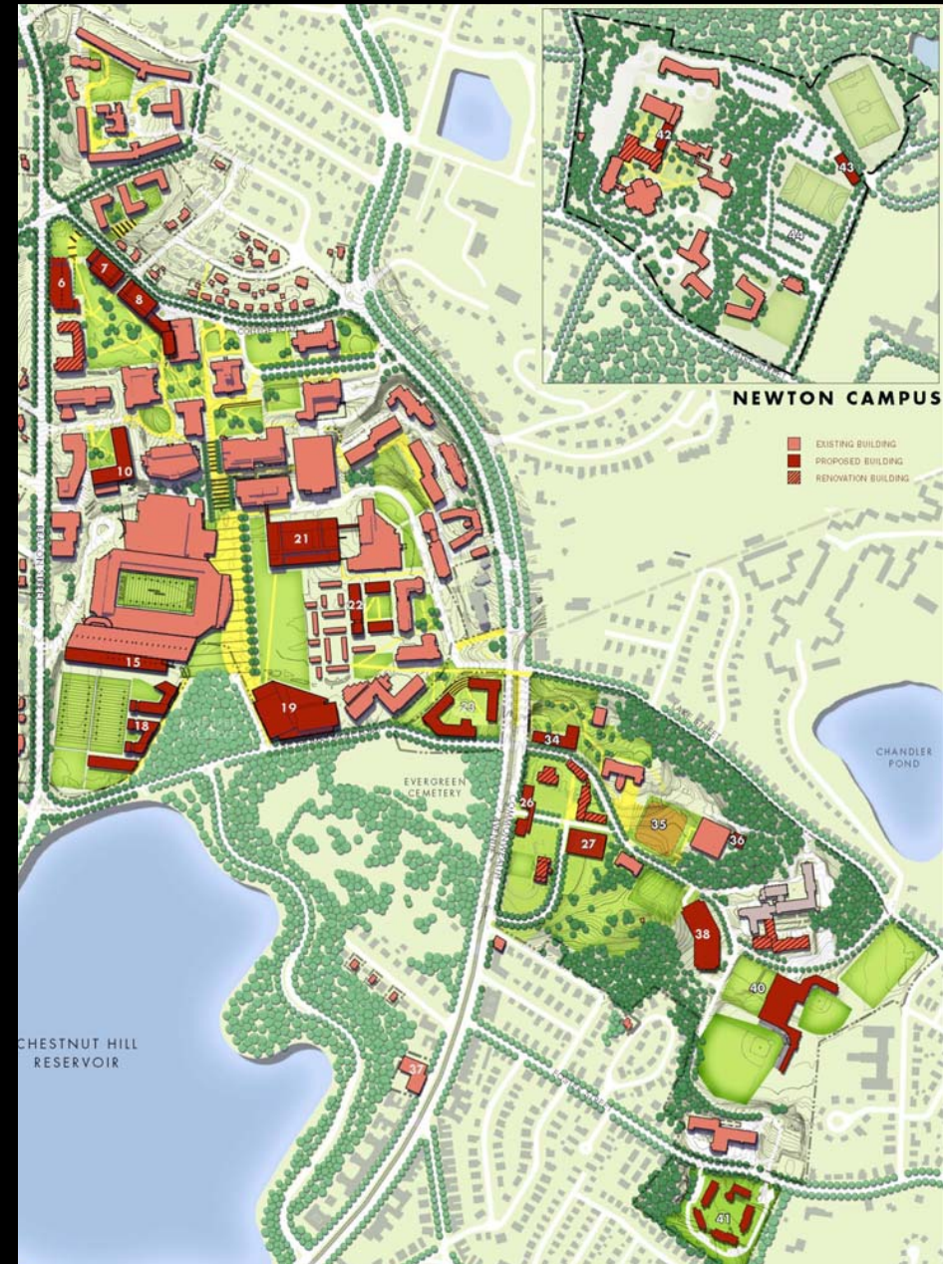
- 1) Discussion Points
- 2) Summary of Adjustments
 - Undergraduate Housing
 - Brighton Athletic Fields
 - Transportation and Parking
 - No-Build Zone
 - Future Acquisitions
- 3) Discussion



Discussion Points

Undergraduate Housing

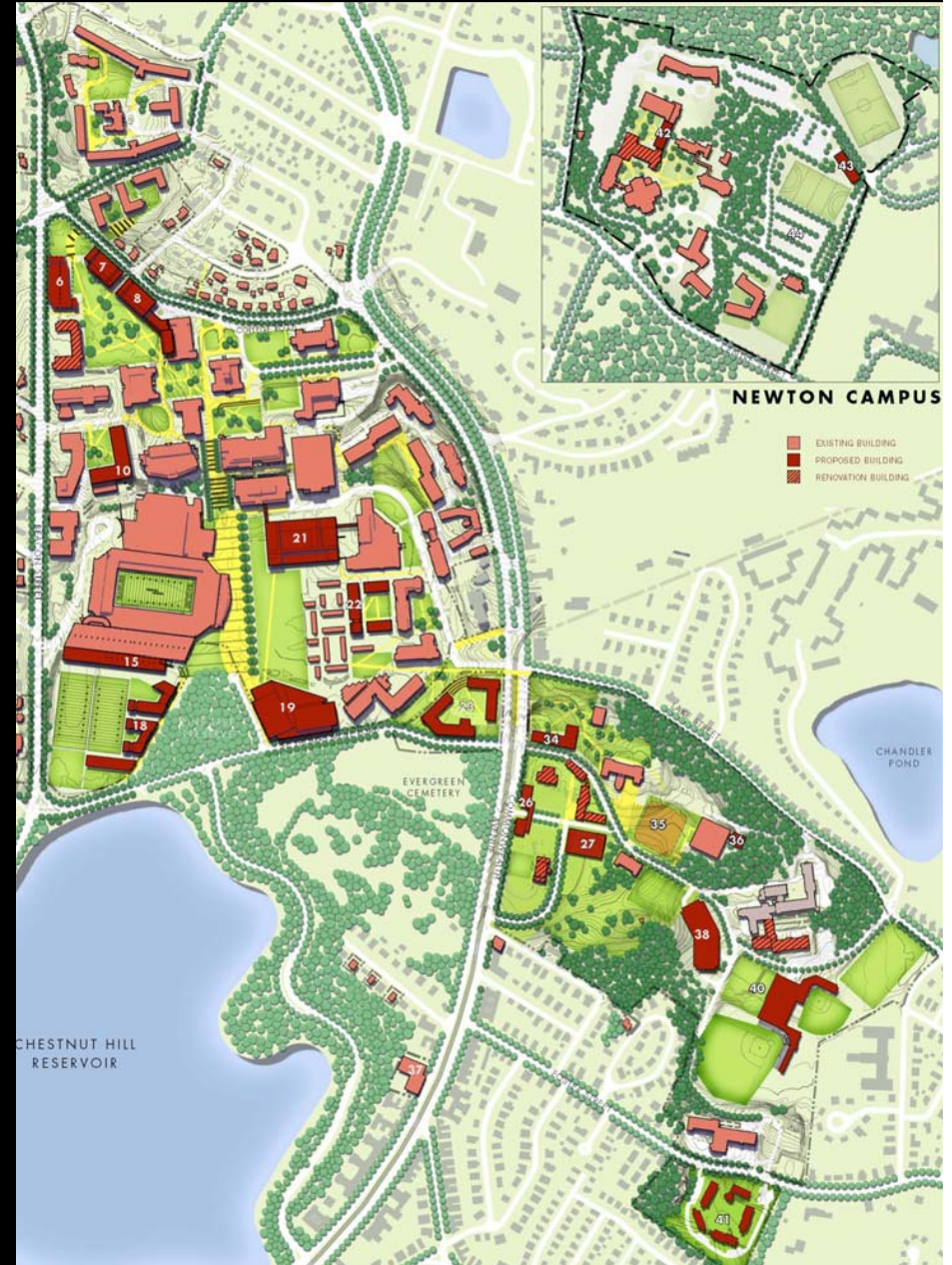
- Meet goal of housing 100% of undergraduates in university controlled housing
- Add beds to proposed residence halls on Lower Campus
- Construct 790 beds in first phase of housing on lower campus before razing Edmonds Hall
- Place 350 beds on Brighton Campus Interior site in a housing study
- Develop behavioral and student formation standards for 150 beds on Brighton Campus
- Phase the occupancy of 2000 Commonwealth Avenue and develop behavioral and formation standards



Discussion Points

Athletics

- Reduce the seating capacity of baseball and softball fields
- Revise the schedule of athletic use of the fields
- Form an advisory committee to review operating and management procedures



Discussion Points

Transportation and Parking

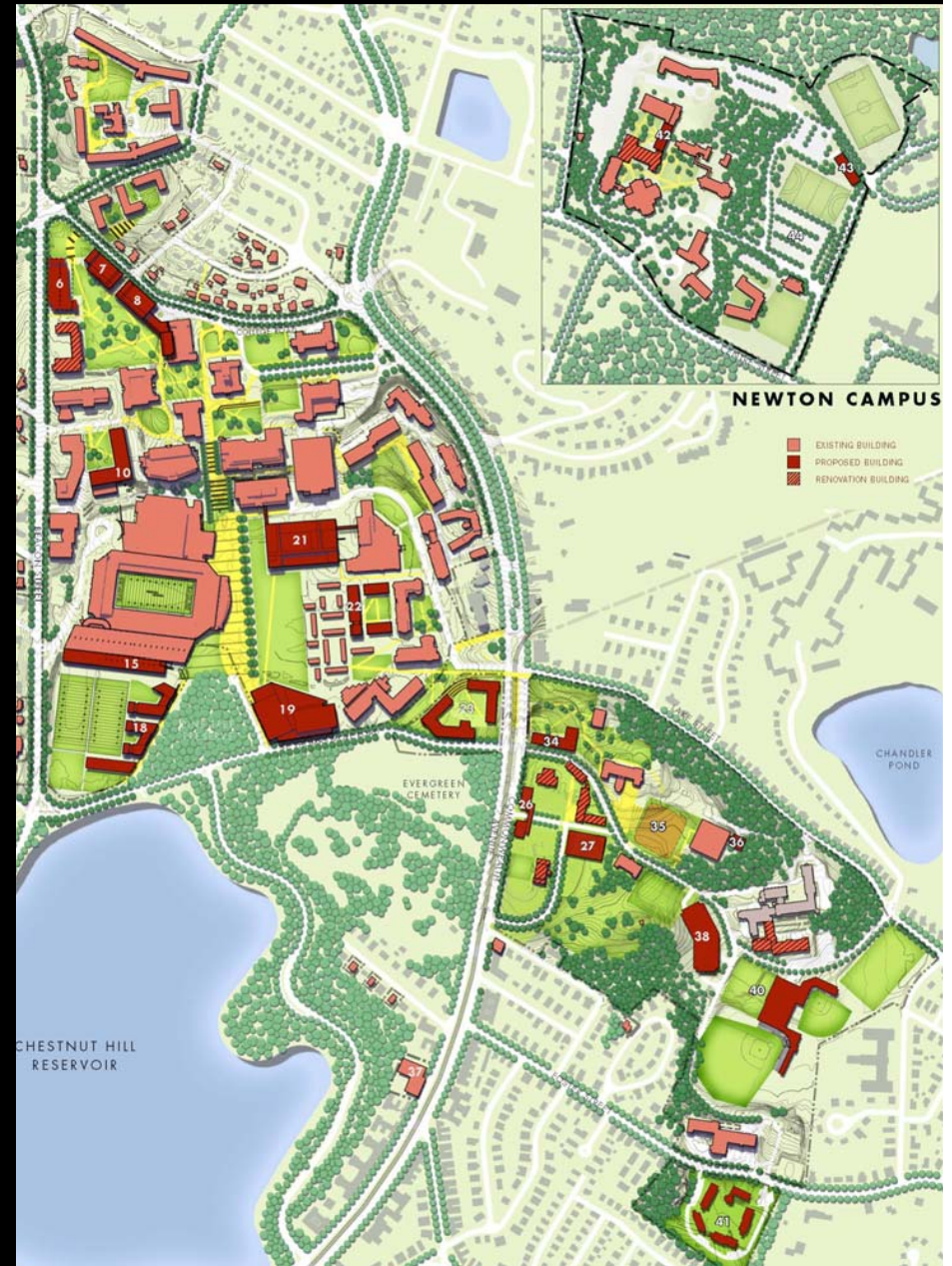
- Select one of the five access alternatives for implementation
- Delay construction of the garage until all first phase housing is completed

No-Build Zone

- Commit to a no-build zone along Lake St.
- Determine appropriate term and dimensions of the zone

Future Acquisitions

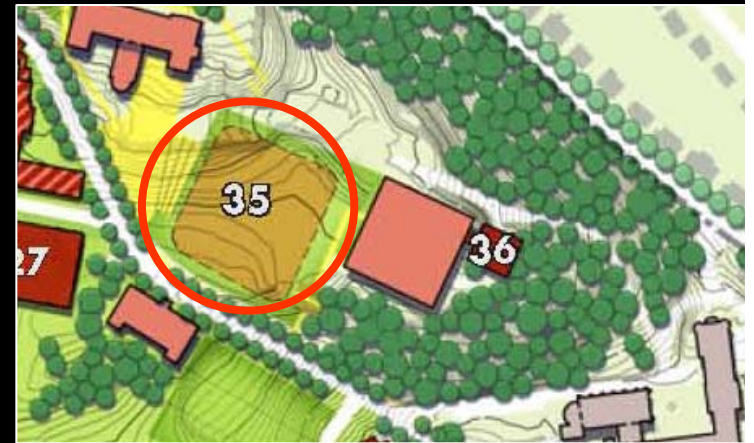
- Develop policy for future acquisitions of property in Boston



Summary of Adjustments

Undergraduate Housing

- Construct 170 of 550 Shea Field beds in first phase of housing
- Place 350 beds Brighton-Interior Site in Housing Study
- 2000 Commonwealth Avenue: Phase occupancy and develop conduct expectations and formation goals



Goal: 100% University Housing for Undergraduate Demand

Phase 1

More Hall	+ 470 beds (A)
Brighton Comm Ave	+ 150 beds (B)
Shea Field	+ 170 beds (C)
Subtotal	+ 790 new beds

Raze Edmonds	- 790 beds (D)
2000 Comm Ave	+ 560 beds (E)
Subtotal	+ 560 new beds

Phase 2

Shea Field	+ 380 beds (F)
Subtotal	+ 380 new beds

Phase 3

Mods Replacement	- 185 beds (G)
	+185 beds (H)
Total	+ 940 new beds (8,270 total = 96%)

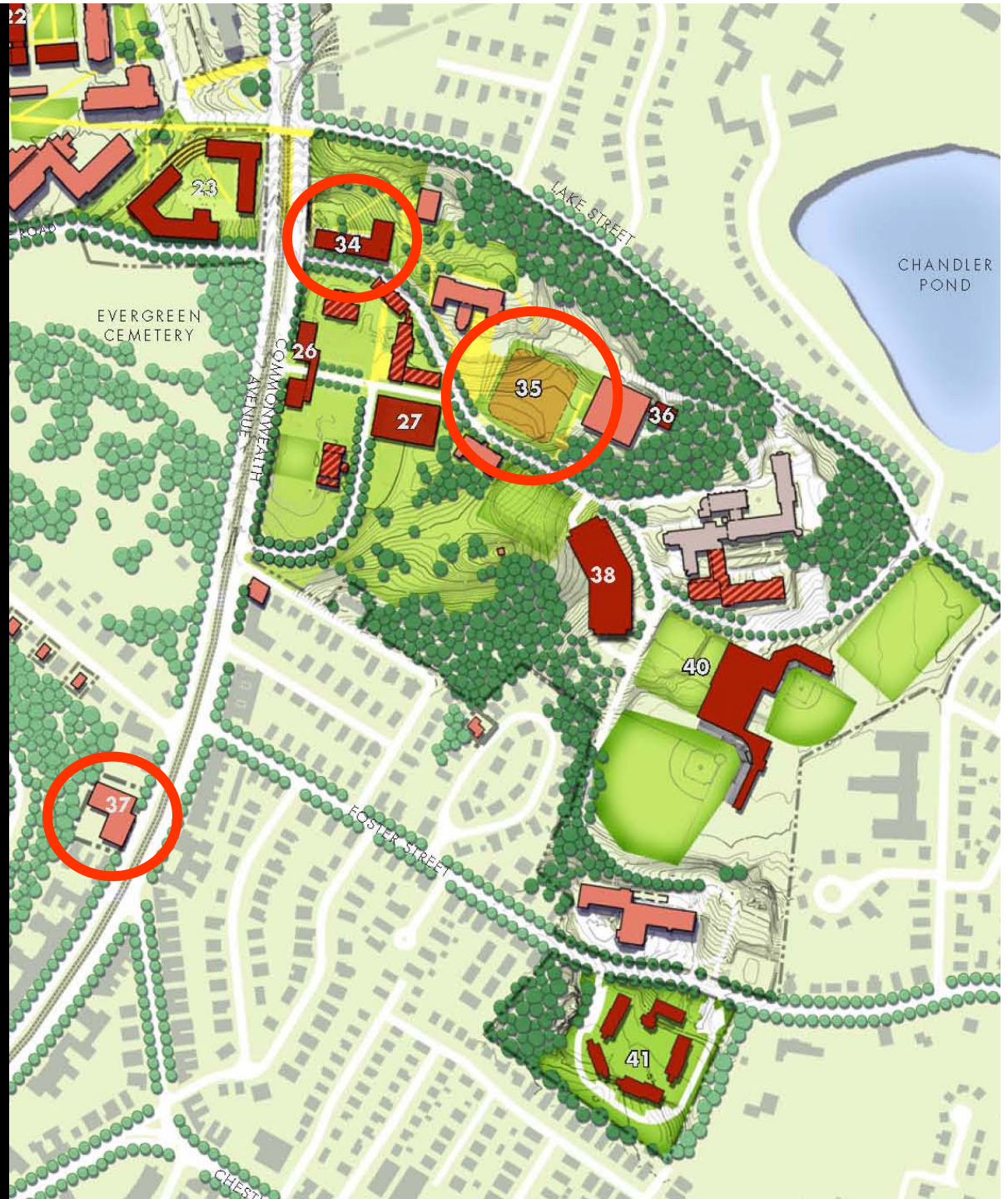
Future Undergraduate Housing

350 Undergraduate Beds: Subject to BRA Housing Study



2000 Commonwealth Avenue and Brighton Campus Housing

- BC will phase occupancy of 2000 Commonwealth Avenue starting in 2010 and completing full use by 2011
- BC will provide conduct expectations and formation goals for 2000 Commonwealth Avenue and 150 students on Brighton Campus to the BRA and Task Force
- BC will analyze alternative sites for the proposed 350 bed Brighton Interior site



Summary of Adjustments

Brighton Athletics Fields

- Create Athletics Advisory Committee
- Reduce baseball seating from 1,500 to 1,000
- Reduce softball seating from 500 to 300
- Allow seating increase to a maximum of 1,500 (baseball) and 500 (softball) after meeting operating and management standards



Athletics Advisory Committee

- Similar to Traffic Advisory Committee
- To provide advice/comments on operating and management procedures
- Committee's composition will be mutually agreed upon by City of Boston, BC, and Task Force



Athletics Schedule

September - November & February - May

Varsity Team Practice	Mon-Fri	3:00 p.m. to 7:00 p.m.
Varsity Night Games	TBD	Minimum of 10 Games for Baseball Minimum of 10 Games for Softball
Intramural and Club Sports	Mon-Fri	3:00 p.m. to 9:30 p.m.
	Sat	3:00 p.m. to 7:00 p.m.
	Sun	3:00 p.m. to 9:30 p.m.

June - August

Youth Camps / Clinics	Mon-Sat	8:00 a.m. to 9:30 p.m.
	Sun	3:00 p.m. to 7:00 p.m.

Informal Use: Fields will be available for informal use by BC individuals and groups when not reserved for organized activities

Light Usage: When fields are in use, lights will be out by 10 p.m.

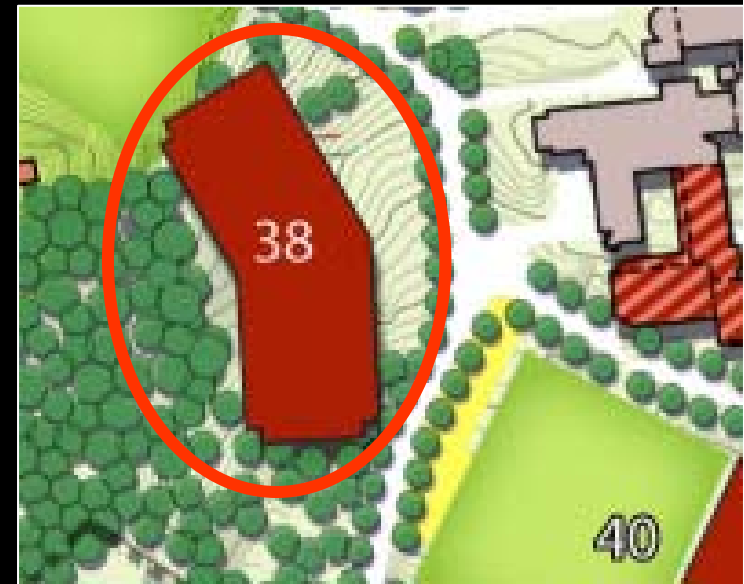
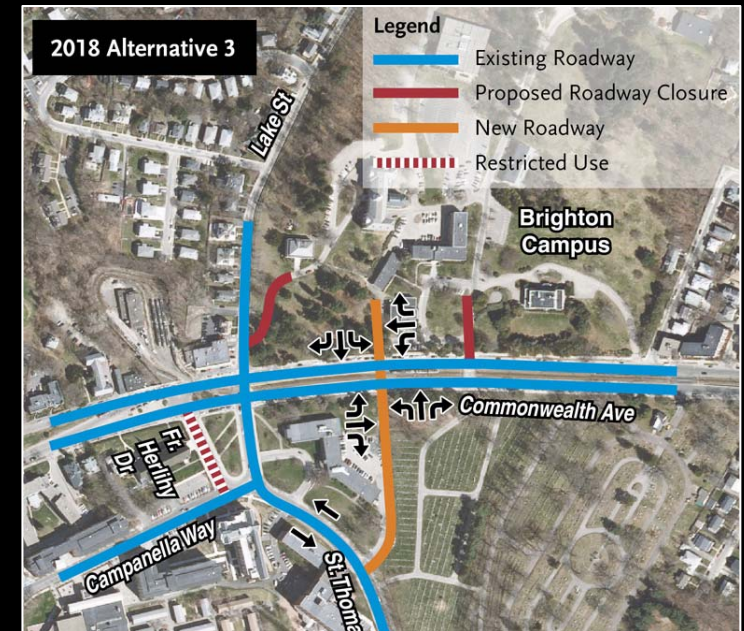
Summary of Adjustments

Transportation

- Brighton Campus Access Alternatives: BC agrees to implement Alternative 3
- Transportation Demand Management Measures: Pre-Tax T Pass Sales Program and 25% T Pass Subsidy for full-time employees

Parking – Brighton Campus

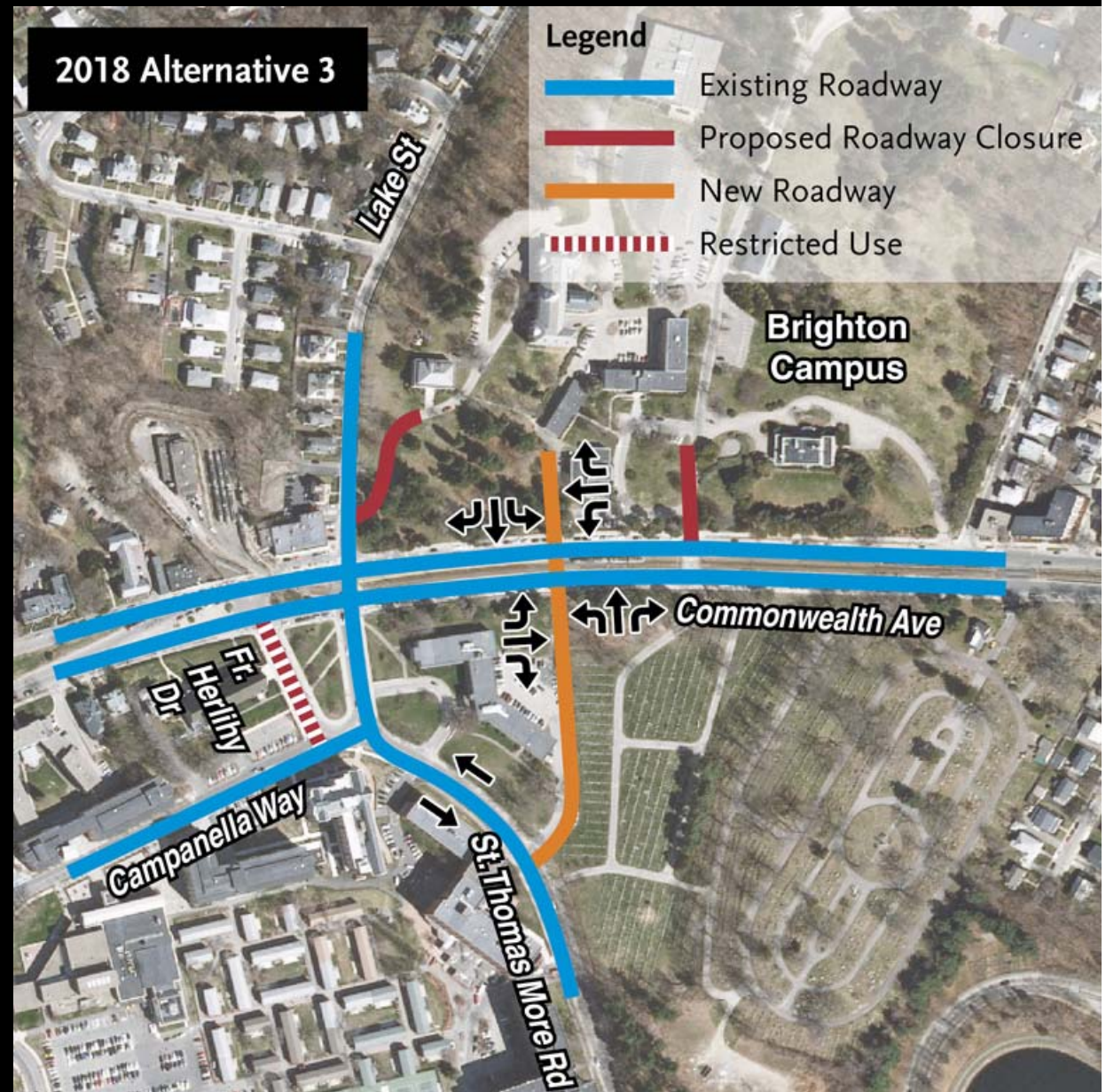
- Approval of 500 space parking garage
 - Garage construction delayed until all first phase housing is completed
 - Necessary to meet projected demand for 750-800 employees
 - Replace incremental loss of surface parking as new facilities are built



Transportation

Brighton Campus Access Alternatives:

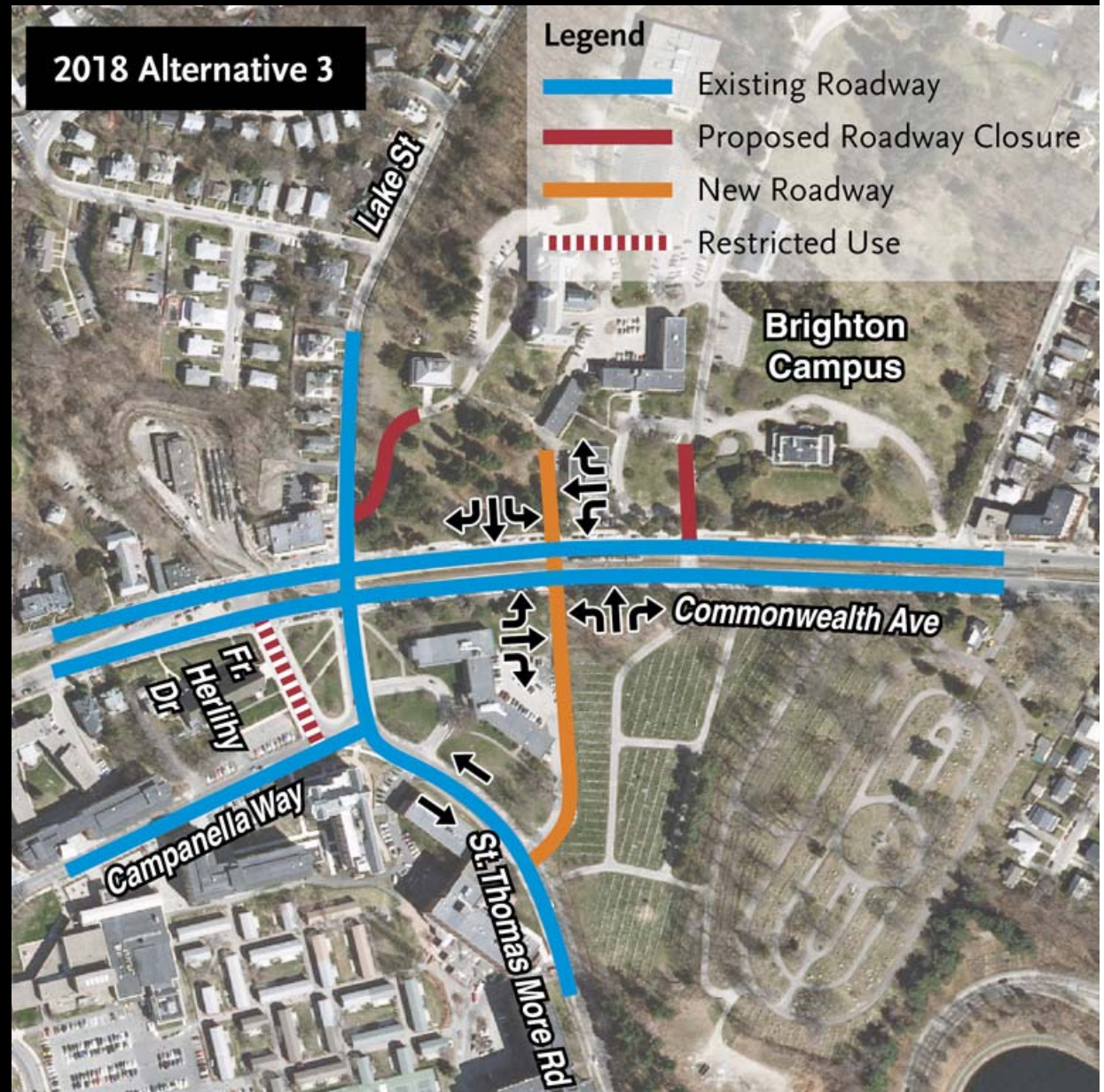
- BC agrees to implement alternative 3
- St. Thomas More Road access to Lake Street remains open
- Creates new access road to Brighton Campus at rear of More Hall Site



Transportation

Transportation Demand Management Measures

- MBTA Pass Subsidy: Pre-Tax Sale of T Passes for full-time employees (students currently offered 11% discount)
- By end of 2009, BC to provide 25% T Pass subsidy to full-time employees who forgo campus parking pass



Parking Supply

Brighton Campus

1. 500 space garage

Chestnut Hill Campus

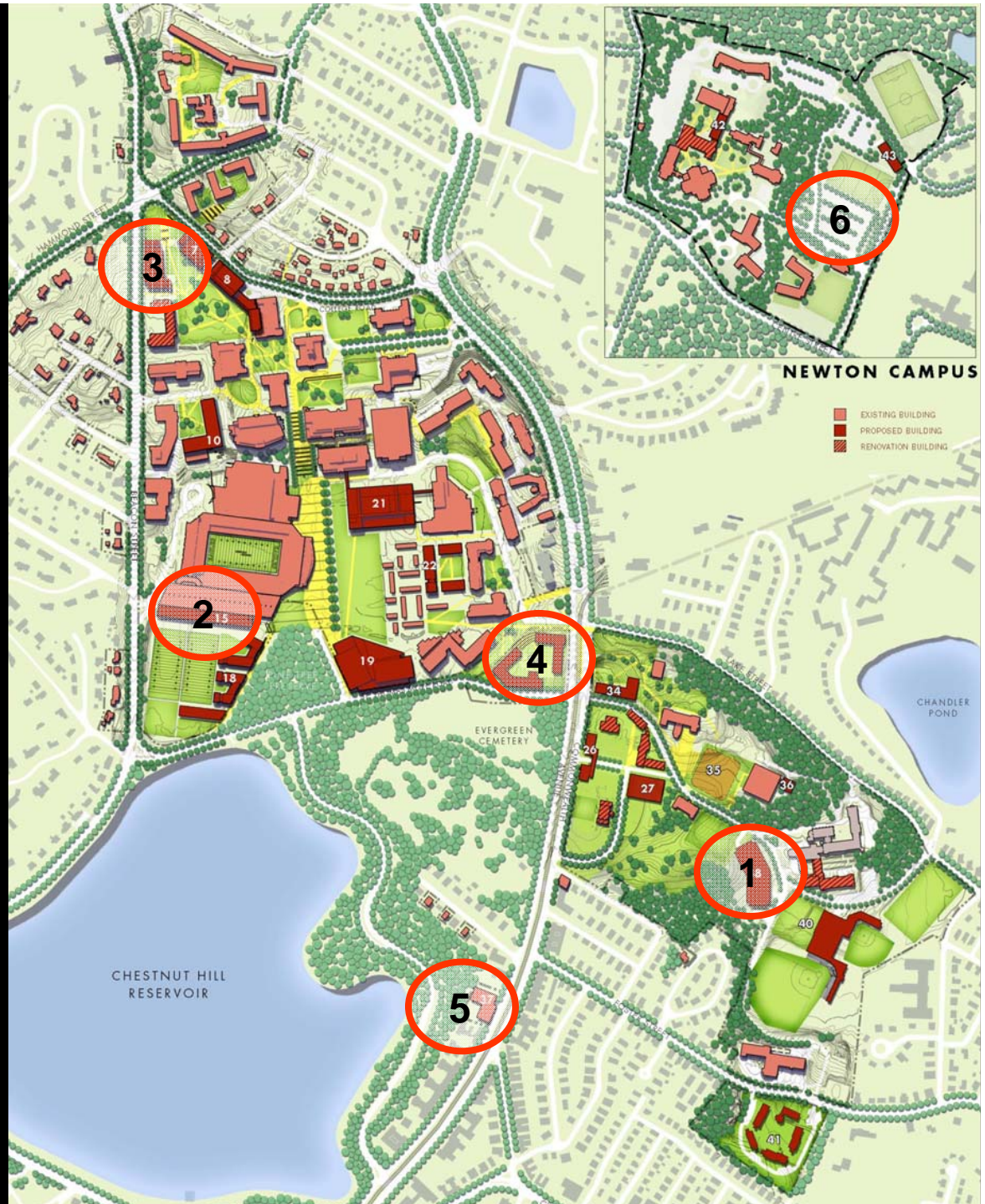
2. 350-space addition to Beacon Street Garage
3. Up to 90 spaces below Beacon Street academic building on Middle Campus
4. Up to 100 below grade spaces on More Hall site

2000 Commonwealth Ave

5. 200 spaces

Newton Campus

6. 150-space surface lot



Parking Supply Changes

	Chestnut Hill	Brighton	Newton	Total
Existing	3,011	819	675	4,505
Relocated	-713	-507	0	-1,220
New	<u>740 *</u>	<u>534</u>	<u>150</u>	<u>1,424</u>
Total	3,038	846	825	4,709
Net Change	+27	+27	+150	+204

* Includes 200 spaces at 2000 Commonwealth Avenue

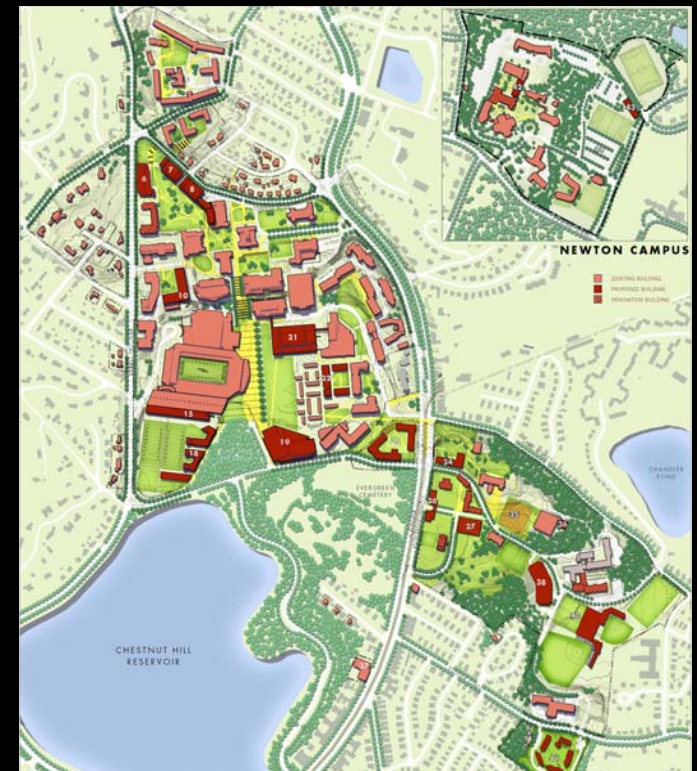
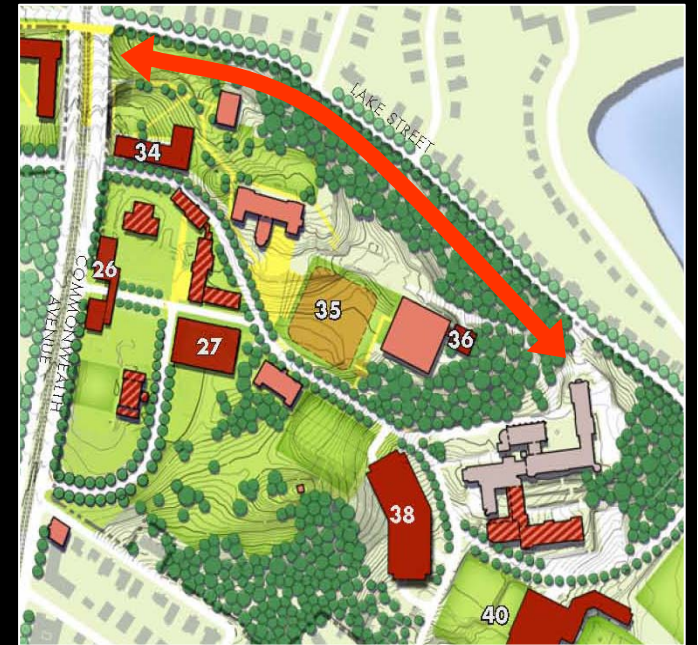
Summary of Adjustments

No-Build Zone

- 25 year term
- 50 foot wide zone
- Beginning at Commonwealth Avenue and Lake Street
- Ending before the driveway entrance to 127 Lake St. (St. John's Hall)

Future Acquisitions

- BC agrees to notify the Mayor's Office and the BRA prior to a property purchase of \$5 million or more in the City of Boston



Discussion

- Undergraduate Housing
- Brighton Athletics Fields
- Transportation and Parking
- No-Build Zone
- Future Acquisitions

