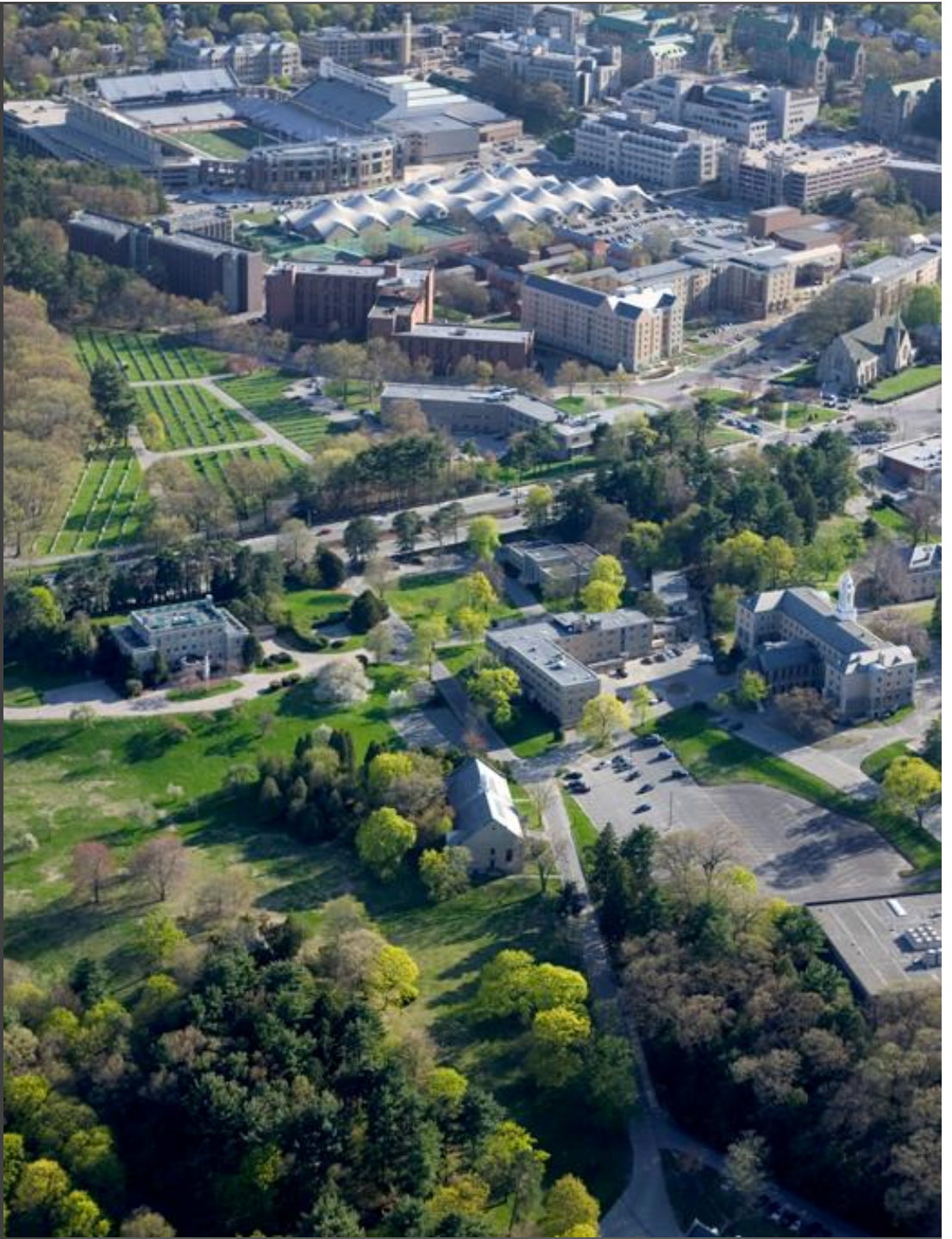


Allston Brighton Boston College  
Task Force Meeting  
January 24, 2013

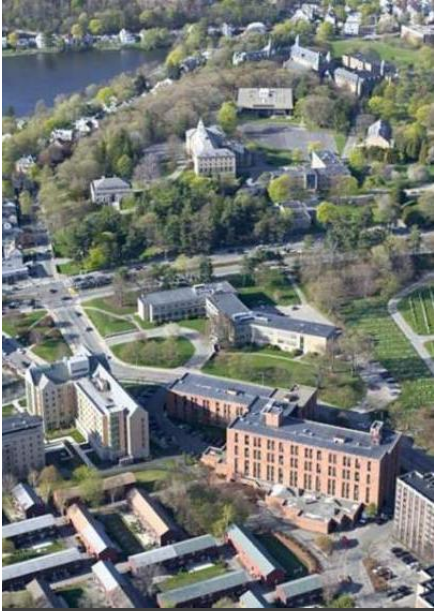




## Agenda

- Welcome and Introductions
- 2150 Commonwealth Avenue Residence Hall Planning
  - 11/26/12 Community Questions
  - Site Opportunities
  - Residential Life Program Opportunities
  - Building Configuration Opportunities
- Task Force Questions and Comments
- Public Questions and Comments

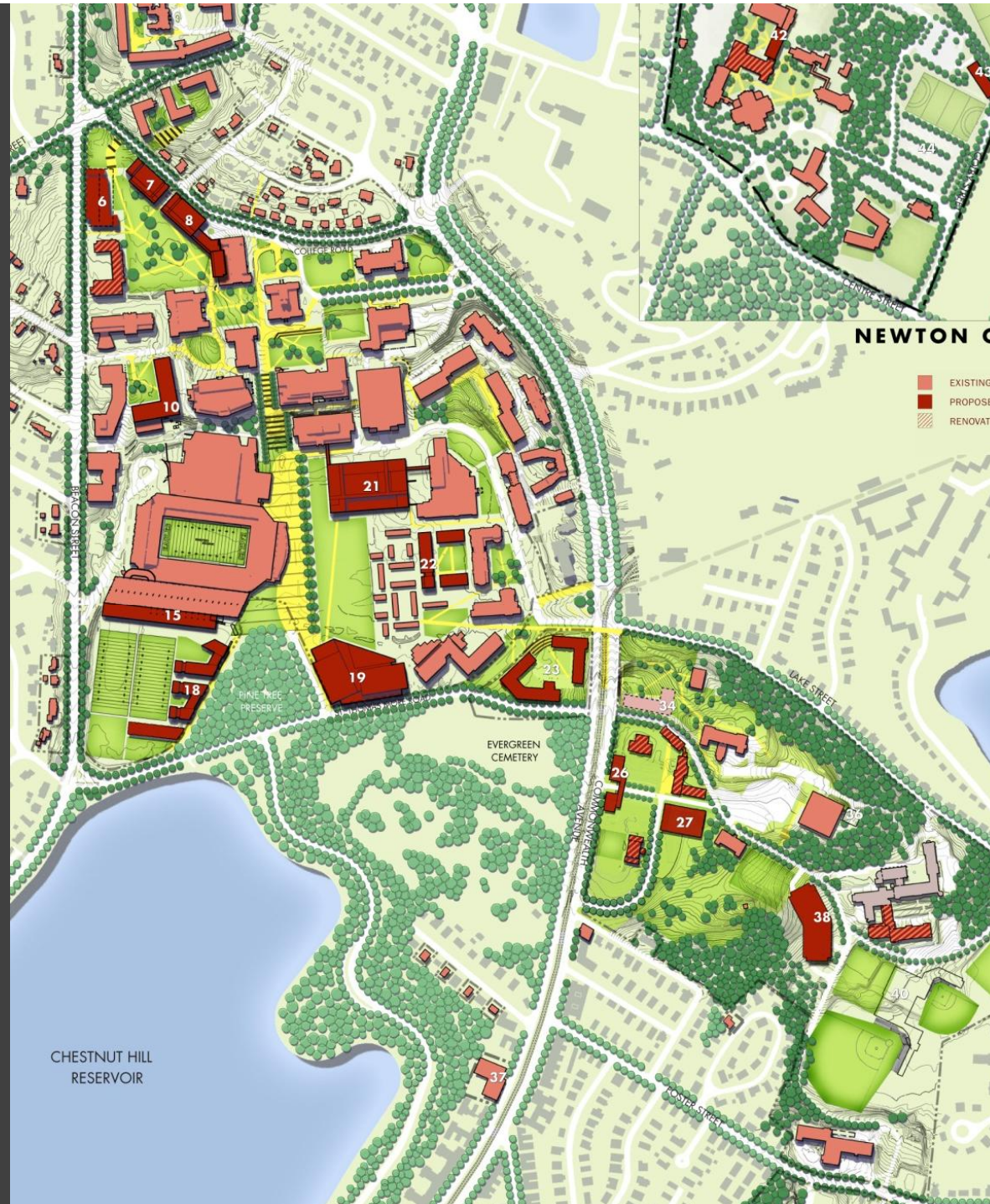






## IMP Goals

- Strong building composition
- Create memorable open spaces
- Express active uses





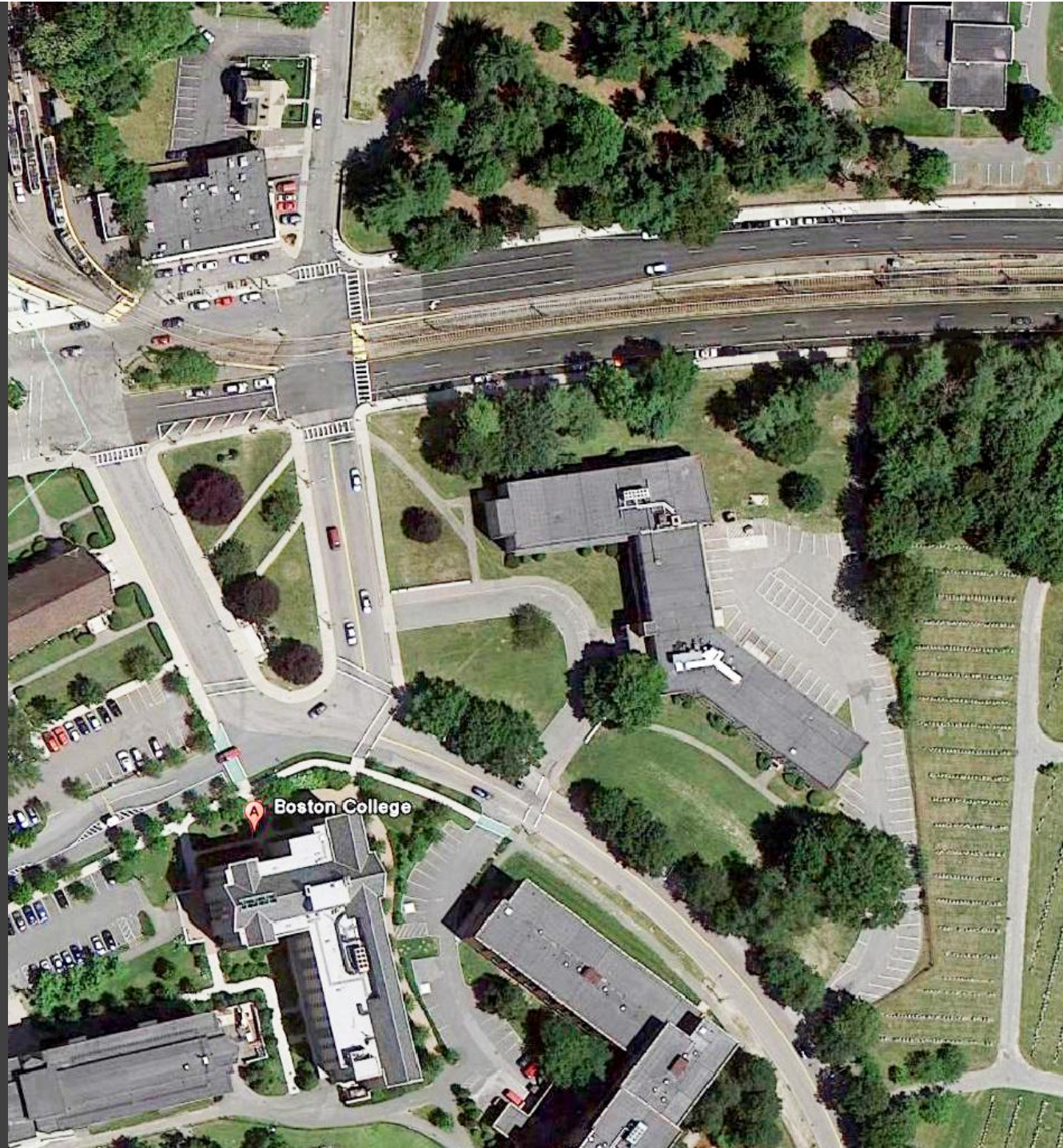
## 11/26/12 Community Questions

- How would a future MBTA relocation affect the site?
- What student life program elements are important to accommodate within the building?
- How might BC increase beds within project constraints?



## Project Constraints

- Mature landscape
- Height limitations
- Site topography
- Operations

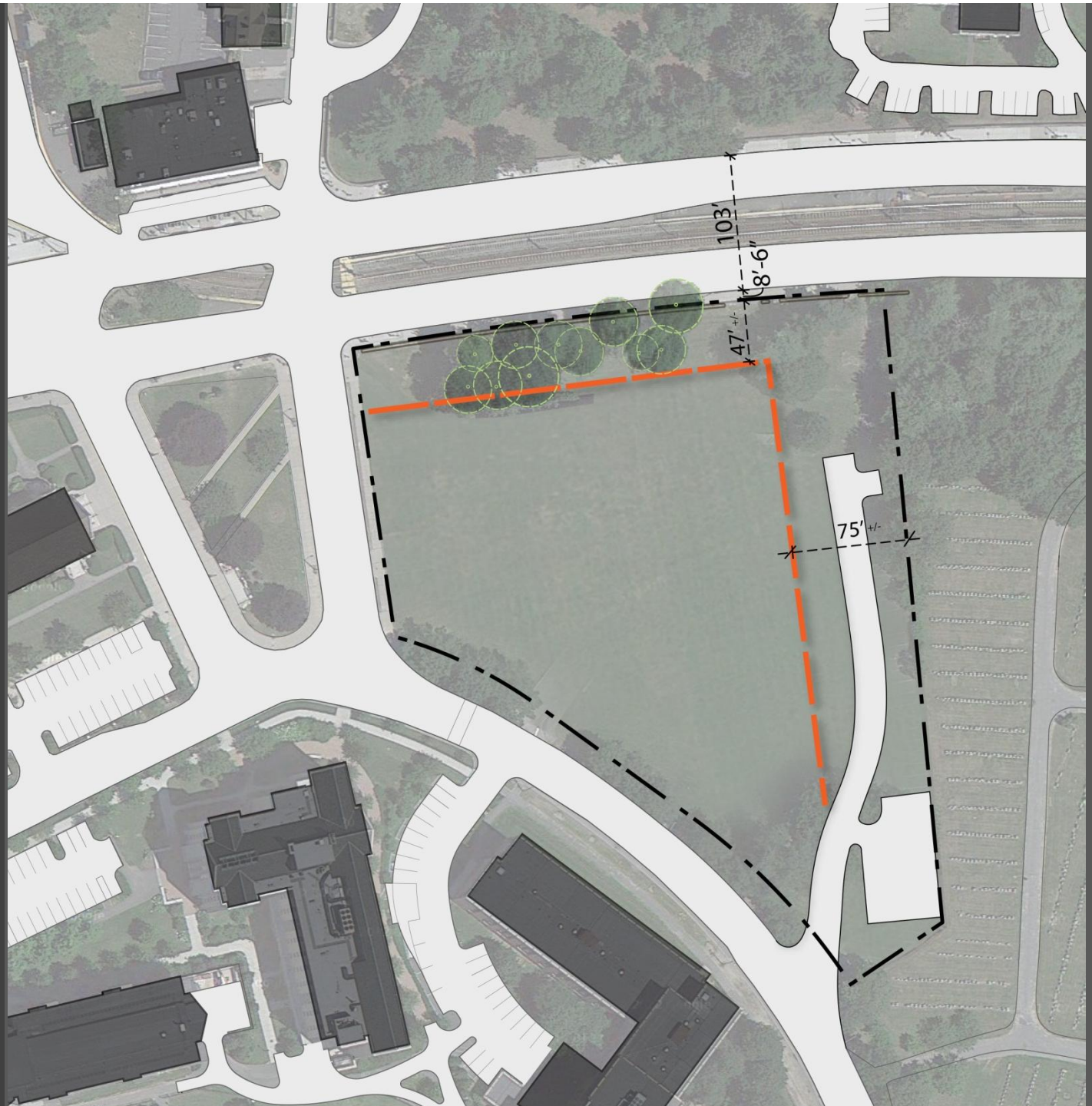




# Site Opportunities



# Site Opportunities

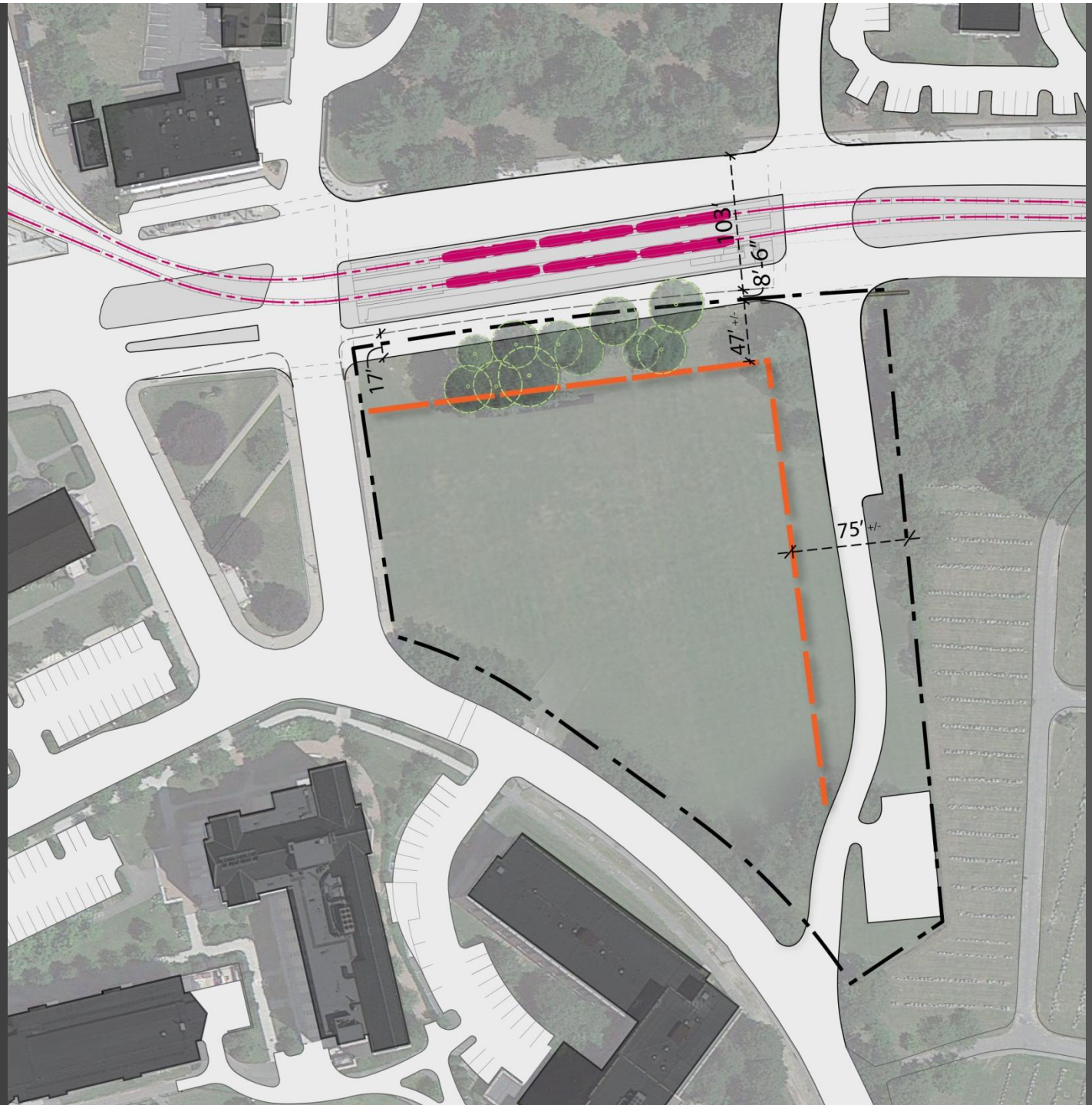




[illegible]

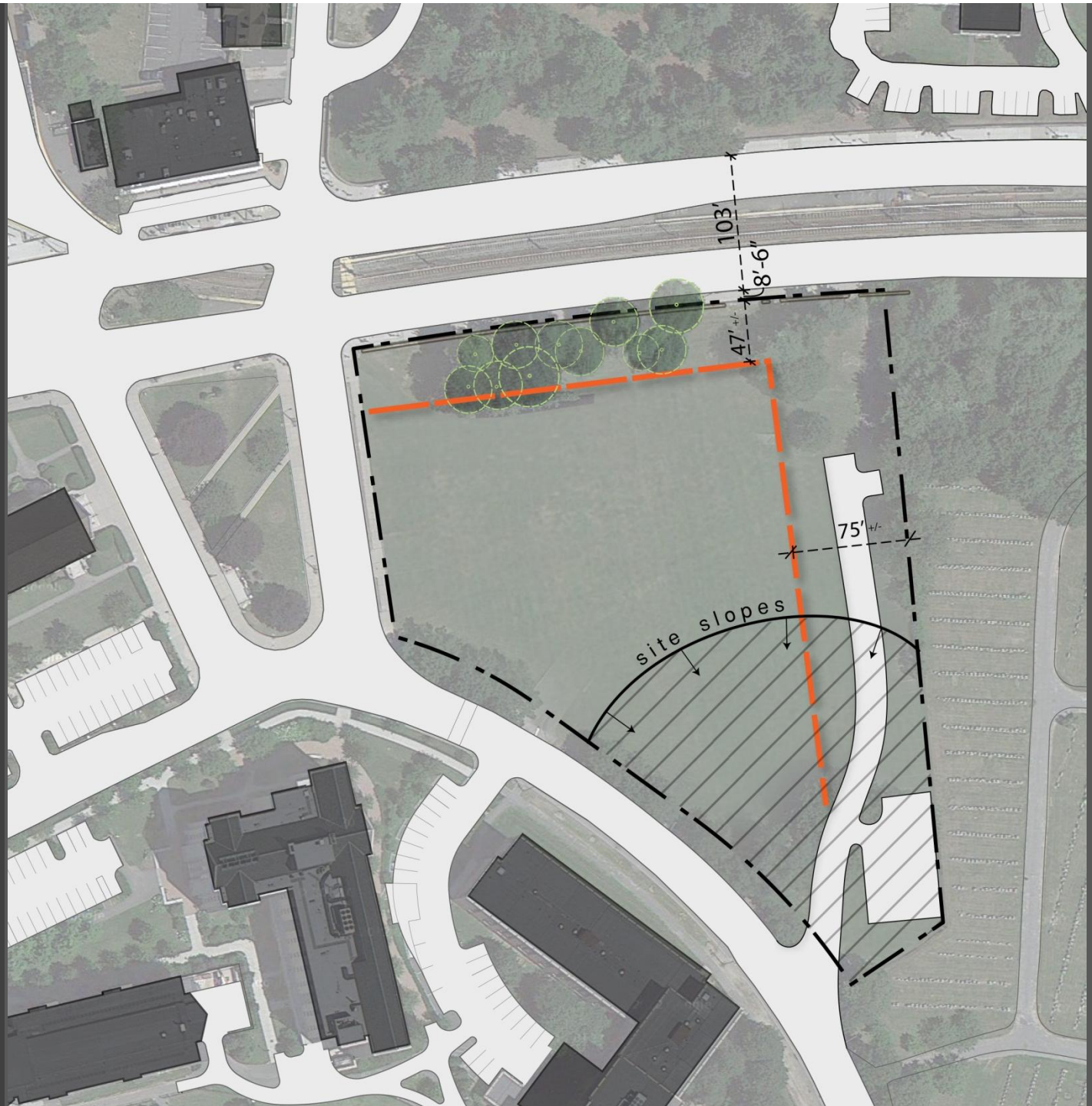


# Site Opportunities



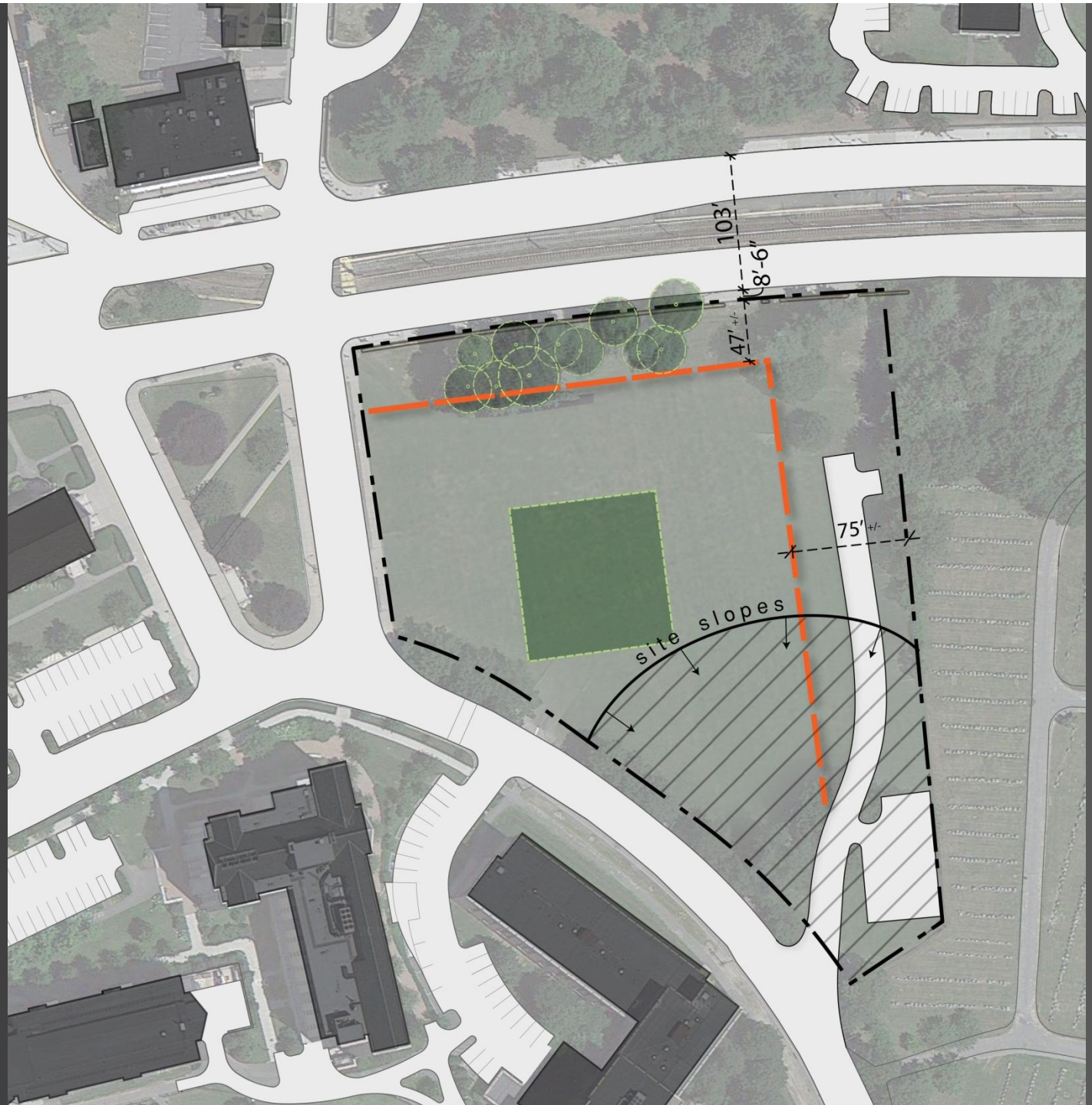


# Site Opportunities



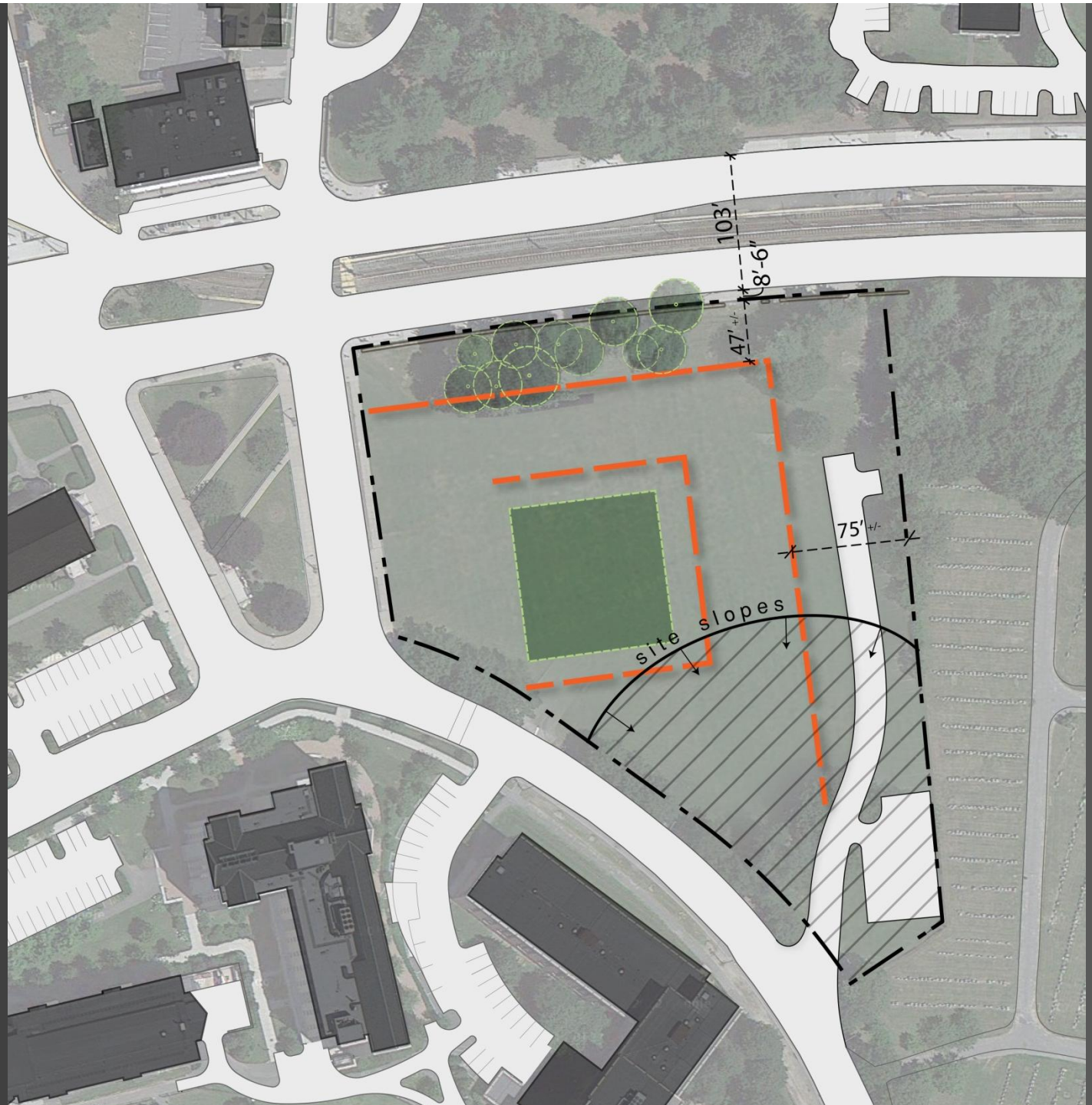


# Site Opportunities



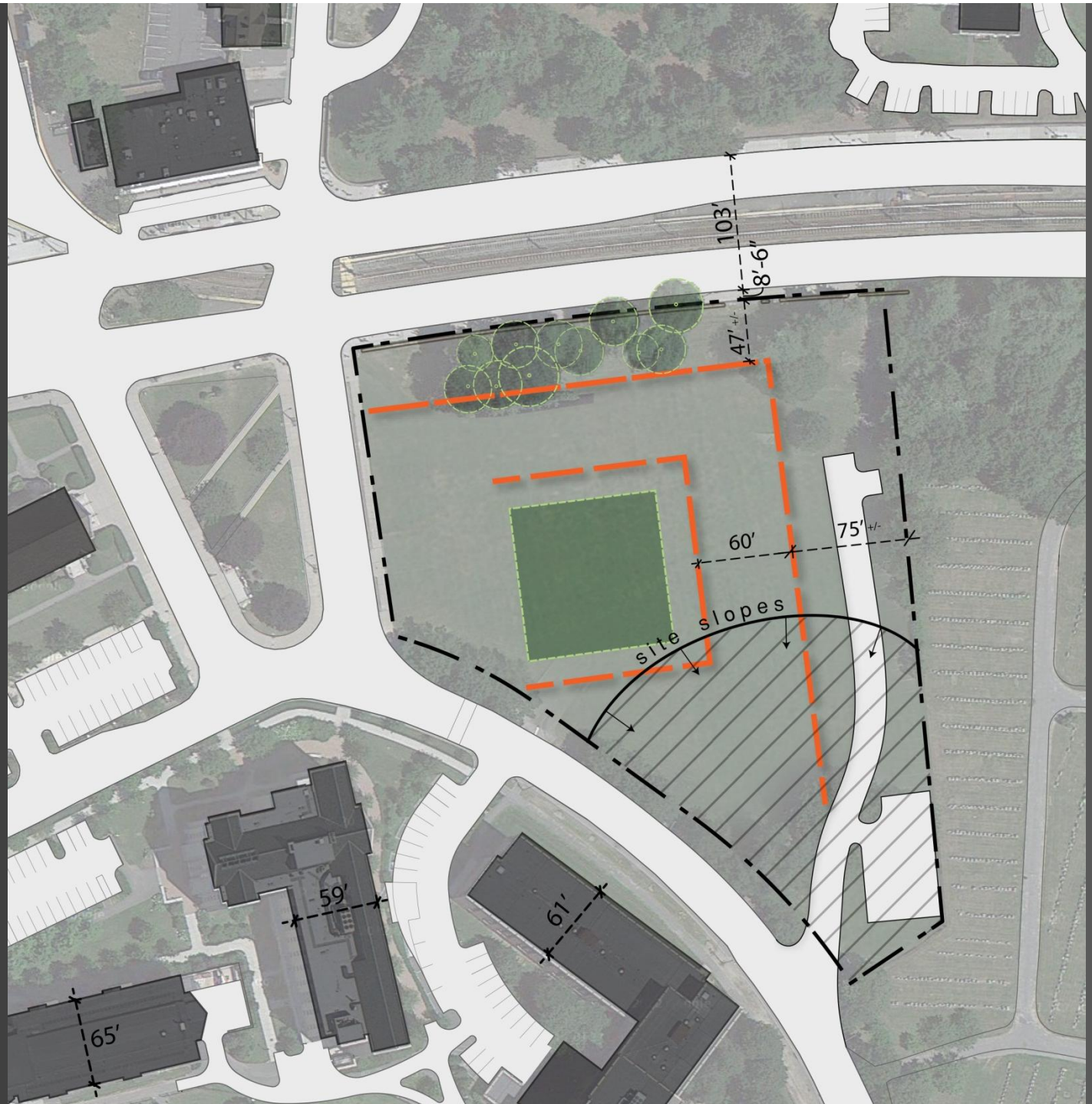


# Site Opportunities



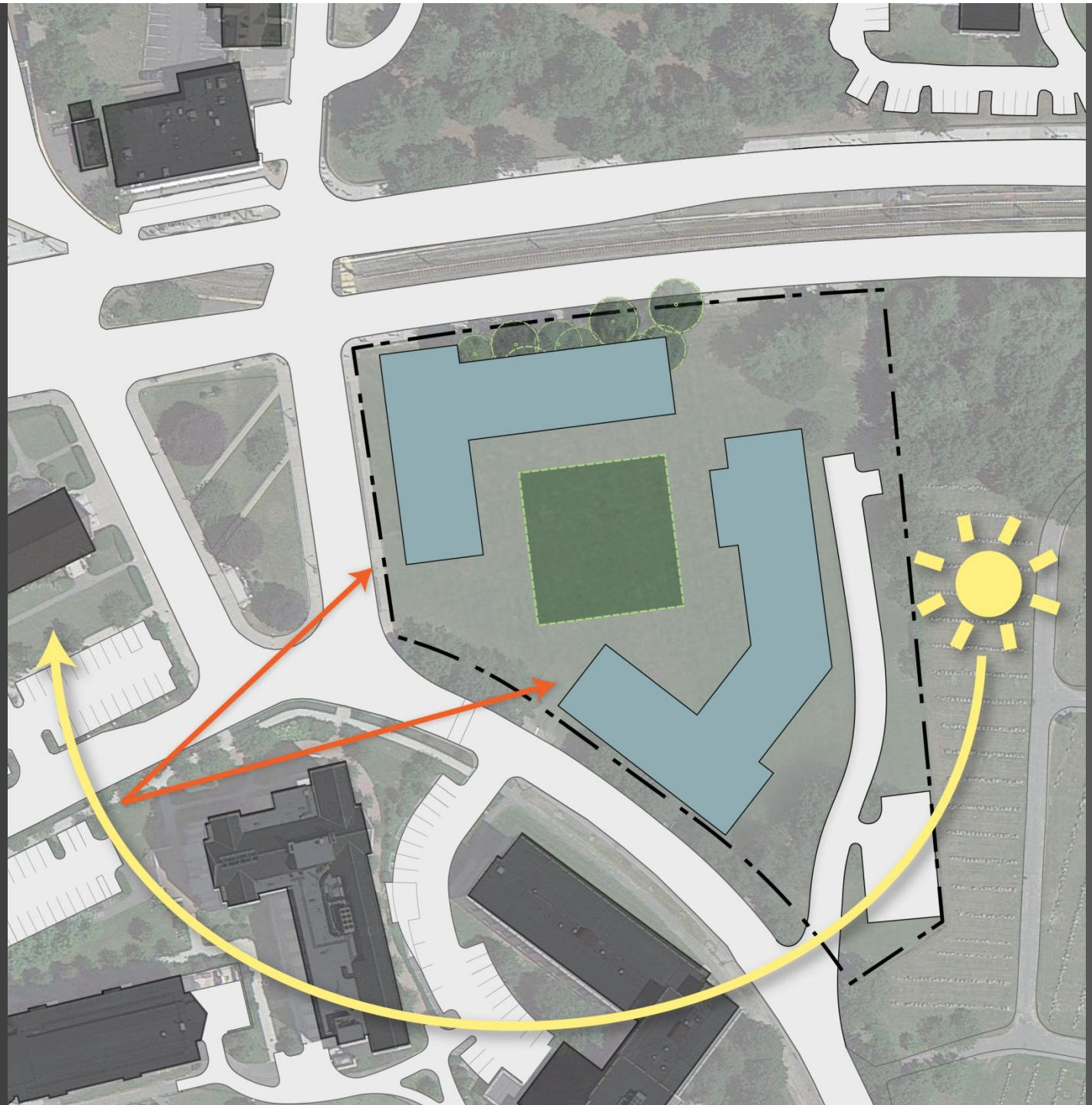


# Site Opportunities



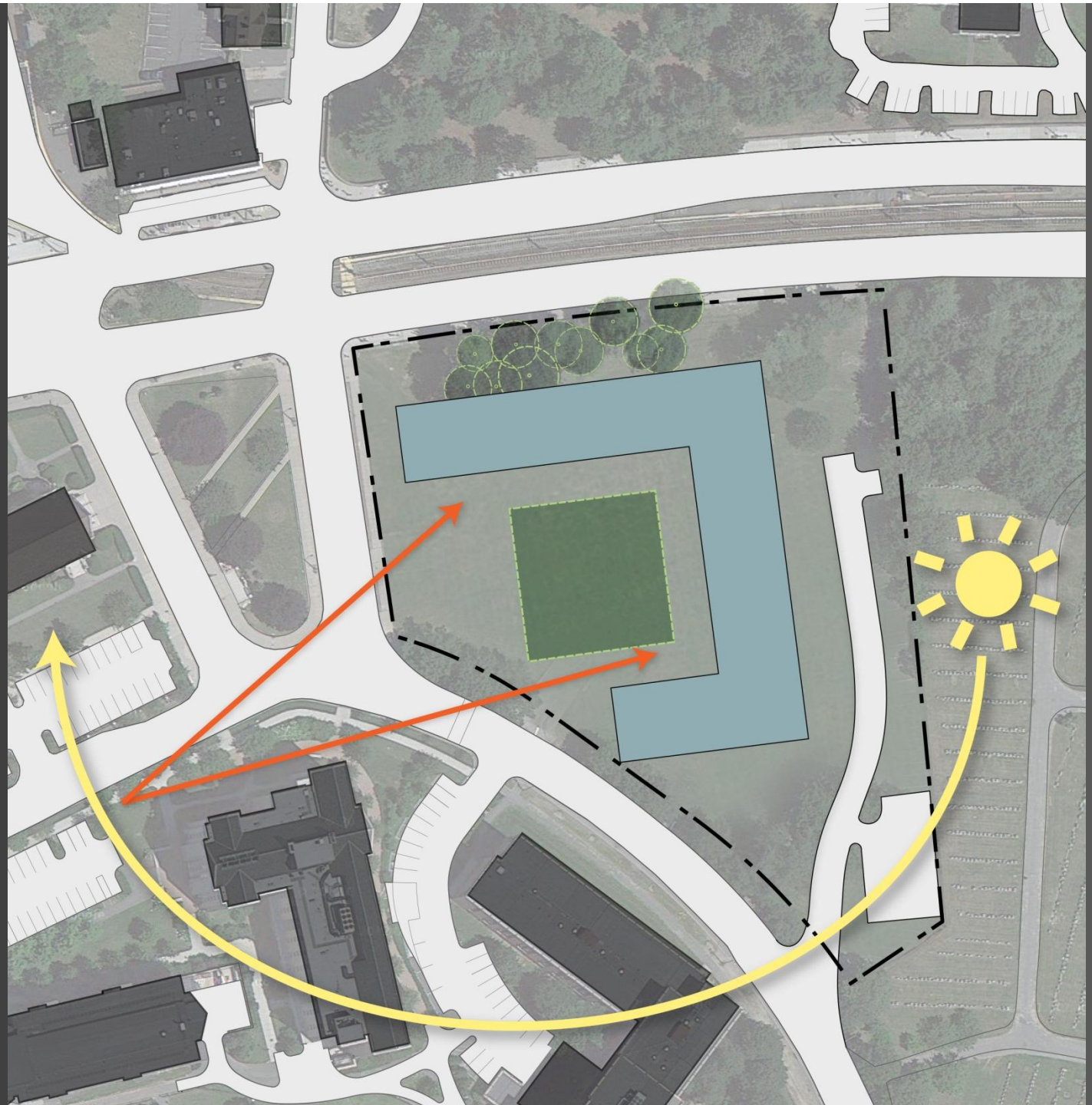


Site  
Opportunities



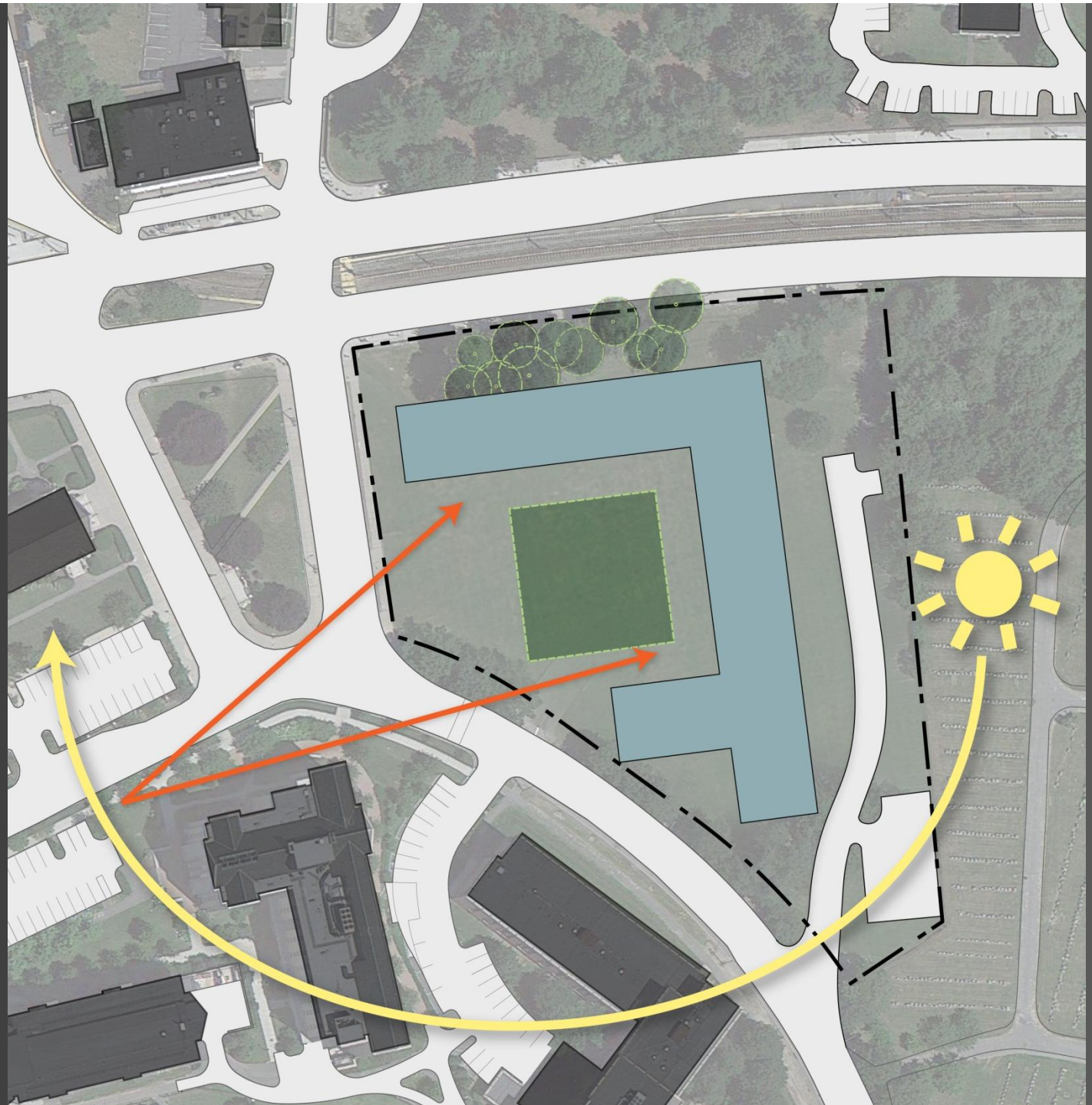


Site  
Opportunities





Site  
Opportunities







# IMP Housing Vision and Goals

## Vision

- Holistic learning, strong programming within building to foster community

## Goals

- Meet full undergraduate student demand in university-controlled housing
- Offer a range of housing from traditional dorm-style to apartments
- Housing and programs that form good student behavior habits





## Live / Learn Program

- Entry Lobby – 2 entries
- Lobby Lounge
- Common Room
- Seminar Room
- Quiet Room
- Music Practice Rooms
- 2 Adult Apartments
- 1 large Floor Lounge per floor
- 3 Study Lounges per floor





## Program Summary:

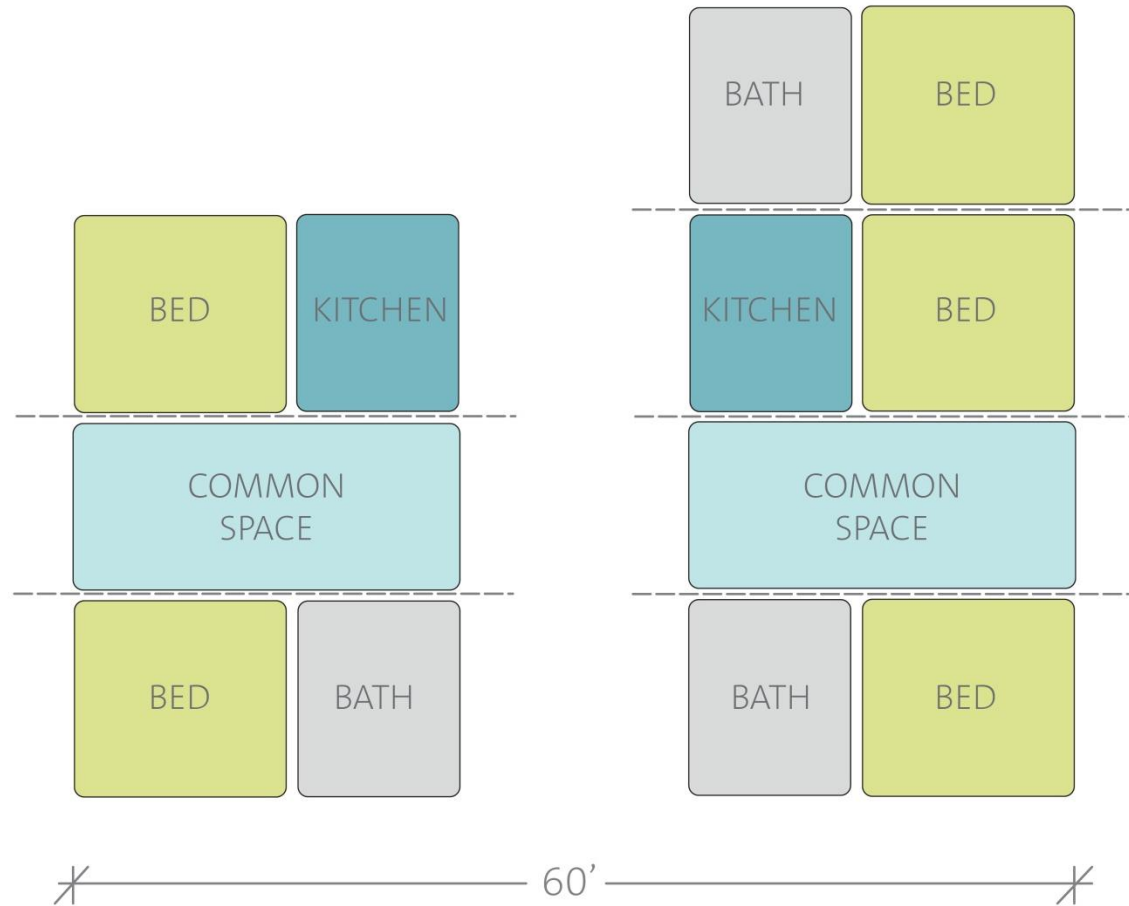
### Approved IMP Program Elements

- 470 Beds
- Common Spaces
- Resident Director Apartment
- Retail
- Underground Parking
- Open Space

### Alternate Program Elements Explored

- Campus Police
- Health Services

## Residential Unit Style & Arrangement



**4** BED APARTMENT

**6** BED APARTMENT



Live/Learn  
Community



4 BED

4 BED

6 BED

4 BED

6 BED

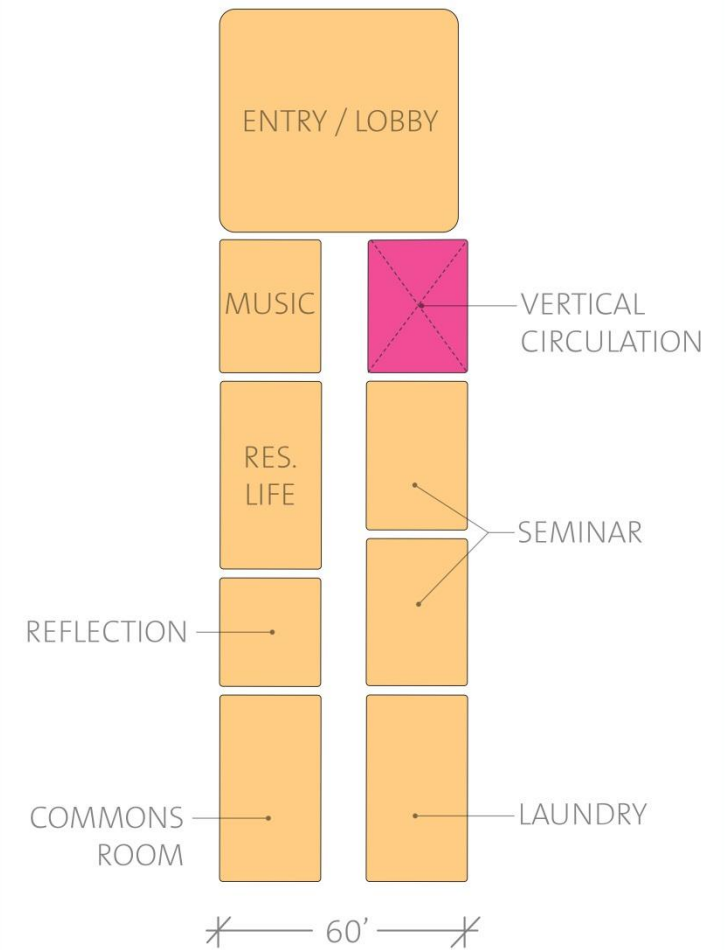
6 BED

6 BED RA

STUDY

60'

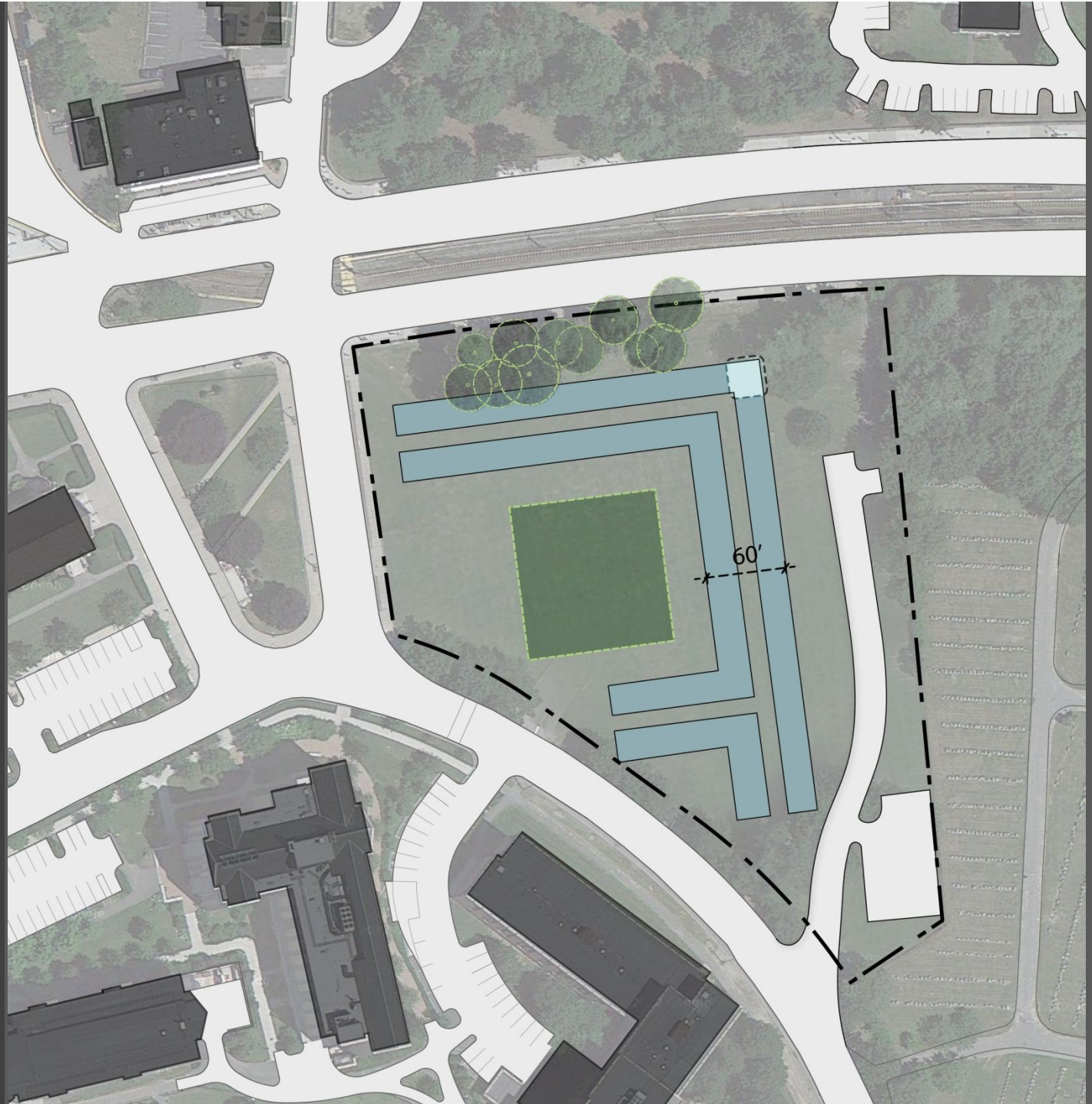
## Live/Learn Community



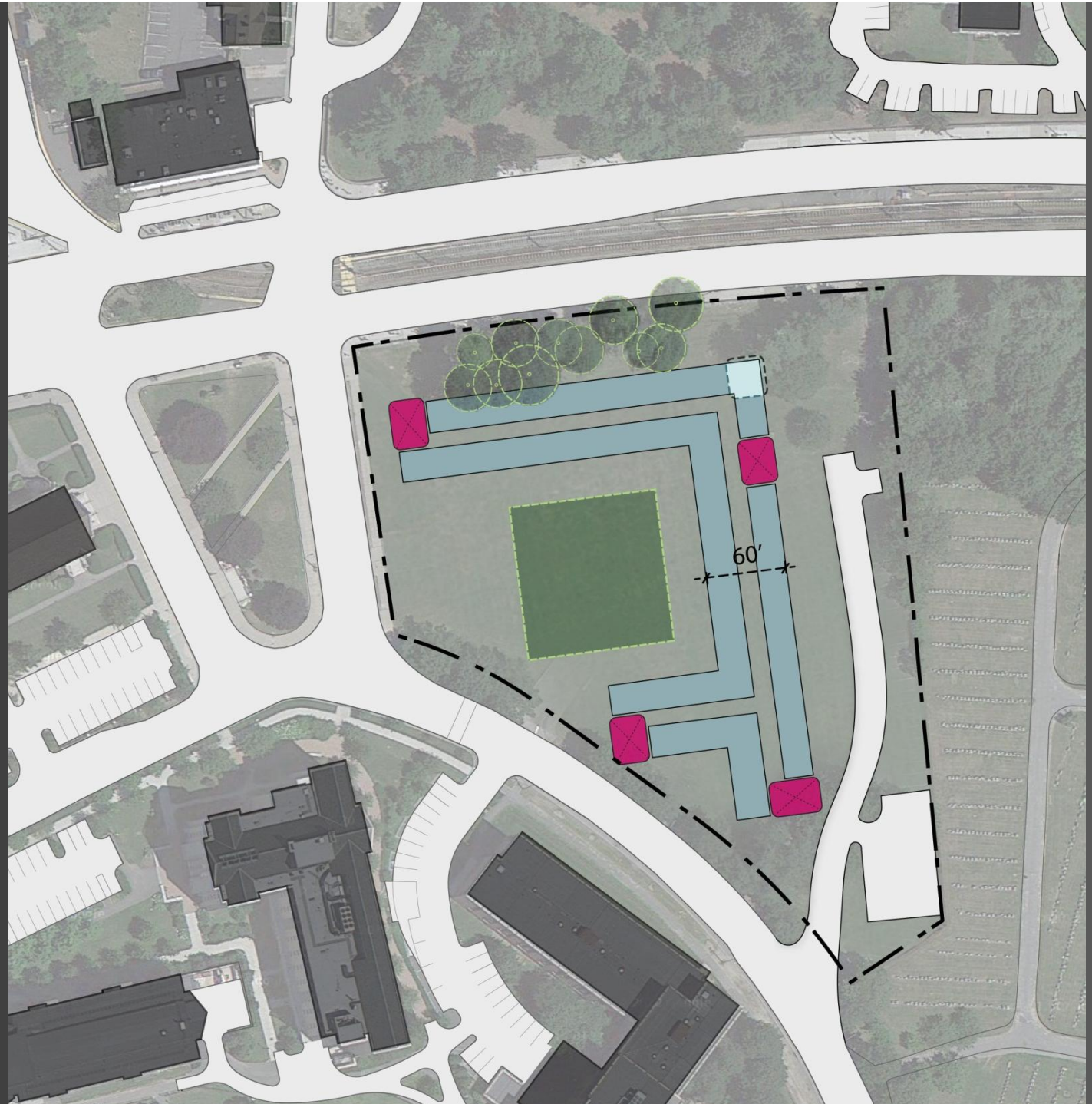
First Floor



Building  
Configuration  
Opportunities



Building  
Configuration  
Opportunities





Building  
Configuration  
Opportunities



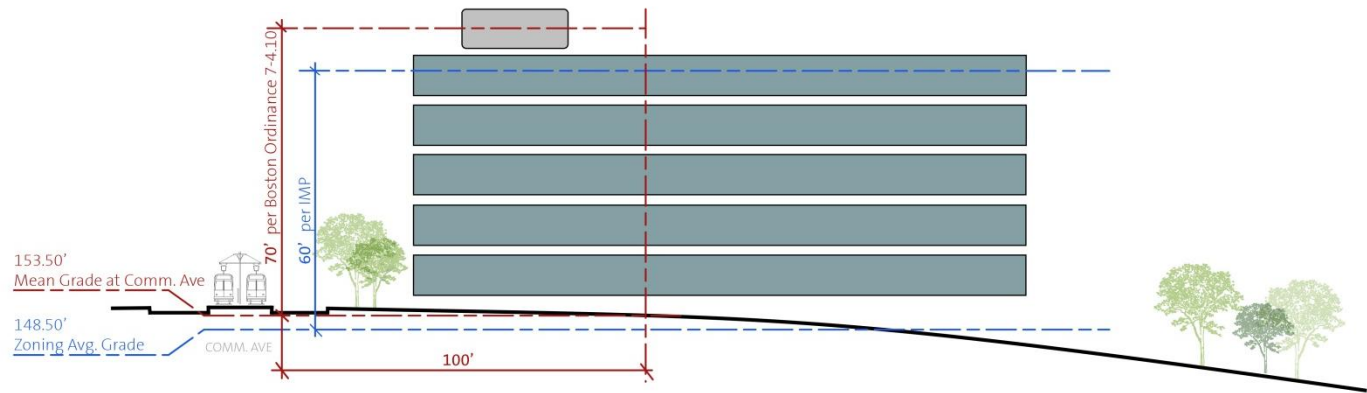


Building  
Configuration  
Opportunities

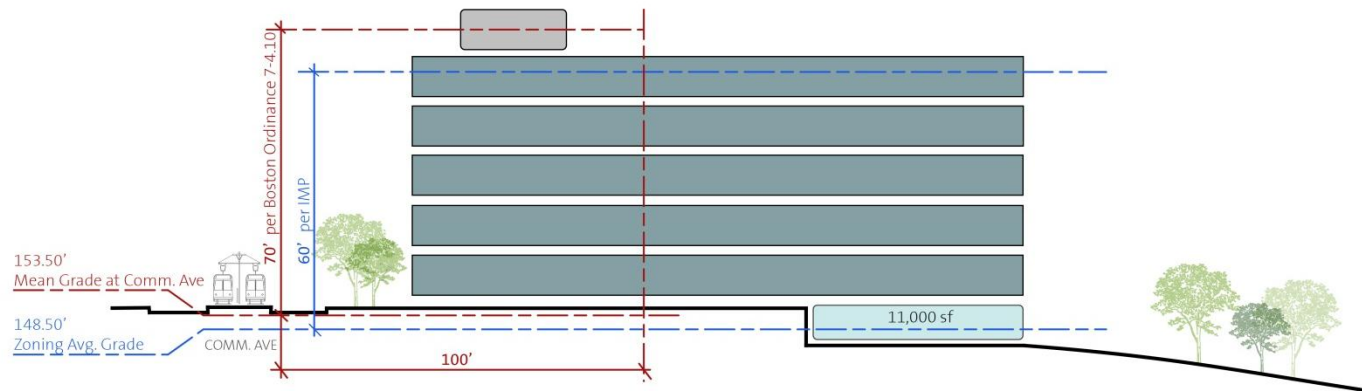




## Section

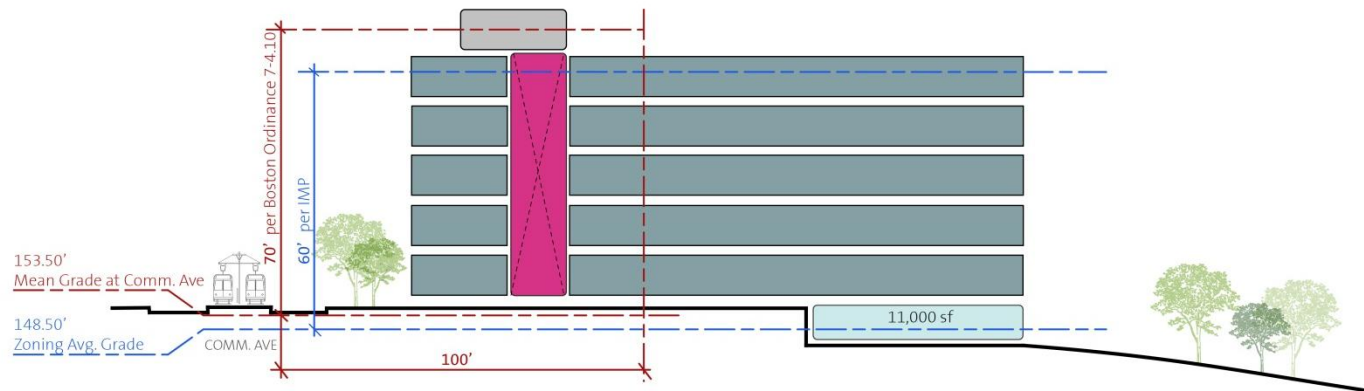


## Section

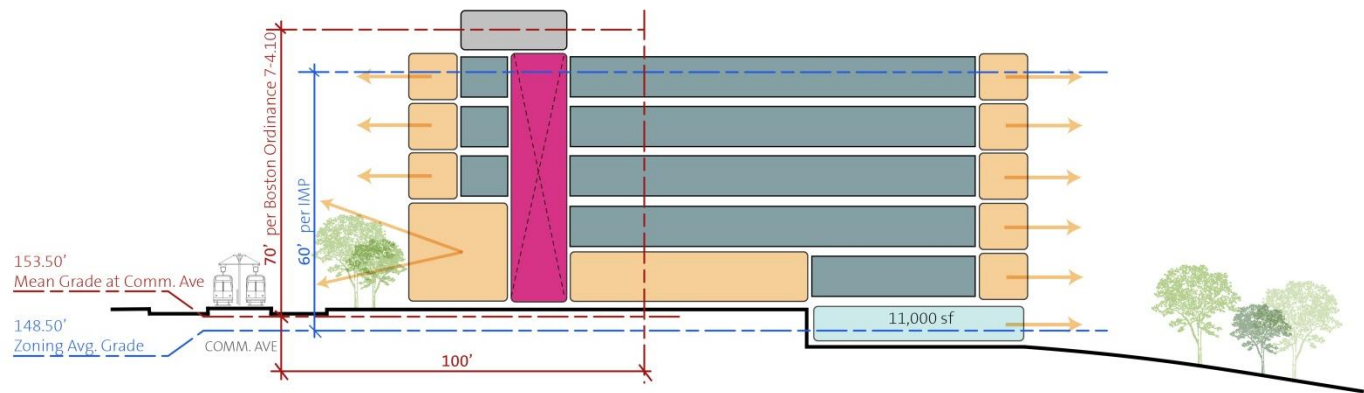




## Section

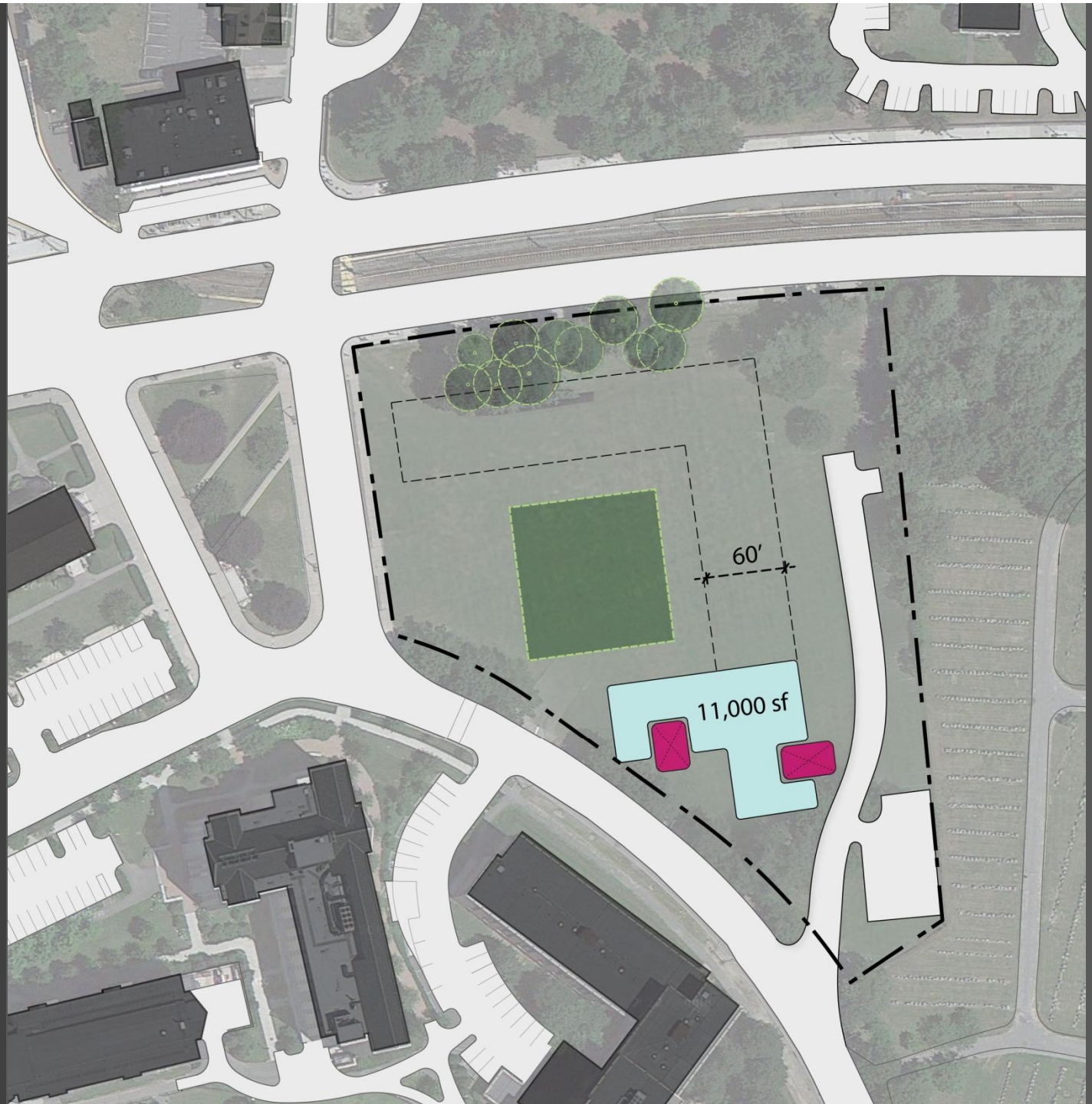


## Section





Ancillary  
Student Life  
Program





## Discussion

