

FULL-TIME FRESHMAN ENROLLMENT By Year and Gender

Fall	Men	Women	Total
1995	1,003	1,137	2,140
1996	1,145	1,329	2,474
1997	1,084	1,084	2,168
1998	1,063	1,184	2,247
1999	1,103	1,181	2,284
2000	1,114	1,132	2,246
2001	940	1,163	2,103
2002	1,150	1,165	2,315
2003	1,055	1,153	2,208
2004	1,090	1,219	2,309

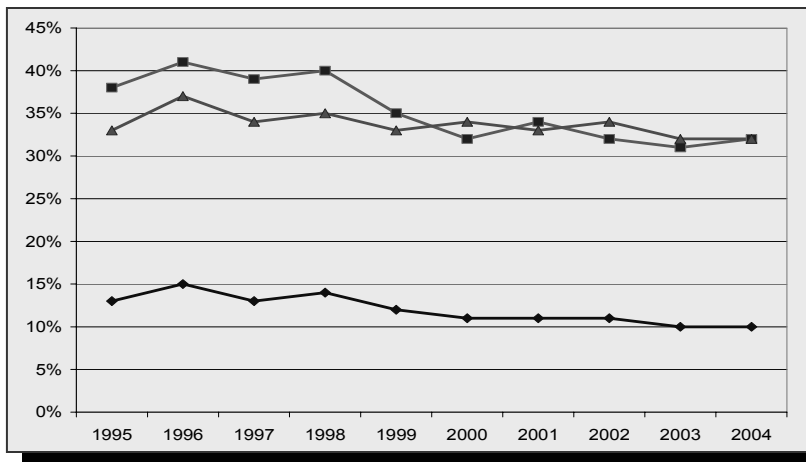
Source: Office of Undergraduate Admission

FRESHMAN ADMISSION PROFILE Middle 50% Range of SAT Scores

Class	Verbal	Math	Combined
1999	520 - 620	610 - 700	1140 - 1300
2000*	580 - 670	600 - 690	1200 - 1340
2001	580 - 680	610 - 690	1210 - 1340
2002	590 - 680	610 - 690	1210 - 1350
2003	590 - 680	610 - 690	1210 - 1360
2004	600 - 690	620 - 700	1230 - 1370
2005	600 - 690	620 - 700	1240 - 1380
2006	600 - 690	620 - 710	1250 - 1390
2007	600 - 690	630 - 710	1260 - 1390
2008	610 - 700	630 - 710	1250 - 1400

*Class of 2000 begins College Board recentered score series
Source: Office of Undergraduate Admission

FRESHMAN APPLICATION, ACCEPTANCES, AND ENROLLMENT By Year



■ Acceptances as a % of Applications
● Enrollment as a % of Acceptances
▲ Enrollment as a % of Applications

Fall	Applications	Acceptances	Acceptances as a % of Applications	Total Enrollment	Enrollment as a % of Acceptances	Enrollment as a % of Applications
1995	16,680	6,399	38	2,140	33	13
1996	16,501	6,750	41	2,474	37	15
1997	16,455	6,455	39	2,168	34	13
1998	16,373	6,484	40	2,247	35	14
1999	19,746	6,976	35	2,284	33	12
2000	20,743	6,587	32	2,246	34	11
2001	19,059	6,401	34	2,103	33	11
2002	21,133	6,850	32	2,315	34	11
2003	22,424	6,896	31	2,208	32	10
2004	22,451	7,178	32	2,309	32	10

Note: Freshman enrollment reported above is based on deposits received from students accepting the offer of admission on or before the deadline set by the Committee on Admission. Withdrawals may occur during the summer months and the first two weeks in September.
Source: Office of Undergraduate Admission

APPLICATIONS, ACCEPTANCES, AND ENROLLMENT – CLASS OF 2008

Geographic Distribution

State	Applications	Acceptances	Enrollment	State	Applications	Acceptances	Enrollment
Alabama	38	8	0	Nevada	37	12	4
Alaska	17	5	1	New Hampshire	373	91	42
Arizona	128	41	9	New Jersey	2,197	784	248
Arkansas	12	4	1	New Mexico	27	10	3
California	2,203	595	111	New York	3,323	1,125	356
Colorado	220	61	17	North Carolina	144	65	10
Connecticut	1,508	467	182	North Dakota	6	3	2
Delaware	42	18	5	Ohio	415	138	36
District of Columbia	97	39	10	Oklahoma	34	12	1
Florida	692	275	84	Oregon	102	30	9
Georgia	201	61	11	Pennsylvania	933	269	71
Hawaii	93	40	7	Rhode Island	306	94	44
Idaho	15	0	0	South Carolina	44	18	6
Illinois	688	198	53	South Dakota	5	2	0
Indiana	87	22	4	Tennessee	103	34	2
Iowa	39	19	1	Texas	497	162	41
Kansas	60	17	3	Utah	35	10	4
Kentucky	35	10	0	Vermont	130	25	11
Louisiana	65	26	1	Virginia	386	120	25
Maine	204	59	27	Washington	215	59	16
Maryland	574	248	78	West Virginia	20	2	0
Massachusetts	4,010	1,267	602	Wisconsin	190	69	16
Michigan	237	63	20	Wyoming	7	2	1
Minnesota	274	102	33	Puerto Rico	74	30	10
Mississippi	18	6	0	Virgin Islands, Guam, Canal Zone	35	18	2
Missouri	163	60	20	Other	1,036	264	66
Montana	16	5	0	Total	22,451	7,178	2,309
Nebraska	41	14	3				

Note: Application, Acceptance and Enrollment totals are as of May 28, 2004. Class of 2008 includes students from 43 states, the District of Columbia, Puerto Rico, the Virgin Islands, and 29 foreign countries.

Source: Office of Undergraduate Admission

TOP CROSS APPLICATION COMPETITOR SCHOOLS OF ENROLLING FRESHMEN CLASS OF 2008

Top 12 Colleges and Universities

Georgetown University	University of Pennsylvania	University of Notre Dame
Harvard College	Brown University	Duke University
Tufts University	Dartmouth College	New York University
Boston University	Cornell University	Yale University

Note: Competitor schools are determined by the number of admitted students applying to the listed colleges. They do not include students of competitor schools who were not admitted to Boston College.

Source: Office of Enrollment Management Research, 2004 Admitted Student Questionnaire Plus (2,368 student responses)

UNDERGRADUATE TRANSFER STUDENT APPLICATIONS, ACCEPTANCES, AND ENROLLMENT Full-Time

Fall*	Applications	Acceptances	Acceptances as a % of Applications	Total Enrollment	Enrollment as a % of Acceptances	Enrollment as a % of Applications
1995	1,740	422	24	216	51	12
1996	1,526	252	17	113	45	7
1997	1,338	495	37	247	50	19
1998	1,339	496	35	225	48	17
1999	1,525	447	29	248	55	16
2000	1,363	256	19	142	56	10
2001	1,015	258	25	132	51	13
2002	1,079	130	12	71	55	7
2003	1,123	260	23	124	48	11
2004	942	240	25	122	51	13

* Transfer enrollment typically increases 75-125 students second semester

Source: Office of Undergraduate Admission

UNDERGRADUATE TRANSFER STUDENT ENROLLMENT By Type of Previous Institution and Gender

Fall*	2-Year Public	2-year Private	4-Year Public	4-Year Private	Total	Men	Women	Total
1995	31	6	58	121	216	91	125	216
1996	11	1	43	58	113	42	71	113
1997	22	5	66	154	247	112	135	247
1998	17	8	62	138	225	100	125	225
1999	24	4	59	161	248	95	153	248
2000	10	-	61	71	142	63	79	142
2001	9	2	45	76	132	59	73	132
2002	3	1	24	43	71	32	39	71
2003	13	0	34	77	124	55	69	124
2004	5	0	29	88	122	41	81	122

* Transfer enrollment typically increases 75-125 students second semester

Source: Office of Undergraduate Admission

ENROLLMENT, FALL 2004

By School, Gender, and Full- and Part-Time

School	Full-Time			Part-Time			Total		
	Men	Women	Total	Men	Women	Total	Men	Women	Total
Undergraduate Enrollment									
School of Arts & Sciences	2,865	3,102	5,967	0	0	0	2,865	3,102	5,967
Carroll School of Management	1,242	735	1,977	0	0	0	1,242	735	1,977
Lynch School of Education	137	649	786	0	0	0	137	649	786
Connell School of Nursing	16	313	329	0	0	0	16	313	329
Total Undergraduate Day Students	4,260	4,799	9,059	0	0	0	4,260	4,799	9,059
College of Advancing Studies	163	122	285	208	221	429	371	343	714
Graduate & Professional Enrollment									
Graduate Arts & Sciences	182	169	351	357	338	695	539	507	1,046
Graduate Education	82	333	415	190	450	640	272	783	1,055
Law School	391	405	796	0	0	0	391	405	796
Graduate Management	211	145	356	426	186	612	637	331	968
Graduate Nursing	6	107	113	8	112	120	14	219	233
Graduate Social Work	44	325	369	25	97	122	69	422	491
Graduate Advancing Studies	12	2	14	73	79	152	85	81	166
Total Graduate & Professional	928	1,486	2,414	1,079	1,262	2,341	2,007	2,748	4,755
Total University Enrollment	5,351	6,407	11,758	1,287	1,483	2,770	6,638	7,890	14,528

Note: Undergraduate enrollment includes 254 students on Boston College International Exchange programs who are not on the Boston College campus. Excluding those studying abroad, the total number of undergraduates attending Boston College in the Fall 2004 semester is 8,805.
Source: Office of Student Services

STUDENT CREDIT HOURS

By School

	1999-00	2000-01	2001-02	2002-03	2003-04
Undergraduate					
Arts & Sciences	173,869	171,305	173,114	175,346	173,624
Management	66,569	64,572	63,241	61,099	61,038
Education	24,982	23,885	23,654	23,466	23,719
Nursing	6,928	6,316	6,751	6,454	8,188
College of Advancing Studies	13,970	13,725	13,543	13,347	12,899
Total Undergraduate	286,318	279,803	280,303	279,712	279,468
Graduate & Professional					
Graduate Arts and Sciences	9,072	8,913	9,118	9,202	8,988
Graduate Education	14,360	12,957	11,630	13,154	13,919
Graduate Management	13,311	14,334	14,405	14,730	14,629
Graduate Nursing	2,828	2,787	2,674	3,023	3,958
Graduate Social Work	14,409	13,178	12,590	12,598	11,007
Law School	23,609	23,016	23,489	23,416	23,578
Graduate Advancing Studies	2,071	1,707	1,582	1,766	1,659
Total Graduate & Professional	79,660	76,892	75,488	77,889	77,738
Total	365,978	356,695	355,791	357,601	357,206

Source: Office of Student Services

UNDERGRADUATE, GRADUATE & PROFESSIONAL ENROLLMENT, FALL 2000 TO FALL 2004 By School, Gender, and Full- and Part-Time

	Undergraduate Day Schools					Adv.St.	Graduate & Professional							Univ. Total	
	A&S	Mgt.	Ed.	Nurs.	Total		GA&S	GEd.	GNurs.	GMgt.	GSSW	Law	Adv.St.		Total
Fall 2000															
Full-Time	5,741	2,187	785	216	8,929	262	295	417	86	244	307	805	9	2,163	11,354
Part-Time	-	-	-	1	1	606	732	611	79	712	160	-	164	2,458	3,065
Men	2,766	1,394	107	5	4,272	461	526	244	7	635	66	392	76	1,946	6,679
Women	2,975	793	678	212	4,658	407	501	784	158	321	401	413	97	2,675	7,740
Total	5,741	2,187	785	217	8,930	868	1,027	1,028	165	956	467	805	173	4,621	14,419
Fall 2001															
Full-Time	5,850	2,148	772	230	9,000	260	326	325	83	281	300	813	4	2,132	11,392
Part-Time	-	-	-	-	-	537	689	618	68	692	143	1	167	2,378	2,915
Men	2,783	1,343	129	5	4,260	406	518	220	6	653	67	382	78	1,924	6,590
Women	3,067	805	643	225	4,740	391	497	723	145	320	376	432	93	2,586	7,717
Total	5,850	2,148	772	230	9,000	797	1,015	943	151	973	443	814	171	4,510	14,307
Fall 2002															
Full-Time	5,895	2,045	756	220	8,916	248	324	372	98	273	297	806	10	2,180	11,344
Part-Time	-	-	-	-	-	526	712	634	72	700	148	-	161	2,427	2,953
Men	2,889	1,264	126	6	4,285	401	519	235	5	643	64	367	72	1,905	6,591
Women	3,006	781	630	214	4,631	373	517	771	465	330	381	439	99	2,702	7,706
Total	5,895	2,045	756	220	8,916	774	1,036	1,006	170	973	445	806	171	4,607	14,297
Fall 2003															
Full-Time	5,767	2,048	767	269	8,851	282	318	419	125	349	363	811	12	2,397	11,530
Part-Time	-	-	-	-	-	486	719	642	69	629	156	1	147	2,363	2,849
Men	2,805	1,270	137	9	4,221	393	526	279	11	637	85	380	72	1,990	6,604
Women	2,962	778	630	260	4,630	375	511	782	183	341	434	432	87	2,770	7,775
Total	5,767	2,048	767	269	8,851	768	1,037	1,061	194	978	519	812	159	4,760	14,379
Fall 2004															
Full-Time	5,967	1,977	786	329	9,059	285	351	415	113	356	369	796	14	2,414	11,758
Part-Time	-	-	-	-	-	429	695	640	120	612	122	-	152	2,341	2,770
Men	2,865	1,242	137	16	4,260	371	539	272	14	637	69	391	85	2,007	6,638
Women	3,102	735	649	313	4,799	343	507	783	219	331	422	405	81	2,748	7,890
Total	5,967	1,977	786	329	9,059	1,143	1,046	1,055	233	968	491	796	166	4,755	14,528

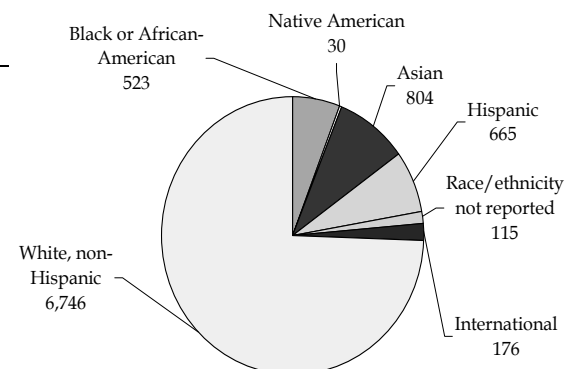
Source: Office of Student Services

AHANA & INTERNATIONAL ENROLLMENT, FALL 2004 Undergraduate Day Schools

	Men	Women	Total	*Percent
Black or African-American	243	280	523	5.85%
Native American	8	22	30	0.34%
Asian	373	431	804	8.99%
Hispanic	276	389	665	7.44%
AHANA Undergraduate	900	1,122	2,022	22.61%
International Students**	85	91	176	1.94%
AHANA & International Students	985	1,213	2,198	24.55%

*Note that AHANA percentages are of students who report their race/ethnicity identification. In fall of 2004, 115 students (69 men, 46 women) did not report race or ethnicity. **International students include nonresident aliens of all racial and ethnic groups including Caucasian.

Source: Office of Student Services



FULL-TIME EQUIVALENT ENROLLMENT*

By School, Fall 1995 through Fall 2004

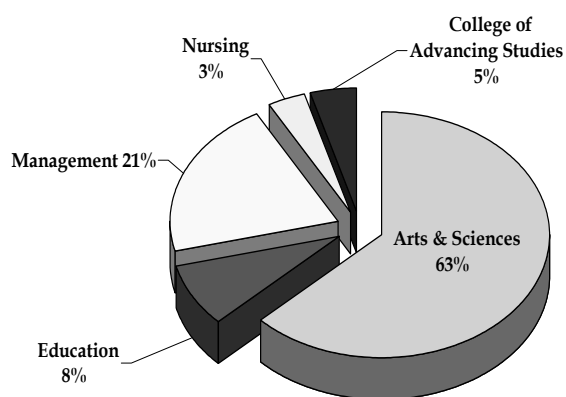
	1995	1996	1997	1998	1999	2000	2001	2002	2003	2004
Undergraduate Students										
Arts & Sciences	5,561	5,541	5,589	5,577	5,853	5,741		5,895	5,767	5,967
Education	698	772	806	810	828	785	772	756	767	786
Management	2,269	2,339	2,276	2,288	2,271	2,187	2,148	2,045	2,048	1,977
Nursing	367	305	250	247	237	216	230	220	269	329
Total Day Students	8,895	8,957	8,921	8,922	9,189	8,929	9,000	8,916	8,851	9,059
College of Advancing Studies**	633	624	531	485	439	464	440	423	444	428
Total Undergraduate	9,528	9,581	9,452	9,407	9,628	9,393	9,440	9,339	9,295	9,487
Graduate & Professional										
Graduate Arts & Sciences	609	605	592	601	548	539	553	561	558	583
Graduate Education	600	601	600	655	665	621	532	583	633	628
Graduate Management	459	455	464	486	455	481	511	506	559	560
Graduate Nursing	90	68	87	99	117	112	106	122	148	153
Graduate Social Work	456	478	463	412	392	360	348	346	415	410
Law	819	803	826	825	829	805	813	806	811	796
Graduate Advancing Studies	-	49	68	81	77	64	60	64	61	65
Total Graduate & Professional	3,033	3,059	3,100	3,159	3,083	2,982	2,923	2,988	3,185	3,195
Total University	12,561	12,640	12,552	12,566	12,711	12,375	12,363	12,327	12,480	12,682

* Method of computation: three part-time students equal one full-time equivalent student

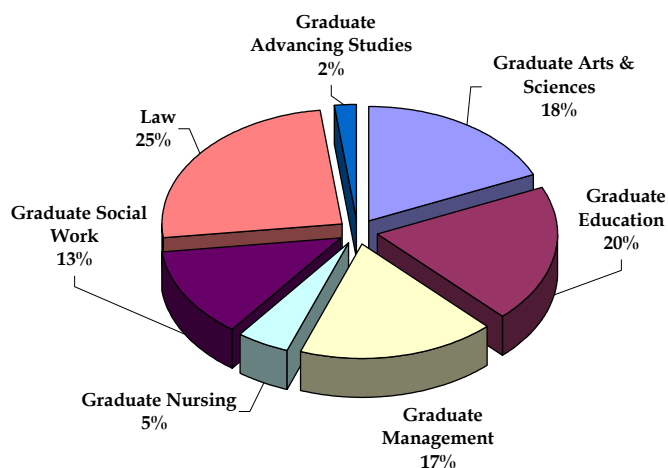
** In 1996, the Evening College became the College of Advancing Studies and began to offer graduate programs

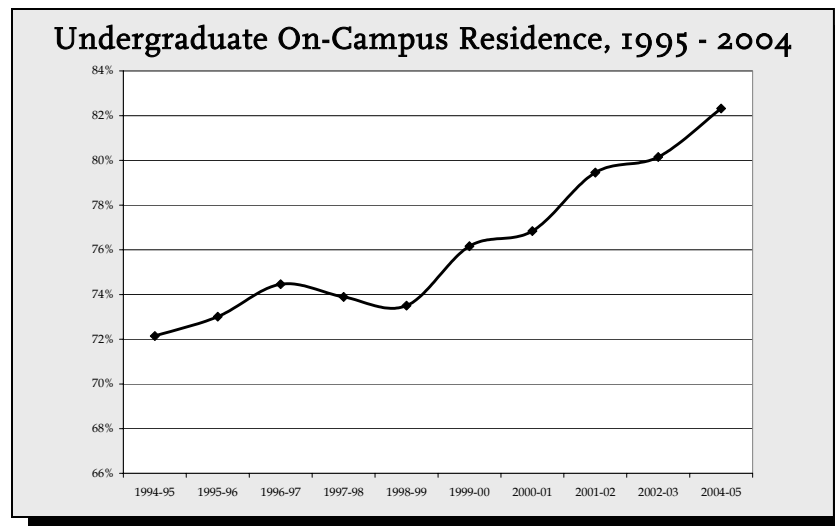
Source: Office of Student Services

Full-Time Equivalent Undergraduate Students by School



Full-Time Equivalent Graduate Students by School





UNDERGRADUATES STUDYING ABROAD

	Fall Semester			Spring Semester			Annual Average		
	University Programs	External Programs	Total All Programs	University Programs	External Programs	Total All Programs	University Programs	External Programs	Total All Programs
1999-2000	196	35	231	348	127	475	272	81	353
2000-2001	230	50	280	347	144	491	289	97	386
2001-2002	239	50	289	224	125	349	277	96	372
2002-2003	255	43	298	303	103	406	279	73	352
2003-2004	269	64	333	328	148	476	299	106	405

Source: Office of Student Services

SUMMER SESSION ENROLLMENT

Summer	1995	1996	1997	1998	1999	2000	2001	2002	2003	2004
Undergraduate	2,265	2,007	1,879	1,960	1,969	1,929	1,878	1,881	1,706	1,727
Graduate/Professional*	1,694	1,702	1,886	1,843	1,855	2,031	1,751	1,725	2,037	2,060
Total	3,959	3,709	3,765	3,803	3,824	3,960	3,629	3,606	3,743	3,787

*Includes students registered through the Institute of Religious Education and the Carroll Graduate School of Management

Source: Office of Student Services

GEOGRAPHIC DISTRIBUTION OF UNDERGRADUATE STUDENTS By State

State	1980	1990	2000	2003	2004	State	1980	1990	2000	2003	2004
Alabama	1	11	10	12	12	Nevada	0	7	3	4	9
Alaska	0	0	4	3	4	New Hampshire	130	172	184	166	176
Arizona	2	18	29	39	41	New Jersey	734	672	941	955	1,004
Arkansas	2	7	4	3	3	New Mexico	4	2	12	7	7
California	49	184	380	419	435	New York	1,118	1,039	1,372	1,432	1,449
Colorado	6	45	57	69	65	North Carolina	1	22	26	36	42
Connecticut	952	728	765	699	697	North Dakota	0	2	1	2	4
Delaware	20	23	22	18	16	Ohio	74	132	125	145	134
Washington, D.C.	20	28	29	24	26	Oklahoma	1	15	13	12	10
Florida	65	232	303	234	251	Oregon	3	8	20	18	23
Georgia	5	35	53	53	49	Pennsylvania	219	308	309	291	307
Hawaii	3	36	34	21	19	Rhode Island	282	260	184	191	188
Idaho	1	3	4	6	4	South Carolina	3	11	5	8	13
Illinois	133	150	248	228	214	South Dakota	0	1	1	1	0
Indiana	9	25	29	28	25	Tennessee	1	16	15	15	15
Iowa	1	8	17	14	9	Texas	11	122	131	146	131
Kansas	4	14	28	25	18	Utah	1	4	4	13	13
Kentucky	6	11	15	16	7	Vermont	27	47	52	50	42
Louisiana	4	38	22	25	21	Virginia	41	68	76	88	90
Maine	104	128	108	102	93	Washington	8	20	63	49	58
Maryland	109	184	255	231	241	West Virginia	3	9	2	5	3
Massachusetts	4,269	3,135	2,401	2,435	2,516	Wisconsin	25	53	50	54	62
Michigan	55	82	71	72	69	Wyoming	1	2	1	2	3
Minnesota	27	77	110	117	129	Guam	0	0	4	0	1
Mississippi	0	4	2	3	3	Puerto Rico	n/a	70	47	41	41
Missouri	17	49	54	53	61	Virgin Islands	n/a	6	1	4	5
Montana	1	6	4	11	10	International	172	227	208	142	176
Nebraska	5	30	22	14	15	Total	8,729	8,586	8,930	8,851	9,059

Source: Office of Student Services

UNDERGRADUATE MAJORS by School, 1995-2004

	1995	1996	1997	1998	1999	2000	2001	2002	2003	2004
Arts & Sciences										
Art History	38	37	38	36	34	32	45	42	41	60
Biochemistry	111	115	117	97	84	83	82	95	118	125
Biology	752	734	665	543	539	481	443	465	494	581
Chemistry	100	89	84	90	94	84	89	102	98	86
Classics	20	20	24	19	15	11	21	17	26	33
Communication	522	499	542	624	734	865	945	963	925	943
Computer Science	97	118	133	181	202	200	189	139	108	93
Economics	356	364	404	430	402	382	374	398	417	411
English	927	935	931	868	906	863	845	770	758	814
Film Studies	-	-	-	-	-	10	32	46	45	50
French	50	43	39	45	50	56	47	49	46	34
Geology/Geophysics	82	80	73	66	58	52	42	30	29	31
German	9	6	148	8	11	10	3	7	12	16
History	411	379	392	410	431	451	465	530	560	595
Independent	4	2	1	3	2	5	3	1	-	-
International Studies	-	40	67	64	56	45	31	32	35	57
Italian	4	5	7	6	4	5	3	5	2	7
Mathematics	176	190	168	123	148	135	134	194	200	196
Music	21	19	23	26	23	22	29	32	31	36
Philosophy	198	178	158	166	193	211	230	261	252	255
Physics	28	33	18	29	33	36	34	46	50	61
Romance Languages-Total	130	119	120	116	114	110	96	111	115	101
Political Science	747	700	671	618	649	626	646	669	693	796
Psychology	743	736	694	703	764	684	660	617	492	428
Slavic & Eastern Languages	18	12	8	11	11	7	5	12	15	15
Sociology	245	233	239	238	249	219	219	247	232	202
Spanish/Hispanic Studies	76	71	74	65	60	49	46	57	67	60
Studio Art	41	48	34	41	44	42	40	41	42	42
Theater Arts	43	66	87	84	106	101	91	91	107	124
Theology	36	47	54	70	80	88	92	137	130	151
Education										
American Heritage	2	4	2	2	1	2	2	4	8	7
Child in Society	86	99	88	67	65	49	40	31	30	26
Early Childhood	72	57	50	53	68	57	52	43	42	45
Elementary Education	196	231	222	217	224	256	279	297	294	270
General Science	3	5	2	4	6	4	2	3	5	1
Hispanic Experience	7	9	8	7	5	7	14	9	7	9
Human Development	191	231	258	289	290	277	285	276	295	314
Intensive Special Needs	22	29	28	41	27	21	15	4	-	-
Math/Computer Science	19	29	33	34	33	29	23	26	40	32
Moderate Special Needs	106	116	132	122	125	85	24	7	-	-
Secondary Education	104	143	152	146	160	123	143	148	155	161
Management										
Accounting	426	383	353	336	298	245	246	279	287	302
Accounting/Information Tech.	-	-	-	-	-	-	4	7	9	4
Computer Science	38	56	61	63	62	63	73	52	28	14
Corp. Reporting & Analysis	-	-	-	-	-	-	-	-	32	25
Economics	156	143	149	148	139	128	136	127	140	128
Economics/Op. Res.	3	-	-	-	-	-	-	-	-	-
Finance	702	747	743	783	797	732	665	679	717	763
General Management	268	258	250	232	259	215	189	159	136	125
Human Resource Management	59	67	59	62	54	30	45	39	37	38
Information Systems	50	82	94	136	159	181	176	128	85	50
Marketing	430	487	463	498	444	427	429	395	397	392
Operations & Technology Mgt.	55	67	79	87	79	86	65	65	48	29
Nursing										
	368	306	250	250	238	217	230	220	269	329

Note: This table includes each declared major. Students with double or triple majors are therefore counted two and three times; College of Advancing Studies students are not included in this table.
Source: Office of Student Services

UNDERGRADUATE MINORS BY SCHOOL, 1995-2004*

	1995	2000	2002	2003	2004
Arts & Sciences					
American Studies	12	10	22	25	24
Art History	0	4	11	11	10
Ancient Civilization	0	1	12	7	15
Asian Studies	4	4	11	14	16
Biopsychology	0	0	0	0	2
Black Studies	22	9	22	32	36
Chemistry	0	6	26	31	56
Classical Studies	0	3	1	0	0
Cognitive Sciences	3	4	7	2	0
Computer Science	21	33	19	21	11
Creative Writing	0	0	0	1	0
Economics	0	45	55	52	40
Environmental Studies	0	68	37	32	52
Faith, Peace, and Justice	28	33	104	84	78
Film Studies	25	24	37	47	58
French	0	28	41	53	67
General Education	44	41	31	36	27
Geology/Geophysics	0	3	3	5	6
German/Germanic Studies	0	8	12	9	14
Health Science	26	25	22	21	21
Hispanic Studies	0	82	73	73	82
History	0	65	136	177	178
Irish Studies	3	5	6	12	8
International Studies	43	28	47	87	124
Italian/Italian Studies	5	12	13	25	21
Latin American Studies	0	7	24	20	24
Mathematics	0	23	34	46	44
Math/Computer Science	0	2	1	0	1
Middle Eastern Studies	0	1	2	22	30
Music	0	19	43	39	30
Philosophy	0	21	35	48	68
Physics	0	3	3	2	4
Psychology Studies	0	0	0	3	10
Russian/Eastern Europe	0	0	3	3	5
Sociology	0	0	1	4	0
Scientific Computation	0	3	5	4	5
Secondary Education	51	28	22	17	15
Studio Art	0	18	37	45	53
Theology	0	11	26	35	32
Women's Studies	15	17	17	22	19
Education					
Hispanic Studies	0	8	1	0	3
Math/Elementary/Secondary	0	0	3	7	7
Organizational Studies	6	31	33	26	30
Special Education	0	28	50	55	46
Management					
Human Development	10	8	5	13	11
International Studies	15	8	8	6	0
Psychology/Management	0	9	2	2	3
Programs of Study					
Pre Dental	40	29	25	25	40
Pre Medical	1,145	900	1,014	1,086	1,095
Pre Law	837	479	606	613	624

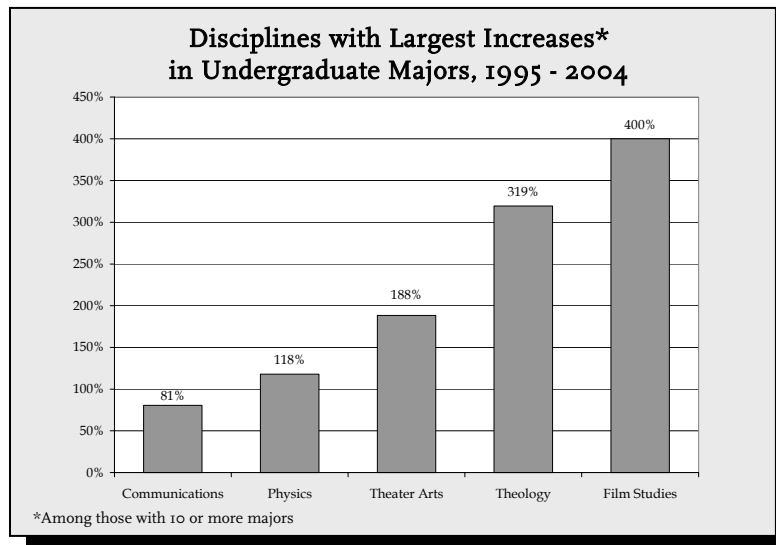
*2001 data not available

Source: Office of Student Services

MOST POPULAR UNDERGRADUATE MAJORS By Year

1995		2000		2004	
English	927	Communication	865	Communication	943
Biology	752	English	863	English	814
Political Science	747	Finance	732	Political Science	796
Psychology	743	Psychology	684	Finance	763
Finance	702	Political Science	626	History	595
Communication	522	Biology	481	Biology	581
Marketing	430	History	451	Psychology	428
Accounting	426	Marketing	427	Economics	411
History	411	Economics	382	Marketing	392
Nursing	368	Human Development	277	Nursing	329

Source: Office of Student Services



MOST POPULAR UNDERGRADUATE MINORS By Year

1995		2000		2004	
International Studies	58	Hispanic Studies	82	History	178
Secondary Education	51	Environmental Studies	68	International Studies	124
General Education	44	History	65	Hispanic Studies	82
Faith, Peace, and Justice	28	Economics	45	Faith, Peace, and Justice	78
Health Science	26	General Education	41	Philosophy	68
Film Studies	25	International Studies	36	French	67
Black Studies	22	Computer Science	33	Film Studies	58
Computer Science	21	Faith, Peace, and Justice	33	Chemistry	56
Women's Studies	15	Organizational Studies	29	Studio Art	53
American Studies	12	French	28	Environmental Studies	52
		Secondary Education	28		
		Special Education	28		

*Does not include Pre-Dental, Pre-Law, or Pre-Medical programs of study
Source: Office of Student Services

INTERNATIONAL STUDENTS & SCHOLARS By School, 2004-2005*

Arts & Sciences	78
Education	10
Management	83
Nursing	1
College of Advancing Studies	3
Exchange Students - Undergraduate	62
Total Undergraduate	237
Graduate Arts & Sciences	240
Graduate Education	76
Graduate Management	152
Graduate Nursing	4
Graduate Social Work	6
Law	17
Graduate Advancing Studies	5
Graduate Exchange Students	4
Graduate Visiting Students	46
Total Graduate/Professional	550
Total Enrolled Students	787
Practical Training**	106
Faculty and Research Scholars	142
Total	1,035

* These figures do not include students, faculty and scholars who will arrive in the spring 2005, which would add approximately 60-70 to the total international population for 2004-2005

** Students who have graduated from Boston College and who are undertaking a period of practical training in the United States
Source: Office of the Dean for Student Development

INTERNATIONAL STUDENTS & SCHOLARS By Class or Program, 2004-2005*

Freshmen	58
Sophomores	57
Juniors	19
Seniors	38
Undergraduate Exchange Students	62
Visiting Students	3
Total Undergraduate	237
Graduate/Professional	
M.A.	47
M.A.T.	0
M.B.A.	35
M.Ed.	17
M.S.	100
M.S.W.	5
C.A.E.S.	3
Ph.D.	276
J.D.	17
Graduate Exchange Students	4
Graduate Visiting Students	46
Total Graduate/Professional	550
Practical Training**	106
Faculty and Research Scholars	142
Total	1,035

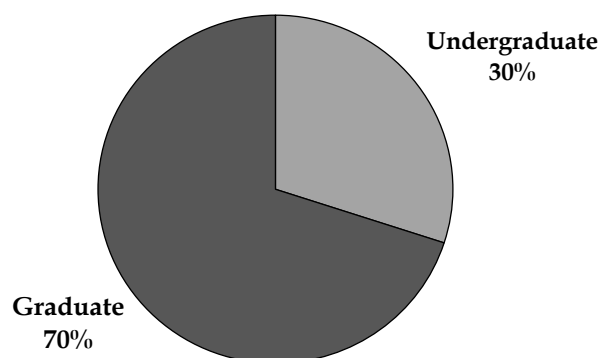
* These figures do not include students, faculty and scholars who will arrive in the spring 2005, which would add approximately 60-70 to the total international population for 2004-2005

** Students who have graduated from Boston College and who are undertaking a period of practical training in the United States
Source: Office of the Dean for Student Development

INTERNATIONAL STUDENTS & SCHOLARS By Gender and Program, 2004 - 2005

	Men	Women	Total
Undergraduate	115	122	237
Graduate	271	279	550
Practical Training*	40	66	106
Faculty and Research Scholars	83	59	142
Total	509	526	1,035

* Students who have graduated from Boston College and who are undertaking a period of practical training in the United States
Source: Office of the Dean for Student Development



INTERNATIONAL STUDENTS BY COUNTRY

Undergraduate and Graduate, 2004-2005

	Under-graduate	Graduate/ Professional	Total		Under-graduate	Graduate/ Professional	Total
Albania	1	1	2	Kuwait	-	2	2
Algeria	-	1	1	Latvia	-	1	1
Argentina	3	4	7	Lebanon	-	4	4
Armenia	-	3	3	Liberia	1	-	1
Australia	14	3	17	Lithuania	-	1	1
Austria	-	1	1	Malawi	-	1	1
Bahamas	1	-	1	Malaysia	1	1	2
Belarus	-	1	1	Mauritius	-	1	1
Bolivia	1	-	1	Mexico	2	3	5
Brazil	6	4	10	Moldova	-	1	1
Bulgaria	3	13	16	Morocco	1	5	6
Cameroon	-	1	1	Nepal	-	5	5
Canada	15	48	63	Netherlands	5	-	5
Chad	-	1	1	Nicaragua	1	-	1
Chile	2	4	6	Nigeria	1	5	6
China	5	144	149	Norway	1	-	1
Colombia	2	6	8	Palestine	-	6	6
Czech Republic	-	2	2	Panama	1	2	3
Denmark	4	-	4	Paraguay	1	-	1
Dominican Republic	6	3	9	Peru	1	6	7
Ecuador	6	1	7	Philippines	1	6	7
Egypt	2	2	4	Poland	1	-	1
El Salvador	1	1	2	Portugal	-	2	2
Ethiopia	-	1	1	Republic of the Congo	-	1	1
Finland	2	1	3	Romania	-	2	2
France	11	11	22	Russia	3	6	9
Georgia	-	1	1	Rwanda	-	2	2
Germany	9	5	14	Saudi Arabia	4	1	5
Ghana	-	1	1	Singapore	5	5	10
Greece	4	2	6	Slovakia	1	1	2
Haiti	1	-	1	Slovenia	-	1	1
Hong Kong	4	1	5	Spain	7	6	13
Hungary	1	-	1	Sweden	-	1	1
Iceland	2	1	3	Taiwan	2	16	18
India	4	28	32	Tanzania	-	1	1
Indonesia	4	4	8	Thailand	1	7	8
Ireland	6	12	18	Trinidad & Tobago	1	-	1
Israel	2	6	8	Tunisia	-	2	2
Italy	6	13	19	Turkey	2	19	21
Jamaica	-	4	4	Uganda	1	5	6
Japan	5	14	19	Ukraine	-	3	3
Jerusalem	-	1	1	United Kingdom	11	12	23
Jordan	1	3	4	Venezuela	4	5	9
Kazakhstan	1	3	4	Vietnam	-	4	4
Kenya	1	4	5	Yugoslavia	-	1	1
Korea South	40	35	75	Zimbabwe	-	1	1
				Total	237	550	787
				Countries Represented			94

Source: Office of the Dean for Student Development

UNDERGRADUATE AND GRADUATE DEGREES CONFERRED*

By Degree and Gender

	1999-2000			2000-2001			2001-2002			2002-2003			2003-2004		
	Men	Women	Total	Men	Women	Total	Men	Women	Total	Men	Women	Total	Men	Women	Total
Undergraduate															
Arts & Sciences															
A.B.	583	626	1,209	594	652	1,246	538	690	1,228	637	701	1,338	574	604	1,178
B.S.	96	75	171	80	80	160	76	81	157	82	52	134	90	67	157
Total Arts & Sciences	679	701	1,380	674	732	1,406	614	771	1,385	719	753	1,472	664	671	1,335
Education - A.B.															
	26	196	222	20	184	204	27	171	198	27	157	184	24	171	195
Management - B.S.															
	381	276	657	376	206	582	352	215	567	325	201	526	369	186	555
Nursing - B.S.															
	2	58	60	1	46	47	2	62	64	1	42	43	1	45	46
Subtotal Undergraduate															
Day Degrees Conferred	1,088	1,231	2,319	1,071	1,168	2,239	995	1,219	2,214	1,072	1,153	2,225	1,058	1,073	2,131
Advancing Studies - A.B.															
	43	54	97	47	50	97	56	41	97	42	46	88	48	44	92
Total Undergraduate															
Degrees Conferred	1,131	1,285	2,416	1,118	1,218	2,336	1,051	1,260	2,311	1,114	1,199	2,313	1,106	1,117	2,223
Graduate															
Ph.D	53	63	116	40	69	109	55	65	120	54	77	131	55	62	117
D.Ed	-	-	-	-	-	-	-	-	-	5	7	12	1	4	5
M.A.	65	173	238	98	196	294	94	168	262	81	169	250	88	225	313
M.S.	108	115	223	93	112	205	97	85	182	109	122	231	117	126	243
M.Ed.	39	191	230	51	178	229	21	173	194	34	167	201	40	152	192
M.A.T.	2	1	3	1	4	5	1	3	4	2	3	5	0	3	3
M.S.W.	27	156	183	27	143	170	20	132	152	15	136	151	28	140	168
M.S.T.	3	2	5	1	1	2	-	3	3	-	-	-	2	1	3
M.B.A.	178	90	268	155	99	254	193	97	290	160	90	250	157	99	256
C.A.E.S.	2	10	12	3	9	12	-	13	13	1	4	5	6	11	17
Total Graduate															
Degrees Conferred	477	801	1,278	469	811	1,280	481	739	1,220	461	775	1,236	494	823	1,317
Professional															
J.D.	127	173	300	130	132	262	150	118	268	115	158	273	130	145	275
Total Graduate and Professional															
Degrees Conferred	604	974	1,578	599	943	1,542	631	857	1,488	576	933	1,509	624	968	1,592
Total Degrees															
Conferred	1,735	2,259	3,994	1,717	2,161	3,878	1,682	2,117	3,799	1,690	2,132	3,822	1,730	2,085	3,815

*August, December, and May graduations combined
Source: Office of Student Services

UNDERGRADUATE DEGREES CONFERRED***By Degree and Number of Majors**

	1999-2000	2000-2001	2001-2002	2002-2003	2003-2004
College of Arts and Sciences					
A.B.					
Single Major	971	1061	1032	1117	964
Double Major	237	184	192	220	213
Triple Major	1	1	4	1	1
Total A.B. Degrees	1,209	1,246	1,228	1,338	1,178
B.S.					
Single Major	149	149	142	125	134
Double Major	22	11	15	9	23
Triple Major	-	-	-	-	-
Total B.S. Degrees	171	160	157	134	157
Total College of Arts & Sciences	1,380	1,406	1,385	1,472	1,335
Lynch School of Education - A.B.					
Single Major	39	55	41	40	40
Double Major	181	149	157	144	154
Triple Major	2	-	-	-	1
Total Lynch School of Education	222	204	198	184	195
Carroll School of Management - B.S.					
Single Major	430	374	346	312	299
Double Major	220	201	221	205	248
Triple Major	7	7	-	9	8
Total Carroll School of Management	657	582	567	526	555
Connell School of Nursing					
Single Major	60	47	63	42	46
Double Major	-	-	1	1	-
Total Connell School of Nursing	60	47	64	43	46
Subtotal-Undergraduate Day Degrees Conferred	2,319	2,239	2,214	2,225	2,131
Woods College of Advancing Studies - A.B.					
Single Major	97	97	97	86	88
Double Major	-	-	-	2	4
Triple Major	-	-	-	-	-
Total Woods College of Advancing Studies	97	97	97	88	92
Total Undergraduate Degrees Conferred	2,416	2,336	2,311	2,313	2,223

*August, December, and May graduations combined
Source: Office of Student Services

UNDERGRADUATE DEGREES CONFERRED

By Major*

	1999-2000	2000-2001	2001-2002	2002-2003	2003-2004
Accounting	103	77	66	89	99
Accounting/Information Technology	-	-	-	1	3
Art History	14	7	10	14	15
Biochemistry	25	15	21	15	17
Biology	96	109	88	81	94
Chemistry	24	18	18	23	26
Child in Society	4	4	5	-	1
Classics	4	1	4	3	2
Communication	180	215	227	240	192
Computer Science	60	54	58	57	48
Corporate Reporting & Analysis	-	-	-	-	1
Early Childhood Education	12	11	13	12	9
Economics	170	133	147	143	145
Elementary Education	49	47	64	58	78
Elementary Education & Moderate Special Needs	42	30	7	7	-
English	203	215	211	232	199
Environmental Geosciences	9	10	19	8	7
Film Studies	-	1	7	4	7
Finance	259	257	208	206	221
French	11	8	11	7	9
Geology	6	-	-	-	-
Geophysics	2	2	2	-	-
Geology/Geophysics	3	1	1	-	2
German	5	3	-	3	0
Hispanic Studies	13	8	6	8	7
History	115	119	125	145	143
Human Development	66	85	79	75	81
Independent	3	2	1	1	-
Information Systems	22	27	43	32	18
International Studies	23	28	14	12	12
Italian	-	1	-	2	1
Linguistics	1	1	1	1	0
Management	25	17	18	21	15
Marketing	167	147	160	124	135
Mathematics	27	25	22	32	28
Mathematics/Computer Science	1	-	3	-	-
Music	6	4	5	4	4
Nursing	60	47	64	43	46
Operations & Technology Management	15	19	14	16	15
Organizational Studies/Human Resource Management	20	9	12	6	6
Philosophy	40	42	35	62	49
Physics	6	5	7	6	13
Political Science	123	134	130	121	121
Psychology	151	146	155	151	133
Russian	1	1	1	-	1
Secondary Education	40	22	24	29	26
Severe Special Needs	8	5	3	3	-
Slavic Studies	1	-	-	-	-
Sociology	64	89	53	87	61
Studio Art	6	11	9	6	4
Theatre	17	16	21	14	10
Theology	17	11	22	21	27
TOTAL**	2,319	2,239	2,214	2,225	2,131

*Double and triple majors counted by first major

**Woods College of Advancing Studies majors are not included in this total

Source: Office of Student Services

UNDERGRADUATE DEGREES CONFERRED

By School and Major*

	2001-2002						2002-2003						2003-2004					
	A&S		Ed	Mgt	Nurs	Total	A&S		Ed	Mgt	Nurs	Total	A&S		Ed	Mgt	Nurs	Total
	AB	BS	AB	BS	BS		AB	BS	AB	BS	BS		AB	BS	AB	BS	BS	
Accounting	-	-	-	66	-	66	-	-	-	89	-	89	-	-	-	99	-	99
Accounting/Information Tech	-	-	-	-	-	-	-	-	-	1	-	1	-	-	-	3	-	3
Art History	10	-	-	-	-	10	14	-	-	-	-	14	15	-	-	-	-	15
Biochemistry	-	21	-	-	-	21	-	15	-	-	-	15	-	17	-	-	-	17
Biology	-	88	-	-	-	88	1	80	-	-	-	81	9	85	-	-	-	94
Chemistry	-	18	-	-	-	18	-	23	-	-	-	23	-	26	-	-	-	26
Child in Society	-	-	5	-	-	5	-	-	-	-	-	0	-	-	1	-	-	1
Classics	4	-	-	-	-	4	3	-	-	-	-	3	2	-	-	-	-	2
Communication	227	-	-	-	-	227	240	-	-	-	-	240	192	-	-	-	-	192
Computer Science	40	-	-	18	-	18	47	2	-	8	-	57	27	7	-	14	-	48
Corporate Reporting & Analysis	-	-	-	-	-	-	-	-	-	-	-	-	-	-	-	1	-	1
Early Childhood Education	-	-	13	-	-	13	-	-	12	-	-	12	-	-	9	-	-	9
Economics	119	-	-	28	-	147	120	-	-	23	-	143	117	-	-	28	-	145
Elementary Education	-	-	64	-	-	64	-	-	58	-	-	58	-	-	78	-	-	78
Elementary Education & Moderate Special Needs	-	-	7	-	-	7	-	-	7	-	-	7	-	-	-	-	-	-
English	211	-	-	-	-	211	232	-	-	-	-	232	199	-	-	-	-	199
Environmental Geosciences	-	19	-	-	-	19	-	8	-	-	-	8	-	7	-	-	-	7
Finance	-	-	-	208	-	208	-	-	-	206	-	206	-	-	-	221	-	221
Film Studies	7	-	-	-	-	7	4	-	-	-	-	4	7	-	-	-	-	7
French	11	-	-	-	-	11	7	-	-	-	-	7	9	-	-	-	-	9
Geology	-	-	-	-	-	-	-	-	-	-	-	-	-	-	-	-	-	-
Geophysics	-	2	-	-	-	2	-	-	-	-	-	-	-	-	-	-	-	-
Geology/Geophysics	-	1	-	-	-	1	-	-	-	-	-	-	-	2	-	-	-	2
German	-	-	-	-	-	-	3	-	-	-	-	3	-	-	-	-	-	-
Hispanic Studies	6	-	-	-	-	6	8	-	-	-	-	8	7	-	-	-	-	7
History	125	-	-	-	-	125	145	-	-	-	-	145	143	-	-	-	-	143
Human Development	-	-	79	-	-	79	-	-	75	-	-	75	-	-	81	-	-	81
Independent	-	1	-	-	-	1	1	-	-	-	-	1	-	-	-	-	-	-
Information Systems	-	-	-	43	-	43	-	-	-	32	-	32	-	-	-	18	-	18
International Studies	14	-	-	-	-	14	12	-	-	-	-	12	12	-	-	-	-	12
Italian	-	-	-	-	-	-	2	-	-	-	-	2	1	-	-	-	-	1
Linguistics	1	-	-	-	-	1	1	-	-	-	-	1	-	-	-	-	-	-
Management	-	-	-	18	-	18	-	-	-	21	-	21	-	-	-	15	-	15
Marketing	-	-	-	160	-	160	-	-	-	124	-	124	-	-	-	135	-	135
Mathematics	22	-	-	-	-	22	32	-	-	-	-	32	28	-	-	-	-	28
Mathematics/Computer Science	-	-	3	-	-	3	-	-	-	-	-	-	-	-	-	-	-	-
Music	5	-	-	-	-	5	4	-	-	-	-	4	4	-	-	-	-	4
Nursing	-	-	-	-	64	64	-	-	-	-	43	43	-	-	-	-	46	46
Operations & Technology Mgmt	-	-	-	14	-	14	-	-	-	16	-	16	-	-	-	15	-	15
Organizational Studies/ Human Resource Management	-	-	-	12	-	12	-	-	-	6	-	6	-	-	-	6	-	6
Philosophy	35	-	-	-	-	35	62	-	-	-	-	62	49	-	-	-	-	49
Physics	-	7	-	-	-	7	-	6	-	-	-	6	-	13	-	-	-	13
Political Science	130	-	-	-	-	130	121	-	-	-	-	121	121	-	-	-	-	121
Psychology	155	-	-	-	-	155	151	-	-	-	-	151	133	-	-	-	-	133
Russian	1	-	-	-	-	1	-	-	-	-	-	-	1	-	-	-	-	1
Secondary Education	-	-	24	-	-	24	-	-	29	-	-	29	-	-	26	-	-	26
Severe Special Needs	-	-	3	-	-	3	-	-	3	-	-	3	-	-	-	-	-	-
Slavic Studies	-	-	-	-	-	-	-	-	-	-	-	-	-	-	-	-	-	-
Sociology	53	-	-	-	-	53	87	-	-	-	-	87	61	-	-	-	-	61
Studio Art	9	-	-	-	-	9	6	-	-	-	-	6	4	-	-	-	-	4
Theatre	21	-	-	-	-	21	14	-	-	-	-	14	10	-	-	-	-	10
Theology	22	-	-	-	-	22	21	-	-	-	-	21	27	-	-	-	-	27
Total**	1,228	157	198	567	64	2,174	1,338	134	184	526	43	2,225	1,178	157	195	555	46	2,131

*Double & triple majors counted by first major

**Woods College of Advancing Studies majors are not included in this total

Source: Office of Student Services

GRADUATE DEGREES CONFERRED, 2003-2004*

By School, Degree, Primary Field, and Gender

	Doctorates			Master's/Certificates/J.D.			Total		
	Men	Women	Total	Men	Women	Total	Men	Women	Total
Graduate School of Arts & Sciences									
Humanities									
American Studies	-	-	-	-	-	-	-	-	-
Classics	-	-	-	-	-	-	-	-	-
English	1	1	2	7	32	39	8	33	41
History	4	1	5	2	8	10	6	9	15
Latin & Greek	-	-	-	1	0	1	1	0	1
Linguistics	-	-	-	0	1	1	0	1	1
Pastoral Ministry	-	-	-	9	24	33	9	24	33
Philosophy	2	2	4	14	9	23	16	11	27
Religion & Education	-	1	1	-	-	-	0	1	1
Romance Languages	1	5	6	2	6	8	3	11	14
Russian	-	-	-	-	1	1	-	1	1
Slavic Studies	-	-	-	-	-	-	-	-	-
Theology	6	4	10	7	6	13	13	10	23
Social Sciences									
Economics	4	5	9	6	8	14	10	13	23
Political Science	-	-	-	4	3	7	4	3	7
Psychology	-	-	-	-	-	-	-	-	-
Sociology	2	2	4	2	5	7	4	7	11
Sciences									
Biology	1	-	1	1	-	1	2	0	2
Chemistry	12	4	16	-	1	1	12	5	17
Geology/Geophysics	-	-	-	4	3	7	4	3	7
Mathematics	-	-	-	4	-	4	4	-	4
Physics	4	1	5	2	-	2	6	1	7
Total - Graduate Arts & Sciences	37	26	63	65	107	172	102	133	235
Lynch Graduate School of Education									
Counseling/Counseling Psychology	1	4	5	18	72	90	19	76	95
Curriculum & Instruction & Sp Ed	1	8	9	33	139	172	34	147	181
Developmental/Educational Psych	-	3	3	3	22	25	3	25	28
Educ. Research/Measurement/Evaluation	2	3	3	-	3	3	2	6	8
Higher Education Administration	4	4	8	11	30	41	15	34	49
Religious Education	-	-	-	5	13	18	5	13	18
Educational Administration	3	2	5	8	10	18	11	12	23
Professional School Administration Program	1	4	5	-	-	-	1	4	5
Total - Graduate Education	12	28	40	78	289	367	90	317	407
Carroll Graduate School of Management									
Business Administration	-	-	-	157	99	256	157	99	256
Finance	4	-	4	75	29	104	79	29	108
Organizational Studies	1	3	4	-	-	-	1	3	4
Accounting	-	-	-	12	24	36	12	24	36
Total - Graduate Management	5	3	8	244	152	396	249	155	404
Connell Graduate School of Nursing									
Nursing	0	8	8	2	41	43	2	49	51
Graduate School of Social Work									
Social Work	2	1	3	28	140	168	30	141	171
Woods College of Advancing Studies									
Administrative Studies	-	-	-	21	28	49	21	28	49
Law School - Law (J.D.)									
	-	-	-	130	145	275	130	145	275
Total Graduate & Professional Degrees	56	66	122	568	902	1,470	624	968	1,592

*August, December and May graduations combined Source: Office of Student Services

UNDERGRADUATE FINANCIAL AID, 1999-2004

Dollars Awarded

	1999-00	2000-01	2001-02	2002-03	2003-04
Undergraduates (All) Receiving:					
Need-Based Financial Aid	44%	42%	37%	38%	42%
Financial Assistance of All Types*	71%	71%	71%	70%	71%
Average Need-Based Scholarship or Grant	\$13,528	\$13,275	\$16,239	\$16,820	\$17,698
Average Need-Based Financial Aid Package**	\$19,267	\$18,830	\$22,879	\$22,859	\$23,215

Entering Freshmen Receiving:

Need-Based Financial Aid	47%	45%	40%	39%	40%
Average Need-Based Scholarship or Grant	\$13,750	\$13,941	\$16,121	\$17,386	\$17,638
Average Need-Based Financial Aid Package**	\$17,740	\$18,240	\$21,214	\$22,072	\$22,698

Undergraduate Scholarships and Grants

University	\$48,349,421	\$49,745,196	\$53,350,054	\$55,242,758	\$62,096,910
Federal	\$4,103,237	\$3,840,815	\$4,235,202	\$4,174,670	\$4,221,850
State	\$1,744,990	\$2,038,684	\$2,121,486	\$1,839,217	\$1,583,459
Total Scholarships and Grants***	\$54,197,648	\$55,624,695	\$59,706,742	\$61,256,645	\$67,902,219

* Includes all sources (institutional, private, state, and federal) of assistance made available by Boston College in the form of loans, work, grants, and scholarships

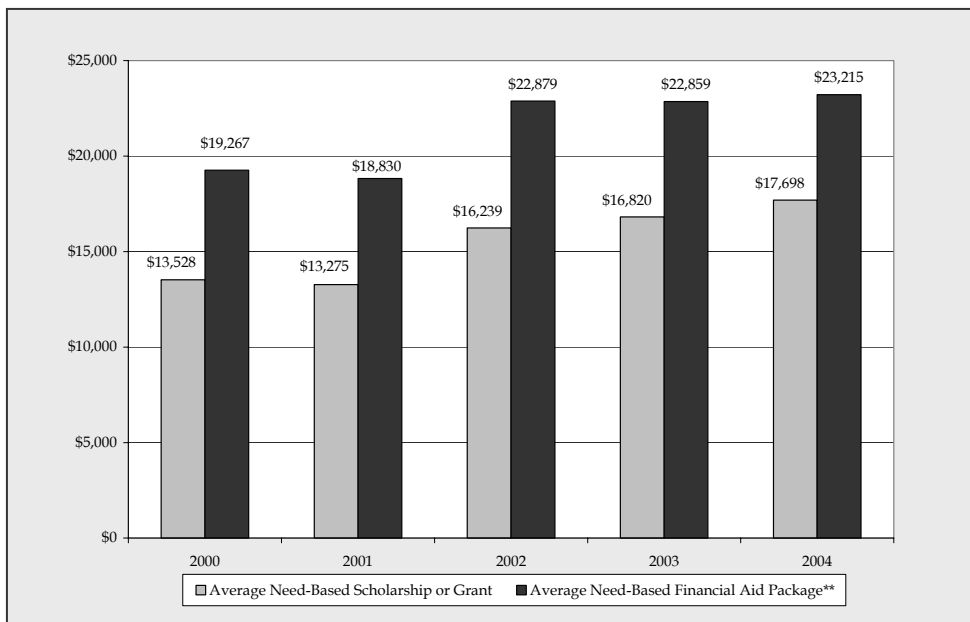
** Awarded package may include loans, work, grants, and scholarships

*** Does not include employee tuition remission benefits

Source: Office of Enrollment Management

AVERAGE NEED-BASED FINANCIAL AID, 1999-2004

ALL UNDERGRADUATES



UNDERGRADUATE STUDENT GRADUATION AND RETENTION RATES Freshman Matriculants in Fall 1997*

Rating at Time of Admission	Number of Fall Matriculants	Transfers Out in Good Standing		Within Twelve Semesters Graduates		Retention Rate**
		Number	Percent	Number	Percent	
Top 5%	126	7	6%	113	90%	96%
Next 20%	712	46	6%	634	89%	95%
Remaining 75%	1,148	34	3%	1,027	89%	92%
Total	1,986	87	4%	1,774	89%	93%

* "Retention Rate" is the "graduation rate" plus the "transfer out rate" of students to another college, and is based on the national standard of six years after matriculation
Source: Office of Enrollment Management Research: March 2004

COMPETITIVE FELLOWSHIPS AND AWARDS, 1995 - 2004 Received by Undergraduates

Award	Total Number Received
Andrew Mellon Scholarship	4
Barry M. Goldwater Scholarship.....	8
Beckman Scholarship	8
Beinecke Memorial Scholarship	3
Freeman/ ASIA Scholarship.....	19
Gates-Cambridge Scholarship	1
George C. Marshall Scholarship.....	4
Harry S. Truman Scholarship	5
Institute for International Public Policy Fellowship	2
J. William Fulbright Grant (Undergraduate)	69
James Madison Scholarship	1
National Science Foundation Graduate Research Fellowships.....	4
National Security Education Program Fellowship	16
Rhodes Scholarship.....	2
Rotary International Ambassadorial Scholarship	4
Thomas Pickering Scholarship	2
Winston Churchill Scholarship	1

Source: University Fellowship Committee