

BOARD OF TRUSTEE MEMBERSHIP 2004-2005

Peter W. Bell, '86

Managing Director
YankeeTek Ventures

Geoffrey T. Boisi, '69

J. P. Morgan Chase & Company

Patrick Carney, '70

Chairman and Chief Executive Officer
Claremont Companies

Darcel D. Clark, '83

Acting Justice of the Supreme Court
State of New York

Charles I. Clough, Jr., '64

Chairman and Chief Executive Officer
Clough Capital Partners

***John M. Connors Jr., '63**

Chairman
Hill, Holliday, Connors, Cosmopolos, Inc.

***Kathleen A. Corbet, '82**

President
Standard and Poor's

***Joseph E. Corcoran, '59**

Chairman
Corcoran Jennison Companies

Robert F. Cotter, '73

President and Chief Operating Officer
Starwood Hotels & Resorts Worldwide, Inc.

Robert M. Devlin

Chairman
Curragh Capital Partners

Francis A. Doyle, '70, MBA '75

President and Chief Executive Officer
Connell Limited Partnership

Cynthia Lee Egan, '78

Executive Vice President
Fidelity Management Research
Corporation

Mario J. Gabelli

Chairman and Chief Investment Officer
Gabelli Asset Management

William J. Geary, '80

Partner
North Bridge Venture Partners

Susan McManama Gianinno, '70

Chairman and CEO
Publicis USA

Mary J. Steele Guilfoile, '76

Chairman
MG Advisors, Inc.

***Paul F. Harman, S.J., '61, MA '62**

Rector of the Jesuit Community
Boston College

Daniel J. Harrington, S.J., '64, MA '65

Professor of New Testament
Weston Jesuit School of Theology

John L. Harrington, '57, MBA '66

Trustee and Executive Director
Yawkey Foundation

Robert K. Kraft

Chairman
The Kraft Group

Robert B. Lawton, S.J.

President
Loyola Marymount University

***William P. Leahy, S.J.**

President
Boston College

Peter S. Lynch, '65, LL.D. '95 (Hon.)

Vice Chairman
Fidelity Management and Research
Company

Peter K. Markell, '77

Vice President of Finance
Partners HealthCare System, Inc.

**Kathleen M. McGillicuddy, '71
(Newton College)**

Former Executive Vice President
FleetBoston Financial

***Robert J. Morrissey, Esq., '60**

Partner
Morrissey, Hawkins & Lynch

John P. Murray, S.J.

***R. Michael Murray, Jr., '61, M.A. '65**
Member, McKinsey Advisory Committee
McKinsey & Company, Inc.

Thomas P. O'Neill III, '68

Chief Executive Officer
O'Neill and Associates

Scott R. Pilarz, S.J.

President
University of Scranton

Sally Engelhard Pingree

Director and Vice Chairman
Engelhard Hanovia, Inc.

Paula D. Polito, '81

Senior Vice President
Merrill Lynch

R. Robert Popeo, Esq., J.D. '61

Chairman
Mintz, Levin, Cohn, Ferris, Glovsky &
Popeo, P.C.

John J. Powers, '73

Managing Director
Goldman Sachs & Company

Richard F. Powers III, '67

Advisory Director
Morgan Stanley

Pierre-Richard Prosper, '85

U.S. Ambassador-at-Large for War Crimes

Thomas F. Ryan, Jr., '63

Retired, Private Investor

***Rev. Nicholas A. Sannella, '67**

Bradley M. Schaeffer, S.J., M.Ed '73
President of the Jesuit Conference

Randall P. Seidl, '85

Vice President and General Manager
StorageTek

***Marianne D. Short, Esq., '73**

(Newton College), J.D. '76
Dorsey & Whitney LLP

***Patrick T. Stokes, '64**

President and Chief Executive Officer
Anheuser-Busch Companies, Inc.

Richard F. Syron, '66, L.D. '89 (Hon.)

Chairman and Chief Executive Officer
Freddie Mac

Solomon D. Trujillo

Jeffrey P. von Arx, S.J.

President
Fairfield University

***Benaree P. Wiley**

President and Chief Executive Officer
The Partnership, Inc.

†Only Boston College degrees listed

*Executive Committee Member

Source: President's Office

TRUSTEE ASSOCIATE MEMBERSHIP 2004-2005

Mary Jane Vouté Arrigoni
Greenwich, CT

Gregory P. Barber, '69
Chairman
Gregory P. Barber & Associates, Inc.

Casey C. Beaumier, S.J.
Weston Jesuit School of Theology

Wayne A. Budd, Esq., '63
Senior Counsel
Goodwin Procter LLP

Denis H. Carroll, '64
Chairman and Chief Executive Officer
CRL Industries, Inc.

James F. Cleary, '50, D.B.A. '93 (Hon.)
Advisory Director
UBS

Christopher S. Collins, S.J.
Weston Jesuit School of Theology

John F. Cunningham, '64
Chairman and Chief Executive Officer
Cunningham and Company

Brian E. Daley, S.J.
Professor, Department of Theology
University of Notre Dame

Michael A. Fahey, S.J., '57, L.Th. '65
Professor, Department of Theology
Marquette University

Emilia M. Fanjul
Boston College Parent

John F. Farrell Jr.
Chairman
Automatic Service Company

Yen-Tsai Feng
Roy E. Larsen Librarian (Ret.)
Harvard College

Charles D. Ferris, Esq., '54, J.D. '61, LL.D '78 (Hon.)
Senior Partner
Mintz, Levin, Cohn, Ferris, Glovsky & Popeo, P.C.

Thomas J. Flanagan, '42
Chairman, President and Chief Executive Officer
The Flanagan Group-Technology Consulting

Thomas J. Flatley
President
The Flatley Company

Thomas J. Galligan Jr., '41, D.B.A. '75 (Hon.)
Chairman and Chief Executive Officer (Ret.)
Boston Edison Company

John J. Higgins, S.J., '59, M.A. '60, S.T.L. '67
Executive Assistant to the Provincial
New England Province

Richard T. Horan, '53
President
Hughes Oil Company

George W. Hunt, S.J.
Director, Archbishop Hughes Institute
Fordham University

Richard A. Jalkut, '66
President and Chief Executive Officer
TelePacific Communications

Anne P. Jones, Esq., '58, J.D. '61
Consultant

Michael D. Jones, Esq., '72, J.D. '76
Senior Executive Vice President and Chief Administrative Officer
National Association of Securities Dealers, Inc.

Edmund F. Kelly
Chairman, President and Chief Executive Officer
Liberty Mutual Group

Mark A. Kramer, S.J.
Weston Jesuit School of Theology

Judith B. Krauss, '68
Professor of Nursing & Master, Silliman College
Yale University

Francis C. Mackin, S.J., '53
Pastoral Ministry
Boston College

John J. McMullen
Chairman
McMullen Consultants, Inc.

Catherine T. McNamee, C.S.J., M.Ed '55, M.A. '58
Profesora
Universidad Catolica del Maule

John A. McNeice Jr., '54, DBA '97 (Hon.)
Chairman and Chief Executive Officer (Ret.)
The Colonial Group, Inc.

Robert A. Mitchell, S.J.
Superior
America House

Giles E. Mosher Jr., '55
Vice Chairman (Emeritus)
FleetBoston

Robert J. Murray, '62
Chairman and Chief Executive Officer
New England Business Service, Inc.

Therese E. Myers, '66 (Newton College)
Chief Executive Officer
Bouquet Multimedia, LLC

Kevin F. O'Brien, S.J.
Weston Jesuit School of Theology

Edward M. O'Flaherty, S.J., '59, Th.M. '66
Director, Office of Ecumenical and Interreligious Affairs
Archdiocese of Boston

Thomas D. O'Malley
Chairman
Premcor, Inc.

Cornelius W. Owens, '36, LL.D. '68 (Hon.)
Executive Vice President (Ret.)
AT&T

Brian G. Paulson, S.J.
President
St. Ignatius College Prep

Nicholas S. Rashford, S.J.
President
St. Joseph's University

Thomas J. Rattigan, '60

John J. Shea, S.J., M.Ed. '70
Vice President for University Ministries
University of Scranton

TRUSTEE ASSOCIATE MEMBERSHIP 2004-2005 (Continued)

Sylvia Q. Simmons, M.Ed. '62, Ph.D. '90
President (Ret.)
American Student Assistance Corporation

Robert L. Sullivan, '50, M.A. '52
International Practice Director (Ret.)
Peat, Marwick, Mitchell & Company

John S. Thiede, S.J.
Instructor of Theology
Creighton University

Salvatore J. Trani
President and Chief Executive Officer
Garban Corporates, LLC

Thomas A. Vanderslice, '53
Private Investor

Vincent A. Wasik
President
MCG Global, LLC

Blenda J. Wilson, Ph.D., '79
President and Chief Executive Officer
Nellie Mae Education Foundation

†Only Boston College degrees listed
Source: President's Office

BOARD OF TRUSTEE CHAIRMEN

Cornelius W. Owens	1972-1975
Thomas J. Galligan, Jr.	1975-1978
James P. O'Neill	1978-1981
William F. Connell	1981-1984
David S. Nelson	1984-1987
Thomas A. Vanderslice	1987-1990
John M. Connors, Jr.	1990-1993
Geoffrey T. Boisi	1993-1996
Richard F. Syron	1996-1999
Charles I. Clough, Jr.	1999-2002
John M. Connors, Jr.	2002-

THE JESUIT COMMUNITY AT BOSTON COLLEGE

With 112 members, the Jesuit Community at Boston College is one of the larger communities in the Society of Jesus. Fifty-six Jesuits serve in the University as members of the administration, faculty, or staff, working either full-time or part-time. A number of Jesuits in the community also offer Ignatian retreats and spiritual direction to faculty, staff, and students. Also part of the community are 26 Jesuits from 16 different countries who are studying for graduate degrees at the University or are visiting scholars from other various parts of the world.

The main community residence is St. Mary's Hall, but there are also five smaller communities around the perimeter of the campus. Eight Jesuits live in the residence halls. The Jesuits who staff St. Ignatius Parish are also part of the Boston College Jesuit Community. For further details, including a list of courses taught by Jesuits at Boston College, see the Jesuit Community Web page at <http://fmwww.bc.edu/SJ>.

Source: Rector, Jesuit Community

OFFICERS OF THE UNIVERSITY**2004-2005****President**

William P. Leahy, S.J.

Chancellor

J. Donald Monan, S.J.

Executive Vice President

Patrick J. Keating

Academic Vice President and Dean of Faculties

John J. Neuhauser

Vice President for University Mission and Ministry

Joseph A. Appleyard, S.J.

Vice President, Office of the President

Mary Lou DeLong

Vice President for Facilities Management

Thomas Devine

Secretary of the University

Joseph P. Duffy, S.J.

Vice President for University Advancement

James J. Husson

Vice President for Governmental & Community Affairs

Thomas J. Keady

Senior Vice President

James P. McIntyre

Financial Vice President and Treasurer

Peter C. McKenzie

Vice President for Information Technology Services

Marian G. Moore

Vice President and Special Assistant to the President

William B. Neenan, S.J.

Vice President for Student Affairs

Ceryl L. Presley

Vice President for Human Resources

Leo V. Sullivan

Source: Department of Human Resources

ACADEMIC ADMINISTRATION**2004-2005**

John J. Neuhauser, Academic Vice President and Dean of Faculties
 Michael A. Smyer, Associate Academic Vice President for Research and Dean of the Graduate School of Arts and Sciences
 J. Joseph Burns, Associate Academic Vice President for Undergraduate Programs
 Patricia E. A. DeLeeuw, Associate Academic Vice President for Faculties
 Rita R. Owens, Associate Academic Vice President for Technology

Enrollment Management

Robert S. Lay, Dean

The Woods College of Advancing Studies

James A. Woods, S.J., Dean

The College of Arts and Sciences

Joseph F. Quinn, Dean
 Mary Daniel O'Keefe, O.P., Associate Dean
 Robert O. Scott, Associate Dean
 William H. Petri, Associate Dean
 Ourida Mostefai, Interim Associate Dean
 Barbara A. Viechnicki, Associate Dean for Finance and Administration

The Graduate School of Arts and Sciences

Michael A. Smyer, Dean
 Candace Hetzner, Associate Dean, Academic Affairs
 Robert V. Howe, Associate Dean, Admission & Administration

The Lynch School of Education

Joseph M. O'Keefe, S.J., Interim Dean
 M. Brinton Lykes, Interim Associate Dean
 John E. Cawthorne, Associate Dean for Students and Outreach
 Mary Ellen Fulton, Associate Dean for Finance, Research, and Administration

The Law School

John H. Garvey, Dean
 George D. Brown, Associate Dean for Academic Affairs
 Filippa M. Anzalone, Associate Dean for Library and Computing Services
 Norah Wylie, Associate Dean for Students
 Henry E. Clay, Associate Dean for Finance and Administration
 Marianne E. Lord, Associate Dean for Institutional Advancement

The Carroll School of Management

Andrew Boynton, Dean
 Robert A. Taggart, Associate Dean (Graduate)
 Richard T. Keeley, Associate Dean (Undergraduate)
 Eugene McMahon, Assistant Dean for Administration

The Connell School of Nursing

Barbara Hazard, Dean
 Lois Haggerty, Associate Dean (Graduate)
 Loretta P. Higgins, Associate Dean (Undergraduate)
 Susan E. Donelan, Assistant Dean for Administration

The Graduate School of Social Work

Alberto Godenzi, Dean
 Thomas Walsh, Associate Dean
 Harry E. Dumay, Assistant Dean for Finance and Administration

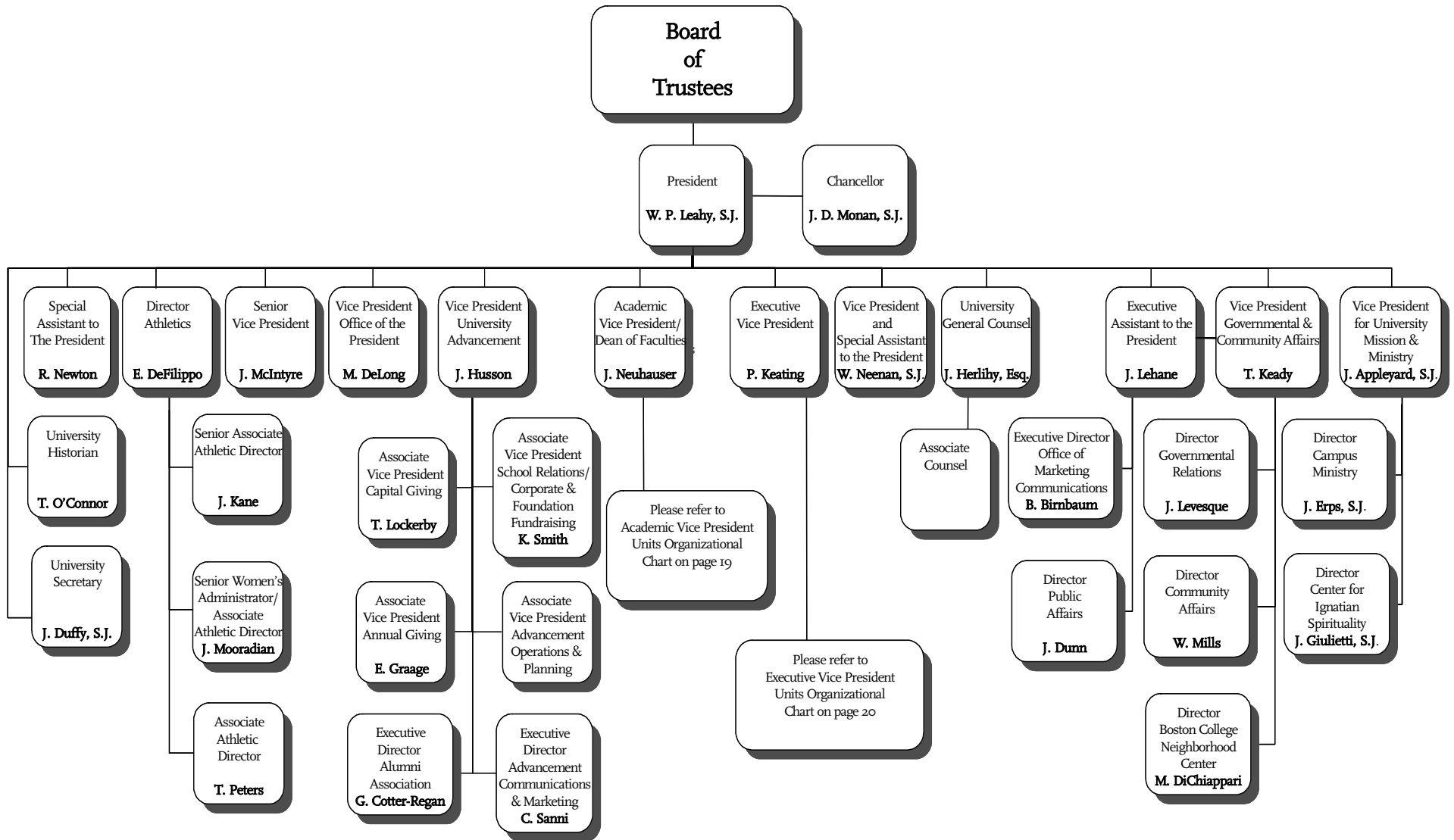
The Summer Session

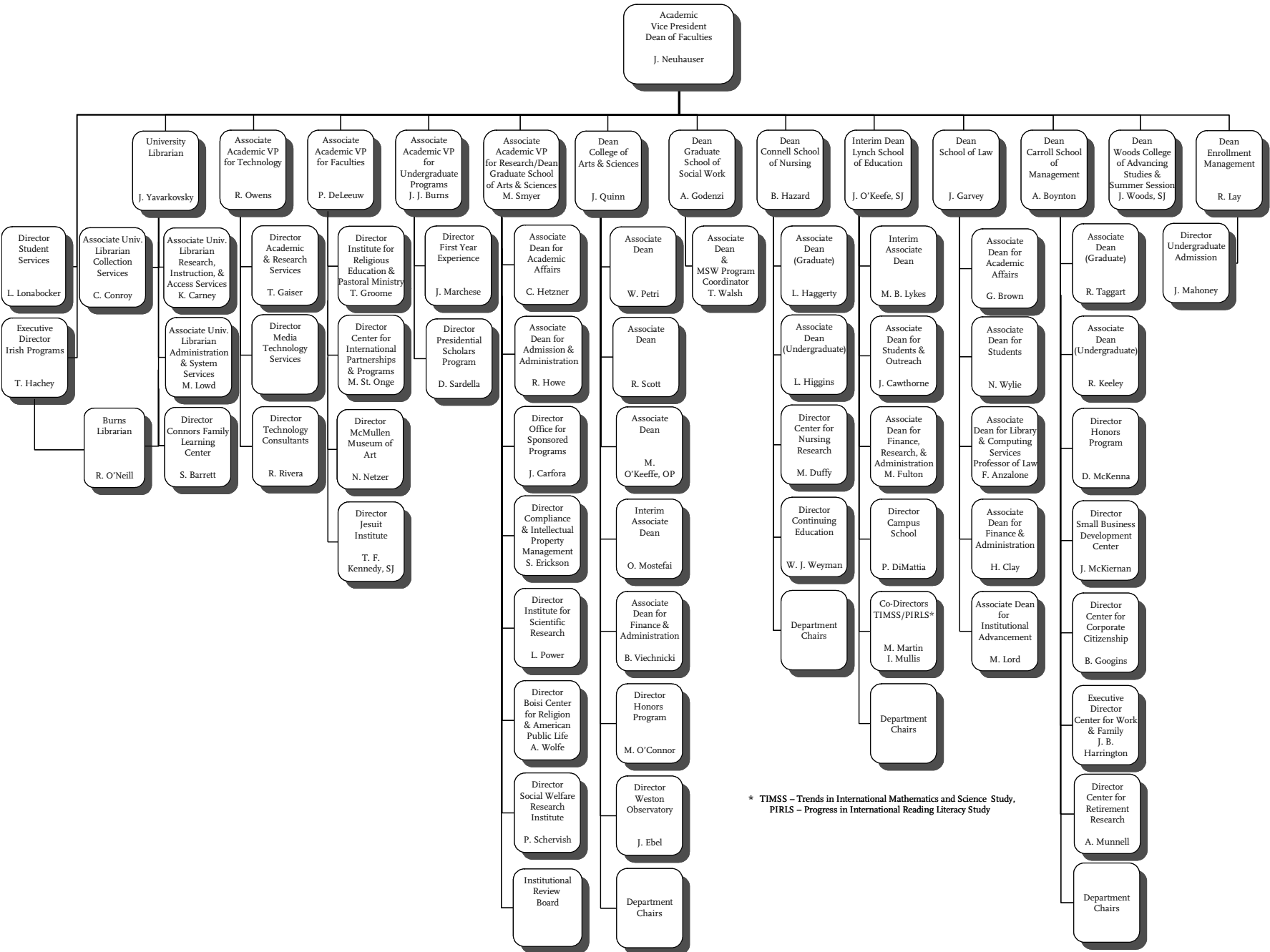
James A. Woods, S.J., Dean

University Libraries

Jerome Yavarkovsky, University Librarian

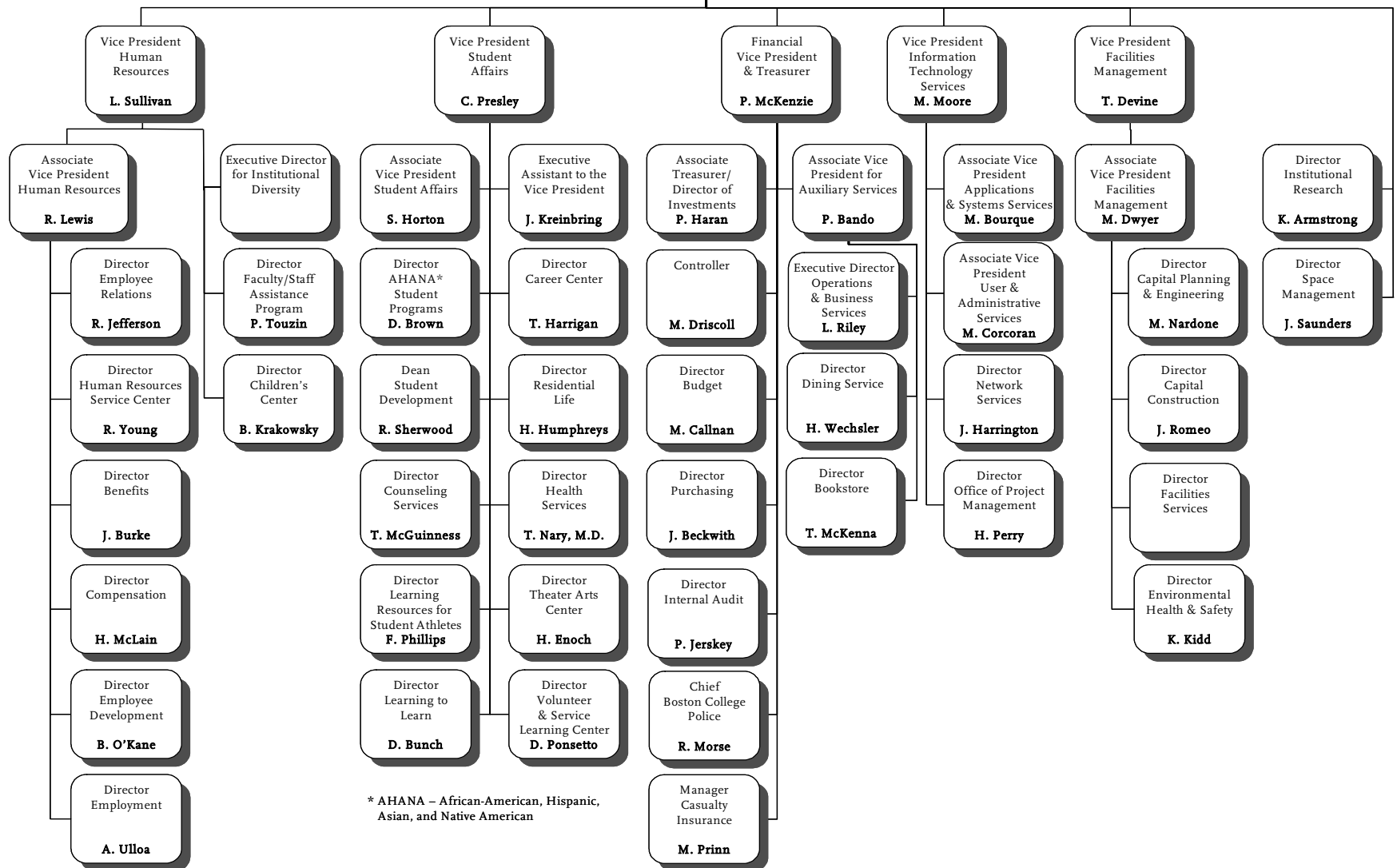
Source: Department of Human Resources





* TIMSS – Trends in International Mathematics and Science Study,
PIRLS – Progress in International Reading Literacy Study

**Executive Vice President
P. Keating**



* AHANA – African-American, Hispanic, Asian, and Native American

UNIVERSITY ADMINISTRATORS 2004-2005

Academic & Research Services

Ted Gaiser, Director

Undergraduate Admission

John L. Mahoney, Jr., Director

AHANA Student Programs

Donald Brown, Director

Alumni Association

Grace Cotter-Regan, Executive Director

Athletics

Eugene B. DeFilippo, Jr., Director

Internal Audit

Pamela Jerskey, Director

Auxiliary Services

Patricia Bando, Associate Vice President

Boisi Center for Religion and American Public Life

Alan Wolfe, Director

Bookstore

Thomas McKenna, Director

Budget

Michael T. Callnan, Director

Campus Ministry

James D. Erps, S.J., Director

Campus School

Philip A. DiMattia, Director

Capital Construction

John S. Romeo, Director

Capital Planning & Engineering

Mary S. Nardone, Director

Career Center

Theresa A. Harrigan, Director

Casualty Insurance

Michael J. Prinn, Manager

Community Affairs

William R. Mills, Director

Compliance and Intellectual Property Management

Stephen Erickson, Director

Connors Family Learning Center

Suzanne M. Barrett, Director

Continuing Education, Connell School of Nursing

W. Jean Weyman, Director

Controller

Michael J. Driscoll

Center for Corporate Citizenship

Bradley Googins, Director

University Counseling Services

Thomas P. McGuinness, Director

Development - Advancement

Communications & Marketing

Christine Sanni, Executive Director

Development - Annual Giving

Eric C. Graage, Associate Vice President

Development - Capital Giving

Thomas P. Lockerby, Associate Vice President

Development - Leadership Gifts and Regions

Marianne Lord, Associate Vice President

Development - School Relations and Corporate & Foundation Fundraising

Katherine V. Smith, Associate Vice President

Dining Service

Helen S. Wechsler, Director

Environmental Health and Safety

Keith D. Kidd, Director

First Year Experience

Joseph P. Marchese, Director

University General Counsel

Joseph Herlihy, Esq.

Health Services

Thomas I. Nary, M.D., Director

University Historian

Thomas H. O'Connor

Honors Program, Carroll School of Management

David R. McKenna, Director

Honors Program, College of Arts & Sciences

Mark F. O'Connor, Director

Human Resources

Robert J. Lewis, Associate Vice President

Human Resources - Benefits

John R. Burke, Director

Human Resources - Children's Center

Barbara A. Krakowsky, Director

Human Resources - Compensation

Halley McLain, Director

Human Resources - Employee Development

Bernard R. O'Kane, Director

Human Resources - Employee Relations

Richard P. Jefferson, Director

Human Resources - Employment

Anita Ulloa, Director

Human Resources - Faculty/Staff Assistance Program

Patricia A. Touzin, Director

Human Resources Service Center

Richard M. Young, Director

Center for Ignatian Spirituality

Julio Giulietti, S.J., Director

Information Technology - Network Services

Joseph E. Harrington, Director

Information Technology - Project Management

Henry Perry, Director

Information Technology - User & Administrative Services

Mary Corcoran, Associate Vice President

Office of Institutional Research

Kelli J. Armstrong, Director

Center for International Partnerships & Programs

Marian St. Onge, Director

Irish Programs

Thomas E. Hachey, Executive Director

Jesuit Institute

T. Frank Kennedy, S.J., Director

Learning to Learn

Dan Bunch, Director

UNIVERSITY ADMINISTRATORS 2004-2005 (Continued)

Learning Resources for Student Athletes

Ferna L. Phillips, Director

Office of Marketing Communications

Ben Birnbaum, Executive Director and Special Assistant to the President

McMullen Museum of Art

Nancy D. Netzer, Director

Boston College Neighborhood Center

Maria S. DiChiappari, Director

Center for Nursing Research

Mary E. Duffy, Director

Boston College Police

Robert A. Morse, Chief

Presidential Scholars Program

Dennis J. Sardella, Director

Public Affairs

John B. Dunn, Director

Purchasing

John D. Beckwith, Director

Institute of Religious Education and Pastoral Ministry

Thomas Groome, Director

Residential Life

Henry J. Humphreys, Director

Center for Retirement Research

Alicia H. Munnell, Director

Institute for Scientific Research

Leo F. Power, Jr., Director

Small Business Development Center

John McKiernan, Director

Social Welfare Research Institute

Paul G. Schervish, Director

Space Management

Joyce C. Saunders, Director

Office for Sponsored Programs

John N. Carfora, Director

Student Development

Robert A. Sherwood, Dean

Student Services

Louise M. Lonabocker, Director

Technology Consultants

Raymond Rivera, Director

Theater Arts Center

Howard Enoch, Director

Associate Treasurer

Paul P. Haran, Associate Treasurer and Director of Investments

Volunteer & Service Learning Center

Daniel P. Ponsetto, Director

Weston Observatory

John E. Ebel, Director

Center for Work and Family

J. Bradley Harrington, Executive Director

Source: Department of Human Resources

DEPARTMENT CHAIRPERSONS

2004-2005

Arts & Sciences

Biology Marc A. Muskavitch

Chemistry David L. Mc Fadden

Classical Studies..... Charles F. Ahern

Communication Lisa Cuklanz

Computer Science..... Robert Muller

Economics Marvin C. Kraus

English..... Mary Crane

Fine Arts..... John Michalczyk

Geology & Geophysics..... Alan L. Kafka

German Studies..... Michael Resler

History Alan Rogers

Mathematics Gerard E. Keough

Music Thomas O. Lee

Philosophy Patrick Byrne

Physics..... Kevin Bedell

Political Science..... Susan Shell

Psychology James Russell

Romance Languages & Literatures..... Franco A. Mormando

Slavic & Eastern Languages Cynthia Simmons

Sociology Stephen J. Pfohl

Theatre..... Stuart J. Hecht

Theology..... Kenneth Himes

Carroll School of Management

Accounting..... Theresa A. Hammond

Business Law Christine N. O'Brien

Computer Science Robert Muller

Finance Hassan Tehrani

Marketing..... Gerald Smith

Operations, Information & Strategic Management..... David C. Murphy

Organization Studies Judith Clair

Connell School of Nursing

Adult Health..... Rita Oliveri

Community Health..... Anne Norris

Maternal & Child Health..... Margaret H. Kearney

Psychiatric/Mental Health..... Anne Norris

Lynch School of Education

Counseling, Developmental & Educational Psychology..... Elizabeth Sparks

Educational Administration & Higher Education Irwin Blumer

Educational Research, Measurement & Evaluation..... Larry H. Ludlow

Teacher Education/Special Education, Curriculum & Instruction..... Audrey Friedman

Source: Department of Human Resources

PROFESSIONAL, ADMINISTRATIVE, AND SUPPORT STAFF PERSONNEL By Gender, Fall 2004

	Full-Time Positions				Part-Time Positions				Total Positions
	Men	Women	Open	Total	Men	Women	Open	Total	
Professional Administrative									
Dean of Faculties*	136	221	23	380	15	15	2	32	412
Student Affairs	35	61	4	100	16	18	5	39	139
Athletics	59	32	1	92	17	9	4	30	122
Information Technology	69	33	11	113	0	3	1	4	117
Financial Vice President**	63	49	8	120	0	2	0	2	122
University Relations	26	55	16	97	1	3	0	4	101
Campus Facilities	45	6	6	57	0	0	0	0	57
President***	44	19	2	65	4	3	1	8	73
Human Resources	7	25	5	37	1	1	1	3	40
Executive Vice President****	0	9	0	9	0	0	0	0	9
Total	484	510	76	1,070	54	54	14	122	1,192
Secretarial, Clerical, Technical									
Secretarial/Clerical	58	315	36	409	5	67	7	79	488
Library Assistants	24	39	3	66	0	11	1	12	78
Technical, Other	40	7	2	49	0	0	0	0	49
Total	122	361	41	524	5	78	8	91	615
Facilities, Plant Services									
Dining Services	111	61	8	180	6	18	3	27	207
Housekeeping	102	50	3	155	0	0	0	0	155
Grounds & Trades	101	1	5	107	0	0	0	0	107
Gate Attendants, Police	51	11	13	75	7	5	5	17	92
Mailroom, Switchboard	11	3	0	14	3	1	0	4	18
Total	376	126	29	531	16	24	8	48	579
Total Positions	982	997	146	2,125	75	156	30	261	2,386

*Includes academic administration, Student Services, and all library professional administrative staff.

**Includes financial and business departments, Bookstore, Boston College Police, Bureau of Conferences, and Dining Services.

***Includes Office of the President, Office of the Senior Vice President, Mission and Ministry, Boston College Neighborhood Center, Marketing Communications, Public Affairs, Governmental and Community Affairs, University General Counsel, University Historian, University Secretary, and all executives.

****Includes the Offices of Space Management and Institutional Research.

Note: The above figures represent all permanent positions funded by the University as of November 1, 2004. Restricted funded positions are not included. Positions funded partially by outside contracts or grants are counted above as part-time University Positions.

Source: Department of Human Resources

RESTRICTED FUNDED PERSONNEL By Gender and FTE, Fall 2004

	Full-Time Positions				Part-Time Positions				Total Positions	Total FTE
	Men	Women	Total	FTE	Men	Women	Total	FTE		
Faculty	1	2	3	3.0	0	2	2	1.0	5	4.0
Professional, Administrative	11	38	49	49.0	13	16	29	16.1	78	65.1
Research Associate or Assistant	51	55	106	106.0	1	2	3	1.7	109	107.7
Secretarial, Clerical, Technical	0	4	4	4.0	0	4	4	2.0	8	6.0
Total Positions	63	99	162	162.0	14	24	38	20.8	200	182.8

Note: Incremental restricted funded positions supported entirely by Contract and Grant, Endowment, or Restricted Gift funding as of November 1, 2004.

Source: Department of Human Resources

FACULTY BY SCHOOL AND RANK*

2003-2004

School	Professor		Associate		Assistant		Instructor		Total		Faculty on leave**
	No.	%	No.	%	No.	%	No.	%	No.	%	
Arts & Sciences	146	38%	136	38%	95	21%	23	3%	400	100%	28
Education	15	41%	16	31%	15	28%	0	0%	46	100%	4
Law	27	48%	15	39%	9	13%	0	0%	51	100%	3
Management	23	30%	33	37%	26	31%	11	0%	93	100%	1
Nursing	8	18%	14	56%	9	18%	11	20%	42	100%	1
Social Work	6	24%	7	47%	4	24%	1	6%	18	100%	0
Total	225	36%	221	38%	158	22%	46	3%	650	100%	37

* Includes all full-time regular faculty members.

** Includes faculty who were on unpaid leave for all of part of the 2003-04 academic year.

Source: Office of the Academic Vice President

FACULTY BY SCHOOL AND GENDER

2003-2004

School	Women		Men		Total	Women	Men
	No.	%	No.	%		%	%
Arts & Sciences	122	51%	273	68%	395	31%	69%
Education	27	11%	24	6%	51	53%	47%
Law	20	9%	31	8%	51	39%	61%
Management	25	10%	67	16%	92	27%	73%
Nursing	37	15%	2	0%	39	95%	5%
Social Work	10	4%	12	2%	22	45%	55%
Total	241	100%	409	100%	650		

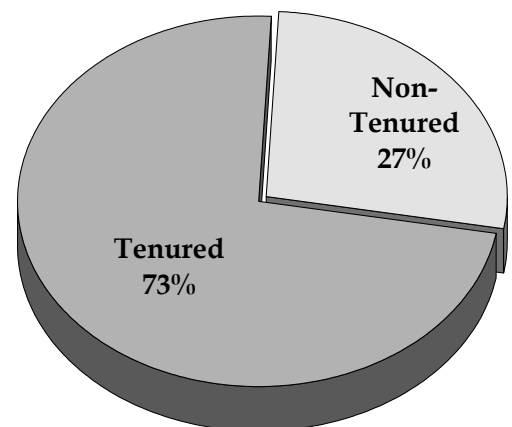
Source: Office of the Academic Vice President

FACULTY BY SCHOOL AND TENURE STATUS

2003-2004

School	Tenured Faculty		Non-Tenured Faculty		Total	
	No.	%	No.	%	No.	%
Arts & Sciences	290	73%	105	27%	395	100%
Education	38	75%	13	25%	51	100%
Law	44	86%	7	14%	51	100%
Management	64	70%	28	30%	92	100%
Nursing	24	62%	15	38%	39	100%
Social Work	15	68%	7	32%	22	100%
Total	475	73%	175	27%	650	100%

Source: Office of the Academic Vice President



FACULTY BY HIGHEST DEGREE EARNED AND RANK 2003-2004

Degree	Professor		Associate		Assistant		Instructor		Total	
	No.	%	No.	%	No.	%	No.	%	No.	%
Doctorate	214	100%	278	99%	125	96%	5	20%	622	96%
Master's	0	0%	3	1%	5	4%	20	80%	28	4%
Total	214	100%	281	100%	130	100%	25	100%	650	100%

Source: Office of the Academic Vice President

96% of Boston College
faculty members
hold a doctoral degree

FACULTY BY HIGHEST DEGREE EARNED AND GENDER 2003-2004

Degree	Women		Men		Total	
	No.	%	No.	%	No.	%
Doctorate	230	95%	392	96%	622	96%
Master's	11	5%	17	4%	28	4%
Total	241	100%	409	100%	650	100%

Source: Office of the Academic Vice President

FACULTY BY RANK AND GENDER 2003-2004

Rank	Women		Men		Total	
	No.	%	No.	%	No.	%
Professor	62	26%	167	41%	229	35%
Associate	87	36%	153	37%	240	37%
Assistant	68	28%	80	20%	148	23%
Instructor	24	10%	9	2%	33	5%
Total	241	100%	409	100%	650	100%

Source: Office of the Academic Vice President

FULL-TIME EQUIVALENT FACULTY, TEACHING FELLOWS, AND TEACHING ASSISTANTS By School, 2003-2004

School	FTE of Full-Time Faculty		FTE of Part-Time Faculty		FTE of Teaching Fellows & Assistants		Total FTE Faculty	
	No.	%	No.	%	No.	%	No.	%
Arts & Sciences	387.45	61%	107.33	62%	90.33	74%	585.11	63%
Education	46.50	7%	19.00	11%	25.50	21%	91.00	10%
Management	93.00	15%	19.33	11%	0.00	0%	112.33	12%
Nursing	41.00	6%	4.00	2%	6.75	5%	51.75	5%
Law	47.50	8%	11.33	6%	0.00	0%	58.83	6%
Social Work	20.50	3%	13.66	8%	0.00	0%	34.16	4%
Total	635.95	100%	174.65	100%	122.58	100%	933.18	100%

Source: Office of the Academic Vice President

FULL-TIME FACULTY, TEACHING FELLOWS, AND TEACHING ASSISTANTS By School and Department, 2003-2004

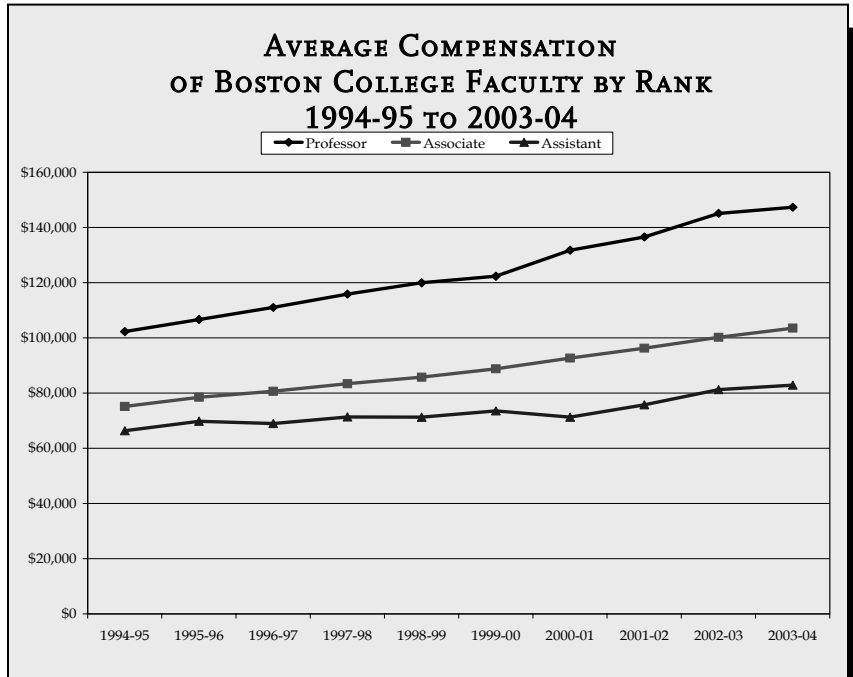
	Full-Time Faculty	Teaching Fellows	Teaching Assistants
Arts & Sciences			
Biology	20	-	36
Chemistry	20	-	41
Classics	4	-	-
Communication	17	-	-
Economics	25	7	12
English	42	24	-
Fine Arts	16	-	-
Geology	6	-	14
Germanic Studies	3	-	-
History	36	13	21
Honors Program	9	-	-
Mathematics	22	7	5
Music	4	-	-
Philosophy	30	18	-
Physics	14	-	27
Political Science	21	4	-
Psychology	19	-	7
Religion and American Public Life	2	-	-
Romance Languages	21	6	-
Slavic	4	-	2
Sociology	17	12	8
Theater	6	-	-
Theology	42	4	22
Total Arts and Sciences	400	127	195
Education	46	28	50
Law	51	-	-
Management	93	-	-
Nursing	42	15	6
Social Work	18	-	-
Total	650	170	251

Source: Office of the Academic Vice President

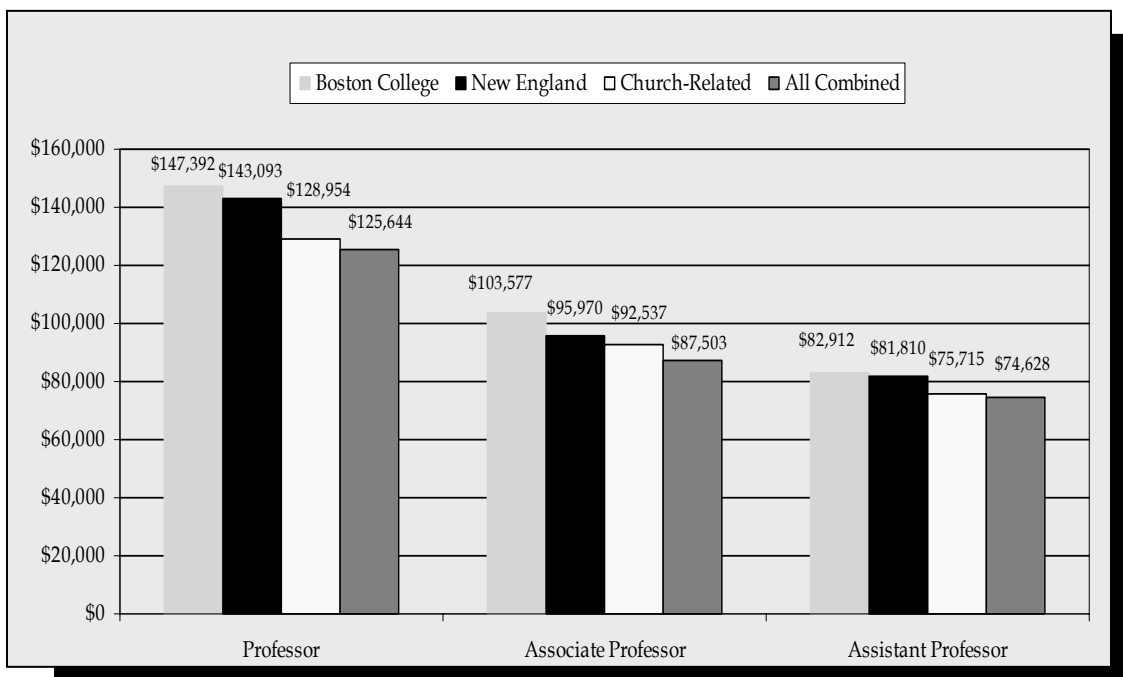
FACULTY COMPENSATION*
Average by Rank

Year	Professor	Associate	Assistant
1994-95	\$102,300	\$75,200	\$66,400
1995-96	106,700	78,500	69,800
1996-97	111,100	80,700	69,000
1997-98	115,900	83,400	71,400
1998-99	120,000	85,800	71,300
1999-00	122,387	88,815	73,542
2000-01	131,800	92,700	71,300
2001-02	136,600	96,300	75,800
2002-03	145,170	100,228	81,313
2003-04	147,392	103,577	82,912

*Includes salary and fringe benefits.
Source: Office of the Academic Vice President



FACULTY COMPENSATION BY RANK*
Boston College Average Compared to AAUP Category I (9-Month Equivalent), 2003-2004



*Includes salary and fringe benefits.
Source: Office of the Academic Vice President