

FULL-TIME FRESHMAN ENROLLMENT By Year and Gender

Fall	Men	Women	Total
1994	1,083	1,167	2,250
1995	1,003	1,137	2,140
1996	1,145	1,329	2,474
1997	1,084	1,084	2,168
1998	1,063	1,184	2,247
1999	1,103	1,181	2,284
2000	1,114	1,132	2,246
2001	940	1,163	2,103
2002	1,150	1,165	2,315
2003	1,055	1,153	2,208

Source: Office of Undergraduate Admissions

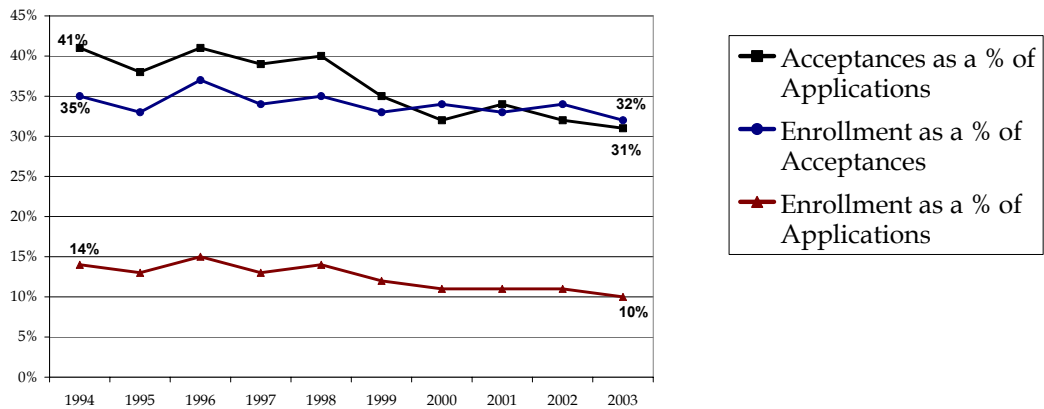
FRESHMAN ADMISSION PROFILE Middle 50% Range of SAT Scores

Class	Verbal	Math	Combined
1998	520 - 610	600 - 690	1140 - 1280
1999	520 - 620	610 - 700	1140 - 1300
2000*	580 - 670	600 - 690	1200 - 1340
2001	580 - 680	610 - 690	1210 - 1340
2002	590 - 680	610 - 690	1210 - 1350
2003	590 - 680	610 - 690	1210 - 1360
2004	600 - 690	620 - 700	1230 - 1370
2005	600 - 690	620 - 700	1240 - 1380
2006	600 - 690	620 - 710	1250 - 1390
2007	600 - 690	630 - 710	1260 - 1390

*Class of 2000 begins College Board recentered score series.

Source: Office of Undergraduate Admissions

FRESHMAN APPLICATION, ACCEPTANCES, AND ENROLLMENT By Year and Gender



Fall	Applications	Acceptances	Acceptances as a % of Applications	Total Enrollment	Enrollment as a % of Acceptances	Enrollment as a % of Applications
1994	15,522	6,378	41	2,250	35	14
1995	16,680	6,399	38	2,140	33	13
1996	16,501	6,750	41	2,474	37	15
1997	16,455	6,455	39	2,168	34	13
1998	16,373	6,484	40	2,247	35	14
1999	19,746	6,976	35	2,284	33	12
2000	20,743	6,587	32	2,246	34	11
2001	19,059	6,401	34	2,103	33	11
2002	21,133	6,850	32	2,315	34	11
2003	22,424	6,896	31	2,208	32	10

Note: Freshman enrollment reported above is based on deposits received from students accepting the offer of admission on or before the deadline set by the Committee on Admissions. Withdrawals may occur during the summer months and the first two weeks in September.

Source: Office of Undergraduate Admissions

APPLICATIONS, ACCEPTANCES, AND ENROLLMENT – CLASS OF 2007

Geographic Distribution

State	Applications	Acceptances	Enrollment	State	Applications	Acceptances	Enrollment
Alabama	48	15	3	Nevada	21	5	1
Alaska	20	6	2	New Hampshire	353	88	34
Arizona	98	39	10	New Jersey	2,275	747	238
Arkansas	16	5	2	New Mexico	28	3	1
California	2,031	554	98	New York	3,478	1,135	366
Colorado	197	49	21	North Carolina	116	39	12
Connecticut	1,379	417	157	North Dakota	1	0	0
Delaware	51	17	6	Ohio	412	125	35
District of Columbia	72	27	5	Oklahoma	33	12	3
Florida	739	253	51	Oregon	71	20	1
Georgia	155	40	11	Pennsylvania	980	253	66
Hawaii	115	45	7	Rhode Island	333	103	55
Idaho	21	8	2	South Carolina	48	12	3
Illinois	707	203	62	South Dakota	8	3	0
Indiana	103	27	8	Tennessee	73	11	3
Iowa	40	6	1	Texas	529	180	40
Kansas	67	23	7	Utah	32	11	3
Kentucky	45	14	3	Vermont	139	32	15
Louisiana	80	44	8	Virginia	338	112	25
Maine	229	51	25	Washington	228	69	13
Maryland	569	229	66	West Virginia	27	3	2
Massachusetts	4,080	1,257	569	Wisconsin	149	44	12
Michigan	245	64	17	Wyoming	2	2	1
Minnesota	279	95	33	Puerto Rico	106	40	12
Mississippi	10	2	0	Virgin Islands, Guam, Canal Zone	28	10	4
Missouri	141	46	12	Other	1,016	275	73
Montana	10	3	0	Total	22,424	6,896	2,208
Nebraska	53	23	4				

Note: Application, Acceptance and Enrollment totals are as of May 10, 2003. Class of 2007 includes students from 46 states, the District of Columbia, Puerto Rico, the Virgin Islands, and 34 foreign countries.

Source: Office of Undergraduate Admissions

TOP CROSS APPLICATION COMPETITOR SCHOOLS OF ENROLLING FRESHMEN

Class of 2006

Top 12 Colleges and Universities

Georgetown University	University of Pennsylvania	University of Notre Dame
Harvard College	Brown University	Duke University
Tufts University	Villanova University	New York University
Boston University	Cornell University	Yale University

Note: Competitor schools are determined by the number of admitted students applying to the listed colleges. They do not include competitor schools of students who were not admitted to Boston College. Source: Office of Enrollment Management Research, 2002 Admitted Student Questionnaire Plus (2,609 student responses). Cross Application Competitor Schools are determined every two years.

UNDERGRADUATE TRANSFER STUDENT APPLICATIONS, ACCEPTANCES, AND ENROLLMENT

Full-Time

Fall*	Applications	Acceptances	Acceptances as a % of Applications	Total Enrollment	Enrollment as a % of Acceptances	Enrollment as a % of Applications
1994	1,704	507	30	222	44	13
1995	1,740	422	24	216	51	12
1996	1,526	252	17	113	45	7
1997	1,338	495	37	247	50	19
1998	1,339	496	35	225	48	17
1999	1,525	447	29	248	55	16
2000	1,363	256	19	142	56	10
2001	1,015	258	25	132	51	13
2002	1,079	130	12	71	55	7
2003	1,123	260	23	124	48	11

* Transfer enrollment typically increases 75-125 students second semester.

Source: Office of Undergraduate Admissions

UNDERGRADUATE TRANSFER STUDENT ENROLLMENT

By Type of Previous Institution and Gender

Fall*	2-Year Public	2-year Private	4-Year Public	4-Year Private	Total	Men	Women	Total
1994	44	8	50	120	222	88	134	222
1995	31	6	58	121	216	91	125	216
1996	11	1	43	58	113	42	71	113
1997	22	5	66	154	247	112	135	247
1998	17	8	62	138	225	100	125	225
1999	24	4	59	161	248	95	153	248
2000	10	-	61	71	142	63	79	142
2001	9	2	45	76	132	59	73	132
2002	3	1	24	43	71	32	39	71
2003	13	0	34	77	124	55	69	124

* Transfer enrollment typically increases 75-125 students second semester.

Source: Office of Undergraduate Admissions

ENROLLMENT, FALL 2003

By School, Gender, and Full- and Part-Time

School	Full-Time			Part-Time			Total		
	Men	Women	Total	Men	Women	Total	Men	Women	Total
Undergraduate Enrollment									
School of Arts & Sciences	2,805	2,962	5,767	0	0	0	2,805	2,962	5,767
Carroll School of Management	1,270	778	2,048	0	0	0	1,270	778	2,048
Lynch School of Education	137	630	767	0	0	0	137	630	767
Connell School of Nursing	9	260	269	0	0	0	9	260	269
Total Undergraduate Day Students	4,221	4,630	8,851	0	0	0	4,221	4,630	8,851
College of Advancing Studies	158	124	282	235	251	486	393	375	768
Graduate & Professional Enrollment									
Graduate Arts & Sciences	158	160	318	368	351	719	526	511	1,037
Graduate Education	100	319	419	179	463	642	279	782	1,061
Law School	379	432	811	1	0	1	380	432	812
Graduate Management	195	154	349	442	187	629	637	341	978
Graduate Nursing	8	117	125	3	66	69	11	183	194
Graduate Social Work	52	311	363	33	123	156	85	434	519
Graduate Advancing Studies	5	7	12	67	80	147	72	87	159
Total Graduate & Professional	897	1,500	2,397	1,093	1,270	2,363	1,990	2,770	4,760
Total University Enrollment	5,276	6,254	11,530	1,328	1,521	2,849	6,604	7,775	14,379

Note: Undergraduate enrollment includes 270 students on Boston College International Exchange programs who are not on the Boston College campus. Excluding those studying abroad, the total number of undergraduates attending Boston College in the Fall 2003 semester is 8,581.

STUDENT CREDIT HOURS

By School

	1998-99	1999-00	2000-01	2001-02	2002-03
Undergraduate					
Arts & Sciences	166,929	173,869	171,305	173,114	175,346
Management	67,449	66,569	64,572	63,241	61,099
Education	24,557	24,982	23,885	23,654	23,466
Nursing	7,146	6,928	6,316	6,751	6,454
College of Advancing Studies	14,514	13,970	13,725	13,543	13,347
Total Undergraduate	280,595	286,318	279,803	280,303	279,712
Graduate & Professional					
Graduate Arts and Sciences	9,117	9,072	8,913	9,118	9,202
Graduate Education	14,024	14,360	12,957	11,630	13,154
Graduate Management	13,747	13,311	14,334	14,405	14,730
Graduate Nursing	2,313	2,828	2,787	2,674	3,023
Graduate Social Work	15,203	14,409	13,178	12,590	12,598
Law School	23,502	23,609	23,016	23,489	23,416
Graduate Advancing Studies	2,285	2,071	1,707	1,582	1,766
Total Graduate & Professional	80,191	79,660	76,892	75,488	77,889
Total	360,786	365,978	356,695	355,791	357,601

Source: Office of Student Services

UNDERGRADUATE, GRADUATE & PROFESSIONAL ENROLLMENT, FALL 1999 TO FALL 2003 By School, Gender, and Full- and Part-Time

	Undergraduate Day Schools					Adv.St.	Graduate & Professional							Univ. Total	
	A&S	Mgt.	Ed.	Nurs.	Total		GA&S	GEd.	GNurs.	GMgt.	GSSW	Law	Adv.St.		Total
Fall 1999															
Full-Time	5,853	2,271	828	236	9,189	241	322	469	95	219	346	829	13	2,293	11,722
Part-Time	-	-	-	2	2	595	678	587	66	708	138	-	193	2,370	2,967
Men	2,823	1,386	123	7	4,339	411	525	264	9	622	71	404	77	1,972	6,722
Women	3,030	885	705	231	4,851	425	475	792	152	305	413	425	129	2,691	7,967
Total	5,853	2,271	828	238	9,190	836	1,000	1,056	161	927	484	829	206	4,663	14,689
Fall 2000															
Full-Time	5,741	2,187	785	216	8,929	262	295	417	86	244	307	805	9	2,163	11,354
Part-Time	-	-	-	1	1	606	732	611	79	712	160	-	164	2,458	3,065
Men	2,766	1,394	107	5	4,272	461	526	244	7	635	66	392	76	1,946	6,679
Women	2,975	793	678	212	4,658	407	501	784	158	321	401	413	97	2,675	7,740
Total	5,741	2,187	785	217	8,930	868	1,027	1,028	165	956	467	805	173	4,621	14,419
Fall 2001															
Full-Time	5,850	2,148	772	230	9,000	260	326	325	83	281	300	813	4	2,132	11,392
Part-Time	-	-	-	-	-	537	689	618	68	692	143	1	167	2,378	2,915
Men	2,783	1,343	129	5	4,260	406	518	220	6	653	67	382	78	1,924	6,590
Women	3,067	805	643	225	4,740	391	497	723	145	320	376	432	93	2,586	7,717
Total	5,850	2,148	772	230	9,000	797	1,015	943	151	973	443	814	171	4,510	14,307
Fall 2002															
Full-Time	5,895	2,045	756	220	8,916	248	324	372	98	273	297	806	10	2,180	11,344
Part-Time	-	-	-	-	-	526	712	634	72	700	148	-	161	2,427	2,953
Men	2,889	1,264	126	6	4,285	401	519	235	5	643	64	367	72	1,905	6,591
Women	3,006	781	630	214	4,631	373	517	771	465	330	381	439	99	2,702	7,706
Total	5,895	2,045	756	220	8,916	774	1,036	1,006	170	973	445	806	171	4,607	14,297
Fall 2003															
Full-Time	5,767	2,048	767	269	8,851	282	318	419	125	349	363	811	12	2,397	11,530
Part-Time	-	-	-	-	-	486	719	642	69	629	156	1	147	2,363	2,849
Men	2,805	1,270	137	9	4,221	393	526	279	11	637	85	380	72	1,990	6,604
Women	2,962	778	630	260	4,630	375	511	782	183	341	434	432	87	2,770	7,775
Total	5,767	2,048	767	269	8,851	768	1,037	1,061	194	978	519	812	159	4,760	14,379

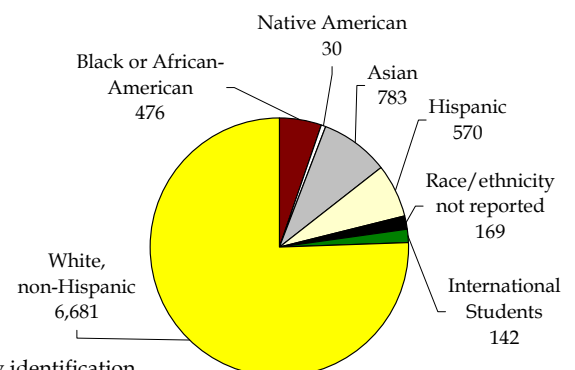
Source: Student Services

AHANA & INTERNATIONAL ENROLLMENT, FALL 2003 Undergraduate Day Schools

	Men	Women	Total	*Percent
Black or African-American	229	247	476	5.48%
Native American	12	18	30	0.35%
Asian	356	427	783	9.02%
Hispanic	227	343	570	6.57%
AHANA Undergraduate	824	1,035	1,859	21.41%
International Students**	75	67	142	1.60%
AHANA & International Students	899	1,102	2,001	23.02%

*Note that AHANA percentages are percentages among students who report their race/ethnicity identification.

In Fall 2003, 169 students (79 men, 90 women) did not report race or ethnicity. **International students include nonresident aliens of all racial and ethnic groups including Caucasian. Source: Office of Student Services



FULL-TIME EQUIVALENT ENROLLMENT*

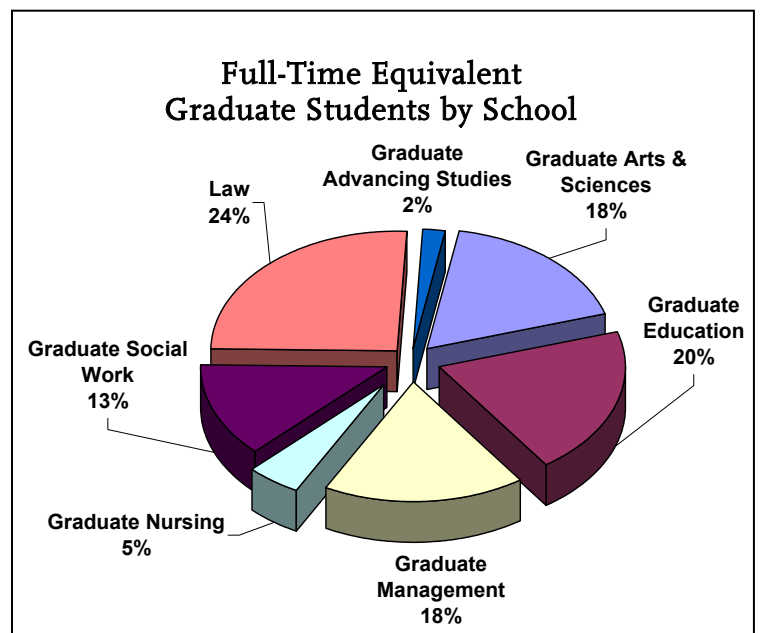
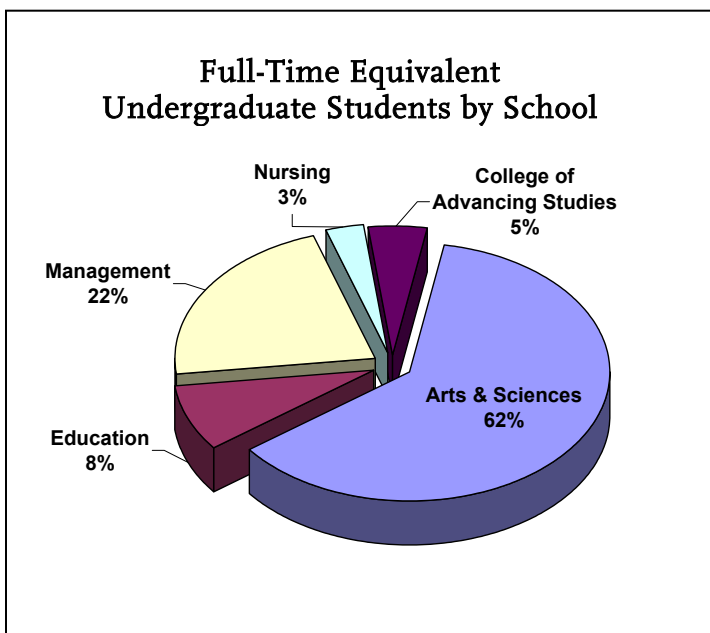
By School, Fall 1994 through Fall 2003

	1994	1995	1996	1997	1998	1999	2000	2001	2002	2003
Undergraduate Students										
Arts & Sciences	5,699	5,561	5,541	5,589	5,577	5,853	5,741	5,850	5,895	5,767
Education	701	698	772	806	810	828	785	772	756	767
Management	2,270	2,269	2,339	2,276	2,288	2,271	2,187	2,148	2,045	2,048
Nursing	408	367	305	250	247	237	216	230	220	269
Total Day Students	9,078	8,895	8,957	8,921	8,922	9,189	8,929	9,000	8,916	8,851
College of Advancing Studies**	682	633	624	531	485	439	464	440	423	444
Total Undergraduate	9,760	9,528	9,581	9,452	9,407	9,628	9,393	9,440	9,339	9,295
Graduate & Professional										
Graduate Arts & Sciences	599	609	605	592	601	548	539	553	561	558
Graduate Education	494	600	601	600	655	665	621	532	583	633
Graduate Management	408	459	455	464	486	455	481	511	506	559
Graduate Nursing	102	90	68	87	99	117	112	106	122	148
Graduate Social Work	398	456	478	463	412	392	360	348	346	415
Law	830	819	803	826	825	829	805	813	806	811
Graduate Advancing Studies	-	-	49	68	81	77	64	60	64	61
Total Graduate & Professional	2,831	3,033	3,059	3,100	3,159	3,083	2,982	2,923	2,988	3,185
Total University	12,591	12,561	12,640	12,552	12,566	12,711	12,375	12,363	12,327	12,480

* Method of computation: three part-time students equal one full-time equivalent student.

** In 1996, the Evening College became the College of Advancing Studies and began to offer graduate programs.

Source: Student Services



GRADUATE ENROLLMENT***By Degree Program and Discipline, Full- and Part-Time**

	1998-99		1999-00		2000-01		2001-02		2002-03	
	Master's	Ph.D.	Master's	Ph.D.	Master's	Ph.D.	Master's	Ph.D.	Master's	Ph.D.
Advancing Studies	261	0	259	0	221	0	205	0	215	0
American Studies	0	0	0	0	0	0	0	0	0	0
Biology	14	26	11	26	22	23	14	22	15	27
Chemistry	1	99	1	97	0	92	1	95	1	99
Economics	0	69	4	65	11	58	15	49	1	68
Education	630	276	663	283	590	307	524	310	643	318
Education/Non Degree	194	0	173	0	217	0	256	0	242	0
English	84	29	69	28	68	28	86	29	85	33
Geology	23	0	21	0	18	0	21	0	17	0
Geology-Geophysics	0	0	0	0	0	0	0	0	0	0
Geophysics	9	0	8	0	11	0	9	0	9	0
History	34	72	29	68	38	60	32	62	26	56
Interdisciplinary	2	1	2	2	1	0	1	0	1	0
Latin & Greek	9	0	6	0	6	0	7	0	8	0
Law	835	0	844	0	808	0	823	0	823	0
Linguistics	4	0	5	0	6	0	5	0	5	0
Management	1044	44	1031	45	1060	45	1065	52	1045	52
Mathematics	12	0	12	0	12	0	14	0	12	0
Nursing	127	43	146	43	143	40	130	40	150	43
Philosophy	64	58	67	62	57	52	61	48	68	48
Physics	0	28	0	26	1	22	3	26	1	35
Political Science	30	41	29	28	22	36	20	39	27	35
Psychology	2	18	2	16	2	18	1	18	4	24
Romance Languages	50	30	39	29	47	30	32	35	32	34
Religious Education	183	15	154	16	183	19	164	20	160	21
Russian	4	0	7	0	3	0	3	0	2	0
Slavic	1	0	0	0	1	0	0	0	0	0
Social Work	477	46	447	44	432	47	407	45	411	44
Sociology	24	67	15	60	16	53	12	48	17	41
Theology	20	88	23	86	32	89	30	91	34	93
Total	4,138	1,050	4,067	1,024	4,028	1,019	3,941	1,029	4,054	1,071

Source: Office of Student Services

SUMMER SESSION ENROLLMENT

Summer	1994	1995	1996	1997	1998	1999	2000	2001	2002	2003
Undergraduate	2,252	2,265	2,007	1,879	1,960	1,969	1,929	1,878	1,881	1,706
Graduate/Professional*	1,856	1,694	1,702	1,886	1,843	1,855	2,031	1,751	1,725	2,037
Total	4,108	3,959	3,709	3,765	3,803	3,824	3,960	3,629	3,606	3,743

Includes students registered through the Institute of Religious Education and the Carroll Graduate School of Management.

Source: Office of Student Services

GEOGRAPHIC DISTRIBUTION OF UNDERGRADUATE STUDENTS

By State

State	1980	1990	2000	2002	2003	State	1980	1990	2000	2002	2003
Alabama	1	11	10	11	12	Nevada	0	7	3	4	4
Alaska	0	0	4	2	3	New Hampshire	130	172	184	162	166
Arizona	2	18	29	37	39	New Jersey	734	672	941	938	955
Arkansas	2	7	4	1	3	New Mexico	4	2	12	8	7
California	49	184	380	403	419	New York	1,118	1,039	1,372	1,425	1,432
Colorado	6	45	57	65	69	North Carolina	1	22	26	31	36
Connecticut	952	728	765	752	699	North Dakota	0	2	1	2	2
Delaware	20	23	22	20	18	Ohio	74	132	125	144	145
Washington, D.C.	20	28	29	25	24	Oklahoma	1	15	13	14	12
Florida	65	232	303	276	234	Oregon	3	8	20	27	18
Georgia	5	35	53	52	53	Pennsylvania	219	308	309	294	291
Hawaii	3	36	34	28	21	Rhode Island	282	260	184	183	191
Idaho	1	3	4	6	6	South Carolina	3	11	5	4	8
Illinois	133	150	248	226	228	South Dakota	0	1	1	1	1
Indiana	9	25	29	27	28	Tennessee	1	16	15	13	15
Iowa	1	8	17	17	14	Texas	11	122	131	134	146
Kansas	4	14	28	25	25	Utah	1	4	4	8	13
Kentucky	6	11	15	16	16	Vermont	27	47	52	49	50
Louisiana	4	38	22	24	25	Virginia	41	68	76	82	88
Maine	104	128	108	111	102	Washington	8	20	63	52	49
Maryland	109	184	255	243	231	West Virginia	3	9	2	3	5
Massachusetts	4,269	3,135	2,401	2,435	2,435	Wisconsin	25	53	50	55	54
Michigan	55	82	71	76	72	Wyoming	1	2	1	1	2
Minnesota	27	77	110	128	117	Guam	0	0	4	1	0
Mississippi	0	4	2	3	3	Puerto Rico	n/a	70	47	42	41
Missouri	17	49	54	61	53	Virgin Islands	n/a	6	1	3	4
Montana	1	6	4	10	11	International	172	227	208	139	142
Nebraska	5	30	22	17	14	Total	8,729	8,586	8,930	8,916	8,851

Source: Student Services

UNDERGRADUATE MAJORS by School

	1994	1995	1996	1997	1998	1999	2000	2001	2002	2003
Arts & Sciences										
Art History	43	38	37	38	36	34	32	45	42	41
Biochemistry	108	111	115	117	97	84	83	82	95	494
Biology	671	752	734	665	543	539	481	443	465	118
Chemistry	90	100	89	84	90	94	84	89	102	98
Classics	20	20	20	24	19	15	11	21	17	26
Communication	533	522	499	542	624	734	865	945	963	925
Computer Science	82	97	118	133	181	202	200	189	139	108
Economics	345	356	364	404	430	402	382	374	398	417
English	925	927	935	931	868	906	863	845	770	758
Film Studies	-	-	-	-	-	-	10	32	46	45
French	54	50	43	39	45	50	56	47	49	46
Geology/Geophysics	87	82	80	736	66	58	52	42	30	29
German	13	9	6	148	8	11	10	3	7	12
History	398	411	379	392	410	431	451	465	530	560
Independent	12	4	2	1	3	2	5	3	1	-
International Studies	-	-	40	67	64	56	45	31	32	35
Italian	5	4	5	7	6	4	5	3	5	2
Mathematics	178	176	190	168	123	148	135	134	194	200
Music	26	21	19	23	26	23	22	29	32	31
Philosophy	182	198	178	158	166	193	211	230	261	252
Physics	29	28	33	18	29	33	36	34	46	50
Romance Languages-Total	124	130	119	120	116	114	110	96	111	
Political Science	781	747	700	671	618	649	626	646	669	693
Psychology	715	743	736	694	703	764	684	660	617	492
Slavic & Eastern Languages	18	18	12	8	11	11	7	5	12	15
Sociology	255	245	233	239	238	249	219	219	247	232
Spanish/Hispanic Studies	65	76	71	74	65	60	49	46	57	67
Studio Art	29	41	48	34	41	44	42	40	41	42
Theater Arts	40	43	66	87	84	106	101	91	91	107
Theology	29	36	47	54	70	80	88	92	137	130
Education										
American Heritage	3	2	4	2	2	1	2	2	4	8
Child/Society	75	86	99	88	67	65	49	40	31	30
Early Childhood	81	72	57	50	53	68	57	52	43	42
Elementary Education	200	196	231	222	217	224	256	279	297	294
General Science	4	3	5	2	4	6	4	2	3	5
Hispanic Experience	9	7	9	8	7	5	7	14	9	7
Human Development	180	191	231	258	289	290	277	285	276	295
Intensive Special Needs	16	22	29	28	41	27	21	15	4	-
Math/Computer Science	16	19	29	33	34	33	29	23	26	40
Moderate Special Need	108	106	116	132	122	125	85	24	7	-
Secondary Education	118	104	143	152	146	160	123	143	148	155
Management										
Accounting	459	426	383	353	336	298	245	246	279	287
Accounting/Info Tech	-	-	-	-	-	-	-	4	7	9
Computer Science	41	38	56	61	63	62	63	73	52	28
Corp. Reporting & Analysis	-	-	-	-	-	-	-	-	-	32
Economics	134	156	143	149	148	139	128	136	127	140
Economics/Op. Res.	6	3	-	-	-	-	-	-	-	-
Finance	645	702	747	743	783	797	732	665	679	717
General Management	265	268	258	250	232	259	215	189	159	136
Human Resource Mgt.	50	59	67	59	62	54	30	45	39	37
Information Systems	74	50	82	94	136	159	181	176	128	85
Marketing	422	430	487	463	498	444	427	429	395	397
Strategic Management*	54	55	67	79	87	79	86	65	65	48
Nursing										
	410	368	306	250	250	238	217	230	220	269

Note: This table includes each declared major. Students with double or triple majors are therefore counted two and three times; College of Advancing Studies students are not included in this table.

Source: Office of Student Services

INTERNATIONAL STUDENTS & SCHOLARS By School, 2003-2004*

Arts & Sciences	61
Education	5
Management	82
Nursing	
College of Advancing Studies	10
Exchange Students - Undergraduate	70
Total Undergraduate	228
Graduate Arts & Sciences	204
Graduate Education	79
Graduate Management	140
Graduate Nursing	6
Graduate Social Work	9
Law	16
Graduate Advancing Studies	4
Graduate Exchange Students	6
Graduate Visiting Students	40
Total Graduate/Professional	504
Total Enrolled Students	732
Practical Training**	113
Faculty and Research Scholars	118
Total	963

* These figures do not include students, faculty and scholars who will arrive in the spring 2004 which would add approximately 75 to the total international population for 2003-2004.

** Students who have graduated from Boston College and who are undertaking a period of practical training in the United States.

Source: Office of the Dean for Student Development

INTERNATIONAL STUDENTS & SCHOLARS By Class or Program, 2003-2004*

Freshmen	53
Sophomores	21
Juniors	43
Seniors	34
Undergraduate Exchange Students	70
Visiting Students	7
Total Undergraduate	228
Graduate/Professional	
M.A.	49
M.A.T.	1
M.B.A.	36
M.Ed.	17
M.S.	89
M.S.W.	9
C.A.E.S.	1
Ph.D.	240
J.D.	16
Graduate Exchange Students	6
Graduate Visiting Students	40
Total Graduate/Professional	504
Practical Training**	113
Faculty and Research Scholars	118
Total	963

* These figures do not include students, faculty and scholars who will arrive in the spring 2004 which would add approximately 75 to the total international population for 2003-2004.

** Students who have graduated from Boston College and who are undertaking a period of practical training in the United States.

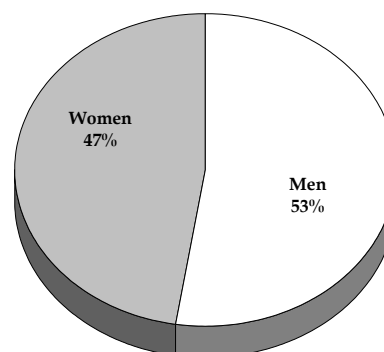
Source: Office of the Dean for Student Development

INTERNATIONAL STUDENTS & SCHOLARS By Gender and Program, 2003 - 2004

	Men	Women	Total
Undergraduate	121	107	228
Graduate	243	261	504
Practical Training*	69	44	113
Faculty and Research Scholars	73	45	118
Total	506	457	963

* Students who have graduated from Boston College and who are undertaking a period of practical training in the United States.

Source: Office of the Dean for Student Development



INTERNATIONAL STUDENTS BY COUNTRY

Undergraduate and Graduate, 2003-2004

	Under-graduate	Graduate/ Professional	Total		Under-graduate	Graduate/ Professional	Total
Algeria	-	1	1	Korea South	30	24	54
Argentina	1	4	5	Kuwait	-	3	3
Armenia	-	3	3	Laos	-	1	1
Australia	8	8	16	Latvia	-	1	1
Azerbaijan	1	-	1	Lebanon	-	2	2
Bahamas	1	-	1	Liberia	1	-	1
Bangladesh	-	1	1	Malawi	-	1	1
Belarus	-	1	1	Malaysia	1	-	1
Bermuda	-	1	1	Mexico	-	5	5
Bolivia	1	-	1	Moldova	-	1	1
Brazil	7	4	11	Mongolia	-	1	1
Bulgaria	2	9	11	Morocco	-	2	2
Canada	16	42	58	Nepal	-	5	5
Cayman Islands	1	-	1	Netherlands	11	1	12
Chile	2	5	7	Nigeria	-	3	3
China	3	128	131	Norway	2	-	2
Colombia	1	4	5	Pakistan	1	-	1
Costa Rica	-	1	1	Panama	2	1	3
Czech Republic	-	3	3	Paraguay	1	-	1
Denmark	7	-	7	Peru	-	5	5
Dominican Republic	3	1	4	Philippines	3	5	8
Ecuador	2	1	3	Romania	-	2	2
Egypt	1	3	4	Russia	2	7	9
El Salvador	1	1	2	Rwanda	-	1	1
Estonia	-	1	1	Saudi Arabia	2	1	3
Ethiopia	-	1	1	Singapore	6	2	8
Finland	1	-	1	Slovakia	-	1	1
France	17	8	25	Slovenia	-	1	1
Gaza Strip	-	1	1	South Africa	1	2	3
Germany	9	1	10	Spain	8	5	13
Ghana	-	1	1	Sweden	2	1	3
Greece	3	1	4	Switzerland	-	1	1
Guatemala	2	-	2	Taiwan	3	18	21
Haiti	2	-	2	Tanzania	-	1	1
Hong Kong	5	-	5	Thailand	-	7	7
Hungary	1	-	1	Trinidad & Tobago	1	-	1
Iceland	1	1	2	Tunisia	-	1	1
India	8	28	36	Turkey	1	19	20
Indonesia	2	3	5	Uganda	1	7	8
Ireland	5	12	17	Ukraine	1	3	4
Israel	2	7	9	United Kingdom	12	12	24
Italy	3	14	17	Uzbekistan	-	1	1
Jamaica	2	3	5	Venezuela	6	3	9
Japan	6	21	27	Vietnam	1	4	5
Jordan	1	5	6	West Bank	-	5	5
Kazakhstan	-	1	1	Yugoslavia	-	1	1
Kenya	1	5	6	Zimbabwe	-	2	2
				Total	228	504	732
				Countries Represented			94

Source: Office of the Dean for Student Development

UNDERGRADUATE AND GRADUATE DEGREES CONFERRED*

By Degree and Gender

	1998-99			1999-00			2000-01			2001-02			2002-03		
	Men	Women	Total	Men	Women	Total	Men	Women	Total	Men	Women	Total	Men	Women	Total
Undergraduate															
Arts & Sciences															
A.B.	487	527	1,014	583	626	1,209	594	652	1,246	538	690	1,228	637	701	1,338
B.S.	73	105	178	96	75	171	80	80	160	76	81	157	82	52	134
Total Arts & Sciences	560	632	1,192	679	701	1,380	674	732	1,406	614	771	1,385	719	753	1,472
Education - A.B.															
Management - B.S.	28	168	196	26	196	222	20	184	204	27	171	198	27	157	184
Nursing - B.S.	352	232	584	381	276	657	376	206	582	352	215	567	325	201	526
	3	59	62	2	58	60	1	46	47	2	62	64	1	42	43
Subtotal Undergraduate															
Day Degrees Conferred	943	1,091	2,034	1,088	1,231	2,319	1,071	1,168	2,239	995	1,219	2,214	1,072	1,153	2,225
Advancing Studies - A.B.															
	39	71	110	43	54	97	47	50	97	56	41	97	42	46	88
Total Undergraduate															
Degrees Conferred	982	1,162	2,144	1,131	1,285	2,416	1,118	1,218	2,336	1,051	1,260	2,311	1,114	1,199	2,313
Graduate															
Ph.D	51	65	116	53	63	116	40	69	109	55	65	120	54	77	131
D.Ed	-	-	-	-	-	-	-	-	-	-	-	-	5	7	12
M.A.	80	183	263	65	173	238	98	196	294	94	168	262	81	169	250
M.S.	107	96	203	108	115	223	93	112	205	97	85	182	109	122	231
M.Ed.	43	149	192	39	191	230	51	178	229	21	173	194	34	167	201
M.A.T.	-	5	5	2	1	3	1	4	5	1	3	4	2	3	5
M.S.W.	16	184	200	27	156	183	27	143	170	20	132	152	15	136	151
M.S.T.	-	5	5	3	2	5	1	1	2	-	3	3	-	-	-
M.B.A.	105	58	163	178	90	268	155	99	254	193	97	290	160	90	250
C.A.E.S.	1	6	7	2	10	12	3	9	12	-	13	13	1	4	5
Total Graduate															
Degrees Conferred	403	751	1,154	477	801	1,278	469	811	1,280	481	739	1,220	461	775	1,236
Professional															
J.D.	136	129	265	127	173	300	130	132	262	150	118	268	115	158	273
Total Graduate and Professional															
Degrees Conferred	539	880	1,419	604	974	1,578	599	943	1,542	631	857	1,488	576	933	1,509
Total Degrees															
Conferred	1,521	2,042	3,563	1,735	2,259	3,994	1,717	2,161	3,878	1,682	2,117	3,799	1,690	2,132	3,822

*August, December, and May graduations combined.

Source: Office of Student Services

UNDERGRADUATE DEGREES CONFERRED***By Degree and Number of Majors**

	1998-99	1999-00	2000-01	2001-02	2002-03
Arts & Sciences					
A.B.					
Single Major	832	971	1061	1032	1117
Double Major	179	237	184	192	220
Triple Major	-	1	1	4	1
Total A.B. Degrees	1,011	1,209	1,246	1,228	1,338
B.S.					
Single Major	167	149	149	142	125
Double Major	11	22	11	15	9
Triple Major	-	-	-	-	-
Total B.S. Degrees	178	171	160	157	134
Total Arts & Sciences	1,189	1,380	1,406	1,385	1,472
School of Education - A.B.					
Single Major	56	39	55	41	40
Double Major	140	181	149	157	144
Triple Major	-	2	-	-	-
Total Lynch School of Education	196	222	204	198	184
School of Management - B.S.					
Single Major	358	430	374	346	312
Double Major	219	220	201	221	205
Triple Major	7	7	7	-	9
Total Carroll School of Management	584	657	582	567	526
School of Nursing					
Single Major	62	60	47	63	42
Double Major	-	-	-	1	1
Triple Major	-	-	-	-	-
Total Connell School of Nursing	62	60	47	64	43
Subtotal-Undergraduate Day Degrees Conferred	2,031	2,319	2,239	2,214	2,225
Advancing Studies - A.B.					
Single Major	110	97	97	97	86
Double Major	-	-	-	-	2
Triple Major	-	-	-	-	-
Total College of Advancing Studies	110	97	97	97	88
Total Undergraduate Degrees Conferred	2,141	2,416	2,336	2,311	2,313

*August, December, and May graduations combined.
Source: Office of Student Services

UNDERGRADUATE DEGREES CONFERRED

By Major*

	1998-99	1999-00	2000-01	2001-02	2002-03
Accounting	149	103	77	66	89
Accounting/Informational Technology	-	-	-	-	1
Art History	15	14	7	10	14
Biochemistry	36	25	15	21	15
Biology	119	96	109	88	81
Chemistry	17	24	18	18	23
Child in Society	2	4	4	5	-
Classics	3	4	1	4	3
Communication	141	180	215	227	240
Computer Science	32	60	54	58	57
Early Childhood Education	21	12	11	13	12
Economics	109	170	133	147	143
Elementary Education	43	49	47	64	58
Elementary Education & Moderate Special Needs	30	42	30	7	7
English	209	203	215	211	232
Environmental Geosciences	16	9	10	19	8
Film Studies	-	-	1	7	4
Finance	212	259	257	208	206
French	10	11	8	11	7
Geology	7	6	-	-	-
Geophysics	-	2	2	2	-
Geology/Geophysics	1	3	1	1	-
German	2	5	3	-	3
Hispanic Studies	11	13	8	6	8
History	109	115	119	125	145
Human Development	32	66	85	79	75
Independent	1	3	2	1	1
Information Systems	5	22	27	43	32
International Studies	5	23	28	14	12
Italian	2	-	1	-	2
Linguistics	2	1	1	1	1
Management	18	25	17	18	21
Marketing	116	167	147	160	124
Mathematics	38	27	25	22	32
Mathematics/Computer Science	-	1	-	3	-
Music	1	6	4	5	4
Nursing	130	60	47	64	43
Operations & Technology Management	5	15	19	14	16
Organizational Studies/Human Resource Management	20	20	9	12	6
Philosophy	33	40	42	35	62
Physics	5	6	5	7	6
Political Science	145	123	134	130	121
Psychology	156	151	146	155	151
Russian	1	1	1	1	-
Secondary Education	26	40	22	24	29
Severe Special Needs	2	8	5	3	3
Slavic Studies	1	1	-	-	-
Sociology	73	64	89	53	87
Studio Art	5	6	11	9	6
Theatre	7	17	16	21	14
Theology	9	17	11	22	21
TOTAL**	2,132	2,319	2,239	2,214	2,225

*Double and triple majors counted by first major. Woods College of Advancing Studies majors are not included in this total.

Source: Office of Student Services

UNDERGRADUATE DEGREES CONFERRED

By School and Major*

	2000-2001							2001-02							2002-03						
	A&S		Ed	Mgt	Nurs	Total		A&S		Ed	Mgt	Nurs	Total		A&S		Ed	Mgt	Nurs	Total	
	AB	BS	AB	BS	BS			AB	BS	AB	BS	BS			AB	BS	AB	BS	BS		
Accounting	-	-	-	77	-	77	-	-	-	66	-	66	-	-	-	-	89	-	89		
Accounting/Information Tech	0	-	-	-	-	0	-	-	-	-	-	-	-	-	-	-	1	-	1		
Art History	7	-	-	-	-	7	10	-	-	-	-	10	14	-	-	-	-	-	14		
Biochemistry	-	15	-	-	-	15	-	21	-	-	-	21	-	15	-	-	-	-	15		
Biology	-	109	-	-	-	109	-	88	-	-	-	88	1	80	-	-	-	-	81		
Chemistry	-	18	-	-	-	18	-	18	-	-	-	18	-	23	-	-	-	-	23		
Child in Society	-	-	4	-	-	4	-	-	5	-	-	5	-	-	?	-	-	-	0		
Classics	1	-	-	-	-	1	4	-	-	-	-	4	3	-	-	-	-	-	3		
Communication	215	-	-	-	-	215	227	-	-	-	-	227	240	-	-	-	-	-	240		
Computer Science	47	-	-	7	-	54	40	-	18	-	-	18	47	2	-	8	-	-	57		
Early Childhood Education	-	-	11	-	-	11	-	-	13	-	-	13	-	-	12	-	-	-	12		
Economics	111	-	-	22	-	133	119	-	28	-	-	147	120	-	-	23	-	-	143		
Elementary Education	-	-	47	-	-	47	-	-	64	-	-	64	-	-	58	-	-	-	58		
Elementary Education & Moderate Special Needs	-	-	30	-	-	30	-	-	7	-	-	7	-	-	7	-	-	-	7		
English	215	-	-	-	-	215	211	-	-	-	-	211	232	-	-	-	-	-	232		
Environmental Geosciences	-	10	-	-	-	10	-	19	-	-	-	19	-	8	-	-	-	-	8		
Finance	-	-	-	257	-	257	-	-	-	208	-	208	-	-	-	206	-	-	206		
Film Studies	1	-	-	-	-	1	7	-	-	-	-	7	4	-	-	-	-	-	4		
French	8	-	-	-	-	8	11	-	-	-	-	11	7	-	-	-	-	-	7		
Geology	-	-	-	-	-	0	-	-	-	-	-	0	-	0	-	-	-	-	0		
Geophysics	-	2	-	-	-	2	-	2	-	-	-	2	-	0	-	-	-	-	0		
Geology/Geophysics	-	1	-	-	-	1	-	1	-	-	-	1	-	0	-	-	-	-	0		
German	3	-	-	-	-	3	-	-	-	-	-	0	3	-	-	-	-	-	3		
Hispanic Studies	8	-	-	-	-	8	6	-	-	-	-	6	8	-	-	-	-	-	8		
History	119	-	-	-	-	119	125	-	-	-	-	125	145	-	-	-	-	-	145		
Human Development	-	-	85	-	-	85	-	-	79	-	-	79	-	-	75	-	-	-	75		
Independent	2	-	-	-	-	2	-	1	-	-	-	1	1	-	-	-	-	-	1		
Information Systems	-	-	-	27	-	27	-	-	-	43	-	43	-	-	-	32	-	-	32		
International Studies	28	-	-	-	-	28	14	-	-	-	-	14	12	-	-	-	-	-	12		
Italian	1	-	-	-	-	1	-	-	-	-	-	0	2	-	-	-	-	-	2		
Linguistics	1	-	-	-	-	1	1	-	-	-	-	1	1	-	-	-	-	-	1		
Management	-	-	-	17	-	17	-	-	-	18	-	18	-	-	-	21	-	-	21		
Marketing	-	-	-	147	-	147	-	-	-	160	-	160	-	-	-	124	-	-	124		
Mathematics	25	-	-	-	-	25	22	-	-	-	-	22	32	-	-	-	-	-	32		
Mathematic/Computer Science	-	-	-	-	-	0	-	-	3	-	-	3	-	-	0	-	-	-	0		
Music	4	-	-	-	-	4	5	-	-	-	-	5	4	-	-	-	-	-	4		
Nursing	-	-	-	-	47	47	-	-	-	-	64	64	-	-	-	-	43	-	43		
Operations & Technology Mgmt	-	-	-	19	-	19	-	-	-	14	-	14	-	-	-	16	-	-	16		
Organizational Studies/ Human Resource Management	-	-	-	9	-	9	-	-	-	12	-	12	-	-	-	6	-	-	6		
Philosophy	42	-	-	-	-	42	35	-	-	-	-	35	62	-	-	-	-	-	62		
Physics	-	5	-	-	-	5	-	7	-	-	-	7	-	6	-	-	-	-	6		
Political Science	134	-	-	-	-	134	130	-	-	-	-	130	121	-	-	-	-	-	121		
Psychology	146	-	-	-	-	146	155	-	-	-	-	155	151	-	-	-	-	-	151		
Russian	1	-	-	-	-	1	1	-	-	-	-	1	0	-	-	-	-	-	0		
Secondary Education	-	-	22	-	-	22	-	-	24	-	-	24	-	-	29	-	-	-	29		
Severe Special Needs	-	-	5	-	-	5	-	-	3	-	-	3	-	-	3	-	-	-	3		
Slavic Studies	-	-	-	-	-	0	-	-	-	-	-	0	0	-	-	-	-	-	0		
Sociology	89	-	-	-	-	89	53	-	-	-	-	53	87	-	-	-	-	-	87		
Studio Art	11	-	-	-	-	11	9	-	-	-	-	9	6	-	-	-	-	-	6		
Theatre	16	-	-	-	-	16	21	-	-	-	-	21	14	-	-	-	-	-	14		
Theology	11	-	-	-	-	11	22	-	-	-	-	22	21	-	-	-	-	-	21		
Total**	1,246	160	204	582	47	2,239	1,228	157	198	567	64	2,174	1,338	134	184	526	43	2,225			

*Double & triple majors counted by 1st major; Woods CAS majors are not included in this total

Source: Office of Student Services

GRADUATE DEGREES CONFERRED, 2002-2003*

By School, Degree, Primary Field, and Gender

	Doctorates			Master's/Certificates/J.D.			Total		
	Men	Women	Total	Men	Women	Total	Men	Women	Total
Graduate School of Arts & Sciences									
Humanities									
American Studies	-	-	-	-	-	-	-	-	-
Classics	-	-	-	-	-	-	-	-	-
English	1	3	4	10	25	35	11	28	39
History	6	4	10	11	3	14	17	7	24
Latin & Greek	-	-	-	-	1	1	-	1	1
Linguistics	-	-	-	1	-	1	1	-	1
Pastoral Ministry	-	-	-	5	26	31	5	26	31
Philosophy	1	-	1	8	4	12	9	4	13
Religion & Education	2	1	3	-	-	-	2	1	3
Romance Languages	-	3	3	3	9	12	3	12	15
Russian	-	-	-	-	1	1	-	1	1
Slavic Studies	-	-	-	-	-	-	-	-	-
Theology	6	1	7	3	4	7	9	5	14
Social Sciences									
Economics	1	6	7	9	5	14	10	11	21
Political Science	3	0	3	3	1	4	6	1	7
Psychology	1	3	4	0	0	0	1	3	4
Sociology	0	5	5	0	3	3	0	8	8
Sciences									
Biology	2	1	3	6	4	10	8	5	13
Chemistry	10	11	21	1	3	4	11	14	25
Geology/Geophysics	-	-	-	3	7	10	3	7	10
Mathematics	-	-	-	4	3	7	4	3	7
Physics	2	0	2	3	3	6	5	3	8
Total - Graduate A&S	35	38	73	70	102	172	105	140	245
Lynch Graduate School of Education									
Counseling/Counseling Psychology	2	4	6	11	43	54	13	47	60
Curriculum & Instruction& Sp Ed	2	11	13	22	153	175	24	164	188
Developmental/Educational Psych	1	3	4	4	17	21	5	20	25
Educ. Research/Measurement/Evaluation	2	2	4	-	3	3	2	5	7
Higher Education Administration	5	1	6	8	24	32	13	25	38
Religious Education	-	-	-	4	11	15	4	11	15
Educational Administration	5	13	18	11	6	17	16	19	35
Professional School Administration Program	1	3	4	1	1	2	2	4	6
Total - Graduate Education	18	37	55	61	258	319	79	295	374
Carroll Graduate School of Management									
Business Administration	-	-	-	160	90	250	160	90	250
Finance	1	1	2	75	22	97	76	23	99
Organizational Studies	3	-	3	-	-	-	3	-	3
Total - Graduate Management	4	1	5	235	112	347	239	113	352
Connell Graduate School of Nursing									
Nursing	1	8	9	1	49	50	2	57	59
Graduate School of Social Work									
Social Work	1	-	1	15	136	151	16	136	152
Woods College of Advancing Studies									
Administrative Studies	-	-	-	20	34	54	20	34	54
Law School - Law (J.D.)									
	-	-	-	115	158	273	115	158	273
Total Graduate & Professional Degrees	59	84	143	517	849	1,366	576	933	1,509

*August, December and May graduations combined.

Source: Office of Student Services

UNDERGRADUATE AND GRADUATE FINANCIAL AID, 1998-2003

Dollars Awarded (Dollars in Thousands)

	1998-99	1999-00	2000-01	2001-02	2002-03
Type of Aid - Undergraduate					
University Scholarships and Grants ¹	\$48,714	\$52,312	\$54,291	\$58,671	\$60,933
State Scholarships ²	1,643	1,761	2,052	2,136	1,850
Pell Grants ³	2,227	2,251	2,286	2,586	2,695
Supplemental Educational Opportunity Grants	1,555	1,848	1,558	1,622	1,455
Work-Study	1,785	1,664	1,790	1,831	1,851
Perkins Loans ⁴	2,852	3,080	2,556	2,904	2,440
Undergraduate Total	\$58,776	\$62,916	\$64,533	\$69,750	\$71,224
Type of Aid - Graduate					
Work-Study	682	673	696	765	850
Perkins Loans ⁴	1,811	2,332	2,519	3,352	3,586
Total Undergraduate and Graduate	\$61,269	\$65,921	\$67,748	\$73,867	\$75,660

UNDERGRADUATE AND GRADUATE FINANCIAL AID, 1998-2003

Number of Awards

	1998-99	1999-00	2000-01	2001-02	2002-03
Type of Aid - Undergraduate					
University Scholarships and Grants ¹	3,902	3,922	3,842	3,893	3,800
State Scholarships ²	894	937	947	1,010	825
Pell Grants ³	1,104	1,068	1,014	1,030	1,009
Supplemental Educational Opportunity Grants	1,085	1,121	1,000	1,003	980
Work-Study	3,091	3,145	2,894	2,825	1,473
Perkins Loans ⁴	1,701	1,716	1,383	1,551	1,361
Undergraduate Total	11,777	11,909	11,080	11,312	9,448
Type of Aid - Graduate					
Work-Study	658	830	696	694	327
Perkins Loans ⁴	652	726	757	895	952
Total Undergraduate and Graduate⁵	13,087	13,465	12,533	12,901	10,727

¹This statistic includes estimated regular university scholarships and grants (through the operating budget), faculty kin tuition remission, athletic grants, Jesuit Reduction, Alumni Association Scholarships, and endowed monies for scholarships.

²State scholarship funds to students from Massachusetts, Vermont, Connecticut, Pennsylvania, Rhode Island, Maine, New Hampshire; Gilbert Grants; and Herter Scholarships.

³Pell Grant eligibility is determined directly by the federal government.

⁴These loan funds (formerly called "National Direct Student Loans") are obtained by federal government contributions, Boston College contributions, and collections of previous loans awarded.

⁵This is a duplicated total since some students receive more than one type of aid.

Important Note: The above data do not include Boston College student assistance for graduate and professional students (approximately \$19.05 million in tuition remission, grants or scholarships and \$14.66 million in stipends during 2002-2003) administered by the various schools and departments. Also, excluded are the Nursing Loan Program (\$362,850 during 2002-2003), a variety of grants and scholarships from fraternal organizations and clubs (\$5,651,772 during 2002-2003), and loans processed and received by Financial Services (\$78,261,185 during 2002-2003) for undergraduate students, graduate students, or their parents.

Source: Office of Student Financial Strategies

UNDERGRADUATES STUDYING ABROAD

	Fall Semester			Spring Semester			Annual Average		
	University Programs	External Programs	Total All Programs	University Programs	External Programs	Total All Programs	University Programs	External Programs	Total All Programs
1998-1999	156	41	197	276	115	391	216	78	294
1999-2000	196	35	231	348	127	475	272	81	353
2000-2001	230	50	280	347	144	491	289	97	386
2001-2002	239	50	289	224	125	349	277	96	372
2002-2003	255	43	298	222	96	318	279	73	352

Source: Office of Student Services

UNDERGRADUATE STUDENT GRADUATION AND RETENTION RATES Freshman Matriculants in Fall 1996

Rating at Time of Admission	Number of Fall Matriculants	Transfers Out in Good Standing		Within Twelve Semesters Graduates		Retention Rate*
		Number	Percent	Number	Percent	
Top 5%	147	6	4%	131	89%	93%
Next 20%	798	52	7%	697	87%	94%
Remaining 75%	1,307	55	4%	1,141	87%	92%
Total	2,252	113	5%	1,969	87%	92%

* "Retention Rate" is the "graduation rate" plus the "transfer out rate" of students to another college.

Source: Office of Enrollment Management Research: March 1, 2003