

BOARD OF TRUSTEE MEMBERSHIP 2003-2004

Gregory P. Barber, '69
Chairman
Gregory P. Barber & Associates, Inc.

Peter W. Bell, '86
Managing Director
Stowe Capital

***Geoffrey T. Boisi, '69**
J. P. Morgan Chase & Company

Patrick Carney, '70
Chairman and Chief Executive Officer
Claremont Companies

The Honorable Darcel D. Clark, '83
Judge of the Criminal Court
City of New York

***John M. Connors Jr., '63**
Chairman
Hill, Holliday, Connors, Cosmopolos, Inc.

***Kathleen A. Corbet, '82**
Executive Vice President
Alliance Capital Management Corporation

***Joseph E. Corcoran, '59**
Chairman
Corcoran Jennison Companies

Robert F. Cotter, '73
Chief Operating Officer
Starwood Hotels & Resorts Worldwide, Inc.

Robert M. Devlin
Chairman
Curragh Capital Partners

Francis A. Doyle, '70, MBA '75
President and Chief Executive Officer
Connell Limited Partnership

Cynthia Lee Egan, '78
Executive Vice President
Fidelity Management Research
Corporation

Mario J. Gabelli
Chairman and Chief Investment Officer
Gabelli Asset Management

Susan McManama Gianinno, '70
Chairman and CEO
Publicis USA

Mary J. Steele Guilfoile, '76
Chairman
MG Advisors, Inc.

Paul F. Harman, S.J.
Rector of the Jesuit Community
Boston College (effective 3/04)

Daniel J. Harrington, S.J., '64, MA '65
Professor of New Testament
Weston Jesuit School of Theology

John L. Harrington, '57, MBA '66
Executive Director
Yawkey Foundation

Francis R. Herrmann, S.J., J.D. '77
Professor
Boston College Law School

Edmund F. Kelly
Chairman, President and Chief Executive
Officer
Liberty Mutual Group

Robert K. Kraft
Chairman and Owner
New England Patriots

Robert B. Lawton, S.J.
President
Loyola Marymount University

***William P. Leahy, S.J.**
President
Boston College

Peter S. Lynch, '65, LL.D. '95 (Hon.)
Vice Chairman
Fidelity Management and Research

Peter K. Markell, '77
Vice President of Finance
Partners HealthCare

**Kathleen M. McGillicuddy, '71
(Newton College)**
Former Executive Vice President
FleetBoston Financial

***Robert J. Morrissey, Esq., '60**
Partner
Morrissey, Hawkins & Lynch

John P. Murray, S.J.
Executive Assistant to the Provincial
The Society of Jesus - New England
Province

***R. Michael Murray, Jr., '61, M.A. '65**
Member, McKinsey Advisory Committee
McKinsey & Company, Inc.

Therese E. Myers, '66 (Newton College)
Chief Executive Officer
Bouquet Multimedia, LLC

***Edward M. O'Flaherty, S.J., '59, Th.M. '66**
Director, Office of Ecumenical and
Interreligious Affairs
Archdiocese of Boston

Thomas P. O'Neill III, '68
Chairman and Chief Executive Officer
O'Neill and Associates

Brian G. Paulson, S.J.
President
St. Ignatius College Prep

Scott R. Pilarz, S.J.
President
University of Scranton

Sally Engelhard Pingree
Director and Vice Chairman
Engelhard Hanovia, Inc.

Paula D. Polito, '81
Senior Vice President
Merrill Lynch

R. Robert Popeo, Esq., J.D. '61
Chairman
Mintz, Levin, Cohn, Ferris, Glovsky &
Popeo, P.C.

John J. Powers, '73
Managing Director
Goldman Sachs & Company

Michael F. Price
Managing Partner
MFP Investors, LLC

Rev. Nicholas A. Sannella, '67

Randall P. Seidl, '85
Chief Executive Officer
Permabit, Inc.

***Marianne D. Short, Esq., '73
(Newton College), J.D. '76**
Dorsey & Whitney LLP

***Patrick T. Stokes, '64**
President and Chief Executive Officer
Anheuser-Busch Companies, Inc.

Richard F. Syron, '66, L.D. '89 (Hon.)
Executive Chairman
Thermo Electron Corporation

Solomon D. Trujillo
Chief Executive Officer
Orange PCS

Jeffrey P. von Arx, S.J.
Dean of Fordham College at Rose Hill
Fordham University

†Only Boston College degrees listed

*Executive Committee Member

Source: President's Office

TRUSTEE ASSOCIATE MEMBERSHIP 2003-2004

Mary Jane Vouté Arrigoni
Greenwich, CT

Casey C. Beaumier, S.J.
Weston Jesuit School of Theology

Wayne A. Budd, Esq., '63
Executive Vice President and General Counsel
John Hancock Financial Services, Inc.

Denis H. Carroll, '64
Chairman and Chief Executive Officer
CRL Industries, Inc.

James F. Cleary, '50, D.B.A. '93 (Hon.)
Advisory Director
UBS

Charles I. Clough Jr., '64
Chairman and Chief Executive Officer
Clough Capital Partners

Christopher S. Collins, S.J.
Weston Jesuit School of Theology

John M. Corcoran, '48
Partner
John M. Corcoran & Company

John F. Cunningham, '64
Chairman and Chief Executive Officer
Cunningham and Company

Brian E. Daley, S.J.
Professor, Department of Theology
University of Notre Dame

Michael A. Fahey, S.J., '57, L.Th. '65
Professor, Department of Theology
Marquette University

Emilia M. Fanjul
Boston College Parent

John F. Farrell Jr.
Chairman
Automatic Service Company

Yen-Tsai Feng
Roy E. Larsen Librarian (Ret.)
Harvard College

Charles D. Ferris, Esq., '54, J.D. '61, LL.D '78 (Hon.)
Senior Partner
Mintz, Levin, Cohn, Ferris, Glovsky & Popeo, P.C.

Thomas J. Flanagan, '42
Chairman, President & Chief Executive Officer
The Flanagan Group-Technology Consulting

Thomas J. Flatley
President
The Flatley Company

Thomas J. Galligan Jr., '41, D.B.A. '75 (Hon.)
Chairman and Chief Executive Officer (Ret.)
Boston Edison Company

John J. Higgins, S.J., '59, M.A. '60, 'ST.L. '67
Rector of the Jesuit Community
Fairfield University

Richard T. Horan, '53
President
Hughes Oil Company

George W. Hunt, S.J.
Director, Archbishop Hughes Institute
Fordham University

Richard A. Jalkut, '66
President and Chief Executive Officer
TelePacific Communications

Anne P. Jones, Esq., '58, J.D. '61
Consultant

Michael D. Jones, Esq., '72, J.D. '76
Senior Executive Vice President and Chief Administrative Officer
National Association of Securities Dealers, Inc.

Mark A. Kramer, S.J.
Weston Jesuit School of Theology

Judith B. Krauss, '68
Professor of Nursing & Master, Silliman College
Yale University

Francis C. Mackin, S.J., '53
Pastoral Ministry
Boston College

John J. McMullen
(Retired)
McMullen Consultants, Inc.

Catherine T. McNamee, C.S.J., M.Ed '55, M.A. '58
Profesora
Universidad Catolica del Maule

John A. McNeice Jr., '54, DBA '97 (Hon.)
Chairman and Chief Executive Officer (Ret.)
The Colonial Group, Inc.

Robert A. Mitchell, S.J.
Superior
America House

Giles E. Mosher Jr., '55
Vice Chairman (Emeritus)
FleetBoston

Robert J. Murray, '62
Chairman and Chief Executive Officer
New England Business Service, Inc.

Kevin F. O'Brien, S.J.
Weston Jesuit School of Theology

Thomas D. O'Malley
Chairman
Premcor, Inc.

Cornelius W. Owens, '36, LL.D. '68 (Hon.)
Executive Vice President (Ret.)
AT&T

Nicholas S. Rashford, S.J.
President
St. Joseph's University

Thomas J. Rattigan, '60

E. Paul Robsham, M.Ed. '83
Boston College Alumnus

Thomas F. Ryan Jr., '63
Private Investor (Ret.)

John J. Shea, S.J., M.Ed. '70
Vice President for University Ministries
University of Scranton

Sylvia Q. Simmons, M.Ed. '62, Ph.D. '90
President (Ret.)
American Student Assistance Corporation

Robert L. Sullivan, '50, M.A. '52
International Practice Director (Ret.)
Peat, Marwick, Mitchell & Company

TRUSTEE ASSOCIATE MEMBERSHIP 2003-2004 (Continued)

John S. Thiede, S.J.

Instructor of Theology
Creighton University

Sandra J. Thomson, M.D., '58 (Newton College)

Orthopedic Surgeon

Salvatore J. Trani

President and Chief Executive Officer
Garban Corporates, LLC

Thomas A. Vanderslice, Ph.D., '53

Private Investor

Vincent A. Wasik

President
MCG Global, LLC

Benaree P. Wiley

President and Chief Executive Officer
The Partnership, Inc.

Blenda J. Wilson, Ph.D., '79

President and Chief Executive Officer
Nellie Mae Education Foundation

†Only Boston College degrees listed
Source: President's Office

BOARD OF TRUSTEE CHAIRMEN

Cornelius W. Owens	1972-1975
Thomas J. Galligan, Jr.	1975-1978
James P. O'Neill	1978-1981
William F. Connell	1981-1984
David S. Nelson	1984-1987
Thomas A. Vanderslice	1987-1990
John M. Connors, Jr.	1990-1993
Geoffrey T. Boisi	1993-1996
Richard F. Syron	1996-1999
Charles I. Clough, Jr.	1999-2002
John M. Connors, Jr.	2002-

THE JESUIT COMMUNITY AT BOSTON COLLEGE

With nearly 110 members, the Jesuit Community at Boston College is one of the larger communities in the Society of Jesus. Forty-five Jesuits work full-time at Boston College, thirty on different faculties and fifteen in administrative positions. Eleven members of the community, though nominally retired, continue to teach and work in administrative posts on a part-time basis. A number of Jesuits in the community also offer Ignatian retreats and spiritual direction to faculty, staff, and students. Also part of the community are some 21 Jesuits from 16 different

countries who are studying for graduate degrees at the University and several visiting scholars from other institutions. The main community residence is St. Mary's Hall, but there are also four smaller communities around the perimeter of the campus. Six Jesuits live in the residence halls. The Jesuits who staff St. Ignatius Parish are also a part of the Boston College Jesuit Community. For further details, including a list of courses taught by Jesuits at Boston College, see the Jesuit Community Web page at <http://fmwww.bc.edu/SJ>
Source: Rector, Jesuit Community

OFFICERS OF THE UNIVERSITY**2003-2004****President**

William P. Leahy, S.J.

Chancellor

J. Donald Monan, S.J.

Executive Vice President

Patrick J. Keating

**Academic Vice President and
Dean of Faculties**

John J. Neuhauser

**Vice President for University
Mission and Ministry**

Joseph A. Appleyard, S.J.

**Senior Vice President for
University Relations**

Mary Lou DeLong

**Vice President for Facilities
Management**

Thomas Devine

Secretary of the University

Joseph P. Duffy, S.J.

Senior Vice President

James P. McIntyre

**Financial Vice President
and Treasurer**

Peter C. McKenzie

**Vice President for Information
Technology Services**

Marian G. Moore

**Vice President and Assistant
to the President**

William B. Neenan, S.J.

Vice President for Student Affairs

Cheryl L. Presley

Vice President for Human Resources

Leo V. Sullivan

Source: Department of Human Resources

ACADEMIC ADMINISTRATION**2003-2004**John J. Neuhauser, Academic Vice
President and Dean of FacultiesMichael A. Smyer, Associate Academic
Vice President for Research and
Dean of the Graduate School of Arts
and SciencesJ. Joseph Burns, Associate Academic
Vice President for Undergraduate
ProgramsPatricia E. A. DeLeeuw, Associate
Academic Vice President for
FacultiesRita R. Owens, Associate Academic
Vice President for Technology**Enrollment Management**

Robert S. Lay, Dean

**The Woods College of Advancing
Studies**

James A. Woods, S.J., Dean

The College of Arts and Sciences

Joseph F. Quinn, Dean

Mary Daniel O'Keefe, O.P., Associate
DeanGilda A. Morelli, Interim Associate
DeanOurida Mostefai, Interim Associate
DeanWilliam H. Petri, Interim Associate
DeanBarbara A. Viechnicki, Associate Dean
for Finance and Administration**The Graduate School of Arts &
Sciences**

Michael A. Smyer, Dean

Candace Hetzner, Associate Dean

The Lynch School of Education

Joseph M. O'Keefe, S.J., Interim Dean

M. Brinton Lykes, Interim Associate
DeanJohn E. Cawthorne, Associate Dean for
Students and OutreachMary Ellen Fulton, Associate Dean for
Finance, Research, and
Administration**The Law School**

John H. Garvey, Dean

George D. Brown, Associate Dean for
Academic AffairsFilippa M. Anzalone, Associate Dean
for Library and Computing ServicesNorah Wylie, Associate Dean for
StudentsHenry E. Clay, Associate Dean for
Finance and Administration**The Carroll School of Management**

Hossein M. Safizadeh, Interim Dean

Robert A. Taggart, Associate Dean
(Graduate)Richard T. Keeley, Associate Dean
(Undergraduate)Eugene McMahon, Assistant Dean for
Administration**The Connell School of Nursing**

Barbara H. Munro, Dean

Laurel A. Eisenhauer, Associate Dean
(Graduate)Loretta P. Higgins, Associate Dean
(Undergraduate)Susan E. Donelan, Assistant Dean for
Administration**The Graduate School of Social Work**

Alberto Godenzi, Dean

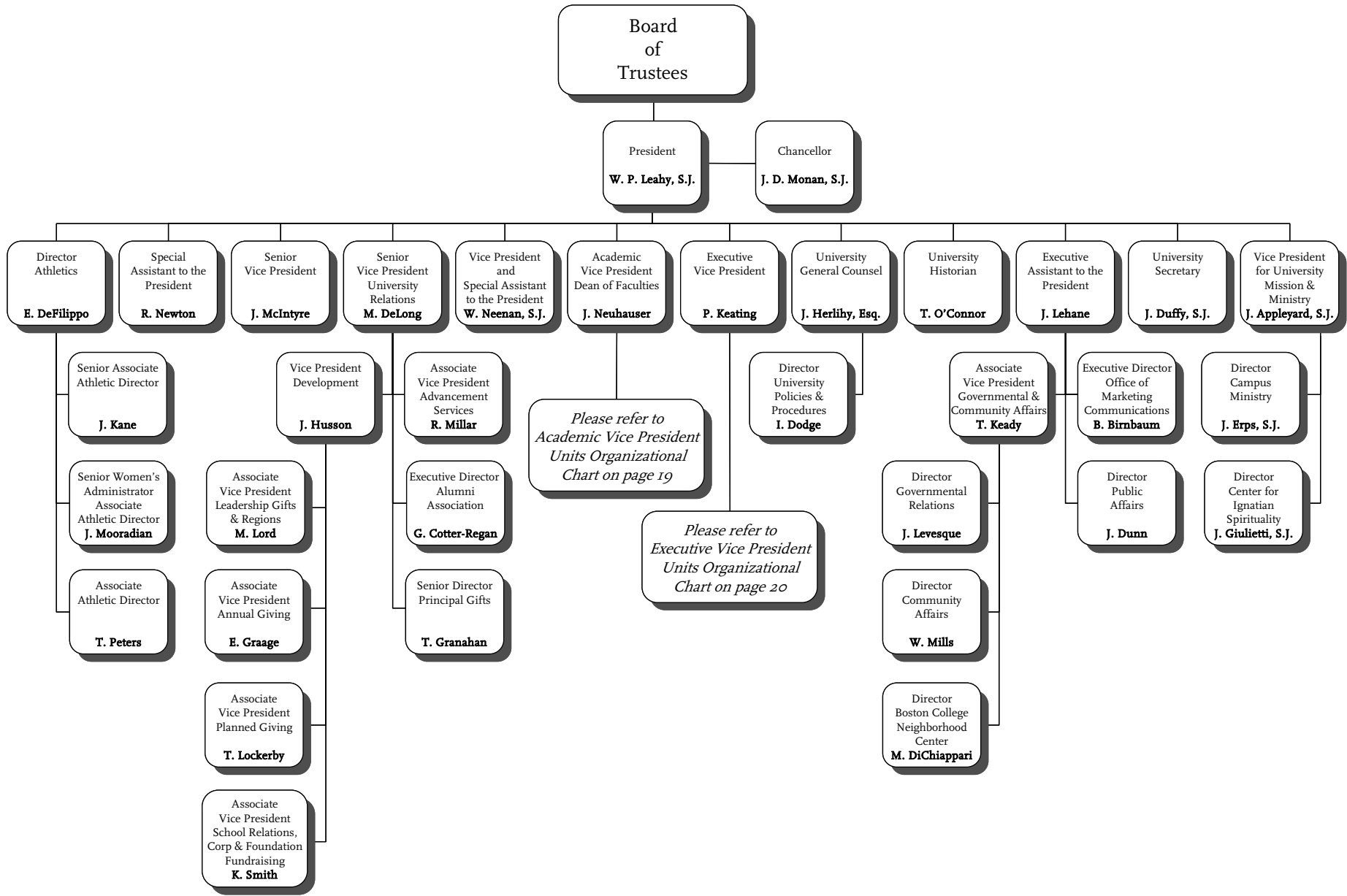
Thomas Walsh, Associate Dean

Harry E. Dumay, Assistant Dean for
Finance and Administration**The Summer Session**

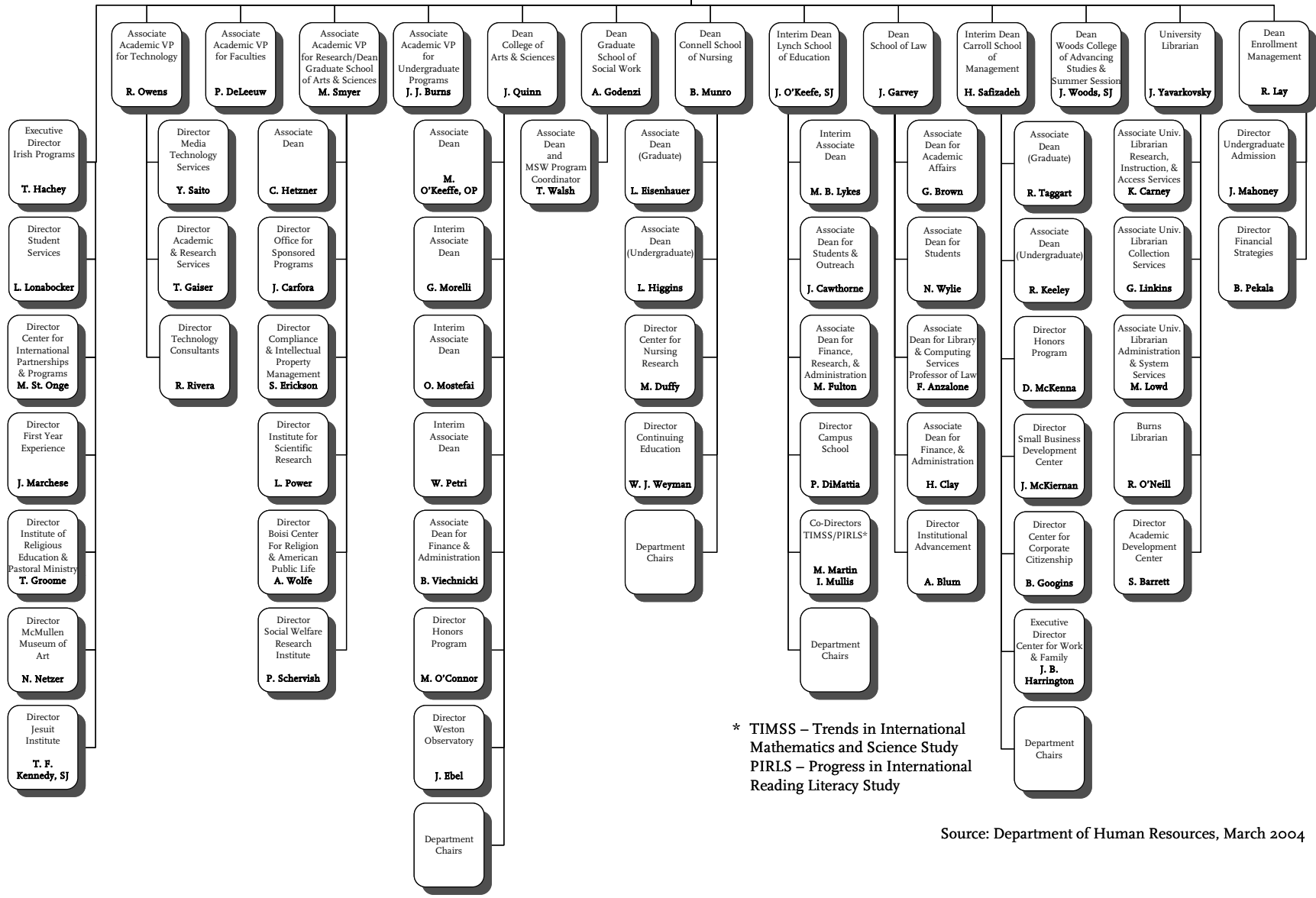
James A. Woods, S.J., Dean

University LibrariesJerome Yavarkovsky, University
Librarian

Source: Department of Human Resources

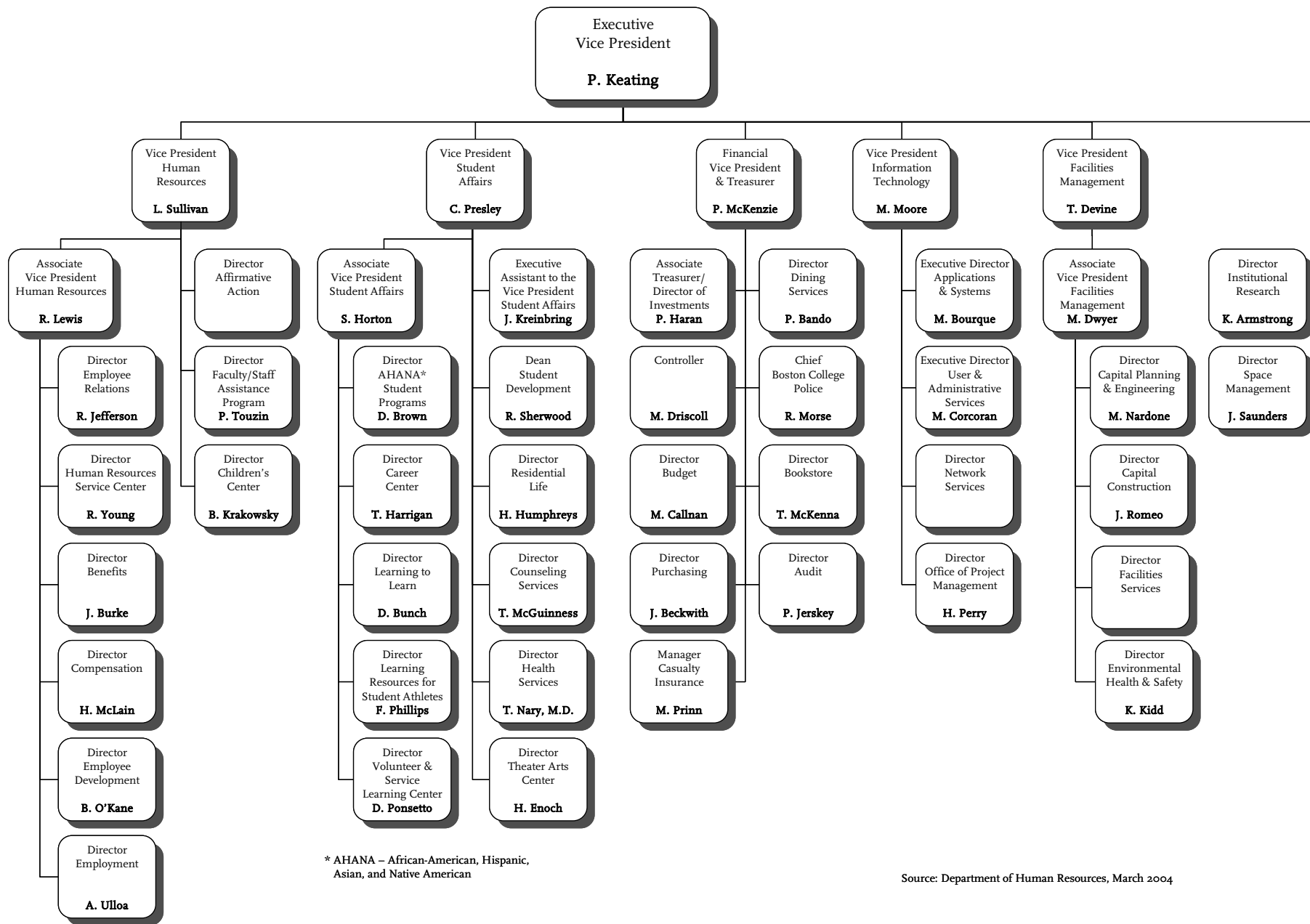


Academic Vice President
Dean of Faculties
J. Neuhauser



* TIMSS – Trends in International Mathematics and Science Study
PIRLS – Progress in International Reading Literacy Study

Source: Department of Human Resources, March 2004



* AHANA – African-American, Hispanic, Asian, and Native American

Source: Department of Human Resources, March 2004

UNIVERSITY ADMINISTRATORS 2003-2004

Academic Development Center

Suzanne M. Barrett, Director

Academic & Research Services

Ted Gaiser, Director

Undergraduate Admission

John L. Mahoney, Jr., Director

AHANA Student Programs

Donald Brown, Director

Alumni Association

Grace Cotter-Regan, Executive Director

Athletics

Eugene B. DeFilippo, Jr., Director

Audit

Pamela Jerskey, Director

Boisi Center for Religion and American Public Life

Alan Wolfe, Director

Bookstore

Thomas McKenna, Director

Budget

Michael T. Callnan, Director

Campus Ministry

James D. Erps, S.J., Director

Campus School

Philip A. DiMattia, Director

Capital Construction

John S. Romeo, Director

Capital Planning & Engineering

Mary S. Nardone, Director

Career Center

Theresa A. Harrigan, Director

Casualty Insurance

Michael J. Prinn, Manager

Community Affairs

William R. Mills, Director

Compliance and Intellectual Property Management

Stephen Erickson, Director

Continuing Education, Connell School of Nursing

W. Jean Weyman, Director

Controller

Michael J. Driscoll

Center for Corporate Citizenship

Bradley Googins, Director

University Counseling Services

Thomas P. McGuinness, Director

Development - Advancement Services

Robert G. Millar, Associate Vice President

Development - Annual Giving

Eric C. Graage, Associate Vice President

Development - Leadership Gifts and Regions

Marianne Lord, Associate Vice President

Development - Principal Gifts

Terrance E. Granahan, Senior Director

Development - School Relations and Corporate & Foundation Fundraising

Katherine V. Smith, Associate Vice President

Dining Service

Patricia A. Bando, Director

Environmental Health and Safety

Keith D. Kidd, Director

Financial Strategies

Bernard A. Pekala, Director

First Year Experience

Joseph P. Marchese, Director

University General Counsel

Joseph Herlihy, Esq.

Governmental and Community Affairs

Thomas J. Keady, Jr., Associate Vice President

Health Services

Thomas I. Nary, M.D., Director

University Historian

Thomas H. O'Connor

Honors Program, College of Arts & Sciences

Mark F. O'Connor, Director

Honors Program, Carroll School of Management

David R. McKenna, Director

Human Resources

Robert J. Lewis, Associate Vice President

Human Resources - Benefits

John R. Burke, Director

Human Resources - Children's Center

Barbara A. Krakowsky, Director

Human Resources - Compensation

Halley McLain, Director

Human Resources - Employee Development

Bernard R. O'Kane, Director

Human Resources - Employee Relations

Richard P. Jefferson, Director

Human Resources - Employment

Anita Ulloa, Director

Human Resources - Faculty/Staff Assistance Program

Patricia A. Touzin, Director

Human Resources Service Center

Richard M. Young, Director

Center for Ignatian Spirituality

Julio Giulietti, S.J., Director

Information Technology - Applications & Systems

Michael Bourque, Executive Director

Information Technology - Project Management

Henry Perry, Director

Information Technology - User & Administrative Services

Mary Corcoran, Executive Director

Office of Institutional Research

Kelli J. Armstrong, Director

Center for International Partnerships & Programs

Marian St. Onge, Director

Irish Programs

Thomas E. Hachey, Executive Director

Jesuit Institute

T. Frank Kennedy, S.J., Director

Law School Institutional Advancement

Alfred A. Blum, Director

UNIVERSITY ADMINISTRATORS 2003-2004 (Continued)

Learning to Learn

Dan Bunch, Director

Learning Resources for Student Athletes

Ferna L. Phillips, Director

Office of Marketing Communications

Ben Birnbaum, Executive Director and Special Assistant to the President

McMullen Museum of Art

Nancy D. Netzer, Director

Media Technology Services

Yoshio Saito, Director

Boston College Neighborhood Center

Maria S. DiChiappari, Director

Center for Nursing Research

Mary E. Duffy, Director

Boston College Police

Robert A. Morse, Chief

University Policies & Procedures

Ivy Dodge, Director

Public Affairs

John B. Dunn, Director

Purchasing

John D. Beckwith, Director

Institute of Religious Education and Pastoral Ministry

Thomas Groome, Director

Residential Life

Henry J. Humphreys, Director

Center for Retirement Research

Alicia H. Munnell, Director

Institute for Scientific Research

Leo F. Power, Jr., Director

Small Business Development Center

John McKiernan, Director

Social Welfare Research Institute

Paul G. Schervish, Director

Space Management

Joyce C. Saunders, Director

Office for Sponsored Programs

John N. Carfora, Director

Student Development

Robert A. Sherwood, Dean

Student Services

Louise M. Lonabocker, Director

Technology Consultants

Raymond Rivera, Director

Theater Arts Center

Howard Enoch, Director

Associate Treasurer

Paul P. Haran, Associate Treasurer and Director of Investments

Volunteer & Service Learning Center

Daniel P. Ponsetto, Director

Weston Observatory

John E. Ebel, Director

Center for Work and Family

J. Bradley Harrington, Executive Director

DEPARTMENT CHAIRPERSONS 2003-2004

Arts & Sciences

Biology Marc A. Muskavitch

Chemistry David L. Mc Fadden

Classical Studies Charles F. Ahern

Communication Dale A. Herbeck

Economics Marvin C. Kraus

English Paul Lewis

Fine Arts John Michalczyk

Geology &

Geophysics Alan L. Kafka

German Studies Michael Resler

History Alan Rogers

Mathematics Gerard E. Keough

Music Thomas O. Lee

Philosophy Patrick Byrne

Physics Kevin Bedell

Political Science Susan Shell

Psychology James Russell

Romance Languages

& Literatures Franco A. Mormando

Slavic & Eastern

Languages Cynthia Simmons

Sociology Stephen J. Pfohl

Theatre Stuart J. Hecht

Theology Kenneth Himes

Carroll School of Management

Accounting Theresa A. Hammond

Business Law Christine N. O'Brien

Computer Science Robert Muller

Finance Hassan Tehranian

Marketing Victoria L. Crittenden

Operations,

Information & Strategic

Management David C. Murphy

Organization Studies Judith Clair

Connell School of Nursing

Adult Health Patricia Tabloski

Community

Health Judith Shindul-Rothschild

Maternal

Child Health Margaret H. Kearney

Psychiatric/Mental

Health Judith Shindul-Rothschild

Lynch School of Education

Counseling, Developmental,

& Educational

Psychology Elizabeth Sparks

Educational Administration

& Higher Education Irwin Blumer

Educational Research,

Measurement,

& Evaluation Larry H. Ludlow

Teacher Education/Special

Education, Curriculum &

Instruction Dennis Shirley

PROFESSIONAL, ADMINISTRATIVE, AND SUPPORT STAFF PERSONNEL By Gender, Fall 2003

	Full-Time Positions				Part-Time Positions				Total Positions	
	Men	Women	Open	Total	Men	Women	Open	Total		
Professional Administrative										
Dean of Faculties*	134	213	25	372	16	19	3	38	410	
Student Affairs	36	56	2	94	17	19	2	38	132	
Athletics	54	31	2	87	23	12	0	35	122	
Information Technology	65	32	5	102	0	2	0	2	104	
Financial Vice President**	62	47	4	113	0	2	1	3	116	
University Relations	20	47	25	92	1	3	0	4	96	
Campus Facilities	46	6	7	59	0	0	0	0	59	
President***	39	16	7	62	4	1	0	5	67	
Human Resources	8	26	0	34	1	0	0	1	35	
Executive Vice President****	1	4	1	6	0	0	0	0	6	
Total	465	478	78	1021	62	58	6	126	1147	
Secretarial, Clerical, Technical										
Secretarial/Clerical	55	312	32	399	12	62	11	85	484	
Library Assistants	24	40	2	66	1	11	0	12	78	
Technical, Other	39	5	2	46	0	0	0	0	46	
Total	118	357	36	511	13	73	11	97	608	
Facilities, Plant Services										
Dining Services	115	59	10	184	1	5	14	20	204	
Housekeeping	104	46	4	154	0	0	0	0	154	
Grounds & Trades	101	1	1	103	0	0	0	0	103	
Gate Attendants, Police	49	7	2	58	9	5	4	18	76	
Mailroom, Switchboard	11	3	0	14	3	1	0	4	18	
Total	380	116	17	513	13	11	18	42	555	
TOTAL POSITIONS	963	951	131	2045	88	142	35	265	2310	

*Includes academic administration, Student Services, and all library professional administrative staff.

**Includes Financial and Business Affairs, Bookstore, Boston College Police, Bureau of Conferences, Dining Services.

***Includes Office of the President, Office of the Senior Vice President, Mission and Ministry, Boston College Neighborhood Center, Marketing Communications, Public Affairs, Governmental and Community Affairs, University Policy and Procedures, University General Counsel, University Historian, University Secretary, and all executives.

****Includes the Offices of Space Management and Program Management.

Note: The above figures represent all permanent positions funded by the University as of November 21, 2003. Restricted funded positions are not included. Positions funded partially by outside contracts or grants are counted above as part-time University Positions.

Source: Department of Human Resources

RESTRICTED FUNDED PERSONNEL By Gender and FTE, Fall 2003

	Full-Time Positions				Part-Time Positions				Total Positions	Total FTE
	Men	Women	Total	FTE	Men	Women	Total	FTE		
Faculty	2	3	5	5.0	0	1	1	0.5	6	5.5
Professional, Administrative	17	45	62	62.0	10	20	30	18.0	92	80.0
Research Associate or Assistant	61	53	114	114.0	2	7	9	5.3	123	119.3
Secretarial, Clerical, Technical	0	7	7	7.0	0	2	2	1.0	9	8.0
Total Positions	80	108	188	188.0	12	30	42	24.8	230	212.8

Note: Incremental restricted funded positions supported entirely by Contract and Grant, Endowment or Restricted Gift funding as of November 1, 2003.

Source: Department of Human Resources

FACULTY BY SCHOOL AND RANK*

2002-2003

School	Professor		Associate		Assistant		Instructor		Total		Faculty on leave**
	No.	%	No.	%	No.	%	No.	%	No.	%	
Arts & Sciences	148	38%	149	38%	83	21%	11	3%	391	100%	30
Education	22	41%	17	31%	15	28%	0	0%	54	100%	2
Law	22	48%	18	39%	6	13%	0	0%	46	100%	8
Management	26	30%	34	37%	27	31%	0	0%	87	100%	3
Nursing	8	18%	19	56%	8	18%	9	20%	44	100%	0
Social Work	4	24%	8	47%	4	24%	1	6%	17	100%	1
Total	230	36%	245	38%	143	22%	21	3%	639	100%	44

* Includes all full-time regular faculty members.

Source: Office of the Academic Vice President

** Includes Faculty who were on unpaid leave for all or part of the 2002-03 academic year.

FACULTY BY SCHOOL AND GENDER

2002-2003

School	Women		Men		Total	Women	Men
	No.	%	No.	%		%	%
Arts & Sciences	120	50%	271	68%	391	31%	69%
Education	27	11%	27	7%	54	50%	50%
Law	18	8%	28	7%	46	39%	61%
Management	23	10%	64	16%	87	26%	74%
Nursing	43	18%	1	0%	44	98%	2%
Social Work	9	4%	8	2%	17	53%	47%
Total	240	100%	399	100%	639		

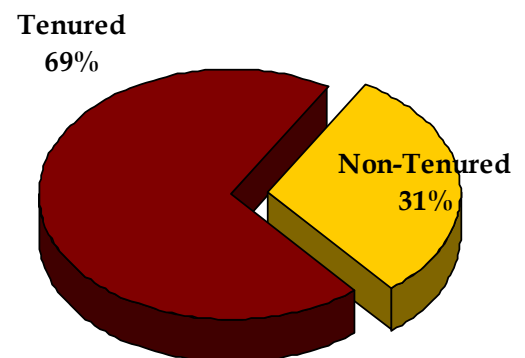
Source: Office of the Academic Vice President

FACULTY BY SCHOOL AND TENURE STATUS

2002-2003

School	Tenured Faculty		Non-Tenured Faculty		Total	
	No.	%	No.	%	No.	%
Arts & Sciences	285	73%	106	27%	391	100%
Education	36	67%	18	33%	54	100%
Law	29	63%	17	37%	46	100%
Management	56	64%	31	36%	87	100%
Nursing	26	59%	18	41%	44	100%
Social Work	11	65%	6	35%	17	100%
Total	443	69%	196	31%	639	100%

Source: Office of the Academic Vice President



FACULTY BY HIGHEST DEGREE EARNED AND RANK 2002-2003

Degree	Professor		Associate		Assistant		Instructor		Total	
	No.	%	No.	%	No.	%	No.	%	No.	%
Doctorate	212	100%	274	98%	121	96%	4	17%	611	96%
Master's	0	0%	3	2%	5	4%	20	83%	28	4%
Total	212	100%	277	100%	126	100%	24	100%	639	100%

Source: Office of the Academic Vice President

96% of Boston College
faculty members
hold a doctoral degree

FACULTY BY HIGHEST DEGREE EARNED AND GENDER 2002-2003

Degree	Women		Men		Total	
	No.	%	No.	%	No.	%
Doctorate	228	95%	383	96%	611	96%
Master's	12	5%	16	4%	28	4%
Total	240	100%	399	100%	639	100%

Source: Office of the Academic Vice President

FACULTY BY RANK AND GENDER 2002-2003

Rank	Women		Men		Total	
	No.	%	No.	%	No.	%
Professor	62	26%	165	41%	227	36%
Associate	87	36%	150	38%	237	37%
Assistant	67	28%	74	19%	141	22%
Instructor	24	10%	10	3%	34	5%
Total	240	100%	399	100%	639	100%

Source: Office of the Academic Vice President

FULL-TIME EQUIVALENT FACULTY, TEACHING FELLOWS, AND TEACHING ASSISTANTS By School, 2002-2003

School	FTE of Full-Time Faculty		FTE of Part-Time Faculty		FTE of Teaching Fellows & Assistants		Total FTE Faculty	
	No.	%	No.	%	No.	%	No.	%
Arts & Sciences	367.95	61%	106.50	56%	120.00	79%	594.45	63%
Education	45.50	7%	27.33	14%	26.00	17%	98.83	10%
Management	89.00	15%	17.00	9%	0.00	0%	106.00	11%
Nursing	39.00	6%	4.75	3%	6.25	4%	50.00	5%
Law	48.50	8%	9.00	5%	0.00	0%	57.50	6%
Social Work	18.00	3%	24.50	13%	0.00	0%	42.50	4%
Total	607.95	100%	189.08	100%	152.25	100%	949.28	100%

Source: Office of the Academic Vice President

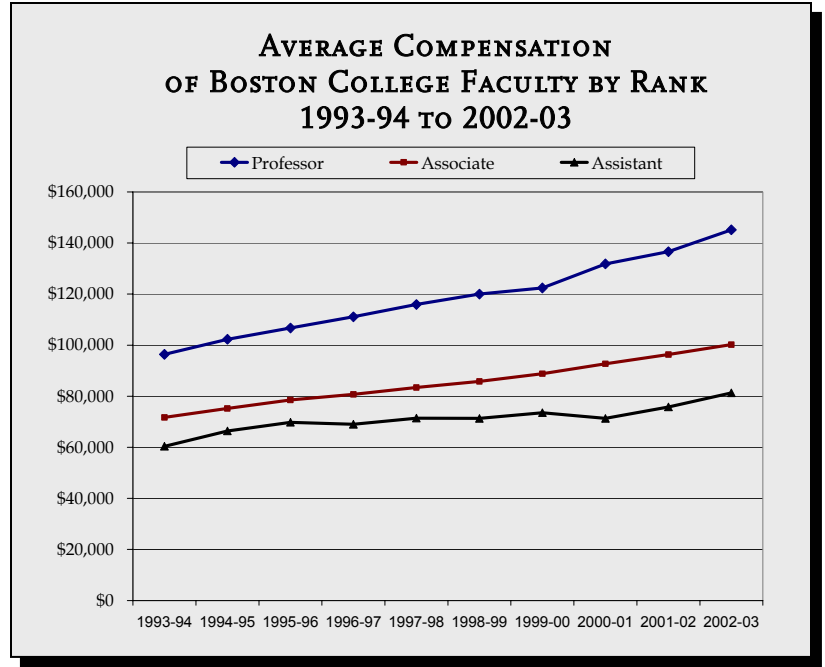
FULL-TIME FACULTY, TEACHING FELLOWS, AND TEACHING ASSISTANTS By School and Department, 2002-2003

	Full-Time Faculty	Teaching Fellows	Teaching Assistants
Arts & Sciences			
Biology	21	-	39
Chemistry	18	-	46
Classics	4	-	-
Communication	16	-	-
Economics	24	9	7
English	41	24	-
Fine Arts	16	-	-
Geology	9	-	14
Germanic Studies	3	-	-
History	36	10	18
Honors Program	9	-	-
Mathematics	22	5	8
Music	4	-	-
Philosophy	29	23	-
Physics	12	-	30
Political Science	21	4	-
Psychology	19	-	7
Romance Languages	21	40	-
Slavic	4	-	2
Sociology	19	10	12
Theater	5	-	-
Theology	38	6	16
Total A&S	391	131	199
Education	54	38	38
Law	46	-	-
Management	87	-	-
Nursing	44	15	3
Social Work	17	-	-
Total	639	184	240

Source: Office of the Academic Vice President

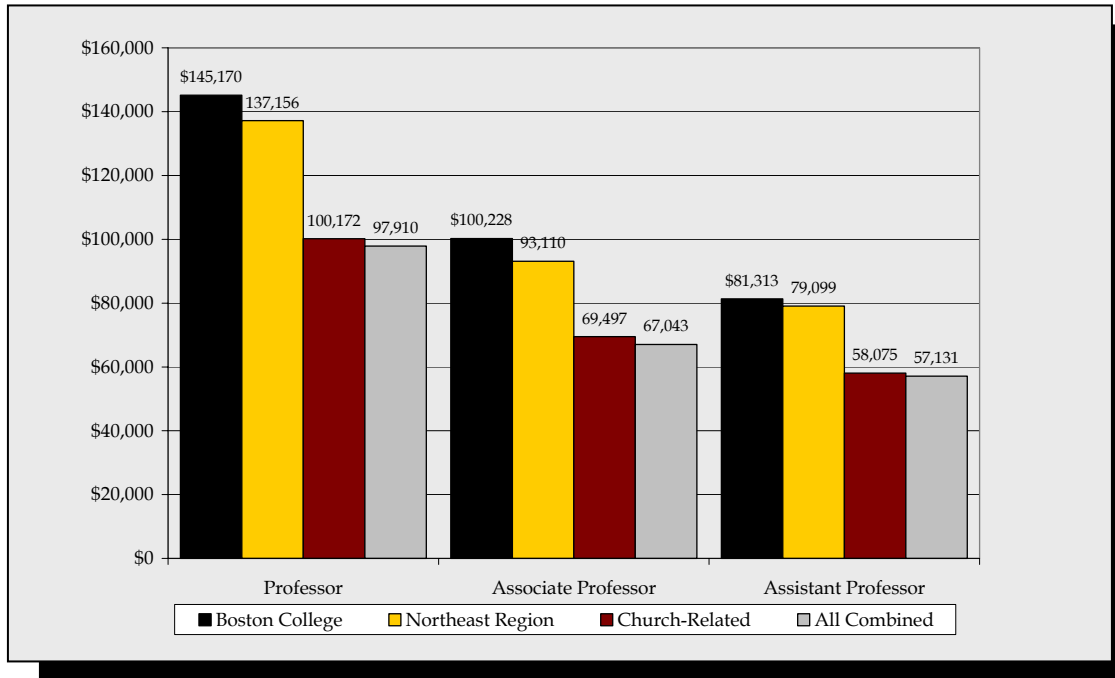
FACULTY COMPENSATION*
Average by Rank

Year	Professor	Associate	Assistant
1993-94	\$96,400	\$71,700	\$60,400
1994-95	102,300	75,200	66,400
1995-96	106,700	78,500	69,800
1996-97	111,100	80,700	69,000
1997-98	115,900	83,400	71,400
1998-99	120,000	85,800	71,300
1999-00	122,387	88,815	73,542
2000-01	131,800	92,700	71,300
2001-02	136,600	96,300	75,800
2002-03	145,170	100,228	81,313



*Includes salary and fringe benefits.
Source: Office of the Academic Vice President

FACULTY COMPENSATION BY RANK*
Boston College Average Compared to AAUP Category I (9-Month Equivalent), 2002-2003



*Includes salary and fringe benefits.
Source: Office of the Academic Vice President