

### Full-Time Freshman Enrollment By Year and Gender

Fall	Men	Women	Total
1993	1,017	1,137	2,154
1994	1,083	1,167	2,250
1995	1,003	1,137	2,140
1996	1,145	1,329	2,474
1997	1,084	1,084	2,168
1998	1,063	1,184	2,247
1999	1,103	1,181	2,284
2000	1,114	1,132	2,246
2001	940	1,163	2,103
2002	1,150	1,165	2,315

Source: Office of Undergraduate Admission

### Freshman Admission Profile Middle 50% Range of SAT Scores

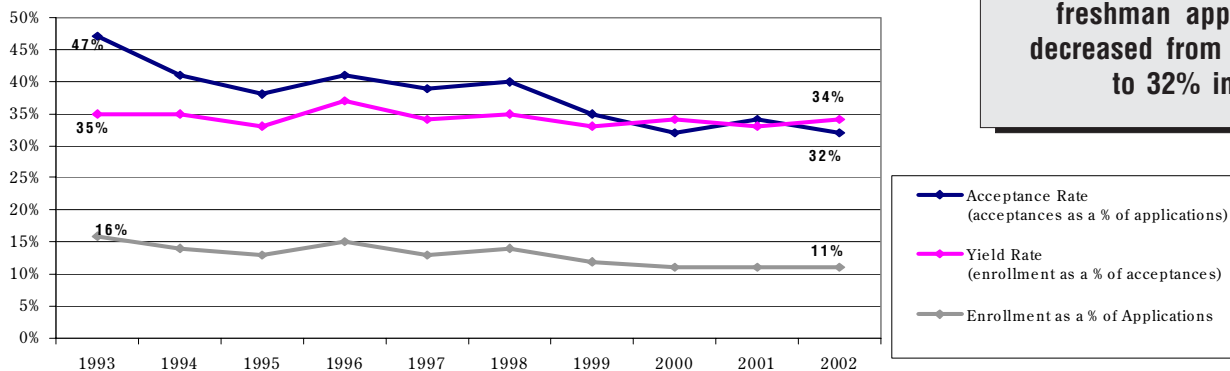
Class	Verbal	Math	Combined
1997	520 - 610	600 - 690	1,140 - 1,270
1998	520 - 610	600 - 690	1,140 - 1,280
1999	520 - 620	610 - 700	1,140 - 1,300
2000*	580 - 670	600 - 690	1,200 - 1,340
2001	580 - 680	610 - 690	1,210 - 1,340
2002	590 - 680	610 - 690	1,210 - 1,350
2003	590 - 680	610 - 690	1,210 - 1,360
2004	600 - 690	620 - 700	1,230 - 1,370
2005	600 - 690	620 - 700	1,240 - 1,380
2006	600 - 690	620 - 710	1,250 - 1,390

\* Statistics for the Class of 2000 begin College Board recentered score series.

Note: SAT score ranges, 25th percentile - 75th percentile, are now the standard reporting statistic in all major admission guides.

Source: Office of Undergraduate Admission (Table compiled by the Office of Enrollment Management Research.)

### Freshman Applications, Acceptances, and Enrollment Full-Time



**The acceptance rate of freshman applicants has decreased from 47% in 1992 to 32% in 2002.**

Fall	Applications	Acceptances	Acceptances as a % of Applications	Total Enrollment	Enrollment as a % of Acceptances	Enrollment as a % of Applications
1993	13,112	6,179	47	2,154	35	16
1994	15,522	6,378	41	2,250	35	14
1995	16,680	6,399	38	2,140	33	13
1996	16,501	6,750	41	2,474	37	15
1997	16,455	6,455	39	2,168	34	13
1998	16,373	6,484	40	2,247	35	14
1999	19,746	6,976	35	2,284	33	12
2000	20,743	6,587	32	2,246	34	11
2001	19,059	6,401	34	2,103	33	11
2002	21,133	6,850	32	2,315	34	11

Note: Freshman enrollment reported above is based on deposits received, on or before the deadline set by the Committee on Admission, from students accepting the offer of admission extended by the University. Withdrawals may occur during the summer and the first two weeks in September. Enrollment figures for Fall 2002 are based on deposits received as of May 10, 2002.

Source: Office of Undergraduate Admission