

ADMINISTRATION & FACULTY

PHOTO

Board of Trustee Membership† 2002-2003

Gregory P. Barber, '69
Chairman
Gregory P. Barber & Associates, Inc.

Peter W. Bell, '86
Chairman and Chief Executive Officer
StorageNetworks, Inc.

* **Geoffrey T. Boisi, '69**
Vice Chairman
J. P. Morgan Chase & Company

The Honorable Darcel D. Clark, '83
Judge of the Criminal Court
City of New York

* **Charles I. Clough, Jr., '64**
Chairman and Chief Executive Officer
Clough Capital Partners

* **John M. Connors, Jr., '63**
Chairman and Chief Executive Officer
Hill, Holliday, Connors, Cosmopolis, Inc.

* **Kathleen A. Corbet, '82**
Executive Vice President
Alliance Capital Management Corporation

* **Joseph E. Corcoran, '59**
Chairman
Corcoran Jennison Companies

Robert F. Cotter, '73
Chief Operating Officer
Starwood Hotels & Resorts Worldwide, Inc.

Robert M. Devlin
Chairman
Curragh Capital Partners

Francis A. Doyle, '70, MBA '75
President and Chief Executive Officer
Connell Limited Partnership

Susan McManama Gianinno, '70
Chairman, President, and Chief Branding
Officer, Worldwide
D'Arcy Masius Benton & Bowles, Inc.

Mary J. Steele Guilfoile, '76
Executive Vice President and
Chief Administrative Officer
J. P. Morgan

Daniel J. Harrington, S.J., '64, MA '65
Professor of New Testament
Weston Jesuit School of Theology

John L. Harrington, '57, MBA '66
Executive Director
Yawkey Foundation

Francis R. Herrmann, S.J., J.D. '77
Rector of the Jesuit Community
Boston College

Edmund F. Kelly
Chairman, President,
and Chief Executive Officer
Liberty Mutual Group

Robert B. Lawton, S.J.
President
Loyola Marymount University

* **William P. Leahy, S.J.**
President
Boston College

Peter S. Lynch, '65, LL.D. '95 (Hon.)
Vice Chairman
Fidelity Management and Research

Peter K. Markell, '77
Vice President/Finance
Partners HealthCare

**Kathleen M. McGillicuddy, '71 (Newton
College)**
Former Executive Vice President
FleetBoston Financial

**John A. McNeice, Jr., '54,
D.B.A. '97 (Hon.)**
Chairman and Chief Executive Officer
(Retired)
The Colonial Group, Inc.

* **Robert J. Morrissey, Esq., '60**
Partner
Morrissey, Hawkins & Lynch

John P. Murray, S.J.
Executive Assistant to the Provincial
The Society of Jesus-New England Province

* **R. Michael Murray, Jr., '61, M.A. '65**
Director
McKinsey & Company, Inc.

Therese E. Myers, '66 (Newton College)
Chief Executive Officer
Bouquet Multimedia, LLC

* **Edward M. O'Flaherty, S.J., '59,
Th.M. '66**
Director, Office of Ecumenical and
Interreligious Affairs
Archdiocese of Boston

Thomas P. O'Neill III, '68
Chairman and Chief Executive Officer
FH/GPC International

Brian G. Paulson, S.J.
President
St. Ignatius College Prep

Sally Engelhard Pingree
Director and Vice Chairman
Engelhard Hanovia, Inc.

Board of Trustee Chairmen

Cornelius W. Owens 1972-1975
Thomas J. Galligan, Jr. 1975-1978
James P. O'Neill 1978-1981
William F. Connell 1981-1984
David S. Nelson 1984-1987
Thomas A. Vanderslice 1987-1990
John M. Connors, Jr. 1990-1993
Geoffrey T. Boisi 1993-1996
Richard F. Syron 1996-1999
Charles I. Clough, Jr. 1999-2002
John M. Connors, Jr. 2002-

Source: President's Office

R. Robert Popeo, Esq., J.D. '61
Chairman
Mintz, Levin, Cohn, Ferris, Glosky
and Popeo, P.C.

John J. Powers, '73
Managing Director
Goldman Sachs & Company

Michael F. Price
Managing Partner
MFP Investors, LLC

Thomas J. Rattigan, '60
Chairman and Chief Executive Officer (Retired)
G. Heileman Brewing Company

Thomas F. Ryan, Jr., '63
Hill, Holliday, Connors, Cosmopolis, Inc.

Nicholas A. Sannella, M.D., '67

Randall P. Seidl, '85
Co-Founder and Executive Vice President
Giantloop Network

* **Marianne D. Short, Esq., '72 (Newton
College), J.D. '76**
Dorsey & Whitney LLP

Patrick T. Stokes, '64
President and Chief Executive Officer
Anheuser-Busch, Inc.

Richard F. Syron, '66, L.D. '89 (Hon.)
Chairman and Chief Executive Officer
Thermo Electron Corporation

Jeffrey P. von Arx, S.J.
Dean of Fordham College at Rose Hill
Fordham University

Benaree P. Wiley
President and Chief Executive Officer
The Partnership, Inc.

† Only Boston College degrees listed.

* Executive Committee Member.

Source: President's Office

Trustee Associate Membership 2002-2003

Mary Jane Vouté Arrigoni
Greenwich, CT

William L. Brown
Chairman of the Board (Retired)
Fleet Boston

Wayne A. Budd, Esq., '63
Executive Vice President and General Counsel
John Hancock Financial Services, Inc.

Patrick Carney, '70
Chairman and Chief Executive Officer
Claremont Companies

Denis H. Carroll, '64
Chairman and Chief Executive Officer
CRL Industries, Inc.

James F. Cleary, '50, D.B.A. '93 (Hon.)
Advisory Director
UBS PaineWebber, Inc.

John M. Corcoran, '48
Partner
John M. Corcoran & Company

John F. Cunningham, '64
Chairman and Chief Executive Officer
Cunningham and Company

Brian E. Daley, S.J.
Professor, Department of Theology
University of Notre Dame

Michael A. Fahey, S.J., '57, L.Th. '65
Professor, Department of Theology
Marquette University

Emilia M. Fanjul
Boston College Parent

John F. Farrell, Jr.
Chairman
Automatic Service Company

Yen-Tsai Feng
Roy E. Larsen Librarian (Retired)
Harvard College

Charles D. Ferris, Esq., '54, J.D. '61, LL.D. '78 (Hon.)
Senior Partner
Mintz, Levin, Cohn, Ferris, Glosky and Popeo, P.C.

Thomas J. Flanagan, '42
Chairman, President, and Chief Executive Officer
The Flanagan Group

Thomas J. Flatley
President
The Flatley Group

Thomas J. Galligan, Jr., '41, D.B.A. '75 (Hon.)
Chairman and Chief Executive Officer (Retired)
Boston Edison Company

Samuel J. Gerson, '63
Chief Executive Officer (Retired)
Filene's Basement

Daniel S. Hendrickson, S.J.
Department of Philosophy
Creighton University

John J. Higgins, S.J., '59, M.A. '60, ST.L. '67
Rector of the Jesuit Community
Fairfield University

Richard T. Horan, '53
President
Hughes Oil Company

George W. Hunt, S.J.
Director, Archbishop Hughes Institute
Fordham University

Richard A. Jalkut, '66
President and Chief Executive Officer
Pathnet

Anne P. Jones, Esq., '58, J.D. '61
Consultant

Michael D. Jones, Esq., '72, J.D. '76
Executive Vice President and Chief Administrative Officer
National Association of Securities Dealers, Inc.

Judith B. Krauss, '68
Professor of Nursing & Master, Silliman College
Yale University

Francis C. Mackin, S.J., M.A. '51
Pastoral Ministry
Boston College

James P. McDermott, S.J.
Weston Jesuit School of Theology

John J. McMullen
(Retired)
McMullen Consultants, Inc.

Catherine T. McNamee, C.S.J., M.Ed. '55, M.A. '58
Universidad Catolica del Maule

Robert A. Mitchell, S.J.
Superior
America House

Giles E. Mosher, Jr., '55
Vice Chairman (Emeritus)
Fleet Boston

Robert J. Murray, '62
Chairman, President & Chief Executive Officer
New England Business Service, Inc.

Thomas D. O'Malley
Chairman
Premcor, Inc.

Cornelius W. Owens, '36, LL.D. '68 (Hon.)
Executive Vice President (Retired)
AT&T

Nicholas S. Rashford, S.J.
President
St. Joseph's University

E. Paul Robsham, M.Ed. '83
Boston College Alumnus

John J. Shea, S.J., M.Ed. '70
Vice President for University Ministries
University of Scranton

Sylvia Q. Simmons, M.Ed. '62, Ph.D. '90
President (Retired)
American Student Assistance Corporation

Robert L. Sullivan, '50, M.A. '52
International Practice Director (Retired)
Peat, Marwick, Mitchell & Company

John S. Thiede, S.J.
Weston Jesuit School of Theology

Sandra J. Thomson, M.D., '58 (Newton College)
Orthopedic Surgeon

Salvatore J. Trani
President
Garban Corporates, LLC

Thomas A. Vanderslice, '53
Private Investor

Vincent A. Wasik
President
MCG Global, LLC

Blenda J. Wilson, Ph.D. '79
President and Chief Executive Officer
Nellie Mae Education Foundation

Note: Only Boston College degrees listed.
Source: President's Office

The Jesuit Community at Boston College

With nearly 125 members, the Jesuit Community at Boston College is among the largest in the world and is certainly the largest in any college or university. Forty-nine Jesuits work full-time at Boston College, 31 on different faculties and 18 in administrative positions. One third of the community consists of Jesuits nominally retired from academic work at Boston College, but many of these still teach and work in administrative posts on a part-time basis. A number of Jesuits in the community also offer Ignatian retreats and spiritual direction to faculty, staff, and students. Also part of the community are some 25 Jesuits from 17 different countries who are studying for graduate degrees at the University and several visiting scholars from other institutions. The main community residence is St. Mary's Hall, but there are also six smaller communities around the perimeter of the campus. Five Jesuits live in the residence halls. The Jesuits who staff St. Ignatius Parish are also a part of the Boston College Jesuit Community. For further details, including a list of courses taught by Jesuits at Boston College, see the Jesuit Community Web page at <http://fmwww.bc.edu/SJ>

Source: Rector, Jesuit Community

Officers of the University Fall 2002

President

William P. Leahy, S.J.

Chancellor

J. Donald Monan, S.J.

Executive Vice President

Patrick J. Keating

Academic Vice President and Dean of Faculties

John J. Neuhauser

Vice President for University Mission and Ministry

Joseph A. Appleyard, S.J.

Senior Vice President for University Relations

Mary Lou DeLong

Secretary of the University

Joseph P. Duffy, S.J.

Senior Vice President

James P. McIntyre

Financial Vice President and Treasurer

Peter C. McKenzie

Vice President and Assistant to the President

William B. Neenan, S.J.

Vice President for Student Affairs

Cheryl L. Presley

Vice President for Human Resources

Leo V. Sullivan

Source: Department of Human Resources

Academic Administration Fall 2002

John J. Neuhauser, Academic Vice President
and Dean of Faculties

Michael A. Smyer, Associate Vice President
for Research and Dean of the
Graduate School of Arts and Sciences

Patricia E. A. DeLeeuw, Associate Academic
Vice President for Faculties

Rita R. Owens, Associate Academic Vice President
for Technology

The Woods College of Advancing Studies

James A. Woods, S.J., Dean

The College of Arts and Sciences

Joseph F. Quinn, Dean

J. Joseph Burns, Associate Dean

Clare M. Dunsford, Associate Dean

Gilda A. Morelli, Acting Associate Dean

Mary Daniel O'Keefe, O.P., Associate Dean

Barbara A. Viechnicki, Associate Dean
for Administration

The Graduate School of Arts and Sciences

Michael A. Smyer, Dean

Candace Hertzner, Associate Dean

The Lynch School of Education

Mary M. Brabeck, Dean

Joseph M. O'Keefe, S.J., Associate Dean

Mary Ellen Fulton, Associate Dean
for Finance and Administration

The Law School

John H. Garvey, Dean

Sharon Hamby O'Connor, Associate Dean
for Academic Affairs

Henry E. Clay, Associate Dean for Finance
and Administration

Norah Wylie, Associate Dean for Students
Filippa M. Anzalone, Associate Dean
for Library and Computing Services
Elizabeth Rosselot, Assistant Dean for
Admissions and Financial Aid

The Carroll School of Management

Helen F. Peters, Dean

Robert A. Taggart, Associate Dean (Graduate)

Richard T. Keeley, Associate Dean
(Undergraduate)

James Halpin, Assistant Dean for Academic
Counseling

Christine Lunt, Assistant Dean for External
Relations and Career Services

Eugene McMahan, Assistant Dean for
Administration

Warren Zola, Assistant Dean Graduate
Management Program

The School of Nursing

Barbara H. Munro, Dean

Laurel A. Eisenhauer, Associate Dean
(Graduate)

Loretta P. Higgins, Associate Dean
(Undergraduate)

Susan E. Donelan, Assistant Dean for
Administration

The Graduate School of Social Work

Alberto Godenzi, Dean

Thomas Walsh, Interim Associate Dean

Harry E. Dumay, Assistant Dean for
Administration

Regina O'Grady-LeShane, Assistant Dean
for Academic and Student Services

The Summer Session

James A. Woods, S.J., Dean

Source: Department of Human Resources

Department Chairpersons Fall 2002

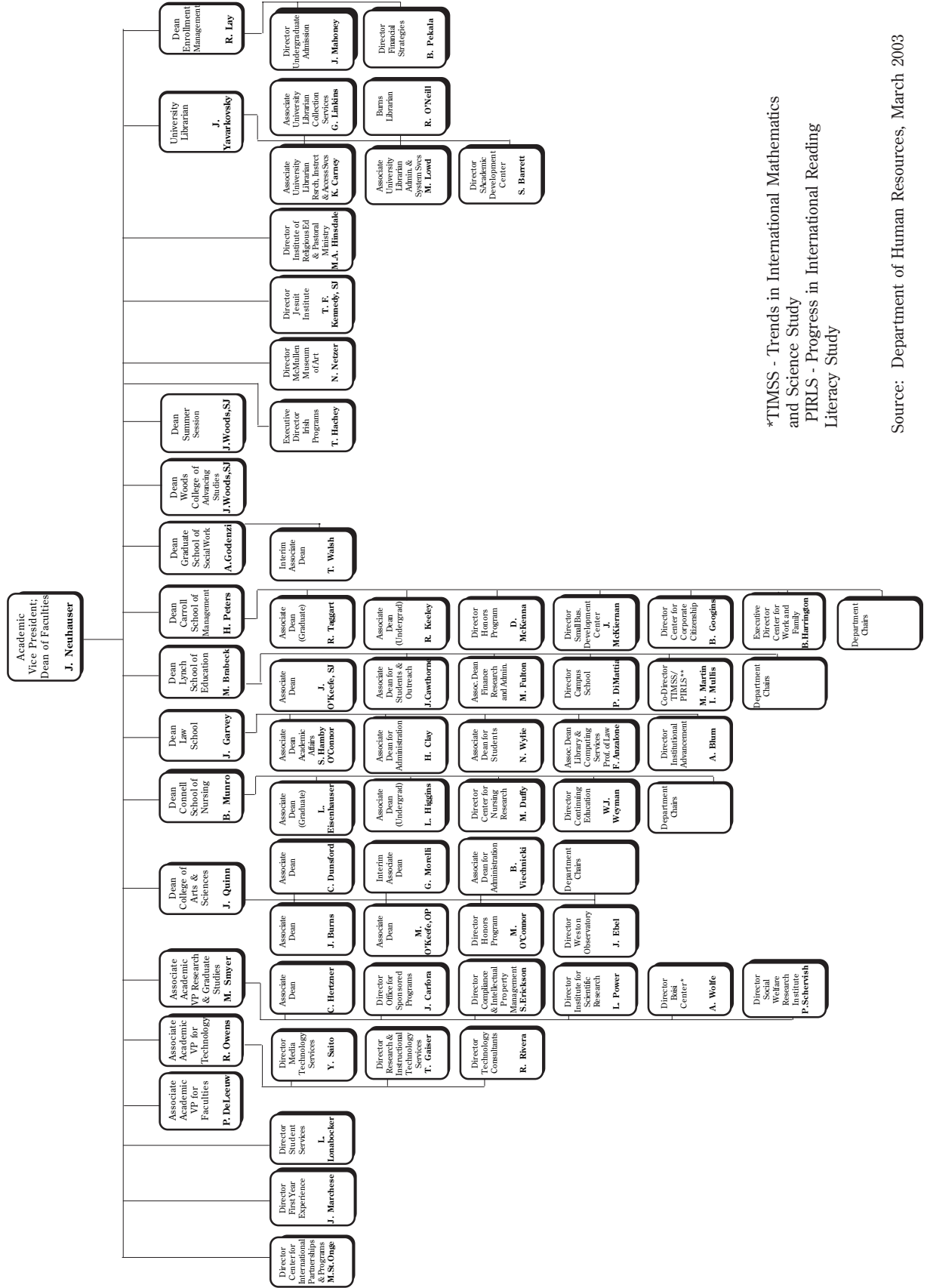
Accounting Greg Trompeter
Biology Marc Muskavitch
Business Law Christine O'Brien
Chemistry David McFadden
Classical Studies Charles F. Ahern, Jr.
Communication Dale Herbeck
Computer Science Robert Muller
Economics Peter Ireland
English Paul Lewis
Finance Alan Marcus
Fine Arts John Michalczyk

Geology and
Geophysics Alan L. Kafka
Germanic Studies Michael Resler
History Peter Weiler
Marketing Victoria Crittenden
Mathematics Gerald E. Keough
Music T. Frank Kennedy, S.J.
Operations &
Strategic Management ... David Murphy
Organizational Studies ... Judith Clair
Philosophy Thomas Hibbs
Physics Kevin Bedell

Political Science Kay Schlozman
Psychology Hiram H. Brownell
Romance Languages
and Literature Franco A. Mormando, S.J.
Slavic and Eastern
Languages Cynthia Simmons
Sociology Stephen Pfohl
Theater Stuart Hecht
Theology Stephen Pope

Source: Office of the Academic Vice President

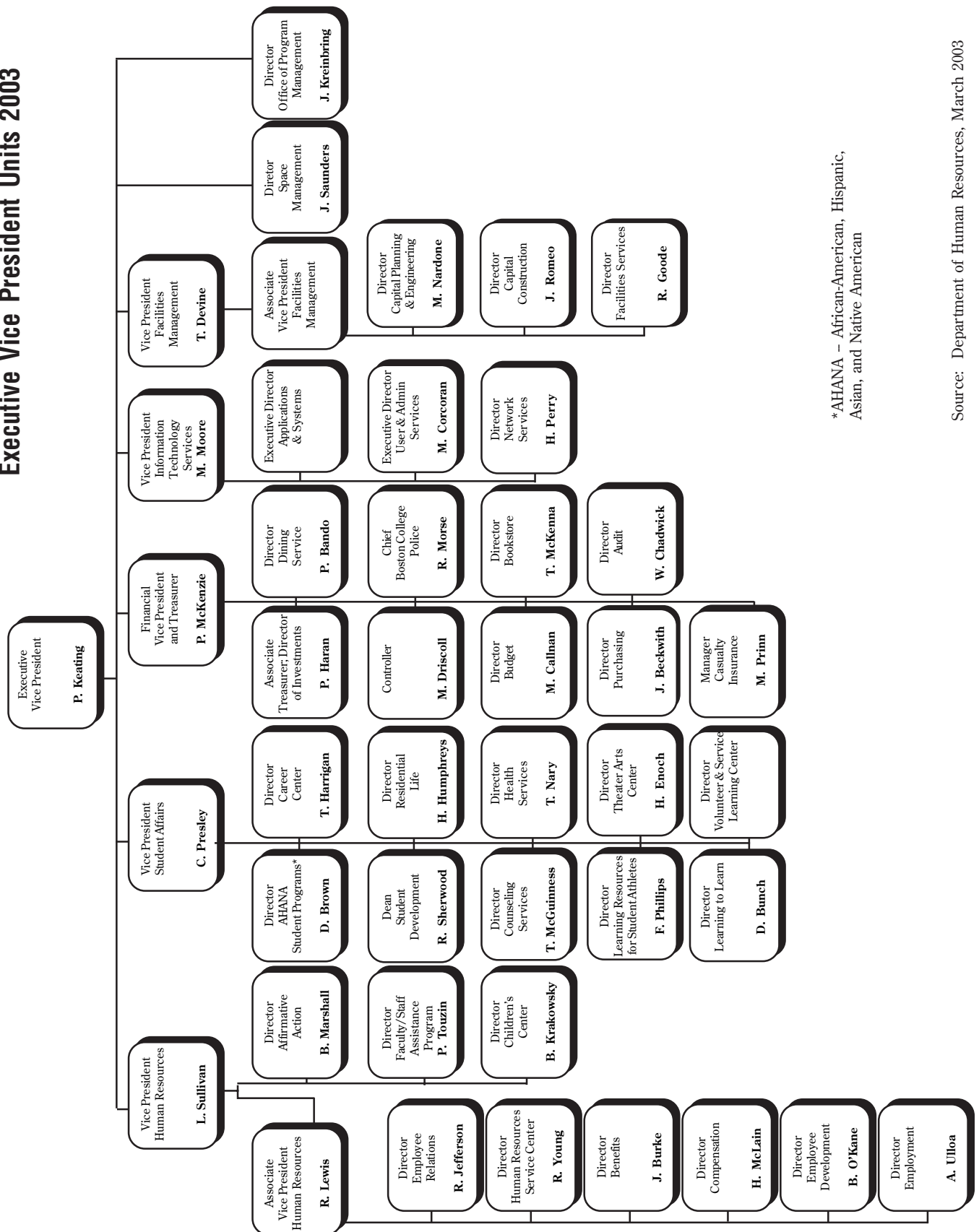
Boston College Academic Vice President Units 2003



*TIMSS - Trends in International Mathematics and Science Study
 PIRLS - Progress in International Reading Literacy Study

Source: Department of Human Resources, March 2003

Boston College Executive Vice President Units 2003



*AHANA - African-American, Hispanic, Asian, and Native American

University Administrators

Fall 2002

Academic Development Center
Suzanne M. Barrett, Director

Undergraduate Admission
John L. Mahoney, Jr., Director

AHANA Student Programs
Donald Brown, Director

Alumni Association
Grace Cotter-Regan, Executive Director

Athletics
Eugene B. DeFilippo, Jr., Director

Audit
William E. Chadwick, Director

Boisi Center for Religion and American Public Life
Alan Wolfe, Director

Bookstore
Thomas McKenna, Director

Budget
Michael T. Callnan, Director

Campus Ministry
James D. Erps, S.J., Director

Campus School
Philip A. DiMattia, Director

Capital Projects Management
Thomas M. Bruni, Director

Career Center
Theresa A. Harrigan, Director

Community Affairs
Jean S. McKeigue, Director

Compliance and Intellectual Property Management
Stephen Erickson, Director

Continuing Education, School of Nursing
W. Jean Weyman, Director

Controller
Michael J. Driscoll

Center for Corporate Citizenship
Brad Googins, Director

University Counseling Services
Thomas P. McGuinness, Director

Development - Advancement Services
Robert G. Millar, Associate Vice President

Development - Leadership Gifts and School Liaison
Marianne Lord, Associate Vice President

Development - Principal Gifts
Terrance E. Granahan, Senior Director

Dining Service
Patricia A. Bando, Director

Environmental Health and Safety
Keith D. Kidd, Director

Facilities Services
Roger S. Goode, Jr., Director

Financial Strategies
Bernard A. Pekala, Director

First Year Experience
Rev. Joseph P. Marchese, Director

University General Counsel
Joseph Herlihy, Esquire

Governmental and Community Affairs
Thomas J. Keady, Jr., Associate Vice President

Health Services
Thomas I. Nary, M.D., Director

Honors Program, Carroll School of Management
David R. McKenna, Director

Honors Program, College of Arts & Sciences
Mark F. O'Connor, Director

University Historian
Thomas H. O'Connor

Human Resources
Robert J. Lewis, Associate Vice President

Human Resources - Affirmative Action
Barbara Marshall, Director

Human Resources - Benefits
John R. Burke, Director

Human Resources - Compensation
Halley McLain, Director

Human Resources - Children's Center
Barbara A. Krakowsky, Director

Human Resources - Employee Relations
Richard P. Jefferson, Director

Human Resources - Employee Development
Bernard R. O'Kane, Director

Human Resources - Employment
Anita Ulloa, Director

Human Resources - Faculty/Staff Assistance Program
Patricia A. Touzin, Director

Human Resources Service Center
Richard M. Young, Director

Center for Ignatian Spirituality
Julio Giulietti, S.J., Director

Information Technology - Network Services
Henry Perry, Director

Information Technology - User & Administrative Services
Mary Corcoran, Executive Director

Center for International Studies
Marian St. Onge, Director

Irish Programs
Thomas E. Hachey, Executive Director

Jesuit Institute
T. Frank Kennedy, S.J., Director

Law School Institutional Advancement
Alfred A. Blum, Director

Learning to Learn
Dan Bunch, Director

Learning Resources for Student Athletes
Ferna L. Phillips, Director

Office of Marketing Communications
Ben Birnbaum, Executive Director and Special Assistant to the President

McMullen Museum of Art
Nancy D. Netzer, Director

Media Technology Services
Yoshio Saito, Director

Boston College Neighborhood Center
Maria S. DiChiappari, Director

Center for Nursing Research
Mary E. Duffy, Director

Boston College Police
Robert A. Morse, Chief

University Policies & Procedures
Ivy Dodge, Director

Public Affairs
John B. Dunn, Director

Purchasing
John D. Beckwith, Director

Institute of Religious Education and Pastoral Ministry
Mary Ann Hinsdale, I.H.M., Director

Research and Instructional Technology Services
Ted Gaiser, Director

Residential Life
Henry J. Humphreys, Director

Institute for Scientific Research
Leo F. Power, Jr., Director

Small Business Development Center
John McKiernan, Director

Social Welfare Research Institute
Paul G. Schervish, Director

Space Management
Joyce C. Saunders, Director

Office for Sponsored Programs
John N. Carfora, Director

Student Development
Robert A. Sherwood, Dean

Student Services
Louise M. Lonabocker, Director

Technology Consultants
Raymond Rivera, Director

Theater Arts Center
Howard Enoch, Director

Associate Treasurer
Paul P. Haran, Associate Treasurer and Director of Investments

Weston Observatory
John E. Ebel, Director

Center for Work and Family
J. Bradley Harrington, Director

Source: Department of Human Resources

Professional, Administrative, and Support Staff Personnel By Gender, Fall 2002

	Full-Time Positions				Part-Time Positions				Total Positions
	Men	Women	Open	Total	Men	Women	Open	Total	
Professional, Administrative									
Dean of Faculties*	132	206	17	355	14	20	6	40	395
Student Affairs	34	51	4	89	17	21	3	41	130
Athletics	53	27	1	81	17	16	3	36	117
Information Technology	60	32	5	97	0	2	0	2	99
Financial Vice President**	56	42	8	106	1	2	0	3	109
University Relations	19	44	13	76	1	3	1	5	81
Campus Facilities	43	6	8	57	0	0	0	0	57
President***	38	19	3	60	3	1	0	4	64
Human Resources	9	25	1	35	0	0	1	1	36
Executive Vice President****	1	4	0	5	0	0	0	0	5
Total	445	456	60	961	53	65	14	132	1093
Secretarial, Clerical, Technical									
Secretarial/Clerical	53	311	30	394	5	63	12	80	474
Library Assistants	25	40	2	67	2	8	1	11	78
Technical, Other	42	6	2	50	4	2	2	8	58
Total	120	357	34	511	11	73	15	99	610
Facilities Services, Plant Services									
Dining Services	112	52	15	179	2	10	2	14	193
Housekeeping	102	44	7	153	0	0	0	0	153
Grounds & Trades	98	1	2	101	0	0	1	1	102
Gate Attendants, Police	46	8	2	56	10	5	3	18	74
Mailroom, Switchboard	11	3	0	14	2	2	0	4	18
Total	369	108	26	503	14	17	6	37	540
Total Positions	934	921	120	1975	78	155	35	268	2243

* Includes Student Services and Library professional and administrative staff.

** Includes Financial and Business Affairs, Bookstore, Boston College Police, Bureau of Conferences, and Dining Services.

*** Includes Office of the President, Office of the Senior Vice President, Mission and Ministry, Marketing Communications, Public Affairs, University General Counsel, University Policy and Procedures, BC Neighborhood Center, State and Community Affairs, University Historian, University Secretary, and all Executives.

**** Includes Space Management and the Office of Program Management.

Note: The above figures represent all permanent positions funded by the University as of October 1, 2002.

Restricted Funded Personnel* By Gender and FTE, Fall 2002

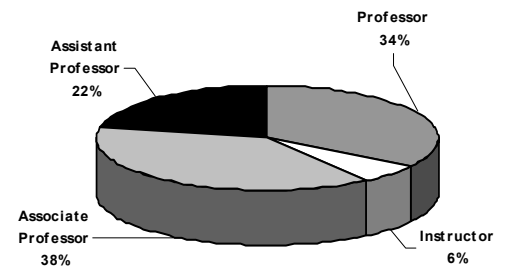
	Full-Time Positions				Part-Time Positions				Total Positions	Total FTE
	Men	Women	Total	FTE	Men	Women	Total	FTE		
Full-time Professional	73	76	149	149.00	0	0	0	0.00	149	149.00
Full-time Faculty	0	2	2	2.00	0	0	0	0.00	2	2.00
Secretarial-Clerical	0	7	7	7.00	0	1	1	0.23	8	7.23
Part-time Admin/Faculty	0	0	0	0.00	8	19	27	14.73	27	14.73
Research Assistants	7	19	26	26.00	0	7	7	2.93	33	28.93
Total Positions	80	104	184	184.00	8	27	35	17.89	219	201.89

*Incremental restricted funded positions supported entirely by Contract & Grant, Endowment or Restricted Gift funding as of October 1, 2002.

Faculty by School and Rank*

2001-2002

School	Professor		Associate		Assistant		Instructor		Total	
	No.	%	No.	%	No.	%	No.	%	No.	%
Arts & Sciences	147	37	145	37	85	22	18	5	395	100
Education	22	38	20	33	17	28	1	1	60	100
Law	21	47	19	42	5	11	-	-	45	100
Management	24	25	35	37	28	29	9	9	96	100
Nursing	7	16	21	48	6	14	10	10	44	100
Social Work	4	25	9	45	4	20	3	3	20	100
Total	225	34	249	38	145	22	41	6	660	100



* Includes all full-time regular faculty members.

Source: Office of the Academic Vice President

Full-Time Equivalent Faculty by School*

2001-2002

School	FTE of Full-Time Faculty		FTE of Part-Time Faculty		FTE of Teaching Fellows & Assistants		Total FTE Faculty	
	No.	%	No.	%	No.	%	No.	%
Arts & Sciences	361.20	60	105.33	57	118.33	80	584.86	62
Education	52.50	9	26.00	14	24.00	16	102.50	11
Law	46.00	7	8.33	5	-	-	54.33	6
Management	91.50	15	16.66	9	-	-	108.16	12
Nursing	39.00	6	4.00	2	6.00	4	49.00	5
Social Work	16.50	3	24.00	13	-	-	40.50	4
Total	606.70	100	173.25	100	148.33	100	939.35	100

* Method of computation: three courses equal one full-time faculty member.

Note: Figures representing full-time faculty do not include the following: full-time academic administrators or directors; teaching fellows; special contracts; part-time academic administrators or staff.

Source: Office of the Academic Vice President

Faculty by School and Gender

2001-2002

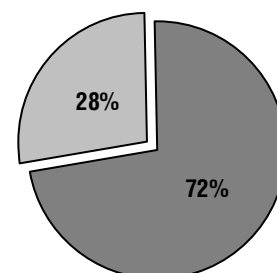
School	Women		Men		Total No.	%	
	No.	%	No.	%		Women	Men
Arts & Sciences	111	49	284	68	395	28	72
Education	29	13	31	7	60	48	52
Law	17	9	28	6	45	38	62
Management	24	11	72	16	96	25	75
Nursing	43	20	1	-	44	98	2
Social Work	7	3	13	3	20	35	65
Total	231	100	429	100	660		

Source: Office of the Academic Vice President

Faculty by School and Tenure Status 2001-2002

School	Tenured Faculty		Non-Tenured Faculty		Total	
	No.	%	No.	%	No.	%
Arts & Sciences	292	73	103	27	395	100
Education	42	67	18	33	60	100
Law	40	67	5	33	45	100
Management	59	60	37	40	96	100
Nursing	28	64	16	36	44	100
Social Work	13	65	7	35	20	100
Total	474		186		660	

Source: Office of the Academic Vice President



■ Tenured Faculty
□ Non-Tenured Faculty

Faculty by Highest Earned Degree and Rank 2001-2002

Degree	Professor		Associate		Assistant		Instructor		Total	
	No.	%	No.	%	No.	%	No.	%	No.	%
Doctorate	236	100	258	98	127	96	14	50	635	96
Masters	-	-	6	2	5	4	14	50	25	4
Total	236	100	264	100	132	100	28	100	660	100

Source: Office of the Academic Vice President

**96% of Boston College
Faculty Members hold a
Doctoral Degree.**

**35% of Boston College
Faculty Members
are Women.**

Faculty by Highest Earned Degree and Gender 2001-2002

Degree	Women		Men		Total	
	No.	%	No.	%	No.	%
Doctorate	221	94	414	97	635	96
Masters	13	7	12	3	25	4
Total	234	100	426	100	660	

Source: Office of the Academic Vice President

Faculty by Rank and Gender 2001-2002

Rank	Women		Men		Total	
	No.	%	No.	%	No.	%
Professor	51	22	174	40	225	34
Associate	89	39	160	37	249	38
Assistant	67	29	78	18	145	22
Instructor	23	10	18	4	41	6
Total	230	100	430	100	660	100

Source: Office of the Academic Vice President

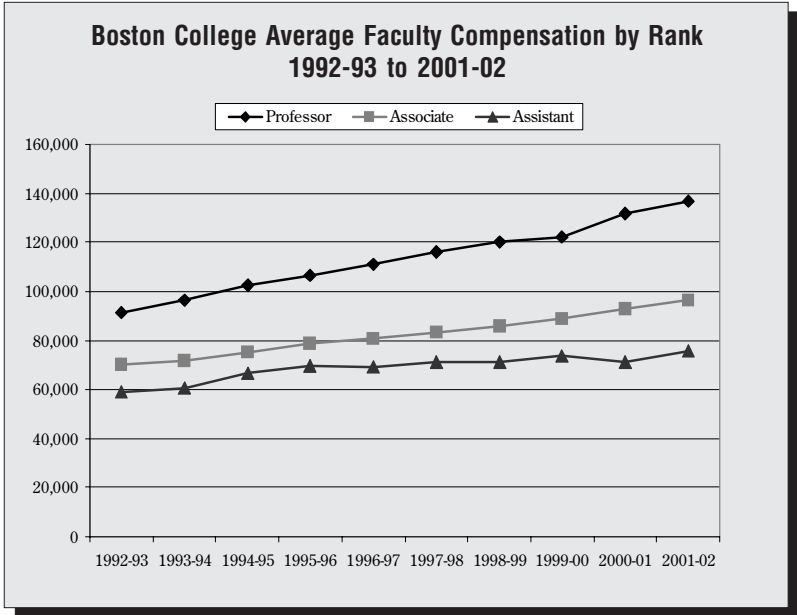
Full-Time Faculty, Teaching Fellows, and Teaching Assistants By School and Department, 2001-2002

	Full-Time Faculty	Teaching Fellows	Teaching Assistants
Arts & Sciences			
Biology	20	-	24
Chemistry	18	-	43
Classics	4	-	-
Communication	16	-	-
Economics	24	13	9
English	42	26	-
Fine Arts	16	-	-
Geology	9	-	12
Germanic Studies	3	-	-
History	37	7	29
Honors Program	10	-	-
Mathematics	22	4	7
Music	4	-	-
Philosophy	29	24	-
Physics	12	-	22
Political Science	21	2	5
Psychology	19	2	7
Romance Languages	21	35	-
Slavic & Eastern Languages	4	-	1
Sociology	20	11	16
Theater	5	-	-
Theology	39	10	23
Total Arts & Sciences	395	134	198
Education	60	36	36
Law	45	-	-
Management	96	-	-
Nursing	44	15	3
Social Work	20	-	-
Total	660	185	237

Source: Office of the Academic Vice President

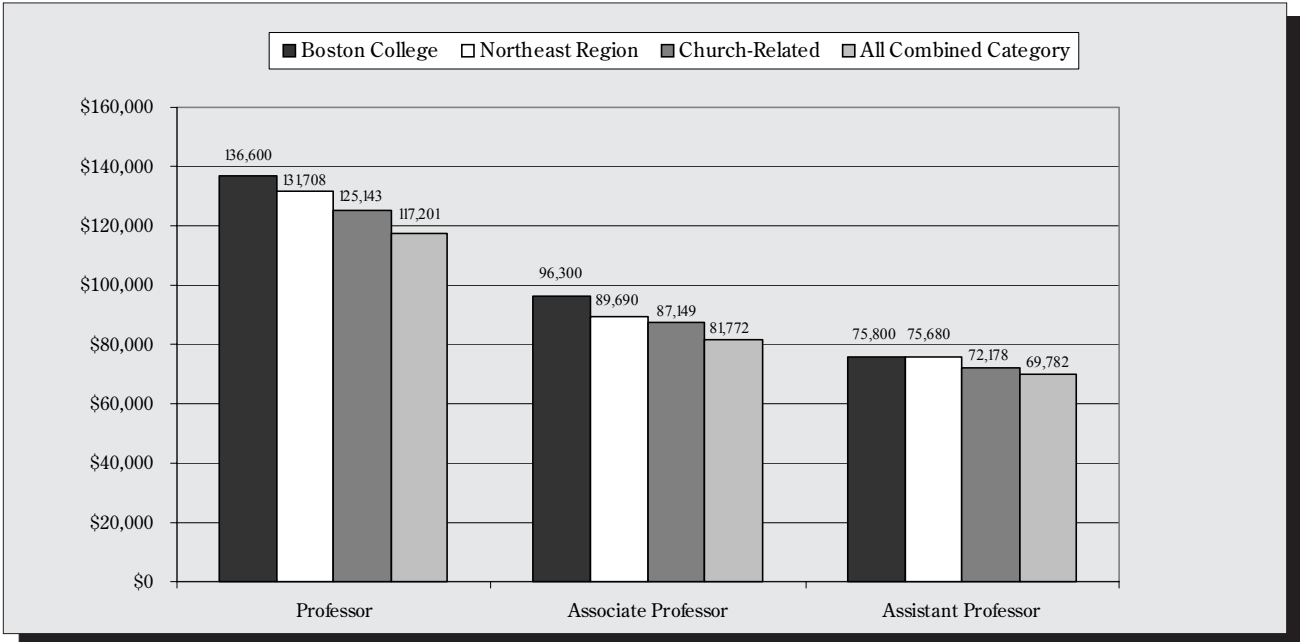
Faculty Compensation
Average by Rank*

Year	Professor	Associate	Assistant
1992-93	91,300	70,000	59,000
1993-94	96,400	71,700	60,400
1994-95	102,300	75,200	66,400
1995-96	106,700	78,500	69,800
1996-97	111,100	80,700	69,000
1997-98	115,900	83,400	71,400
1998-99	120,000	85,800	71,300
1999-00	122,387	88,815	73,542
2000-01	131,800	92,700	71,300
2001-02	136,600	96,300	75,800



* Includes salary and fringe benefits.
Source: Office of the Academic Vice President

Faculty Compensation by Rank*
Boston College Average Compared to AAUP Category I (9-Month Equivalent), 2001-2002



* Includes salary and fringe benefits.
Source: Office of the Academic Vice President