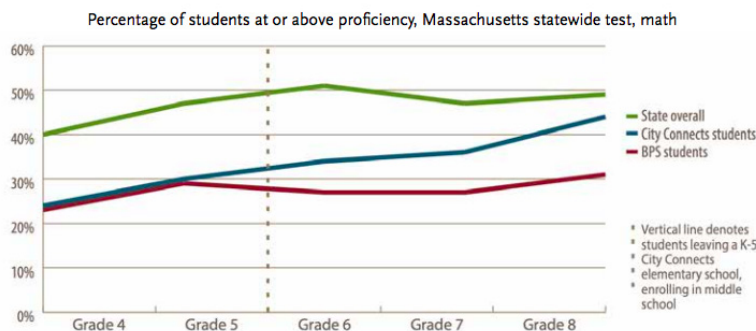
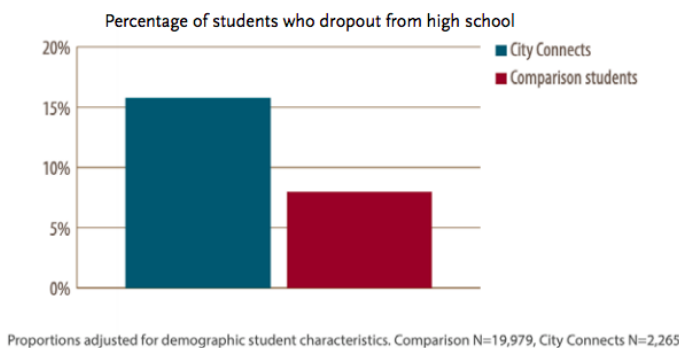


Students who received City Connects in elementary school (grades K-5) demonstrated on the 8th grade statewide test that they **closed about two-thirds of achievement gaps in Math, and half of the achievement gap in English Language Arts** compared to their peers who did not receive City Connects support in elementary school.

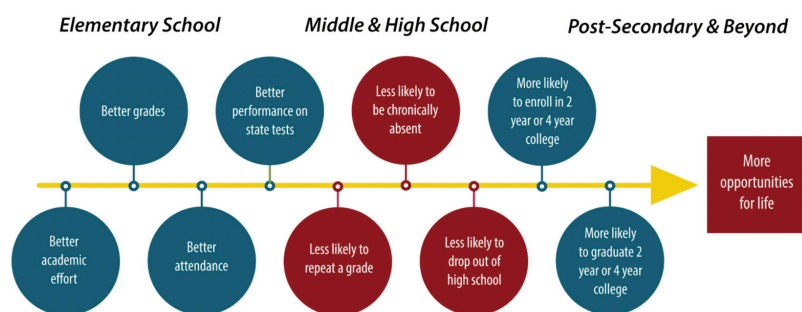


Students who received City Connects in elementary school were approximately **half as likely to drop out of high school** than their peers who did not receive City Connects. **These findings hold for Black and Latino boys.**



Students who received City Connects in elementary school were **more likely to enroll in and complete post-secondary programs.**

Here is a summary of findings about City Connects’ impact on outcomes:



References:

Walsh, M. E., Madaus, G. F., Raczek, A. E., Dearing, E., Foley, C., An, C., Lee-St. John, T. J., & Beaton, A. (2014). A new model for student support in high-poverty urban elementary schools: Effects on elementary and middle school academic outcomes. *American Educational Research Journal*, 51(4), 704-737. <https://doi.org/10.3102/0002831214541669>

City Connects. (2016). *The impact of City Connects: Student outcomes progress report 2016*. Center for Thriving Children. <https://www.bc.edu/content/dam/files/schools/foe/cityconnects/pdf/City%20Connects%20Progress%20Report%202016.pdf>

Lee-St. John, T. J., Walsh, M. E., Raczek, A. E., Valleumier, C. E., Foley, C., Heberle, A., Sibley, E., & Dearing, E. (2018). The long-term impact of systemic student support in elementary school: Reducing high school dropout. *AERA Open*, 4(4), 1-16. <https://doi.org/10.1177/2332858418799085>

Walsh, M. E., Lee-St. John, T. J., Raczek, A. E., Valleumier, C. E., Foley, C., & Theodorakakis, M. (2017). Reducing high school dropout through elementary school student support: An analysis including important student subgroups [Policy Brief]. Center for Thriving Children. <https://www.bc.edu/content/dam/bc1/schools/foe/sites/foe/coss/pdfs/Dropout%20Policy%20Brief%202017.pdf>

City Connects. (2020). *City Connects Intervention & impact progress report 2020*. Center for Thriving Children. <https://www.bc.edu/content/dam/bc1/schools/foe/sites/foe/coss/City%20Connects%20Progress%20Report%202020.pdf>

Pollack, C., Lawson, J. L., Raczek, A. E., Dearing, E., Walsh, M. E., & Kaufman, G. (2020, January 21). Long-term effects of integrated student support: An evaluation of an elementary school intervention on postsecondary enrollment and completion. <https://doi.org/10.35542/osf.io/byadw>

