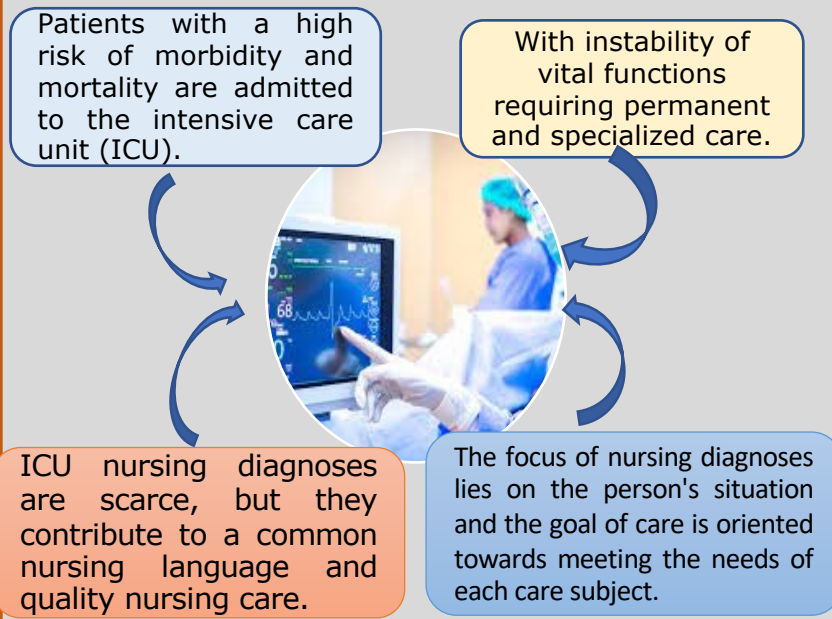


# INTRODUCTION



**The purpose** of the study is to determine the taxonomy of Nursing diagnoses with NOC and NIC in the Intensive Care Unit of a Public Institution in Trujillo, Peru.

**Methodology:** Quantitative, it was carried out with 85 patients, from the intensive care unit, for which the Nursing Assessment and Monitoring (VME) documents of patients with different pathologies in critical condition and who remained more than two days, during the months of January to September 2022, documents with non-readable handwriting were excluded.

## Prioritizing the taxonomy of Nursing diagnoses with the NOC and NIC in the Intensive Care Unit in a Public Health Institution. Trujillo-Peru.

Yrene Esperanza Urbina Rojas(1), Yda Mercedes Hoyos Álvarez (2), Lilia Jannet Sandoval Saldarriaga (1), Henry Alejandro Silva Marchan (1), Zoraida Esther Pérez Chore (1), Gilmara Holanda da Cunha(3), Francisca Elisângela Teixeira Lima(3).

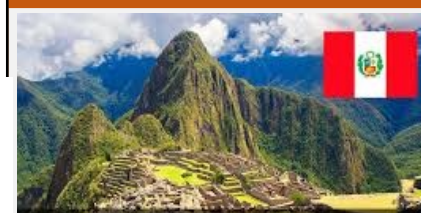
1) Principal Professor at Tumbes State University - yurbina@untumbes.edu.pe

2) Hospital of Trujillo

3) University Federal of Ceará

## RESULTS

Taxonomy of Nursing Diagnosis	Classification of Nursing Outcomes and Classification of Nursing Intervention					
	NOC		NIC		TOTAL	
	N	% Accumulated	N	% Accumulated	N	% Accumulated
DOMAIN 1: HEALTH PROMOTION	4	21.05	15	78.95	19	100.0
DOMAIN 2: NUTRITUIÓN	21	38.46	44	61.54	65	100.0
DOMAIN 3: ELIMINATION AND EXCHANGE	30	65.96	17	38.46	47	100
DOMAIN 4: ACTIVITY/REST	31	26.27	87	73.73	118	100
DOMAIN 5: PERCEPTION/COGNITION	16	44.44	20	55.56	36	100
DOMAIN 6: SELF-PERCEPCIÓN	14	38.89	22	61.11	36	100
DOMAIN 7: ROLE RELATIONS	7	33.33	14	66.67	21	100
DOMAIN 8: SEXUALITY	14	41.67	10	58.33	24	100
DOMAIN 9: STRESS COPING/TOLERANCE	53	41.73	74	58.27	127	100
DOMAIN 11: SAFETY PROTECTION	47	31.91	94	68.09	141	100
DOMAIN 12: COMFORT	7	43.75	9	56.25	16	100



## Conclude

That the prioritization of nursing diagnoses with the results and Nursing interventions in intensive care units are the taxonomy of the domain No 11, related to physical injury or damage and the absence of danger, to the critically ill patient, while those that are least used or prioritized are from Domain No 12 related to Comfort.

## Key words

Nursing diagnoses, Security/Protection and intensive care unit.

## References

-NANDA INTERNATIONAL. Nursing Diagnoses: Definitions and Classification 2021-2023.

-NANDA INTERNATIONAL. Nursing Diagnoses: Definitions and Classification 2018-2020

Butcher H., Bulechek, G, Dochterman J y Wagner Ch. Clasificación de intervenciones de Enfermería (NIC).6ta Ed. Barcelona:ELSEVIER; 2019.

Moorhead S, Swanson E, Johnson M, y Maas M. Clasificación de Resultados de Enfermería (NOC).7ma Ed.Barcelona:ELSEVIER; 2019.

