

## Admissions

Instructions for Completing the Online Application on a Macintosh (*page 1 of 2*)

1. Begin by checking that you have the most current version of Adobe Reader installed on your computer (do not use other PDF viewers such as Apple's Preview application). Follow the link to the right to download **Adobe Reader** online for free.
2. On the GSSW Online Application webpage, download the online application by holding down the **Control** key on your keyboard while clicking on the application link. Select "**Download Linked File As...**" and in dialogue box the appears, chose a location to save the application. Click **Save**.
3. Locate and open **Adobe Reader** on your computer.
4. In **Adobe Reader**, select the **File** menu and click "**Open...**".

Download the current version of Adobe Reader online for free at the following address:

<http://get.adobe.com/reader>

### Start the Application:

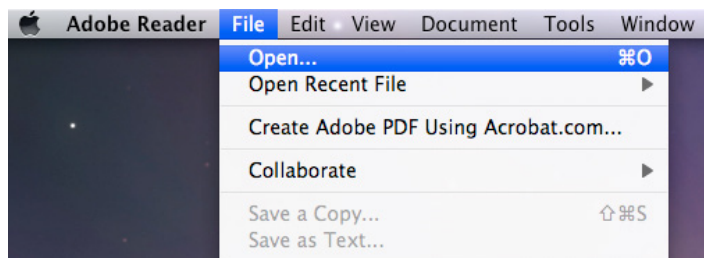
You may start your application by selecting the PDF file link below.

**BCGSSWApp.pdf**

- Open Link in New Window
- Open Link in New Tab
- Download Linked File
- Download Linked File As...**
- Add Link to Bookmarks...
- Copy Link



Adobe Reader

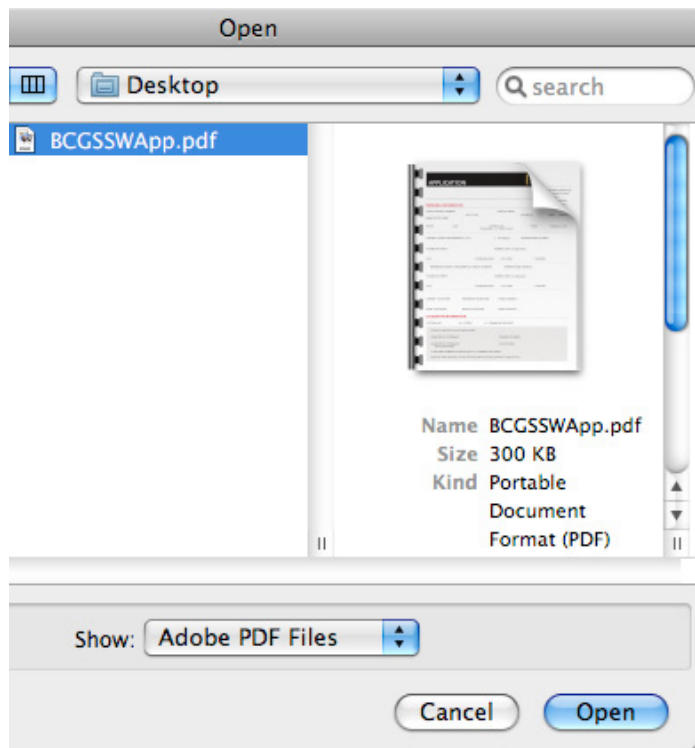


Continued on next page (page 2 of 2)...

## Admissions

### Instructions for Completing the Online Application on a Macintosh (*page 2 of 2*)

5. In the Open dialogue box that appears, locate the online application that you downloaded in step 2 and click “**Open**”.



6. Complete the Online Application in Adobe Reader. When you are finished filling in all the required fields, click **Print Application** to print a copy for your records, then click **Submit Application** to electronically submit your application to Boston College.

7. For additional application technical support, visit the GSSW website or call our office.

\*I certify that the information filled out in this online form is complete and accurate. I understand that the material submitted with this application will be used for admissions selection and/or by faculty for academic and field work planning. I also understand that if enrollment is full when my application is complete, it will be considered for the waiting list.

I understand that applicants with a criminal record should be aware that many human service agencies require a Criminal Offender Record Information report (CORI) on students who apply to their agencies for field placements. A positive CORI (a report that reveals a criminal history) may preclude the student from many potential field placements and may severely limit the field placements available to the student. The School cannot guarantee field placements (a requirement for completion of the MSW degree) for students with a positive CORI. Similarly, application for social work licensure will request information as to whether or not the applicant has been convicted of a felony or misdemeanor in any U.S. or foreign jurisdiction, other than a traffic violation for which a fine of less than \$100.00 was assessed.

STEP # 1: PRINT A COPY FOR YOUR RECORDS

**Print Application**

STEP #2: SUBMIT FORM TO GRADUATE ADMISSIONS

**Submit Application**

### Contact GSSW Admissions:

Phone: 617-552-4024

Email: [swadmit@bc.edu](mailto:swadmit@bc.edu)

Online: <http://www.bc.edu/gsswadmissions>