

## BOARD OF TRUSTEE MEMBERSHIP 2006-2007

**Gregory P. Barber, '69**

Former Chairman  
Gregory P. Barber & Associates, Inc.

**Peter W. Bell, '86**

Venture Partner  
Highland Capital Partners

**Patrick Carney, '70**

Chairman and Chief Executive Officer  
Claremont Companies

**Charles I. Clough, Jr., '64**

Chairman and Chief Executive Officer  
Clough Capital Partners

**Kathleen A. Corbet, '82**

President  
Standard and Poor's

**\*Robert F. Cotter, '73**

Former President and Chief Operating Officer  
Starwood Hotels and Resorts Worldwide, Inc.

**Robert M. Devlin**

Chairman  
Curragh Capital Partners

**Francis A. Doyle, '70, M.B.A. '75**

President and Chief Executive Officer  
Connell Limited Partnership

**Cynthia Lee Egan, '78**

Executive Vice President  
FRM Corp.

**John F. Fish**

President and Chief Executive Officer  
Suffolk Construction Company

**Keith A. Francis, '76**

Senior Intelligence Analyst  
Department of Justice

**Mario J. Gabelli**

Chairman and Chief Investment Officer  
GAMCO Investors, Inc.

**\*William J. Geary, '80**

Partner  
North Bridge Venture Partners

**Susan McManama Gianinno, '70**

Chairman and CEO  
Publicis USA

**Mary J. Steele Guilfoile, '76**

Chairman  
MG Advisors, Inc.

**Kathleen Powers Haley, '76**

Manager  
Snows Hill Management

**\*Paul F. Harman, S.J., '61, M.A. '62**

Rector of the Jesuit Community  
Boston College

**Daniel J. Harrington, S.J., '64, M.A. '65**

Professor of New Testament  
Weston Jesuit School of Theology

**Robert K. Kraft**

Chairman and Chief Executive Officer  
The Kraft Group

**John L. LaMattina, '71**

President, Global Research & Development  
Pfizer Incorporated

**Robert B. Lawton, S.J.**

President  
Loyola Marymount University

**\*William P. Leahy, S.J.**

President  
Boston College

**Peter S. Lynch, '65, LL.D. '95 (Hon.)**

Vice Chairman  
Fidelity Management and Research Company

**Peter K. Markell, '77**

Vice President of Finance  
Partners HealthCare System, Inc.

**Kathleen M. McGillicuddy, '71 (Newton College)**

Former Executive Vice President  
FleetBoston Financial

**\*Robert J. Morrissey, Esq., '60**

Partner  
Morrissey, Hawkins & Lynch

**\*R. Michael Murray, Jr., '61, M.A. '65**

Member, McKinsey Advisory Committee  
McKinsey & Company, Inc.

**Thomas P. O'Neill III, '68**

Chief Executive Officer  
O'Neill and Associates

**Brian G. Paulson, S.J.**

President  
St. Ignatius College Prep

**Scott R. Pilarz, S.J.**

President  
University of Scranton

**Sally Engelhard Pingree**

Director and Vice Chairman  
Engelhard Hanovia, Inc.

**Paula D. Polito, '81**

Senior Vice President  
Global Private Client  
Merrill Lynch

**R. Robert Popeo, Esq., J.D. '61**

Chairman and President  
Mintz, Levin, Cohn, Ferris, Glovsky & Popeo, P.C.

**Richard F. Powers III, '67**

Advisory Director (Ret.)  
Morgan Stanley

**Pierre-Richard Prosper, '85**

Former U.S. Ambassador-at-Large for War Crimes

U.S. Department of State

**Thomas F. Ryan, Jr., '63**

Retired, Private Investor

**\*Rev. Nicholas A. Sannella, '67**

Pastor  
Immaculate Conception Parish

**Bradley M. Schaeffer, S.J., M.Ed. '73**

Rector of the Weston Jesuit School of Theology

**Susan Martinelli Shea, '76**

Special Education Teacher  
Tredyffrin/Easttown Middle School

**\*Marianne D. Short, Esq., '73**

**(Newton College), J.D. '76**

Managing Partner  
Dorsey & Whitney LLP

**\*Patrick T. Stokes, '64**

President and Chief Executive Officer  
Anheuser-Busch Companies, Inc.

**Richard F. Syron, '66, L.D. '89 (Hon.)**

Chairman and Chief Executive Officer  
Freddie Mac

**\*Benaree P. Wiley**

President and Chief Executive Officer (Emeritus)  
The Partnership, Inc.

**Blenda J. Wilson**

President and Chief Executive Officer  
Nellie Mae Education Foundation

**Robert L. Winston, '60**

Senior Vice President (Ret.)  
American Funds Distributor

Note: Only Boston College degrees listed  
\* Executive Committee Member  
Source: President's Office

## TRUSTEE ASSOCIATE MEMBERSHIP 2006-2007

**Mary Jane Vouté Arrigoni**  
Greenwich, CT

**Geoffrey T. Boisi, '69**  
Chairman and Senior Partner  
Roundtable Investment Partners LLC

**Wayne A. Budd, Esq., '63**  
Senior Counsel  
Goodwin Procter LLP

**Denis H. Carroll, '64**  
Chairman and Chief Executive Officer  
Holden Industries, Inc.

**Darcel D. Clark, '83**  
Supreme Court Justice  
State of New York

**James F. Cleary, '50, D.B.A. '93 (Hon.)**  
Advisory Director  
UBS

**Christopher S. Collins, S.J.**  
Weston Jesuit School of Theology

**John M. Connors, Jr., '63**  
Chairman  
Hill, Holliday, Connors, Cosmopolos,  
Inc.

**Joseph E. Corcoran, '59**  
Chairman  
Corcoran Jennison Companies

**John F. Cunningham, '64**  
Chairman and Chief Executive Officer  
Cunningham and Company

**Brian E. Daley, S.J.**  
Professor, Department of Theology  
University of Notre Dame

**Andrew N. Downing, S.J.**  
Weston Jesuit School of Theology

**Emilia M. Fanjul**  
Boston College Parent

**John F. Farrell, Jr.**  
Chairman  
Automatic Service Company

**Yen-Tsai Feng**  
Roy E. Larsen Librarian (Ret.)  
Harvard College

**Charles D. Ferris, Esq., '54, J.D. '61, LL.D. '78 (Hon.)**  
Senior Partner  
Mintz, Levin, Cohn, Ferris, Glovsky &  
Pope, P.C.

**Thomas J. Flanagan, '42**  
Chairman, President and  
Chief Executive Officer  
The Flanagan Group-Technology  
Consulting

**Thomas J. Flatley**  
President  
The Flatley Company

**Thomas J. Galligan, Jr., '41, D.B.A. '75 (Hon.)**  
Chairman and Chief Executive Officer  
(Ret.)  
Boston Edison Company

**John L. Harrington, '57, M.B.A. '66**  
President and Trustee  
Yawkey Foundation

**John J. Higgins, S.J., '59, M.A. '60, S.T.L. '67**  
Executive Assistant to the Provincial  
New England Province

**Richard T. Horan, '53**  
President  
Hughes Oil Company

**George W. Hunt, S.J.**  
Director, Archbishop Hughes Institute  
Fordham University

**Richard A. Jalkut, '66**  
President and Chief Executive Officer  
TelePacific Communications

**Anne P. Jones, Esq., '58, J.D. '61**  
Consultant

**Michael D. Jones, Esq., '72, J.D. '76**  
Senior Executive Vice President and  
Chief Administrative Officer  
National Association of Securities  
Dealers, Inc.

**Edmund F. Kelly**  
Chairman, President and  
Chief Executive Officer  
Liberty Mutual Group

**Judith B. Krauss, '68**  
Professor of Nursing & Health Policy  
Silliman College  
Yale University

**Catherine T. McNamee, C.S.J.,  
M.Ed. '55, M.A. '58**

**Robert A. Mitchell, S.J.**  
Superior  
America House

**John A. McNeice, Jr., '54, D.B.A. '97 (Hon.)**  
Chairman and Chief Executive Officer  
(Ret.)  
The Colonial Group, Inc.

**Giles E. Mosher, Jr., '55**  
Vice Chairman (Emeritus)  
Bank of America

**Robert J. Murray, '62**  
Chairman and Chief Executive Officer  
(Ret.)  
New England Business Service, Inc.

**Therese E. Myers, '66 (Newton College)**  
Chief Executive Officer  
Bouquet Multimedia, LLC

**Edward M. O'Flaherty, S.J., '59,  
Th.M. '66**  
Director, Office of Ecumenical and  
Interreligious Affairs  
Archdiocese of Boston

**Thomas D. O'Malley**

**John J. Powers, '73**  
Managing Director  
Goldman Sachs & Company

**Nicholas S. Rashford, S.J.**  
Professor  
St. Joseph's University

**Thomas J. Rattigan, '60**

**Randall P. Seidl, '85**  
Vice President and General Manager  
Sun Microsystems, Inc.

**John J. Shea, S.J., M.Ed. '70**  
Director  
Jesuit East Asia Assistancy Theological  
Encounter

**Sylvia Q. Simmons, M.Ed. '62, Ph.D. '90**  
President (Ret.)  
American Student Assistance  
Corporation

**Robert L. Sullivan, '50, M.A. '52**  
International Practice Director (Ret.)  
Peat, Marwick, Mitchell & Company

## TRUSTEE ASSOCIATE MEMBERSHIP 2006-2007 (Continued)

### Salvatore J. Trani

Executive Managing Director  
BGC Partners, L.P.

### Thomas A. Vanderslice, '53

Private Investor

### Jeffrey P. von Arx, S.J.

President  
Fairfield University

### Vincent A. Wasik

President  
MCG Global, LLC

Note: Only Boston College degrees listed  
Source: President's Office

## BOARD OF TRUSTEE CHAIRMEN

Cornelius W. Owens	1972-1975
Thomas J. Galligan, Jr.	1975-1978
James P. O'Neill	1978-1981
William F. Connell	1981-1984
David S. Nelson	1984-1987
Thomas A. Vanderslice	1987-1990
John M. Connors, Jr.	1990-1993
Geoffrey T. Boisi	1993-1996
Richard F. Syron	1996-1999
Charles I. Clough, Jr.	1999-2002
John M. Connors, Jr.	2002-2005
Patrick T. Stokes	2005-

## THE JESUIT COMMUNITY AT BOSTON COLLEGE

With 113 members, the Jesuit Community at Boston College is one of the largest communities in the Society of Jesus. Fifty-four Jesuits serve in the University as members of the administration, faculty, or staff, working either full-time or part-time. A number of Jesuits in the community also offer Ignatian retreats and spiritual direction to faculty, staff, and students. There are 27 Jesuits from more than 20 different countries around the world who are studying for graduate degrees at the University or who are here as visiting scholars.

The main community residence is St. Mary's Hall, but there are also five smaller communities around the perimeter of the campus. Eight Jesuits live in the student residence halls and the four Jesuits who staff St. Ignatius Parish are also part of the Boston College Jesuit Community. For further details, including a list of courses taught by Jesuits at Boston College, see the Jesuit Community Web page at <http://fmwww.bc.edu/SJ/>.

Source: Rector, Jesuit Community

## OFFICERS OF THE UNIVERSITY 2006-2007

### President

William P. Leahy, S.J.

### Chancellor

J. Donald Monan, S.J.

### Provost and Dean of Faculties

Cutberto Garza

### Executive Vice President

Patrick J. Keating

### Vice President for University Mission and Ministry

Joseph A. Appleyard, S.J.

### Vice President

Mary Lou DeLong

### Vice President for Facilities Management

Thomas Devine

### Secretary of the University

Joseph P. Duffy, S.J.

### Vice President for University Advancement

James J. Husson

### Vice President for Governmental & Community Affairs

Thomas J. Keady

### Senior Vice President

James P. McIntyre

### Financial Vice President and Treasurer

Peter C. McKenzie

### Vice President for Information Technology Services

Marian G. Moore

### Vice President and Special Assistant to the President

William B. Neenan, S.J.

### Vice President for Student Affairs

Cheryl L. Presley

### Vice President for Human Resources

Leo V. Sullivan

Source: Department of Human Resources

## ACADEMIC ADMINISTRATION 2006-2007

### Office of the Provost and Dean of Faculties

Cutberto Garza, Provost  
and Dean of Faculties

Patricia DeLeeuw, Vice Provost for  
Faculties

Kevin Bedell, Vice Provost for  
Research

J. Joseph Burns, Associate Academic  
Vice President for Undergraduate  
Programs

Rita R. Owens, Associate Academic  
Vice President

### Enrollment Management

Robert S. Lay, Dean

### The Woods College of Advancing Studies

James A. Woods, S.J., Dean

### The College of Arts and Sciences

Joseph F. Quinn, Dean

Mary Daniel O'Keefe, O.P., Associate  
Dean

Clare M. Dunsford, Associate Dean

William H. Petri, Associate Dean

Akua Sarr, Associate Dean

Barbara A. Viechnicki, Associate Dean  
for Finance and Administration

### The Graduate School of Arts & Sciences

Michael A. Smyer, Dean

Candace Hetzner, Associate Dean for  
Academic Affairs

Robert V. Howe, Associate Dean for  
Admission & Administration

### The Lynch School of Education

Joseph M. O'Keefe, S.J., Dean

M. Brinton Lykes, Associate Dean

John E. Cawthorne, Associate Dean of  
Undergraduate Student Services

Mary Ellen Fulton, Associate Dean for  
Finance, Research and  
Administration

Arline Riordan, Associate Dean of  
Graduate Student Services

### The Law School

John H. Garvey, Dean

Lawrence A. Cunningham, Associate  
Dean for Academic Affairs

Filippa M. Anzalone, Associate Dean  
for Library and Computing Services

Norah Wylie, Associate Dean for  
Students

Henry E. Clay, Associate Dean for  
Finance and Administration

Marianne E. Lord, Associate Dean for  
Institutional Advancement

### The Carroll School of Management

Andrew C. Boynton, Dean

Jeffrey Ringuest, Associate Dean  
(Graduate)

Richard E. Keeley, Associate Dean  
(Undergraduate)

Eugene F. McMahon, Associate Dean  
for Administration

### The Connell School of Nursing

Barbara Hazard, Dean

Patricia Tabloski, Associate Dean  
(Graduate)

Catherine E. Read, Associate Dean  
(Undergraduate)

Catherine M. Toran, Assistant Dean  
for Finance & Administration

### The Graduate School of Social Work

Alberto Godenzi, Dean

Thomas Walsh, Associate Dean &  
MSW Program Director

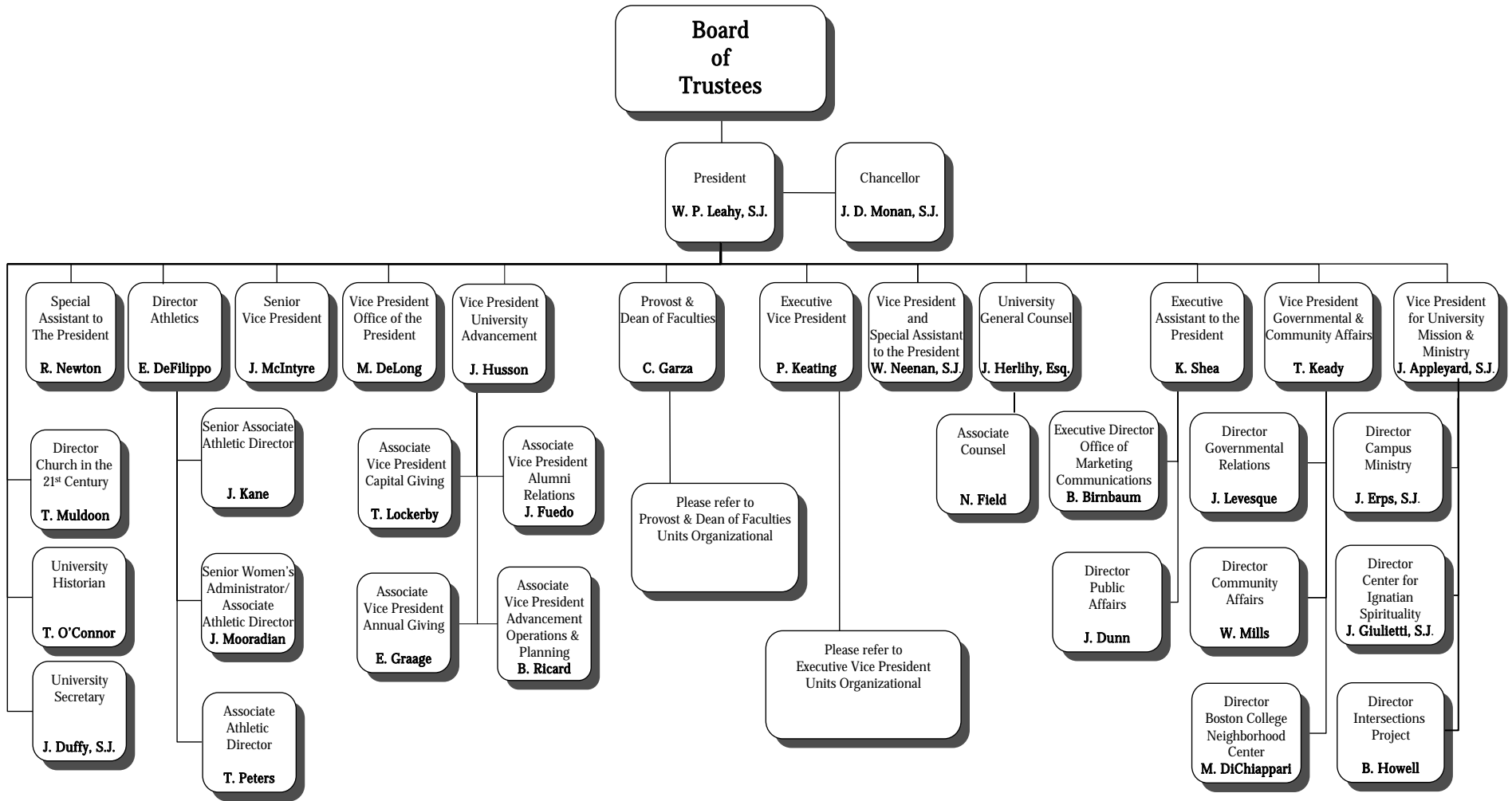
### The Summer Session

James A. Woods, S.J., Dean

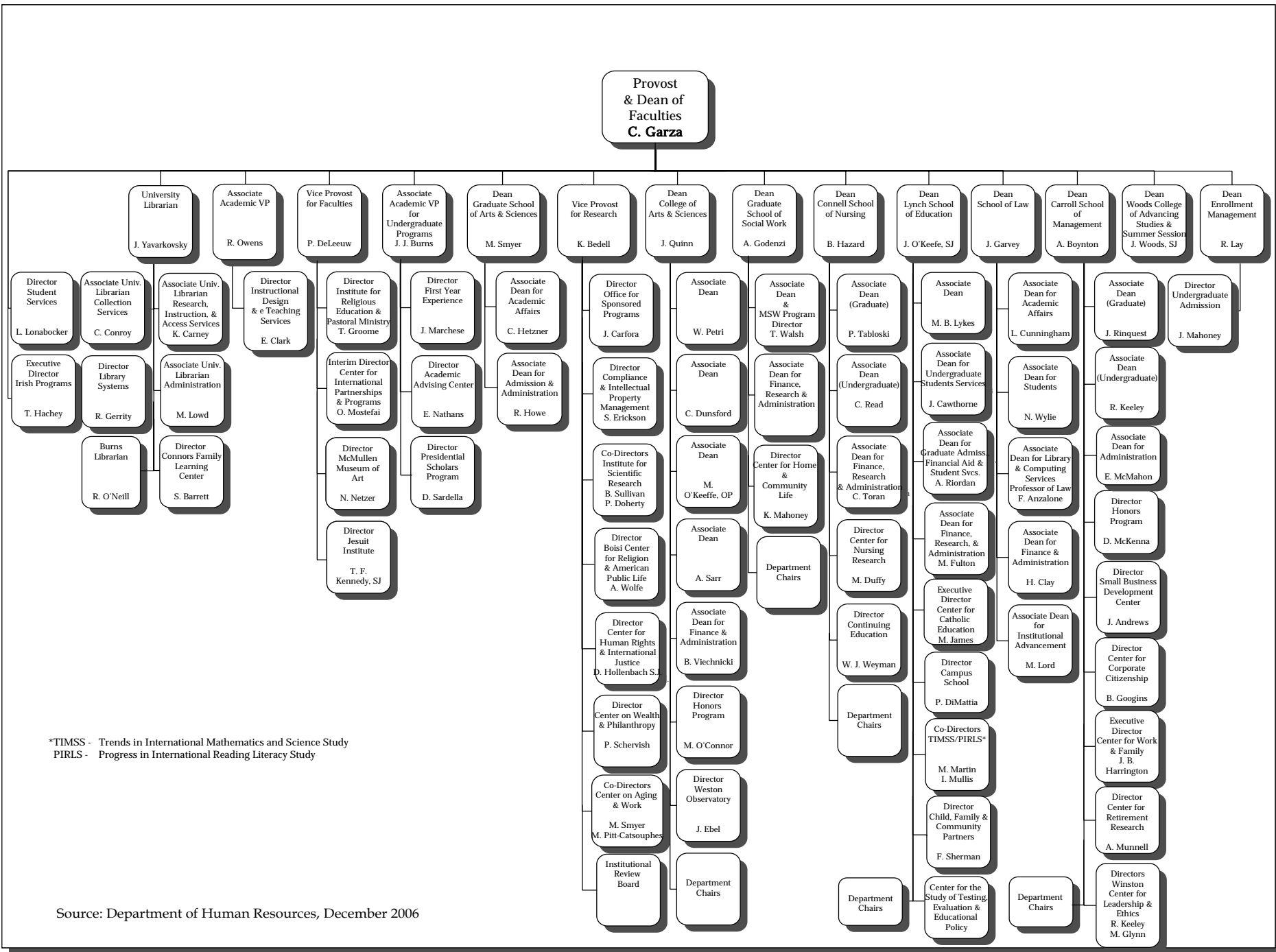
### University Libraries

Jerome Yavarkovsky, University  
Librarian

Source: Department of Human Resources

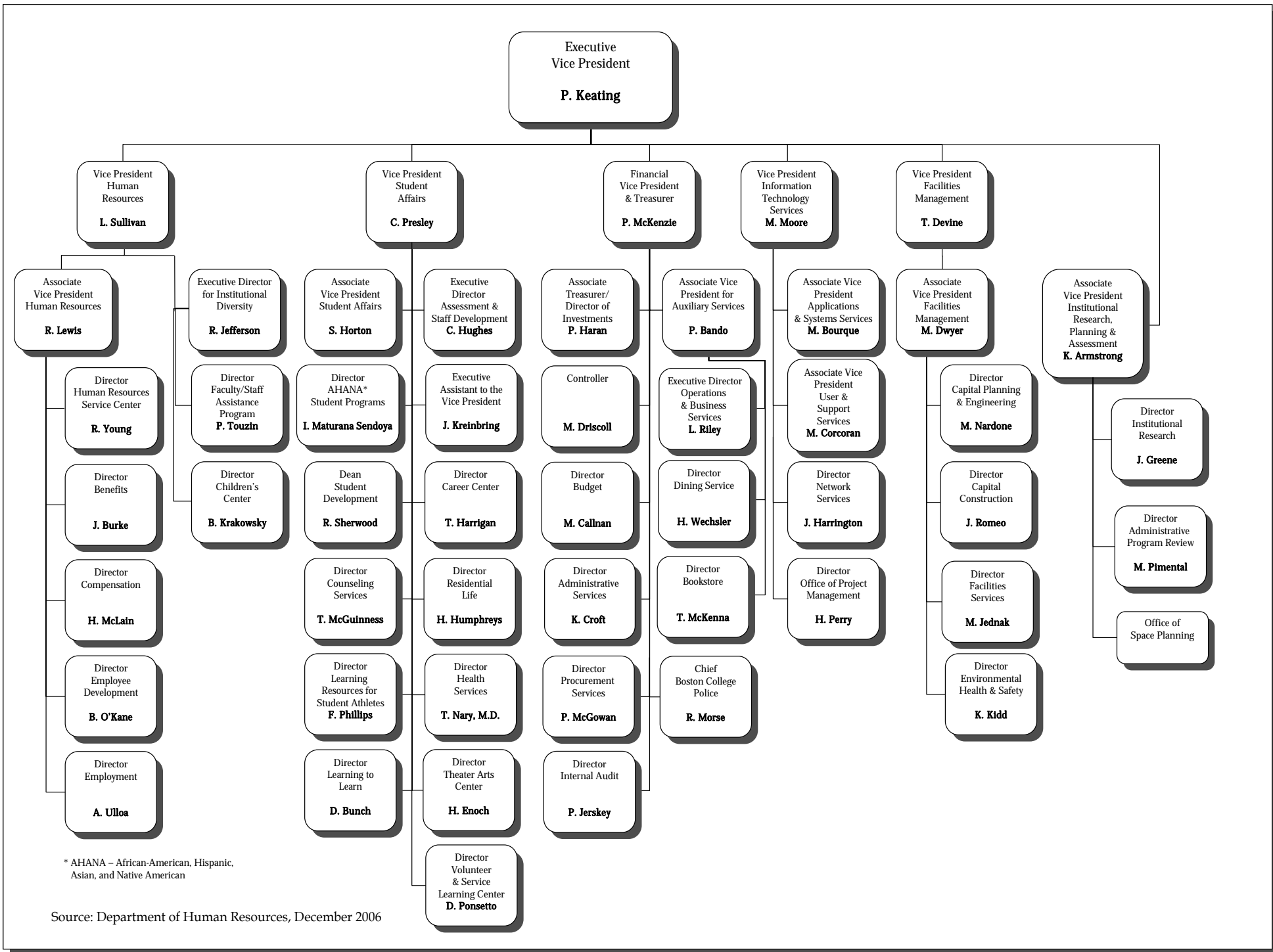


Source: Department of Human Resources, December 2006



\*TIMSS - Trends in International Mathematics and Science Study  
PIRLS - Progress in International Reading Literacy Study

Source: Department of Human Resources, December 2006



\* AHANA – African-American, Hispanic, Asian, and Native American

Source: Department of Human Resources, December 2006

## UNIVERSITY ADMINISTRATORS 2006-2007

### Undergraduate Admission

John L. Mahoney, Jr., Director

### Center on Aging & Work

Michael A. Smyer, Co-Director  
Martha Pitt-Catsouphe, Co-Director

### AHANA Student Programs

Ines M. Maturana Sendoya, Director

### Alumni Association

John Feudo, Associate Vice President,  
Alumni Relations

### Athletics

Eugene B. DeFilippo, Jr., Director

### Internal Audit

Pamela A. Jerskey, Director

### Auxiliary Services

Patricia Bando, Associate Vice President

### Boisi Center for Religion and American Public Life

Alan Wolfe, Director

### Bookstore

Thomas McKenna, Director

### Budget

Michael T. Callnan, Director

### Campus Ministry

James D. Erps, S.J., Director

### Campus School

Philip A. DiMattia, Director

### Capital Construction

John S. Romeo, Director

### Capital Planning & Engineering

Mary S. Nardone, Director

### Career Center

Theresa A. Harrigan, Director

### Church in the 21<sup>st</sup> Century

Timothy P. Muldoon, Director

### Community Affairs

William R. Mills, Director

### Compliance and Intellectual Property Management

Stephen Erickson, Director

### Connors Family Learning Center

Suzanne M. Barrett, Director

### Continuing Education, Connell School of Nursing

W. Jean Weyman, Director

### Controller

Michael J. Driscoll

### Center for Corporate Citizenship

Bradley K. Googins, Director

### University Counseling Services

Thomas P. McGuinness, Director

### Development - Annual Giving

Eric C. Graage, Associate Vice President

### Development - Capital Giving

Thomas P. Lockerby, Associate Vice President

### Development-Advancement

#### Operations & Planning

Brenda S. Ricard, Associate Vice President

### Dining Service

Helen S. Wechsler, Director

### Environmental Health and Safety

Keith D. Kidd, Director

### Financial Vice President & Treasurer

Kathy Croft, Director, Administrative Services

### First Year Experience

Joseph P. Marchese, Director

### University General Counsel

Joseph Herlihy, Esq.  
Nora E. Field, Associate Counsel, Esq.

### Health Services

Thomas I. Nary, M.D., Director

### University Historian

Thomas H. O'Connor

### Honors Program, College of Arts & Sciences

Mark F. O'Connor, Director

### Honors Program, Carroll School of Management

David R. McKenna, Director

### Human Resources

Robert J. Lewis, Associate Vice President

### Human Resources - Benefits

John R. Burke, Director

### Human Resources - Children's Center

Barbara A. Krakowsky, Director

### Human Resources - Compensation

Halley McLain, Director

### Human Resources - Employee Development

Bernard R. O'Kane, Director

### Human Resources - Office for Institutional Diversity

Richard P. Jefferson, Executive Director

### Human Resources - Employment

Anita E. Ulloa, Director

### Human Resources - Faculty/Staff Assistance Program

Patricia A. Touzin, Director

### Human Resources Service Center

Richard M. Young, Director

### Center for Human Rights & International Justice

David Hollenbach, S.J., Director

### Center for Ignatian Spirituality

Julio Giulietti, S.J., Director

### Information Technology - Applications & Systems Services

Michael Bourque, Associate Vice President

### Information Technology - User & Support Services

Mary C. Corcoran, Associate Vice President

### Information Technology - Network Services

Joseph E. Harrington, Director

### Information Technology - Project Management

Henry A. Perry, Director

### Institutional Research, Planning & Assessment

Kelli Armstrong, Associate Vice President  
Jessica Greene, Director, Institutional Research

### Intersections Project

Burton Howell, Director

### Irish Programs

Thomas E. Hachey, Executive Director

### Jesuit Institute

T. Frank Kennedy, S.J., Director

### Learning to Learn

Dan Bunch, Director

### Learning Resources for Student Athletes

Ferna L. Phillips, Director

### Office of Marketing Communications

Ben Birnbaum, Executive Director and Special  
Assistant to the President

### McMullen Museum of Art

Nancy D. Netzer, Director

### Boston College Neighborhood Center

Maria S. DiChiappari, Director

### Center for Nursing Research

Mary E. Duffy, Director

### Boston College Police

Robert A. Morse, Chief

## UNIVERSITY ADMINISTRATORS 2006-2007 (Continued)

### Presidential Scholars Program

Dennis J. Sardella, Director

### Public Affairs

John B. Dunn, Director

### Procurement Services

Richard J. Geppner, Director

### Institute for Religious Education and Pastoral Ministry

Thomas Groome, Director

### Residential Life

Henry J. Humphreys, Director

### Center for Retirement Research

Alicia H. Munnell, Director

### Institute for Scientific Research

Brian F. Sullivan, Co-Director

Patricia H. Doherty, Co-Director

### Small Business Development Center

Joseph P. Andrews, Director

### Office for Sponsored Programs

John M. Carfora, Director

### Student Affairs

Sheilah S. Horton, Associate Vice President

James Kreinbring, Executive Assistant to the Vice President

### Student Development

Robert A. Sherwood, Dean

### Student Services

Louise M. Lonabocker, Director

### Theater Arts Center

Howard Enoch, Director

### Associate Treasurer

Paul P. Haran, Associate Treasurer and Director of Investments

### Volunteer & Service Learning Center

Daniel P. Ponsetto, Director

### Center on Wealth & Philanthropy

Paul G. Schervish, Director

### Weston Observatory

John E. Ebel, Director

### Winston Center for Leadership & Ethics

Richard Keely, Program Director

Mary Ann Glynn, Research Director

### Center for Work and Family

J. Bradley Harrington, Executive Director

Source: Department of Human Resources

## DEPARTMENT CHAIRPERSONS 2006-2007

### Arts & Sciences

Biology ..... Thomas Chiles

Chemistry ..... Amir H. Hoveyda

Classical Studies..... Charles F. Ahern

Communication .....Dale Herbeck

Computer Science.....Robert Muller

Economics ..... Marvin C. Kraus

English..... Mary Crane

Fine Arts..... John Michalczyk

Geology &  
Geophysics..... Alan L. Kafka

German Studies.....Michael Resler

History .....Marilynn Johnson

Mathematics .....Gerard E. Keough

Music ..... T. Frank Kennedy

Philosophy .....Patrick Byrne

Physics..... Kevin Bedell

Political Science..... Susan Shell

Psychology ..... James Russell

Romance Languages  
& Literatures..... Dwayne E. Carpenter

Slavic & Eastern  
Languages ..... Maxim Shrayer

Sociology ..... Juliet Schor

Theatre..... John H. Houchin

Theology.....Kenneth Himes

### Carroll School of Management

Accounting.....Billy Soo

Business Law ..... Christine N. O'Brien

Finance ..... Hassan Tehranian

Information Systems.....James Gips

Marketing.....Gerald Smith

Operations & Strategic  
Management ..... Samuel B. Graves

Organization Studies .....Stephen Borgatti

### Connell School of Nursing

Adult Health..... Robin Wood

Community  
Health..... Katherine Frame

Maternal &  
Child Health .....Sandra Mott

Psychiatric/Mental  
Health..... Anne Norris

### Lynch School of Education

Counseling, Developmental  
& Educational  
Psychology..... Elizabeth Sparks

Educational Administration  
& Higher Education .....Irwin Blumer

Educational Research,  
Measurement  
& Evaluation.....Larry H. Ludlow

Teacher Education/Special  
Education, Curriculum &  
Instruction..... Audrey Friedman

Source: Office of the Provost and Dean of Faculties

Note: Data for 2006-2007 CSOM departments have been adjusted from incorrect listing of Operations, Information, & Strategic

Management to correct listings of Information Systems and Operations & Strategic Management on March 7, 2007.

## PROFESSIONAL, ADMINISTRATIVE, AND SUPPORT STAFF PERSONNEL By Gender, Fall 2006

	Full-Time Positions					Part-Time Positions					Total Positions	Total FTE
	Men	Women	Open	Total	FTE	Men	Women	Open	Total	FTE		
<b>Professional Administrative</b>												
Dean of Faculties*	123	226	19	368	368.00	18	18	4	40	20.95	408	388.95
Student Affairs	39	58	6	103	103.00	13	15	3	31	8.76	134	111.76
Athletics	70	33	4	107	107.00	13	7	1	21	5.27	128	112.27
Information Technology	109	43	16	168	168.00	1	3	-	4	2.40	172	170.40
Financial Vice President**	64	49	6	119	119.00	-	2	-	2	1.14	121	120.14
University Relations	24	72	16	112	112.00	1	2	-	3	1.70	115	113.70
Campus Facilities	45	8	6	59	59.00	1	-	-	1	0.54	60	59.54
President***	45	22	1	68	68.00	4	3	-	7	3.94	75	71.94
Human Resources	9	28	2	39	39.00	1	1	-	2	0.63	41	39.63
Executive Vice President****	-	7	2	9	9.00	-	-	-	-	-	9	9.00
<b>Total</b>	<b>528</b>	<b>546</b>	<b>78</b>	<b>1,152</b>	<b>1,152.00</b>	<b>52</b>	<b>51</b>	<b>8</b>	<b>111</b>	<b>45.33</b>	<b>1263</b>	<b>1,197.33</b>
<b>Secretarial, Clerical, Technical</b>												
Secretarial/Clerical	52	322	35	409	409.00	6	63	8	77	41.38	486	450.38
Library Assistants	22	38	1	61	61.00	2	9	1	12	7.71	73	68.71
Technical, Other	39	8	2	49	49.00	-	-	-	-	-	49	49.00
<b>Total</b>	<b>113</b>	<b>368</b>	<b>38</b>	<b>519</b>	<b>519.00</b>	<b>8</b>	<b>72</b>	<b>9</b>	<b>89</b>	<b>49.09</b>	<b>608</b>	<b>568.09</b>
<b>Facilities, Plant Services</b>												
Dining Services	107	59	9	175	175.00	5	16	2	23	16.63	198	191.63
Housekeeping	104	50	4	158	158.00	-	-	-	-	-	158	158.00
Grounds & Trades	103	1	4	108	108.00	-	-	-	-	-	108	108.00
Gate Attendants, Police	56	9	2	67	67.00	9	3	1	13	8.45	80	75.45
Mailroom, Switchboard	11	3	-	14	14.00	3	1	-	4	2.20	18	16.20
<b>Total</b>	<b>381</b>	<b>122</b>	<b>19</b>	<b>522</b>	<b>522.00</b>	<b>17</b>	<b>20</b>	<b>3</b>	<b>40</b>	<b>27.28</b>	<b>562</b>	<b>549.28</b>
<b>Total Positions</b>	<b>1,022</b>	<b>1,036</b>	<b>135</b>	<b>2,193</b>	<b>2,193.00</b>	<b>77</b>	<b>143</b>	<b>20</b>	<b>240</b>	<b>121.70</b>	<b>2,433</b>	<b>2,314.70</b>

\* Includes academic administration, Student Services, and all library professional administrative staff

\*\* Includes financial and business departments, Bookstore, Boston College Police, Bureau of Conferences, Dining Services

\*\*\* Includes Office of the President, Office of the Senior Vice President, Mission and Ministry, Boston College Neighborhood Center, Marketing Communications, Public Affairs, Governmental and Community Affairs, University General Counsel, University Historian, University Secretary, and all Executives

\*\*\*\* Includes the Offices of Space Planning and Institutional Research

Note: The above figures represent all permanent positions funded by the University as of September 30, 2006. Restricted funded positions are not included. Positions funded partially by outside contracts or grants are counted above as part-time University Positions.

Source: Department of Human Resources

## RESTRICTED FUNDED PERSONNEL By Gender and FTE, Fall 2006

	Full-Time Positions				Part-Time Positions				Total Positions	Total FTE
	Men	Women	Total	FTE	Men	Women	Total	FTE		
Faculty	1	-	1	1.00	-	-	-	-	1	1.00
Professional, Administrative	10	25	35	35.00	16	26	42	24.90	77	59.90
Research Associate or Assistant	49	60	109	109.00	1	1	2	1.30	111	110.30
Secretarial, Clerical, Technical	1	5	6	6.00	-	9	9	2.60	15	8.60
<b>Total Positions</b>	<b>61</b>	<b>90</b>	<b>151</b>	<b>151.00</b>	<b>17</b>	<b>36</b>	<b>53</b>	<b>28.80</b>	<b>204</b>	<b>179.80</b>

Note: Incremental restricted funded positions supported entirely by Contract & Grant, Endowment or Restricted Gift funding as of September 30, 2006.

Source: Department of Human Resources

## FACULTY BY SCHOOL AND RANK\* 2005-2006

School	Professor		Associate		Assistant		Instructor		Total		Faculty on leave**
	No.	%	No.	%	No.	%	No.	%	No.	%	
Arts & Sciences	159	38%	153	36%	95	23%	15	4%	422	100%	30.5
Education	23	43%	16	30%	15	28%	-	-	54	100%	3
Law	26	57%	16	34%	4	9%	-	-	46	100%	4.5
Management	24	26%	36	39%	22	24%	10	11%	92	100%	4
Nursing	9	21%	15	34%	9	20%	11	25%	44	100%	1
Social Work	5	24%	10	48%	5	24%	1	5%	21	100%	1
<b>Total</b>	<b>246</b>	<b>36%</b>	<b>246</b>	<b>36%</b>	<b>150</b>	<b>22%</b>	<b>37</b>	<b>6%</b>	<b>679</b>	<b>100%</b>	<b>44</b>

\* Includes all full-time regular faculty members

\*\* Includes faculty members who were on unpaid leave for all or part of the 2005-06 academic year

Source: Office of the Provost and Dean of Faculties

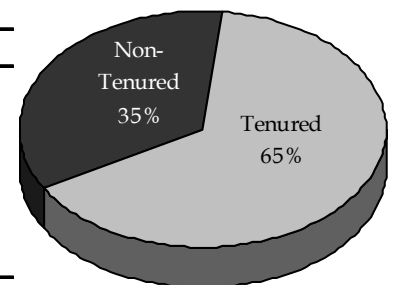
## FACULTY BY SCHOOL AND GENDER 2005-2006

School	Women		Men		Total	
	No.	%	No.	%	No.	%
Arts & Sciences	128	30%	294	70%	422	100%
Education	28	52%	26	48%	54	100%
Law	20	43%	26	57%	46	100%
Management	30	33%	62	67%	92	100%
Nursing	41	93%	3	7%	44	100%
Social Work	12	57%	9	43%	21	100%
<b>Total</b>	<b>259</b>	<b>38%</b>	<b>420</b>	<b>62%</b>	<b>679</b>	<b>100%</b>

Source: Office of the Provost and Dean of Faculties

## FACULTY BY SCHOOL AND TENURE STATUS 2005-2006

School	Tenured Faculty		Non-Tenured Faculty		Total	
	No.	%	No.	%	No.	%
Arts & Sciences	270	64%	152	36%	422	100%
Education	37	69%	17	31%	54	100%
Law	36	78%	10	22%	46	100%
Management	60	65%	32	35%	92	100%
Nursing	24	55%	20	45%	44	100%
Social Work	13	62%	8	38%	21	100%
<b>Total</b>	<b>440</b>	<b>65%</b>	<b>239</b>	<b>35%</b>	<b>679</b>	<b>100%</b>



Source: Office of the Provost and Dean of Faculties

## FACULTY BY HIGHEST DEGREE EARNED AND GENDER 2005-2006

Degree	Women		Men		Total	
	No.	%	No.	%	No.	%
Doctorate	235	91%	407	97%	642	95%
Master's	24	9%	13	3%	37	5%
<b>Total</b>	<b>259</b>	<b>100%</b>	<b>420</b>	<b>100%</b>	<b>679</b>	<b>100%</b>

Source: Office of the Provost and Dean of Faculties

## FACULTY BY RANK AND GENDER 2005-2006

Rank	Women		Men		Total	
	No.	%	No.	%	No.	%
Professor	70	27%	176	42%	246	36%
Associate	93	36%	153	36%	246	36%
Assistant	72	28%	78	19%	150	23%
Instructor	24	9%	13	3%	37	5%
<b>Total</b>	<b>259</b>	<b>100%</b>	<b>420</b>	<b>100%</b>	<b>679</b>	<b>100%</b>

Source: Office of the Provost and Dean of Faculties

**95% of Boston College faculty  
members hold a doctoral degree.**

## FULL-TIME EQUIVALENT FACULTY, TEACHING FELLOWS, AND TEACHING ASSISTANTS By School, 2005-2006

School	FTE of Full-Time Faculty		FTE of Part-Time Faculty		FTE of Fellows & Assistants		Total FTE Faculty	
	No.	%	No.	%	No.	%	No.	%
Arts & Sciences	392.45	61%	104.66	55%	126.67	76%	623.78	63%
Education	50.50	8%	20.66	11%	29.34	18%	100.50	10%
Management	85.00	13%	21.66	12%	1.34	1%	108.00	11%
Nursing	45.00	7%	11.33	6%	6.75	4%	63.08	6%
Law	47.50	8%	8.66	5%	1.67	1%	57.83	6%
Social Work	21.00	3%	21.00	11%	0.67	0%	42.67	4%
<b>Total</b>	<b>641.45</b>	<b>100%</b>	<b>187.97</b>	<b>100%</b>	<b>166.44</b>	<b>100%</b>	<b>995.86</b>	<b>100%</b>

Source: Office of the Provost and Dean of Faculties

## FULL-TIME FACULTY, TEACHING FELLOWS, AND TEACHING ASSISTANTS By School and Department, 2005-2006

	Full-Time Faculty	Teaching Fellows	Teaching Assistants
<b>Arts &amp; Sciences</b>			
Biology	22	-	34
Chemistry	22	-	60
Classics	5	1	-
Communication	19.5	-	-
Computer Science	14	-	-
Economics	27	10	44
English	46.5	28	-
Fine Arts	17	-	-
Geology	7	-	13
Germanic Studies	3	-	-
History	39	12	18
Honors Program	11	-	-
Mathematics	24	10	6
Music	5	-	-
Philosophy	31	22	5
Physics	16	-	23
Political Science	22	2	-
Psychology	21	1	14
Religion and American Public Life	2	2	-
Romance Languages	22	31	-
Slavic	5	-	-
Sociology	18.5	9	16
Theater	7	-	-
Theology	46	7	14
Total Arts and Sciences	452.5	135	247
<b>Education</b>	57	33	55
<b>Law</b>	50.5	-	5
<b>Management</b>	96	4	-
<b>Nursing</b>	45	-	3
<b>Social Work</b>	22	2	-
<b>Total</b>	<b>723</b>	<b>174</b>	<b>310</b>

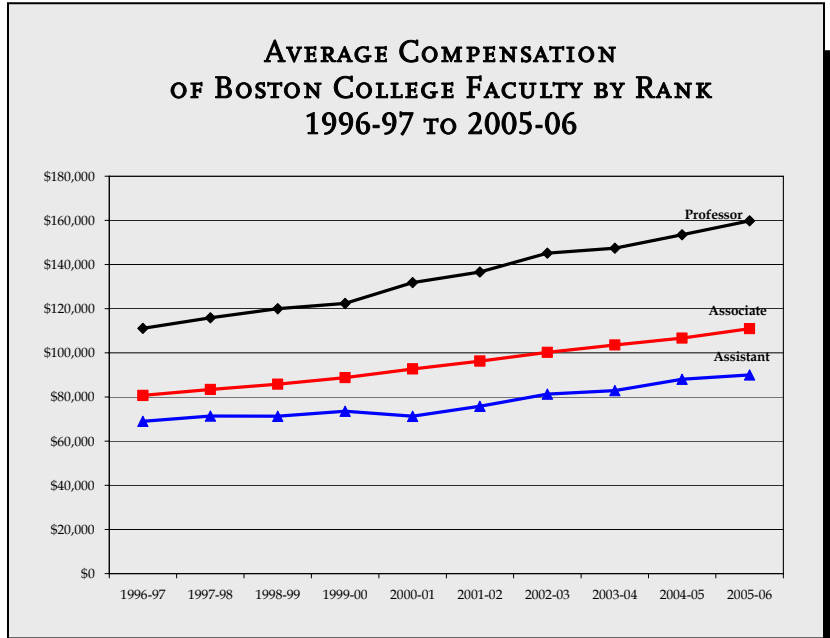
\* Includes faculty on leave

Source: Office of the Provost and Dean of Faculties

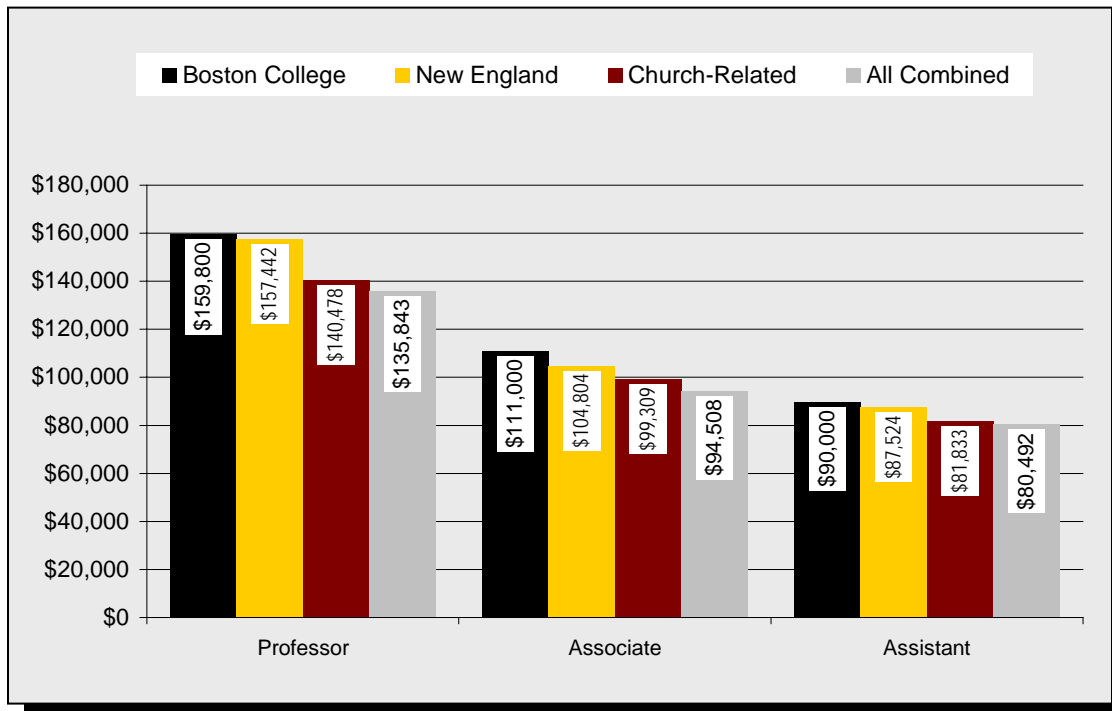
**FACULTY COMPENSATION\***  
**Average by Rank**

Year	Professor	Associate	Assistant
1996-97	\$111,100	\$80,700	\$69,000
1997-98	\$115,900	\$83,400	\$71,400
1998-99	\$120,000	\$85,800	\$71,300
1999-00	\$122,387	\$88,815	\$73,542
2000-01	\$131,800	\$92,700	\$71,300
2001-02	\$136,600	\$96,300	\$75,800
2002-03	\$145,170	\$100,228	\$81,313
2003-04	\$147,392	\$103,577	\$82,912
2004-05	\$153,500	\$106,700	\$88,100
2005-06	\$159,800	\$111,000	\$90,000

\* Includes salary and fringe benefits  
Source: Office of the Provost and Dean of Faculties



**FACULTY COMPENSATION BY RANK\***  
**Boston College Average Compared to AAUP Category I (9-Month Equivalent), 2005-2006**



\* Includes salary and fringe benefits  
Source: Office of the Provost and Dean of Faculties; AAUP

