

FULL-TIME FRESHMAN ENROLLMENT By Year and Gender

Fall	Men	Women	Total
1996	1,145	1,329	2,474
1997	1,084	1,084	2,168
1998	1,063	1,184	2,247
1999	1,103	1,181	2,284
2000	1,114	1,132	2,246
2001	940	1,163	2,103
2002	1,150	1,165	2,315
2003	1,055	1,153	2,208
2004	1,090	1,219	2,309
2005	1,097	1,077	2,174

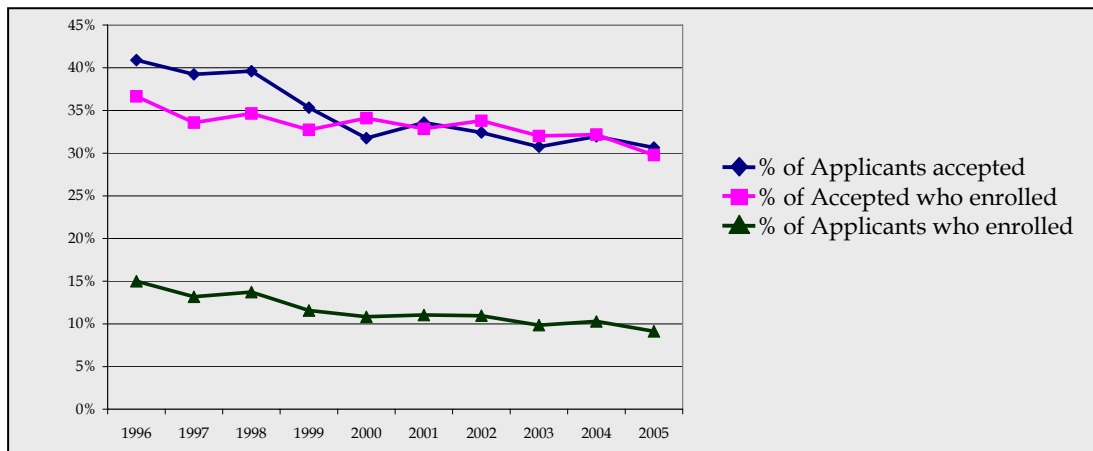
Source: Office of Undergraduate Admission

FRESHMAN ADMISSION PROFILE Middle 50% Range of SAT Scores

Class	Verbal	Math	Combined
2000	580 - 670	600 - 690	1200 - 1340
2001	580 - 680	610 - 690	1210 - 1340
2002	590 - 680	610 - 690	1210 - 1350
2003	590 - 680	610 - 690	1210 - 1360
2004	600 - 690	620 - 700	1230 - 1370
2005	600 - 690	620 - 700	1240 - 1380
2006	600 - 690	620 - 710	1250 - 1390
2007	600 - 690	630 - 710	1260 - 1390
2008	610 - 700	630 - 710	1250 - 1400
2009	610 - 700	640 - 720	1260 - 1410

Source: Office of Undergraduate Admission

FRESHMAN APPLICATIONS, ACCEPTANCES, AND ENROLLMENT By Year



Fall	Applications	Acceptances	Acceptances as a % of Applications	Total Enrollment	Enrollment as a % of Acceptances	Enrollment as a % of Applications
1996	16,501	6,750	41	2,474	37	15
1997	16,455	6,455	39	2,168	34	13
1998	16,373	6,484	40	2,247	35	14
1999	19,746	6,976	35	2,284	33	12
2000	20,743	6,587	32	2,246	34	11
2001	19,059	6,401	34	2,103	33	11
2002	21,133	6,850	32	2,315	34	11
2003	22,424	6,896	31	2,208	32	10
2004	22,451	7,178	32	2,309	32	10
2005	23,823	7,302	31	2,174	30	9

Note: Freshman enrollment reported above is based on deposits received from students accepting the offer of admission on or before the deadline set by the Committee on Admission. Withdrawals may occur during the summer months and the first two weeks in September.

Source: Office of Undergraduate Admission

APPLICATIONS, ACCEPTANCES, AND ENROLLMENT – CLASS OF 2009

Geographic Distribution

	Applications	Acceptances	Enrollment		Applications	Acceptances	Enrollment
Alabama	36	13	3	Nevada	41	7	1
Alaska	22	8	1	New Hampshire	403	101	32
Arizona	116	36	6	New Jersey	2,409	806	247
Arkansas	14	4	1	New Mexico	48	20	2
California	2,417	612	114	New York	3,711	1,258	355
Colorado	193	34	3	North Carolina	169	56	9
Connecticut	1,396	395	140	North Dakota	5	2	0
Delaware	58	21	5	Ohio	485	156	45
District of Columbia	94	35	11	Oklahoma	35	14	3
Florida	776	282	60	Oregon	97	37	10
Georgia	200	57	5	Pennsylvania	995	272	73
Hawaii	103	45	6	Rhode Island	317	90	43
Idaho	30	6	1	South Carolina	37	14	4
Illinois	761	212	48	South Dakota	9	4	1
Indiana	99	24	5	Tennessee	71	28	7
Iowa	31	6	3	Texas	511	165	29
Kansas	63	29	8	Utah	49	13	1
Kentucky	41	16	2	Vermont	106	34	11
Louisiana	65	35	3	Virginia	351	118	27
Maine	251	67	24	Washington	257	86	23
Maryland	569	178	47	West Virginia	17	3	0
Massachusetts	4,216	1,296	605	Wisconsin	150	53	16
Michigan	256	73	10	Wyoming	9	2	1
Minnesota	319	89	29	Puerto Rico	106	48	16
Mississippi	16	5	0	Virgin Islands, Guam, Canal Zone	44	18	4
Missouri	151	53	21	Other	1,058	253	51
Montana	13	3	0	Total	23,823	7,302	2,174
Nebraska	27	10	2				

Note: Application, Acceptance and Enrollment totals are as of May 10, 2005. Class of 2009 includes students from 46 states, the District of Columbia, Puerto Rico, the Virgin Islands, and 58 foreign countries.

Source: Office of Undergraduate Admission

TOP CROSS APPLICATION COMPETITOR SCHOOLS OF ENROLLING FRESHMEN CLASS OF 2008

Top 12 Colleges and Universities

Georgetown University	University of Pennsylvania	University of Notre Dame
Harvard College	Brown University	Duke University
Tufts University	Dartmouth College	New York University
Boston University	Cornell University	Yale University

Note: Competitor schools are determined by the number of admitted students applying to the listed colleges. They do not include students of competitor schools who were not admitted to Boston College.

Source: Office of Enrollment Management Research, 2004 Admitted Student Questionnaire Plus (2,368 student responses).

UNDERGRADUATE TRANSFER STUDENT APPLICATIONS, ACCEPTANCES, AND ENROLLMENT Full-Time

Fall*	Applications	Acceptances	Acceptances as a % of Applications	Total Enrollment	Enrollment as a % of Acceptances	Enrollment as a % of Applications
1996	1,526	252	17	113	45	7
1997	1,338	495	37	247	50	19
1998	1,339	496	35	225	48	17
1999	1,525	447	29	248	55	16
2000	1,363	256	19	142	56	10
2001	1,015	258	25	132	51	13
2002	1,079	130	12	71	55	7
2003	1,123	260	23	124	48	11
2004	942	240	25	122	51	13
2005	1,009	150	15	80	53	8

* Transfer enrollment typically increases 75-125 students second semester.

Source: Office of Undergraduate Admission

UNDERGRADUATE TRANSFER STUDENT ENROLLMENT By Type of Previous Institution and Gender

Fall*	2-Year Public	2-Year Private	4-Year Public	4-Year Private	Total	Men	Women	Total
1996	11	1	43	58	113	42	71	113
1997	22	5	66	154	247	112	135	247
1998	17	8	62	138	225	100	125	225
1999	24	4	59	161	248	95	153	248
2000	10	-	61	71	142	63	79	142
2001	9	2	45	76	132	59	73	132
2002	3	1	24	43	71	32	39	71
2003	13	0	34	77	124	55	69	124
2004	5	0	29	88	122	41	81	122
2005	4	0	24	52	80	38	42	80

* Transfer enrollment typically increases 75-125 students second semester.

Source: Office of Undergraduate Admission

ENROLLMENT, FALL 2005

By School, Gender, and Full- and Part-Time

School	Full-Time			Part-Time			Total		
	Men	Women	Total	Men	Women	Total	Men	Women	Total
Undergraduate Enrollment									
School of Arts & Sciences	2,904	3,004	5,908	0	0	0	2,904	3,004	5,908
Carroll School of Management	1,269	731	2,000	0	0	0	1,269	731	2,000
Lynch School of Education	126	627	753	0	0	0	126	627	753
Connell School of Nursing	15	343	358	0	0	0	15	343	358
Total Undergraduate Day Students	4,314	4,705	9,019	0	0	0	4,314	4,705	9,019
Woods College of Advancing Studies	218	196	414	191	210	401	409	406	815
Graduate & Professional Enrollment									
Graduate Arts & Sciences	191	172	363	382	354	736	573	526	1,099
Graduate Education	76	349	425	175	433	608	251	782	1,033
Graduate Management	200	149	349	369	191	560	569	340	909
Graduate Nursing	10	95	105	10	86	96	20	181	201
Graduate Social Work	37	353	390	20	97	117	57	450	507
Law School	413	404	817	1	1	2	414	405	819
Graduate Advancing Studies	7	6	13	58	97	155	65	103	168
Total Graduate & Professional	934	1,528	2,462	1,015	1,259	2,274	1,949	2,787	4,736
Total University Enrollment	5,466	6,429	11,895	1,206	1,469	2,675	6,672	7,898	14,570

Note: Undergraduate enrollment includes 295 students on Boston College International Exchange programs who are not on the Boston College campus. Excluding those studying abroad, the total number of undergraduates attending Boston College in the Fall 2005 semester is 8,724. Fall 2005 enrollment includes 132 graduate and undergraduate visiting students from Loyola (85), Tulane (46), and Xavier (1) in New Orleans; Woods CASU (115), Carroll GSOM (7), Lynch GSOE (1), Law (7), and GSSW (2).

Source: Office of Student Services

STUDENT CREDIT HOURS

By School

	2000-2001	2001-2002	2002-2003	2003-2004	2004-2005
Undergraduate					
School of Arts & Sciences	171,305	173,114	175,346	173,624	179,834
Carroll School of Management	64,572	63,241	61,099	61,038	58,962
Lynch School of Education	23,885	23,654	23,466	23,719	24,508
Connell School of Nursing	6,316	6,751	6,454	8,188	9,872
Woods College of Advancing Studies	13,725	13,543	13,347	12,899	12,312
Total Undergraduate	279,803	280,303	279,712	279,468	285,488
Graduate & Professional					
Graduate Arts and Sciences	8,913	9,118	9,202	8,988	10,017
Graduate Education	12,957	11,630	13,154	13,919	14,348
Graduate Management	14,334	14,405	14,730	14,629	14,566
Graduate Nursing	2,787	2,674	3,023	3,958	3,865
Graduate Social Work	13,178	12,590	12,598	11,007	10,894
Law School	23,016	23,489	23,416	23,578	23,010
Graduate Advancing Studies	1,707	1,582	1,766	1,659	1,788
Total Graduate & Professional	76,892	75,488	77,889	77,738	78,488
Total	356,695	355,791	357,601	357,206	363,976

Source: Office of Student Services

UNDERGRADUATE, GRADUATE & PROFESSIONAL ENROLLMENT, FALL 2001 TO FALL 2005 By School, Gender, and Full- and Part-Time

	Undergraduate Day Schools						Graduate & Professional						Univ.		
	A&S	Ed.	Mgt.	Nurs.	Total	Adv.St.	GA&S	GEd.	GMgt.	GNurs.	GSSW	Law	Total	GAdv.St.	Total
Fall 2001															
Full-Time	5,850	772	2,148	230	9,000	260	326	325	281	83	300	813	2,128	4	11,392
Part-Time	-	-	-	-	-	537	689	618	692	68	143	1	2,211	167	2,915
Men	2,783	129	1,343	5	4,260	406	518	220	653	6	67	382	1,846	78	6,590
Women	3,067	643	805	225	4,740	391	497	723	320	145	376	432	2,493	93	7,717
Total	5,850	772	2,148	230	9,000	797	1,015	943	973	151	443	814	4,339	171	14,307
Fall 2002															
Full-Time	5,895	756	2,045	220	8,916	248	324	372	273	98	297	806	2,170	10	11,344
Part-Time	-	-	-	-	-	526	712	634	700	72	148	-	2,266	161	2,953
Men	2,889	126	1,264	6	4,285	401	519	235	643	5	64	367	1,833	72	6,591
Women	3,006	630	781	214	4,631	373	517	771	330	165	381	439	2,603	99	7,706
Total	5,895	756	2,045	220	8,916	774	1,036	1,006	973	170	445	806	4,436	171	14,297
Fall 2003															
Full-Time	5,767	767	2,048	269	8,851	282	318	419	349	125	363	811	2,385	12	11,530
Part-Time	-	-	-	-	-	486	719	642	629	69	156	1	2,216	147	2,849
Men	2,805	137	1,270	9	4,221	393	526	279	637	11	85	380	1,918	72	6,604
Women	2,962	630	778	260	4,630	375	511	782	341	183	434	432	2,683	87	7,775
Total	5,767	767	2,048	269	8,851	768	1,037	1,061	978	194	519	812	4,601	159	14,379
Fall 2004															
Full-Time	5,967	786	1,977	329	9,059	285	351	415	356	113	369	796	2,400	14	11,758
Part-Time	-	-	-	-	-	429	695	640	612	120	122	-	2,189	152	2,770
Men	2,865	137	1,242	16	4,260	371	539	272	637	14	69	391	1,922	85	6,638
Women	3,102	649	735	313	4,799	343	507	783	331	219	422	405	2,667	81	7,890
Total	5,967	786	1,977	329	9,059	714	1,046	1,055	968	233	491	796	4,589	166	14,528
Fall 2005															
Full-Time	5,908	753	2,000	358	9,019	414	363	425	349	105	390	817	2,449	13	11,895
Part-Time	-	-	-	-	-	401	736	608	560	96	117	2	2,119	155	2,675
Men	2,904	126	1,269	15	4,314	409	573	251	569	20	57	414	1,884	65	6,672
Women	3,004	627	731	343	4,705	406	526	782	340	181	450	405	2,684	103	7,898
Total	5,908	753	2,000	358	9,019	815	1,099	1,033	909	201	507	819	4,568	168	14,570

Source: Office of Student Services

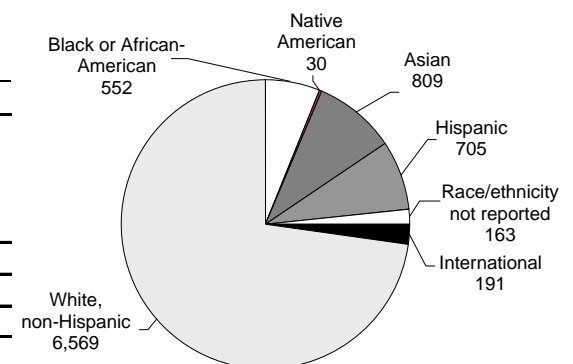
AHANA & INTERNATIONAL ENROLLMENT, FALL 2005 Undergraduate Day Schools

	Men	Women	Total	*Percent
Black or African-American	247	305	552	6.23%
Native American	8	22	30	0.34%
Asian	380	429	809	9.14%
Hispanic	293	412	705	7.96%
AHANA Undergraduate	928	1,168	2,096	23.67%
International Students**	88	103	191	2.12%
AHANA & International Students	1,016	1,271	2,287	25.79%

*Note: AHANA percentages are of students who report their race/ethnicity identification. In fall of 2005, 163 students (98 men, 65 women) did not report race or ethnicity.

**International students include nonresident aliens of all racial and ethnic groups including Caucasian.

Source: Office of Student Services



FULL-TIME EQUIVALENT ENROLLMENT*

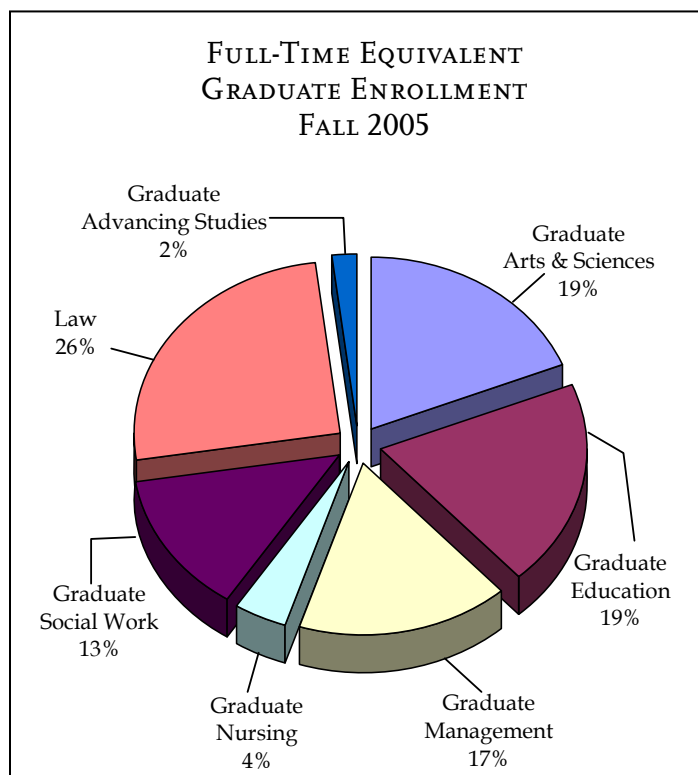
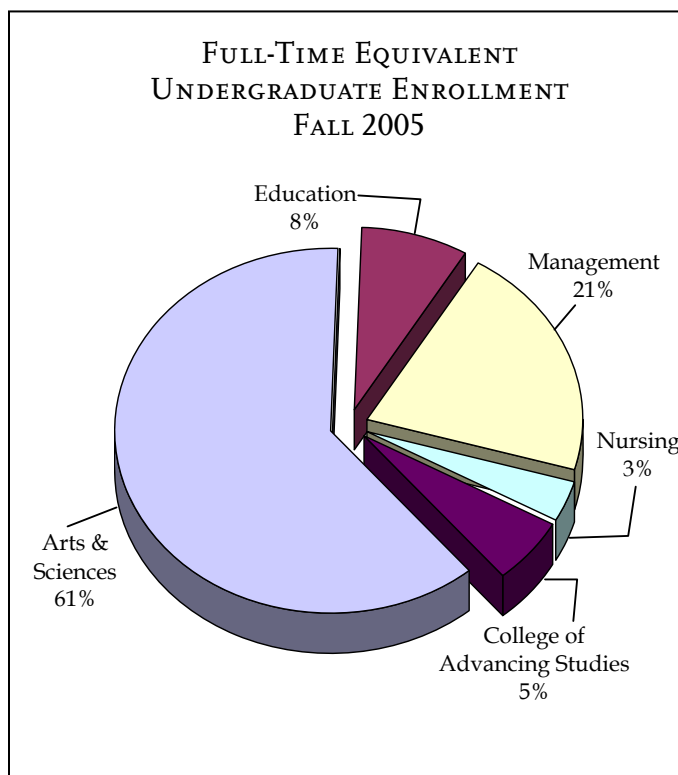
By School, Fall 1996 through Fall 2005

	1996	1997	1998	1999	2000	2001	2002	2003	2004	2005
Undergraduate Students										
School of Arts & Sciences	5,541	5,589	5,577	5,853	5,741	5,850	5,895	5,767	5,967	5,908
Lynch School of Education	772	806	810	828	785	772	756	767	786	753
Carroll School of Management	2,339	2,276	2,288	2,271	2,187	2,148	2,045	2,048	1,977	2,000
School of Nursing	305	250	247	237	216	230	220	269	329	358
Total Day Students	8,957	8,921	8,922	9,189	8,929	9,000	8,916	8,851	9,059	9,019
College of Advancing Studies**	624	531	485	439	464	440	423	444	428	548
Total Undergraduate	9,581	9,452	9,407	9,628	9,393	9,440	9,339	9,295	9,487	9,567
Graduate & Professional										
Graduate Arts & Sciences	605	592	601	548	539	553	561	558	583	608
Graduate Education	601	600	655	665	621	532	583	633	628	628
Graduate Management	455	464	486	455	481	511	506	559	560	536
Graduate Nursing	68	87	99	117	112	106	122	148	153	137
Graduate Social Work	478	463	412	392	360	348	346	415	410	429
Law	803	826	825	829	805	813	806	811	796	818
Graduate Advancing Studies	49	68	81	77	64	60	64	61	65	65
Total Graduate & Professional	3,059	3,100	3,159	3,083	2,982	2,923	2,988	3,185	3,195	3,221
Total University	12,640	12,552	12,566	12,711	12,375	12,363	12,327	12,480	12,682	12,788

* Method of computation: three part-time students equal one full-time equivalent student.

** In 1996, the Evening College became the College of Advancing Studies and began to offer graduate programs.

Source: Office of Student Services



RESIDENT AND NON-RESIDENT ENROLLMENT*

By Year

Year	1996-97	1997-98	1998-99	1999-00	2000-01	2001-02	2002-03	2003-04	2004-05	2005-06
Resident	6,670	6,592	6,560	6,859	6,685	6,973	6,942	7,033	7,248	7,080
Non-Resident	2,288	2,329	2,365	2,147	2,015	1,803	1,719	1,548	1,557	1,644
Total**	8,958	8,921	8,925	9,006	8,700	8,776	8,661	8,581	8,805	8,724

* The above figures refer to undergraduate day students only. There are no resident graduate students.

**Beginning in 1998-99, the total excludes students who are studying abroad.

Source: Offices of Residential Life and Student Services

UNDERGRADUATES STUDYING ABROAD

By Year

	Fall Semester			Spring Semester			Annual Average		
	University Programs	External Programs	Total All Programs	University Programs	External Programs	Total All Programs	University Programs	External Programs	Total All Programs
2000-2001	230	50	280	347	144	491	289	97	386
2001-2002	239	50	289	224	125	349	232	88	319
2002-2003	255	43	298	303	103	406	279	73	352
2003-2004	269	64	333	328	148	476	299	106	405
2004-2005	274	41	315	362	87	449	318	64	382

Source: Office of Student Services

SUMMER SESSION ENROLLMENT

By Year

Summer	1996	1997	1998	1999	2000	2001	2002	2003	2004	2005
Undergraduate	2,007	1,879	1,960	1,969	1,929	1,878	1,881	1,706	1,727	1,685
Graduate/Professional*	1,702	1,886	1,843	1,855	2,031	1,751	1,725	2,037	2,060	2,324
Total	3,709	3,765	3,803	3,824	3,960	3,629	3,606	3,743	3,787	4,009

*Includes students registered through the Institute of Religious Education and Pastoral Ministry and the Carroll Graduate School of Management.

Source: Office of Student Services

GEOGRAPHIC DISTRIBUTION OF UNDERGRADUATE STUDENTS

By State

State	1990	2000	2003	2004	2005	State	1990	2000	2003	2004	2005
Alabama	11	10	12	12	10	Nevada	7	3	4	9	10
Alaska	0	4	3	4	5	New Hampshire	172	184	166	176	165
Arizona	18	29	39	41	35	New Jersey	672	941	955	1,004	979
Arkansas	7	4	3	3	4	New Mexico	2	12	7	7	8
California	184	380	419	435	427	New York	1,039	1,372	1,432	1,449	1,450
Colorado	45	57	69	65	57	North Carolina	22	26	36	42	44
Connecticut	728	765	699	697	644	North Dakota	2	1	2	4	2
Delaware	23	22	18	16	17	Ohio	132	125	145	134	138
Washington, D.C.	28	29	24	26	33	Oklahoma	15	13	12	10	7
Florida	232	303	234	251	260	Oregon	8	20	18	23	26
Georgia	35	53	53	49	43	Pennsylvania	308	309	291	307	304
Hawaii	36	34	21	19	20	Rhode Island	260	184	191	188	189
Idaho	3	4	6	4	2	South Carolina	11	5	8	13	12
Illinois	150	248	228	214	213	South Dakota	1	1	1	0	0
Indiana	25	29	28	25	22	Tennessee	16	15	15	15	17
Iowa	8	17	14	9	9	Texas	122	131	146	131	134
Kansas	14	28	25	18	23	Utah	4	4	13	13	13
Kentucky	11	15	16	7	6	Vermont	47	52	50	42	44
Louisiana	38	22	25	21	14	Virginia	68	76	88	90	91
Maine	128	108	102	93	96	Washington	20	63	49	58	67
Maryland	184	255	231	241	229	West Virginia	9	2	5	3	2
Massachusetts	3,135	2,401	2,435	2,516	2,560	Wisconsin	53	50	54	62	60
Michigan	82	71	72	69	64	Wyoming	2	1	2	3	5
Minnesota	77	110	117	129	116	Guam	0	4	0	1	2
Mississippi	4	2	3	3	1	Puerto Rico	70	47	41	41	48
Missouri	49	54	53	61	66	Virgin Islands	6	1	4	5	8
Montana	6	4	11	10	7	International	227	208	142	176	163
Nebraska	30	22	14	15	16	Other*	n/a	n/a	n/a	n/a	32
Total							8,586	8,930	8,851	9,059	9,019

*Includes Americans living abroad and those living in other American territories
Source: Office of Student Services

UNDERGRADUATE MAJORS, 1996-2005

By School

	1996	1997	1998	1999	2000	2001	2002	2003	2004	2005
Arts & Sciences										
Art History	37	38	36	34	32	45	42	41	60	55
Biochemistry	115	117	97	84	83	82	95	118	125	122
Biology	734	665	543	539	481	443	465	494	581	650
Chemistry	89	84	90	94	84	89	102	98	86	75
Classics	20	24	19	15	11	21	17	26	33	32
Communication	499	542	624	734	865	945	963	925	943	953
Computer Science	118	133	181	202	200	189	139	108	93	68
Economics	364	404	430	402	382	374	398	417	411	445
English	935	931	868	906	863	845	770	758	814	814
Film Studies	-	-	-	-	10	32	46	45	50	51
French	43	39	45	50	56	47	49	46	34	42
Geology/Geophysics	80	73	66	58	52	42	30	29	31	33
German	6	14	8	11	10	3	7	12	16	26
History	379	392	410	431	451	465	530	560	595	627
Independent	2	1	3	2	5	3	1	-	-	-
International Studies	40	67	64	56	45	31	32	35	57	82
Italian	5	7	6	4	5	3	5	2	7	11
Mathematics	190	168	123	148	135	134	194	200	196	190
Music	19	23	26	23	22	29	32	31	36	43
Philosophy	178	158	166	193	211	230	261	252	255	282
Physics	33	18	29	33	36	34	46	50	61	47
Romance Languages-Total	119	120	116	114	110	96	111	115	101	119
Political Science	700	671	618	649	626	646	669	693	796	801
Psychology	736	694	703	764	684	660	617	492	428	425
Slavic & Eastern Languages	12	8	11	11	7	5	12	15	15	21
Sociology	233	239	238	249	219	219	247	232	202	170
Spanish/Hispanic Studies	71	74	65	60	49	46	57	67	60	66
Studio Art	48	34	41	44	42	40	41	42	42	35
Theater Arts	66	87	84	106	101	91	91	107	124	114
Theology	47	54	70	80	88	92	137	130	151	106
Education										
American Heritage	4	2	2	1	2	2	4	8	7	5
Child in Society	99	88	67	65	49	40	31	30	26	21
Early Childhood	57	50	53	68	57	52	43	42	45	31
Elementary Education	231	222	217	224	256	279	297	294	270	243
General Science	5	2	4	6	4	2	3	5	1	2
Perspectives on Spanish America	9	8	7	5	7	14	9	7	9	5
Human Development	231	258	289	290	277	285	276	295	314	315
Intensive Special Needs	29	28	41	27	21	15	4	-	-	-
Math/Computer Science	29	33	34	33	29	23	26	40	32	24
Moderate Special Needs	116	132	122	125	85	24	7	-	-	-
Secondary Education	143	152	146	160	123	143	148	155	161	169
Management										
Accounting	383	353	336	298	245	246	279	287	302	328
Accounting/Information Tech.	-	-	-	-	-	4	7	9	4	6
Computer Science	56	61	63	62	63	73	52	28	14	16
Corp. Reporting & Analysis	-	-	-	-	-	-	-	32	25	18
Economics	143	149	148	139	128	136	127	140	128	124
Finance	747	743	783	797	732	665	679	717	763	760
General Management	258	250	232	259	215	189	159	136	125	187
Human Resource Management	67	59	62	54	30	45	39	37	38	31
Information Systems	82	94	136	159	181	176	128	85	50	32
Marketing	487	463	498	444	427	429	395	397	392	396
Operations & Technology Mgt.	67	79	87	79	86	65	65	48	29	32
Nursing										
	306	250	250	238	217	230	220	269	329	358

Note: This table includes each declared major. Students with double or triple majors are therefore counted two and three times; College of Advancing Studies students are not included in this table.

Source: Office of Student Services

UNDERGRADUATE MINORS, 1995-2005*

By School

	1995	2000	2002	2003	2004	2005
Arts & Sciences						
American Studies	12	10	22	25	24	17
Art History	0	4	11	11	10	17
Ancient Civilization	0	1	12	7	15	14
Asian Studies	4	4	11	14	16	8
Biopsychology	0	0	0	0	2	3
Black Studies	22	9	22	32	36	34
Chemistry	0	6	26	31	56	43
Classical Studies	0	3	1	0	0	2
Cognitive Sciences	3	4	7	2	0	0
Computer Science	21	33	19	21	11	10
Creative Writing	0	0	0	1	0	6
Economics	0	45	55	52	40	46
Environmental Studies	0	68	37	32	52	63
Faith, Peace, and Justice	28	33	104	84	78	50
Film Studies	25	24	37	47	58	48
French	0	28	41	53	67	65
General Education	44	41	31	36	27	44
Geology/Geophysics	0	3	3	5	6	3
German/Germanic Studies	0	8	12	9	14	13
Health Science	26	25	22	21	21	20
Hispanic Studies	0	82	73	73	82	99
History	0	65	136	177	178	132
Irish Studies	3	5	6	12	8	9
International Studies	43	28	47	87	124	136
Italian/Italian Studies	5	12	13	25	21	22
Latin American Studies	0	7	24	20	24	25
Linguistics	0	0	0	0	0	3
Mathematics	0	23	34	46	44	63
Math/Computer Science	0	2	1	0	1	0
Middle Eastern Studies	0	1	2	22	30	35
Music	0	19	43	39	30	40
Philosophy	0	21	35	48	68	75
Physics	0	3	3	2	4	8
Psychology Studies	0	0	0	3	10	12
Russian/Eastern Europe	0	0	3	3	5	6
Scientific Computation	0	3	5	4	5	3
Secondary Education	51	28	22	17	15	15
Sociology	0	0	1	4	0	5
Studio Art	0	18	37	45	53	37
Theology	0	11	26	35	32	40
Women's Studies	15	17	17	22	19	31
Education						
Hispanic Studies	0	8	1	0	3	3
Human Development	10	8	5	13	11	10
Math/Elementary/Secondary	0	0	3	7	7	12
Special Education	0	28	50	55	46	41
Management						
International Studies	15	8	8	6	0	8
Organizational Studies	6	31	33	26	30	30
Psychology/Management	0	9	2	2	3	3
Programs of Study						
Pre Dental	40	29	25	25	40	42
Pre Medical	1,145	900	1,014	1,086	1,095	1,231
Pre Law	837	479	606	613	624	522

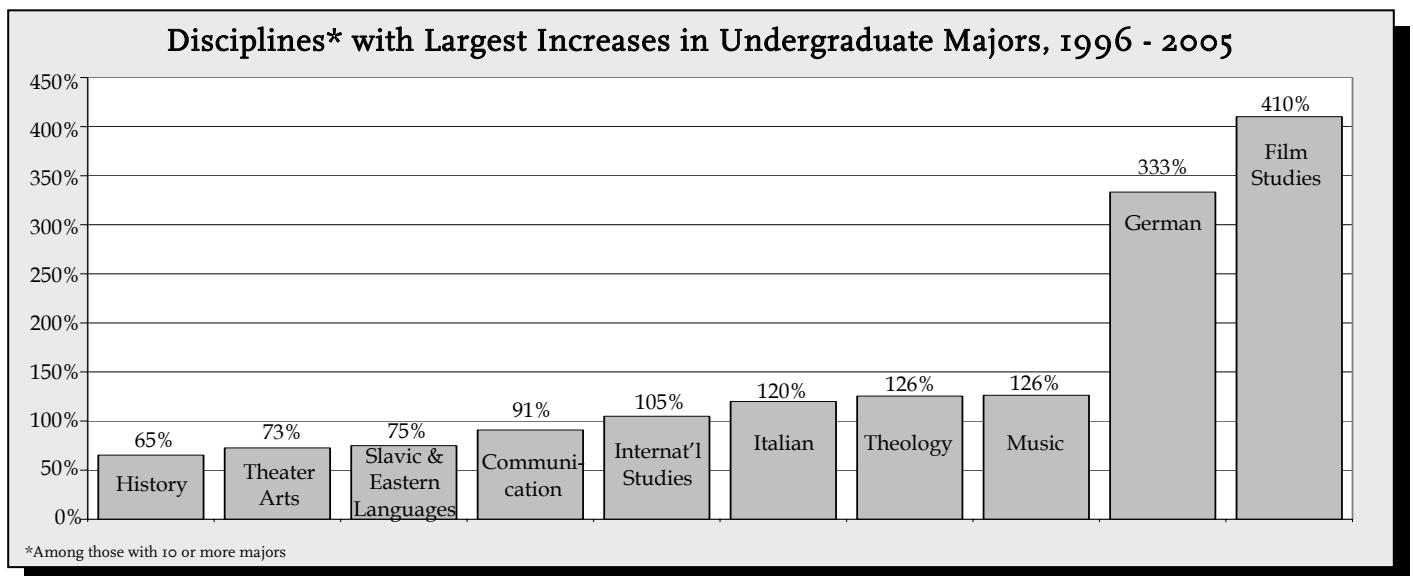
*2001 data not available.

Source: Office of Student Services

MOST POPULAR UNDERGRADUATE MAJORS By Year

1995		2000		2004		2005	
English	927	Communication	865	Communication	943	Communications	953
Biology	752	English	863	English	814	English	814
Political Science	747	Finance	732	Political Science	796	Political Science	801
Psychology	743	Psychology	684	Finance	763	Finance	760
Finance	702	Political Science	626	History	595	Biology	650
Communication	522	Biology	481	Biology	581	History	627
Marketing	430	History	451	Psychology	428	Economics	445
Accounting	426	Marketing	427	Economics	411	Psychology	425
History	411	Economics	382	Marketing	392	Marketing	396
Nursing	368	Human Development	277	Nursing	329	Nursing	358

Source: Office of Student Services



MOST POPULAR UNDERGRADUATE MINORS By Year

1995		2000		2004		2005	
Secondary Education	51	Hispanic Studies	82	History	178	International Studies	136
General Education	44	Environmental Studies	68	International Studies	124	History	132
International Studies	43	History	65	Hispanic Studies	82	Hispanic Studies	99
Faith, Peace, and Justice	28	Economics	45	Faith, Peace, and Justice	78	Philosophy	75
Health Science	26	General Education	41	Philosophy	68	French	65
Film Studies	25	Computer Science	33	French	67	Environmental Studies	63
Black Studies	22	Faith, Peace, and Justice	33	Film Studies	58	Mathematics	63
Computer Science	21	Organizational Studies	31	Chemistry	56	Faith, Peace, and Justice	50
Women's Studies	15	International Studies	28	Studio Art	53	Film Studies	48
American Studies	12	French	28	Environmental Studies	52	Economics	46
		Secondary Education	28				
		Special Education	28				

*Does not include Pre-Dental, Pre-Law, or Pre-Medical programs of study
Source: Office of Student Services

INTERNATIONAL STUDENTS & SCHOLARS By School, 2005-2006*

Arts & Sciences	88
Education	9
Management	84
Nursing	1
College of Advancing Studies	11
Exchange Students - Undergraduate	104
Total Undergraduate	297
Graduate Arts & Sciences	231
Graduate Education	85
Graduate Management	123
Graduate Nursing	5
Graduate Social Work	11
Law	14
Graduate Advancing Studies	8
Graduate Exchange Students	3
Graduate Visiting Students	1
Total Graduate/Professional	481
Total Enrolled Students**	778
Practical Training***	154
Faculty and Research Scholars	133
Total	1065

INTERNATIONAL STUDENTS & SCHOLARS By Class or Program, 2005-2006*

Freshmen	59
Sophomores	50
Juniors	53
Seniors	24
Undergraduate Exchange Students	104
Visiting Students	7
Total Undergraduate	297
Graduate/Professional	
M.A.	52
M.A.T.	1
M.B.A.	38
M.Ed.	28
M.S.	70
M.S.W.	10
C.A.E.S.	1
Ph.D.	263
J.D.	14
Visiting or Exchange Students	4
Total Graduate/Professional	481
Practical Training**	154
Faculty and Research Scholars	133
Total	1065

*These figures do not include all students, faculty, and scholars who will arrive in Spring 2006 which would add approximately 30-40 to the total international population for 2005-2006.

**It is important to note that the total number of degree and international exchange students has actually increased approximately 5% from last year. The statistics for 2004-2005 included 46 visiting graduate students who did not come to BC this summer.

***Students who have graduated from Boston College undertaking a period of practical training in the United States.

Source: Office of the Dean for Student Development

*These figures do not include all students, faculty, and scholars who will arrive in Spring 2006 which would add approximately 30-40 to the total international population for 2005-2006.

**Students who have graduated from Boston College undertaking a period of practical training in the United States.

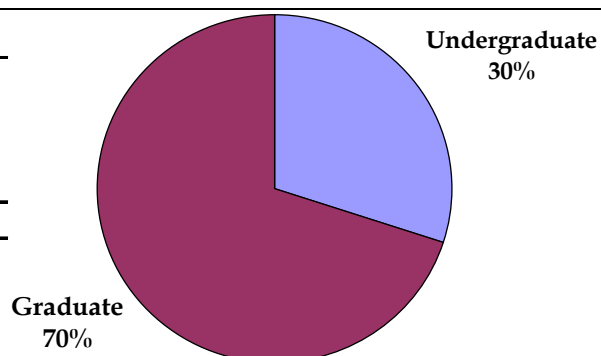
Source: Office of the Dean for Student Development

INTERNATIONAL STUDENTS & SCHOLARS By Gender and Program, 2005 - 2006

	Men	Women	Total
Undergraduate	133	164	297
Graduate	245	236	481
Practical Training*	58	96	154
Faculty and Research Scholars	82	51	133
Total	518	547	1065

*Students who have graduated from Boston College undertaking a period of practical training in the United States.

Source: Office of the Dean for Student Development



INTERNATIONAL STUDENTS BY COUNTRY

Undergraduate and Graduate, 2005-2006

	Under-graduate	Graduate/ Professional	Total		Under-graduate	Graduate/ Professional	Total
Albania	-	1	1	Kuwait	1	-	1
Angola	-	1	1	Latvia	-	1	1
Argentina	2	1	3	Lebanon	-	1	1
Armenia	-	1	1	Liberia	1	-	1
Australia	20	4	24	Lithuania	-	1	1
Austria	-	1	1	Malaysia	2	1	3
Azerbaijan	1	-	1	Mexico	2	1	3
Bangladesh	-	1	1	Moldova	-	1	1
Belarus	-	1	1	Morocco	2	-	2
Belgium	1	-	1	Nepal	-	6	6
Bermuda	1	-	1	Netherlands	10	-	10
Bolivia	2	1	3	Nicaragua	2	-	2
Brazil	6	5	11	Nigeria	1	5	6
Bulgaria	2	15	17	Norway	2	1	3
Cameroon	-	1	1	Pakistan	-	2	2
Canada	15	41	56	Panama	1	-	1
Chad	-	1	1	Paraguay	1	-	1
Chile	3	3	6	Peru	2	3	5
China	6	125	131	Philippines	2	8	10
Colombia	2	4	6	Poland	2	-	2
Congo, Democratic Republic of the	-	1	1	Portugal	-	1	1
Czech Republic	-	2	2	Republic of the Congo	-	2	2
Denmark	5	-	5	Romania	-	4	4
Dominican Republic	9	2	11	Russia	3	6	9
Ecuador	4	-	4	Rwanda	-	2	2
Egypt	2	-	2	Saudi Arabia	3	2	5
El Salvador	2	-	2	Senegal	-	1	1
Finland	-	1	1	Singapore	9	6	15
France	21	7	28	Slovenia	-	1	1
Georgia	-	1	1	South Africa	-	2	2
Germany	8	4	12	Spain	14	4	18
Ghana	1	1	2	Sweden	2	1	3
Greece	3	1	4	Switzerland	-	1	1
Guatemala	2	-	2	Taiwan	3	20	23
Haiti	1	-	1	Tanzania	-	1	1
Hong Kong*	3	2	5	Thailand	1	9	10
Hungary	1	-	1	Trinidad & Tobago	1	1	2
Iceland	1	-	1	Tunisia	1	-	1
India	1	26	27	Turkey	-	22	22
Indonesia	4	3	7	Uganda	-	7	7
Ireland	6	4	10	Ukraine	2	2	4
Israel	1	5	6	United Arab Emirates	2	-	2
Italy	10	13	23	United Kingdom	17	7	24
Jamaica	1	1	2	Uzbekistan	1	-	1
Japan	2	13	15	Venezuela	5	6	11
Jordan	2	1	3	Vietnam	-	5	5
Kazakhstan	2	1	3	Yugoslavia	1	1	2
Kenya	1	1	2	Zimbabwe	-	1	1
Korea South	47	38	85				
				Total	250	443	693
				Countries Represented			96

*Hong Kong remains a classified country for statistical reporting by the Institute of International Education

Source: Office of the Dean for Student Development

UNDERGRADUATE AND GRADUATE DEGREES CONFERRED*

By Degree and Gender

	2000-2001			2001-2002			2002-2003			2003-2004			2004-2005		
	Men	Women	Total	Men	Women	Total	Men	Women	Total	Men	Women	Total	Men	Women	Total
Undergraduate															
Arts & Sciences															
A.B.	594	652	1,246	538	690	1,228	637	701	1,338	574	604	1,178	568	718	1,286
B.S.	80	80	160	76	81	157	82	52	134	90	67	157	84	81	165
Total Arts & Sciences	674	732	1,406	614	771	1,385	719	753	1,472	664	671	1,335	652	799	1,451
Education - A.B.	20	184	204	27	171	198	27	157	184	24	171	195	35	162	197
Management - B.S.	376	206	582	352	215	567	325	201	526	369	186	555	321	212	533
Nursing - B.S.	1	46	47	2	62	64	1	42	43	1	45	46	2	58	60
Subtotal Undergraduate Day Degrees Conferred	1,071	1,168	2,239	995	1,219	2,214	1,072	1,153	2,225	1,058	1,073	2,131	1,010	1,231	2,241
Advancing Studies - A.B.	47	50	97	56	41	97	42	46	88	48	44	92	37	63	100
Total Undergraduate Degrees Conferred	1,118	1,218	2,336	1,051	1,260	2,311	1,114	1,199	2,313	1,106	1,117	2,223	1,047	1,294	2,341
Graduate															
Ph.D.	40	69	109	55	65	120	54	77	131	55	62	117	35	87	122
D.Ed.	-	-	-	-	-	-	5	7	12	1	4	5	6	9	15
M.A.	98	196	294	94	168	262	81	169	250	88	225	313	107	230	337
M.S.	93	112	205	97	85	182	109	122	231	117	126	243	168	187	355
M.Ed.	51	178	229	21	173	194	34	167	201	40	152	192	32	161	193
M.A.T.	1	4	5	1	3	4	2	3	5	0	3	3	5	5	10
M.S.W.	27	143	170	20	132	152	15	136	151	28	140	168	26	161	187
M.S.T.	1	1	2	-	3	3	-	-	-	2	1	3	1	3	4
M.B.A.	155	99	254	193	97	290	160	90	250	157	99	256	174	78	252
C.A.E.S.	3	9	12	-	13	13	1	4	5	6	11	17	5	4	9
Total Graduate Degrees Conferred	469	811	1,280	481	739	1,220	461	775	1,236	494	823	1,317	559	925	1,484
Professional															
J.D.	130	132	262	150	118	268	115	158	273	130	145	275	124	133	257
Total Graduate and Professional Degrees Conferred	599	943	1,542	631	857	1,488	576	933	1,509	624	968	1,592	683	1,058	1,741
Total Degrees Conferred	1,717	2,161	3,878	1,682	2,117	3,799	1,690	2,132	3,822	1,730	2,085	3,815	1,730	2,352	4,082

*August, December, and May graduations combined.
Source: Office of Student Services

UNDERGRADUATE DEGREES CONFERRED*

By Degree and Number of Majors

	2000-2001	2001-2002	2002-2003	2003-2004	2004-2005
College of Arts and Sciences					
A.B.					
Single Major	1061	1032	1117	964	991
Double Major	184	192	220	213	294
Triple Major	1	4	1	1	1
Total A.B. Degrees	1,246	1,228	1,338	1,178	1,286
B.S.					
Single Major	149	142	125	134	144
Double Major	11	15	9	23	20
Triple Major	-	-	-	-	1
Total B.S. Degrees	160	157	134	157	165
Total College of Arts & Sciences	1,406	1,385	1,472	1,335	1,451
Lynch School of Education - A.B.					
Single Major	55	41	40	40	50
Double Major	149	157	144	154	145
Triple Major	-	-	-	1	2
Total Lynch School of Education	204	198	184	195	197
Carroll School of Management - B.S.					
Single Major	374	346	312	299	306
Double Major	201	221	205	248	219
Triple Major	7	-	9	8	8
Total Carroll School of Management	582	567	526	555	533
Connell School of Nursing					
Single Major	47	63	42	46	60
Double Major	-	1	1	-	-
Total Connell School of Nursing	47	64	43	46	60
Subtotal-Undergraduate Day Degrees Conferred	2,239	2,214	2,225	2,131	2,241
Woods College of Advancing Studies - A.B.					
Single Major	97	97	86	88	98
Double Major	-	-	2	4	2
Triple Major	-	-	-	-	-
Total Woods College of Advancing Studies	97	97	88	92	100
Total Undergraduate Degrees Conferred	2,336	2,311	2,313	2,223	2,341

*August, December, and May graduations combined.
Source: Office of Student Services

UNDERGRADUATE DEGREES CONFERRED

By Major*

	2000-2001	2001-2002	2002-2003	2003-2004	2004-2005
Accounting	77	66	89	99	100
Accounting/Information Technology	-	-	1	3	1
Art History	7	10	14	15	14
Biochemistry	15	21	15	17	29
Biology	109	88	81	94	106
Chemistry	18	18	23	26	19
Child in Society	4	5	-	1	2
Classics	1	4	3	2	4
Communication	215	227	240	192	248
Computer Science	54	58	57	48	26
Corporate Reporting & Analysis	-	-	-	1	5
Early Childhood Education	11	13	12	9	13
Economics	133	147	143	145	130
Elementary Education	47	64	58	78	69
Elementary Education & Moderate Special Needs	30	7	7	-	-
English	215	211	232	199	182
Environmental Geosciences	10	19	8	7	7
Film Studies	1	7	4	7	9
Finance	257	208	206	221	234
French	8	11	7	9	10
Geology	-	-	-	-	-
Geophysics	2	2	-	-	-
Geology/Geophysics	1	1	-	2	-
German	3	-	3	0	2
Hispanic Studies	8	6	8	7	10
History	119	125	145	143	145
Human Development	85	79	75	81	86
Independent	2	1	1	-	-
Information Systems	27	43	32	18	15
International Studies	28	14	12	12	19
Italian	1	-	2	1	-
Linguistics	1	1	1	0	3
Management	17	18	21	15	13
Marketing	147	160	124	135	126
Mathematics	25	22	32	28	44
Mathematics/Computer Science	-	3	-	-	1
Music	4	5	4	4	3
Nursing	47	64	43	46	60
Operations & Technology Management	19	14	16	15	6
Organizational Studies/Human Resource Management	9	12	6	6	6
Philosophy	42	35	62	49	56
Physics	5	7	6	13	6
Political Science	134	130	121	121	146
Psychology	146	155	151	133	125
Russian	1	1	-	1	-
Secondary Education	22	24	29	26	26
Severe Special Needs	5	3	3	-	-
Slavic Studies	-	-	-	-	1
Sociology	89	53	87	61	68
Studio Art	11	9	6	4	14
Theatre	16	21	14	10	21
Theology	11	22	21	27	31
TOTAL**	2,239	2,214	2,225	2,131	2,241

*Double and triple majors counted by first major.

**Woods College of Advancing Studies majors are not included in this total.

Source: Office of Student Services

UNDERGRADUATE DEGREES CONFERRED

By School and Major*

	2002-2003						2003-2004						2004-2005					
	A&S		Ed	Mgt	Nurs	Total	A&S		Ed	Mgt	Nurs	Total	A&S		Ed	Mgt	Nurs	Total
	A.B.	B.S.	A.B.	B.S.	B.S.		A.B.	B.S.	A.B.	B.S.	B.S.		A.B.	B.S.	A.B.	B.S.	B.S.	
Accounting	-	-	-	89	-	89	-	-	-	99	-	99	-	-	-	100	-	100
Accounting/Information Tech	-	-	-	1	-	1	-	-	-	3	-	3	-	-	-	1	-	1
Art History	14	-	-	-	-	14	15	-	-	-	-	15	14	-	-	-	-	14
Biochemistry	-	15	-	-	-	15	-	17	-	-	-	17	-	29	-	-	-	29
Biology	1	80	-	-	-	81	9	85	-	-	-	94	12	94	-	-	-	106
Chemistry	-	23	-	-	-	23	-	26	-	-	-	26	-	19	-	-	-	19
Child in Society	-	-	-	-	-	0	-	-	1	-	-	1	-	-	2	-	-	2
Classics	3	-	-	-	-	3	2	-	-	-	-	2	4	-	-	-	-	4
Communication	240	-	-	-	-	240	192	-	-	-	-	192	248	-	-	-	-	248
Computer Science	47	2	-	8	-	57	27	7	-	14	-	48	16	10	-	-	-	26
Corporate Reporting & Analysis	-	-	-	-	-	-	-	-	-	1	-	1	-	-	-	5	-	5
Early Childhood Education	-	-	12	-	-	12	-	-	9	-	-	9	-	-	13	-	-	13
Economics	120	-	-	23	-	143	117	-	-	28	-	145	103	-	-	27	-	130
Elementary Education	-	-	58	-	-	58	-	-	78	-	-	78	-	-	69	-	-	69
Elementary Education & Moderate Special Needs	-	-	7	-	-	7	-	-	-	-	-	-	-	-	-	-	-	-
English	232	-	-	-	-	232	199	-	-	-	-	199	182	-	-	-	-	182
Environmental Geosciences	-	8	-	-	-	8	-	7	-	-	-	7	-	7	-	-	-	7
Film Studies	4	-	-	-	-	4	7	-	-	-	-	7	9	-	-	-	-	9
Finance	-	-	-	206	-	206	-	-	-	221	-	221	-	-	-	234	-	234
French	7	-	-	-	-	7	9	-	-	-	-	9	10	-	-	-	-	10
Geology	-	-	-	-	-	-	-	-	-	-	-	-	-	-	-	-	-	-
Geophysics	-	-	-	-	-	-	-	-	-	-	-	-	-	-	-	-	-	-
Geology/Geophysics	-	-	-	-	-	-	-	2	-	-	-	2	-	-	-	-	-	-
German	3	-	-	-	-	3	-	-	-	-	-	-	2	-	-	-	-	2
Hispanic Studies	8	-	-	-	-	8	7	-	-	-	-	7	10	-	-	-	-	10
History	145	-	-	-	-	145	143	-	-	-	-	143	145	-	-	-	-	145
Human Development	-	-	75	-	-	75	-	-	81	-	-	81	-	-	86	-	-	86
Independent	1	-	-	-	-	1	-	-	-	-	-	-	-	-	-	-	-	-
Information Systems	-	-	-	32	-	32	-	-	-	18	-	18	-	-	-	15	-	15
International Studies	12	-	-	-	-	12	12	-	-	-	-	12	19	-	-	-	-	19
Italian	2	-	-	-	-	2	1	-	-	-	-	1	-	-	-	-	-	-
Linguistics	1	-	-	-	-	1	-	-	-	-	-	-	3	-	-	-	-	3
Management	-	-	-	21	-	21	-	-	-	15	-	15	-	-	-	13	-	13
Marketing	-	-	-	124	-	124	-	-	-	135	-	135	-	-	-	126	-	126
Mathematics	32	-	-	-	-	32	28	-	-	-	-	28	44	-	-	-	-	44
Mathematics/Computer Science	-	-	-	-	-	-	-	-	-	-	-	-	-	-	1	-	-	1
Music	4	-	-	-	-	4	4	-	-	-	-	4	3	-	-	-	-	3
Nursing	-	-	-	-	43	43	-	-	-	-	46	46	-	-	-	-	60	60
Operations & Technology Mgmt	-	-	-	16	-	16	-	-	-	15	-	15	-	-	-	6	-	6
Organizational Studies/ Human Resource Management	-	-	-	6	-	6	-	-	-	6	-	6	-	-	-	6	-	6
Philosophy	62	-	-	-	-	62	49	-	-	-	-	49	56	-	-	-	-	56
Physics	-	6	-	-	-	6	-	13	-	-	-	13	-	6	-	-	-	6
Political Science	121	-	-	-	-	121	121	-	-	-	-	121	146	-	-	-	-	146
Psychology	151	-	-	-	-	151	133	-	-	-	-	133	125	-	-	-	-	125
Russian	-	-	-	-	-	-	1	-	-	-	-	1	-	-	-	-	-	-
Secondary Education	-	-	29	-	-	29	-	-	26	-	-	26	-	-	26	-	-	26
Severe Special Needs	-	-	3	-	-	3	-	-	-	-	-	-	-	-	-	-	-	-
Slavic Studies	-	-	-	-	-	-	-	-	-	-	-	-	1	-	-	-	-	1
Sociology	87	-	-	-	-	87	61	-	-	-	-	61	68	-	-	-	-	68
Studio Art	6	-	-	-	-	6	4	-	-	-	-	4	14	-	-	-	-	14
Theatre	14	-	-	-	-	14	10	-	-	-	-	10	21	-	-	-	-	21
Theology	21	-	-	-	-	21	27	-	-	-	-	27	31	-	-	-	-	31
Total**	1,338	134	184	526	43	2,225	1,178	157	195	555	46	2,131	1,286	165	197	533	60	2,241

*Double & triple majors counted by first major.

**Woods College of Advancing Studies majors are not included in this total.

Source: Office of Student Services

GRADUATE DEGREES CONFERRED, 2004-2005*

By School, Degree, Primary Field, and Gender

	Doctorates			Master's/Certificates/J.D.			Total		
	Men	Women	Total	Men	Women	Total	Men	Women	Total
Graduate School of Arts & Sciences									
Humanities									
American Studies	-	-	-	-	-	-	-	-	-
Classics	-	-	-	-	-	-	-	-	-
English	-	4	4	8	30	38	8	34	42
History	4	2	6	9	5	14	13	7	20
Latin & Greek	-	-	-	2	1	3	2	1	3
Linguistics	-	-	-	0	1	1	0	1	1
Pastoral Ministry	-	-	-	5	23	28	5	23	28
Philosophy	8	1	9	24	4	28	32	5	37
Religion & Education	1	2	3	-	-	-	1	2	3
Romance Languages	-	3	3	5	9	14	5	12	17
Russian	-	-	-	1	1	2	1	1	2
Slavic Studies	-	-	-	-	-	-	-	-	-
Theology	4	6	10	5	6	11	9	12	21
Social Sciences									
Economics	2	7	9	8	10	18	10	17	27
Political Science	1	-	1	4	3	7	5	3	8
Psychology	-	3	3	1	4	5	1	7	8
Sociology	1	3	4	2	1	3	3	4	7
Sciences									
Biology	-	2	2	2	2	4	2	4	6
Chemistry	5	5	10	2	4	6	7	9	16
Geology/Geophysics	-	-	-	2	2	4	2	2	4
Mathematics	-	-	-	4	3	7	4	3	7
Physics	-	-	-	5	1	6	5	1	6
Total - Graduate A&S	26	38	64	89	110	199	115	148	263
Lynch Graduate School of Education									
Counseling/Counseling Psychology	1	9	10	19	76	95	20	85	105
Curriculum & Instruction& Sp Ed	1	3	4	32	149	181	33	152	185
Developmental/Educational Psych	-	3	3	1	24	25	1	27	28
Educ. Research/Measurement/Evaluation	-	4	4	-	5	5	-	9	9
Higher Education Administration	1	6	7	9	29	38	10	35	45
Religious Education	-	-	-	6	7	13	6	7	13
Educational Administration	8	13	21	5	12	17	13	25	38
Professional School Administration Program	-	1	1	-	-	-	-	1	1
Total - Graduate Education	11	39	50	72	302	374	83	341	424
Carroll Graduate School of Management									
Business Administration	-	-	-	174	78	252	174	78	252
Finance	1	-	1	74	19	93	75	19	94
Organizational Studies	1	1	2	9	6	15	10	7	17
Accounting	-	-	-	38	68	106	38	68	106
Total - Graduate Management	2	1	3	295	171	466	297	172	469
Connell Graduate School of Nursing									
Nursing	1	15	16	5	54	59	6	69	75
Graduate School of Social Work									
Social Work	1	3	4	26	161	187	27	164	191
Woods College of Advancing Studies									
Administrative Studies	-	-	-	31	31	62	31	31	62
Law School - Law (J.D.)									
	-	-	-	124	133	257	124	133	257
Total Graduate & Professional Degrees	41	96	137	642	962	1,604	683	1,058	1,741

*August, December and May graduations combined.
Source: Office of Student Services

UNDERGRADUATE FINANCIAL AID, 2000-2005

Dollars Awarded

	2000-2001	2001-2002	2002-2003	2003-2004	2004-2005
Undergraduates (All) Receiving:					
Need-Based Financial Aid	42%	37%	38%	42%	40%
Financial Assistance of All Types*	71%	71%	70%	71%	70%
Average Need-Based Scholarship and/or Grant	\$13,275	\$16,239	\$16,820	\$17,698	\$18,342
Average Need-Based Financial Aid Package**	\$18,830	\$22,879	\$22,859	\$23,215	\$27,292
Entering Freshmen Receiving:					
Any need-based financial aid	45%	40%	39%	40%	42%
Average need-based scholarship and/or grant	\$13,941	\$16,121	\$17,386	\$17,638	\$19,072
Average need-based financial aid package**	\$18,240	\$21,214	\$22,072	\$22,698	\$26,614
Undergraduate Scholarships and Grants:					
University	\$49,745,196	\$53,350,054	\$55,242,758	\$62,096,910	\$66,198,613
Federal	\$3,840,815	\$4,235,202	\$4,174,670	\$4,221,850	\$4,355,236
State	\$2,038,684	\$2,121,486	\$1,839,217	\$1,583,459	\$1,589,085
Total Scholarships and Grants***	\$55,624,695	\$59,706,742	\$61,256,645	\$67,902,219	\$72,142,934

* Includes all sources (institutional, private, state, and federal) of assistance made available by Boston College in the form of loans, work, grants, and scholarships.

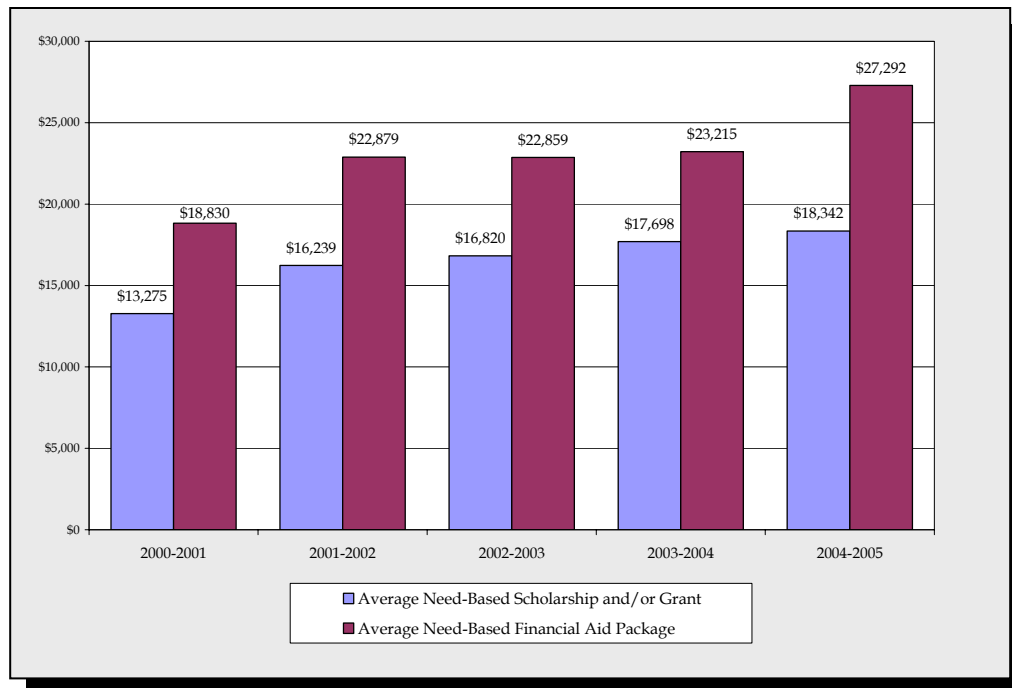
** Awarded package may include loans, work, grants, and scholarships.

*** Does not include employee tuition remission benefits.

Source: Office of Enrollment Management

AVERAGE NEED-BASED FINANCIAL AID, 2000-2005

ALL UNDERGRADUATES



UNDERGRADUATE STUDENT GRADUATION AND RETENTION RATES*

Freshman Matriculants

	Transfer Rate (transfer out in good standing)	Graduation Rate (150% of normal time)	Overall Retention Rate
Fall 1998	4%	89%	93%
Fall 1997	4%	89%	93%
Fall 1996	5%	87%	92%
Fall 1995	4%	87%	91%
Fall 1994	5%	87%	92%

* "Retention Rate" is the "graduation rate" plus the "transfer out rate" of students to another college, and is based on the national standard of six years after matriculation.
Source: Office of Institutional Research.

COMPETITIVE FELLOWSHIPS AND AWARDS, 1996 - 2005

Received by Undergraduates

Award	Total Number Received
Andrew Mellon Scholarship	4
Barry M. Goldwater Scholarship.....	10
Beckman Scholarship	9
Beinecke Memorial Scholarship	3
Freeman/ ASIA Scholarship.....	19
Gates-Cambridge Scholarship	1
George C. Marshall Scholarship.....	3
Harry S. Truman Scholarship	5
Institute for International Public Policy Fellowship.....	2
J. William Fulbright Grant (Undergraduate).....	82
James Madison Scholarship	1
National Science Foundation Graduate Research Fellowships.....	4
National Security Education Program Fellowship	17
Rhodes Scholarship.....	2
Rotary International Ambassadorial Scholarship	5
Thomas Pickering Scholarship	2
Winston Churchill Scholarship	1

Source: University Fellowship Committee

