

STUDENTS

PHOTO

Full-Time Freshman Enrollment By Year and Gender

Fall	Men	Women	Total
1993	1,017	1,137	2,154
1994	1,083	1,167	2,250
1995	1,003	1,137	2,140
1996	1,145	1,329	2,474
1997	1,084	1,084	2,168
1998	1,063	1,184	2,247
1999	1,103	1,181	2,284
2000	1,114	1,132	2,246
2001	940	1,163	2,103
2002	1,150	1,165	2,315

Source: Office of Undergraduate Admission

Freshman Admission Profile Middle 50% Range of SAT Scores

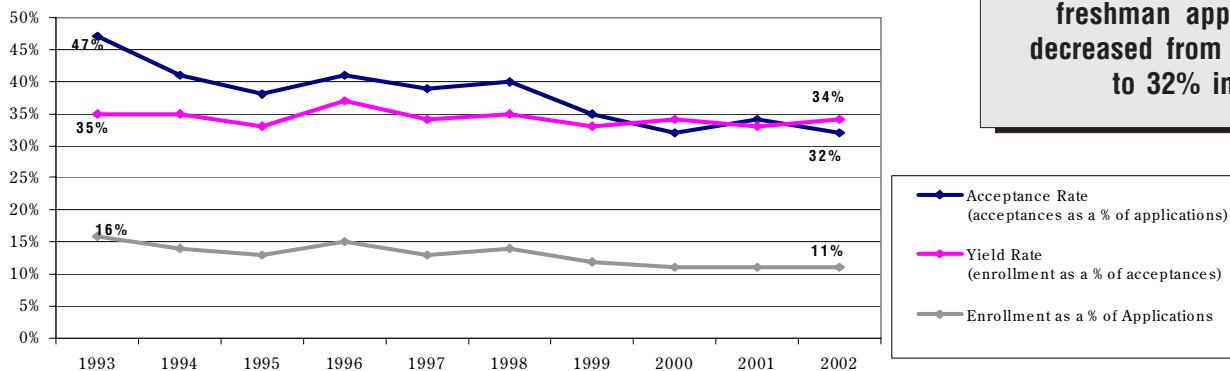
Class	Verbal	Math	Combined
1997	520 - 610	600 - 690	1,140 - 1,270
1998	520 - 610	600 - 690	1,140 - 1,280
1999	520 - 620	610 - 700	1,140 - 1,300
2000*	580 - 670	600 - 690	1,200 - 1,340
2001	580 - 680	610 - 690	1,210 - 1,340
2002	590 - 680	610 - 690	1,210 - 1,350
2003	590 - 680	610 - 690	1,210 - 1,360
2004	600 - 690	620 - 700	1,230 - 1,370
2005	600 - 690	620 - 700	1,240 - 1,380
2006	600 - 690	620 - 710	1,250 - 1,390

* Statistics for the Class of 2000 begin College Board recentered score series.

Note: SAT score ranges, 25th percentile - 75th percentile, are now the standard reporting statistic in all major admission guides.

Source: Office of Undergraduate Admission (Table compiled by the Office of Enrollment Management Research.)

Freshman Applications, Acceptances, and Enrollment Full-Time



The acceptance rate of freshman applicants has decreased from 47% in 1992 to 32% in 2002.

Fall	Applications	Acceptances	Acceptances as a % of Applications	Total Enrollment	Enrollment as a % of Acceptances	Enrollment as a % of Applications
1993	13,112	6,179	47	2,154	35	16
1994	15,522	6,378	41	2,250	35	14
1995	16,680	6,399	38	2,140	33	13
1996	16,501	6,750	41	2,474	37	15
1997	16,455	6,455	39	2,168	34	13
1998	16,373	6,484	40	2,247	35	14
1999	19,746	6,976	35	2,284	33	12
2000	20,743	6,587	32	2,246	34	11
2001	19,059	6,401	34	2,103	33	11
2002	21,133	6,850	32	2,315	34	11

Note: Freshman enrollment reported above is based on deposits received, on or before the deadline set by the Committee on Admission, from students accepting the offer of admission extended by the University. Withdrawals may occur during the summer and the first two weeks in September. Enrollment figures for Fall 2002 are based on deposits received as of May 10, 2002.

Source: Office of Undergraduate Admission

Applications, Acceptances, and Enrollment - Class of 2006

Geographic Distribution

State	Applications	Acceptances	Enrollment	State	Applications	Acceptances	Enrollment
Alabama	29	10	2	Nevada	34	16	4
Alaska	8	2	1	New Hampshire	372	94	42
Arizona	102	30	10	New Jersey	2,179	746	269
Arkansas	15	6	0	New Mexico	41	8	2
California	1,750	491	106	New York	3,353	1,149	400
Colorado	216	69	20	North Carolina	115	34	5
Connecticut	1,442	462	197	North Dakota	7	2	0
Delaware	55	22	5	Ohio	382	132	35
District of Columbia	87	36	7	Oklahoma	43	13	2
Florida	618	227	72	Oregon	81	35	8
Georgia	138	33	11	Pennsylvania	943	295	86
Hawaii	92	46	6	Rhode Island	343	110	39
Idaho	16	8	0	South Carolina	35	7	2
Illinois	615	188	58	South Dakota	5	2	0
Indiana	112	40	9	Tennessee	71	23	3
Iowa	27	12	3	Texas	451	141	25
Kansas	63	27	9	Utah	32	12	3
Kentucky	46	17	3	Vermont	120	29	16
Louisiana	70	24	3	Virginia	310	96	21
Maine	261	57	24	Washington	187	60	18
Maryland	509	199	54	West Virginia	20	4	1
Massachusetts	3,810	1,288	585	Wisconsin	145	47	13
Michigan	231	64	20	Wyoming	7	3	0
Minnesota	270	82	29	Puerto Rico	92	33	13
Mississippi	12	8	3	Virgin Islands, Guam, Canal Zone	31	10	1
Missouri	159	68	15	Foreign	919	205	44
Montana	18	10	6	Total	21,133	6,850	2,315
Nebraska	44	18	5				

Note: Application, Acceptance and Enrollee totals are as of May 10, 2002. The Class of 2006 includes students from 45 states, the District of Columbia, Puerto Rico, the Virgin Islands, and 20 foreign countries.

Source: Office of Undergraduate Admission

Top Cross Application Competitor Schools of Enrolling Freshmen Class of 2004

Top 12 Colleges and Universities

Georgetown University	Boston University	Villanova University
Tufts University	University of Pennsylvania	College of the Holy Cross
Brown University	University of Notre Dame	Cornell University
Harvard/Radcliffe College	New York University	Dartmouth College

Cross-applications are admitted students applying to the listed colleges. They do not include joint applications of students who were not admitted to Boston College.

Source: Office of Enrollment Management Research, 2000 Admitted Student Questionnaire Plus (3,214 admitted student responses).

Undergraduate Transfer Student Applications, Acceptances, and Enrollment Full-Time

Fall*	Applications	Acceptances	Acceptances as a % of Applications	Total Enrollment	Enrollment as a % of Acceptances	Enrollment as a % of Applications
1993	1,599	535	33	271	51	17
1994	1,704	507	30	222	44	13
1995	1,740	422	24	216	51	12
1996	1,526	252	17	113	45	7
1997	1,338	495	37	247	50	19
1998	1,339	496	35	225	48	17
1999	1,525	447	29	248	55	16
2000	1,363	256	19	142	56	10
2001	1,015	258	25	132	51	13
2002	1,079	130	12	71	55	7

* Transfer enrollment typically increases 75-125 students second semester.

Source: Office of Undergraduate Admission

Undergraduate Transfer Student Enrollment By Type of Previous Institution and Gender

Fall*	2-Year Public	2-Year Private	4-Year Public	4-Year Private	Total	Men	Women	Total
1993	37	12	72	150	271	122	149	271
1994	44	8	50	120	222	88	134	222
1995	31	6	58	121	216	91	125	216
1996	11	1	43	58	113	42	71	113
1997	22	5	66	154	247	112	135	247
1998	17	8	62	138	225	100	125	225
1999	24	4	59	161	248	95	153	248
2000	10	-	61	71	142	63	79	142
2001	9	2	45	76	132	59	73	132
2002	3	1	24	43	71	32	39	71

* Transfer enrollment typically increases 75-125 students second semester.

Source: Office of Undergraduate Admission

Enrollment, Fall 2002

By School, Gender, and Full- and Part-Time

School	Full-Time			Part-Time			Total		
	Men	Women	Total	Men	Women	Total	Men	Women	Total
Undergraduate Enrollment									
Arts & Sciences	2,889	3,006	5,895	-	-	-	2,889	3,006	5,895
Education	126	630	756	-	-	-	126	630	756
Management	1,264	781	2,045	-	-	-	1,264	781	2,045
Nursing	6	214	220	-	-	-	6	214	220
Total Undergrad. Day Students	4,285	4,641	8,916	-	-	-	4,285	4,641	8,916*
College of Advancing Studies	143	105	248	258	268	526	401	373	774
Graduate & Professional Enrollment									
Graduate Arts & Sciences	171	153	324	348	364	712	519	517	1,036
Graduate Education	79	293	3372	156	478	634	235	771	1,006
Graduate Management	177	96	273	466	234	700	643	330	973
Graduate Nursing	2	96	98	3	69	72	5	165	170
Graduate Social Work	35	262	297	29	119	148	64	381	445
Graduate Advancing Studies	5	5	10	67	94	161	72	99	171
Law	367	439	806	-	-	-	367	439	806
Total Graduate & Professional	836	1,344	2,180	1,069	1,358	2,427	1,905	2,702	4,607
Total University	5,264	6,080	11,344	1,327	1,626	2,953	6,591	7,706	14,297

* Undergraduate enrollment included 255 students on Boston College International Exchange programs who are not on the Boston College campus. Excluding those studying abroad, the total number of undergraduates attending Boston College this semester is 8,661.

Source: Student Services

Student Credit Hours

By School*

School	1997-98	1998-99	1999-00	2000-01	2001-02
Undergraduate					
Arts & Sciences	166,945	166,929	173,869	171,305	173,114
Education	24,436	24,557	24,982	23,885	23,654
Management	67,173	67,449	66,569	64,572	63,241
Nursing	7,351	7,146	6,928	6,316	6,751
College of Advancing Studies	18,539	14,514	13,970	13,725	13,543
Total Undergraduate	281,931	280,595	286,318	279,803	280,303
Graduate & Professional					
Graduate Arts & Sciences**	9,343	9,117	9,072	8,913	9,118
Graduate Education**	12,938	14,024	14,360	12,957	11,630
Graduate Management	13,477	13,747	13,311	14,334	14,405
Graduate Nursing**	1,964	2,313	2,828	2,787	2,674
Graduate Social Work	17,081	15,203	14,409	13,178	12,590
Graduate Advancing Studies***	1,983	2,285	2,071	1,707	1,582
Law	23,762	23,502	23,609	23,016	23,489
Total Graduate & Professional	80,548	80,191	79,660	76,892	75,488
Total	362,479	360,786	365,978	356,695	355,791

* Most one semester courses at Boston College carry a value of three credit hours. The figures shown are the sum of fall and spring semester enrollments for each academic year. Summer enrollment is excluded.

** In 1994, the Graduate Schools of Education and Nursing separated from the Graduate School of Arts and Sciences. For prior years their enrollment is included in the Graduate Arts and Sciences statistics.

*** In 1996, the Evening College became the College of Advancing Studies and began to offer graduate programs.

Source: Student Services

Undergraduate, Graduate, and Professional Enrollment, Fall 1998 through 2002 By School, Gender, and Full- and Part-Time

	Undergraduate Day Schools						Graduate & Professional								Univ.
	A&S	Mgt.	Ed.	Nurs.	Total	Adv.St.	GA&S	GEd.	GNurs.	GMgt.	GSSW	Law	Adv.St.	Total	Total
Fall 1998															
Full-Time	5,577	2,288	810	245	8,920	262	344	464	71	241	362	825	11	2,318	11,500
Part-Time	-	-	-	5	5	669	772	572	84	734	150	-	210	2,522	3,196
Men	2,682	1,400	118	9	4,209	451	544	262	8	660	73	395	84	2,206	6,686
Women	2,895	888	692	241	4,716	480	572	774	147	315	439	430	137	2,814	8,010
Total	5,577	2,288	810	250	8,925	931	1,116	1,036	155	975	512	825	221	4,840	14,696
Fall 1999															
Full-Time	5,853	2,271	828	236	9,189	241	322	469	95	219	346	829	13	2,293	11,722
Part-Time	-	-	-	2	2	595	678	587	66	708	138	-	193	2,370	2,967
Men	2,823	1,386	123	7	4,339	411	525	264	9	622	71	404	77	1,972	6,722
Women	3,030	885	705	231	4,851	425	475	792	152	305	413	425	129	2,691	7,967
Total	5,853	2,271	828	238	9,190	836	1,000	1,056	161	927	484	829	206	4,663	14,689
Fall 2000															
Full-Time	5,741	2,187	785	216	8,929	262	295	417	86	244	307	805	9	2,163	11,354
Part-Time	-	-	-	1	1	606	732	611	79	712	160	-	164	2,458	3,065
Men	2,766	1,394	107	5	4,272	461	526	244	7	635	66	392	76	1,946	6,679
Women	2,975	793	678	212	4,658	407	501	784	158	321	401	413	97	2,675	7,740
Total	5,741	2,187	785	217	8,930	868	1,027	1,028	165	956	467	805	173	4,621	14,419
Fall 2001															
Full-Time	5,850	2,148	772	230	9,000	260	326	325	83	281	300	813	4	2,132	11,392
Part-Time	-	-	-	-	-	537	689	618	68	692	143	1	167	2,378	2,915
Men	2,783	1,343	129	5	4,260	406	518	220	6	653	67	382	78	1,924	6,590
Women	3,067	805	643	225	4,740	391	497	723	145	320	376	432	93	2,586	7,717
Total	5,850	2,148	772	230	9,000	797	1,015	943	151	973	443	814	171	4,510	14,307
Fall 2002															
Full-Time	5,895	2,045	756	220	8,916	248	324	372	98	273	297	806	10	2,180	11,344
Part-Time	-	-	-	-	-	526	712	634	72	700	148	-	161	2,427	2,953
Men	2,889	1,264	126	6	4,285	401	519	235	5	643	64	367	72	1,905	6,591
Women	3,006	781	630	214	4,631	373	517	771	465	330	381	439	99	2,702	7,706
Total	5,895	2,045	756	220	8,916	774	1,036	1,006	170	973	445	806	171	4,607	14,297

Source: Student Services

AHANA and International Student Enrollment, Fall 2000, 2001, & 2002*

Undergraduate Day Schools	Men			Women			Total			% of Undergraduate Day School Students		
	2000	2001	2002	2000	2001	2002	2000	2001	2002	2000	2001	2002
Black or African-American	200	202	224	225	221	223	425	423	447	4.8%	4.7%	5.1%
Native American	11	10	8	26	29	24	37	39	32	0.4%	0.4%	0.4%
Asian	333	356	364	399	404	411	732	760	775	8.2%	8.4%	8.9%
Hispanic	187	189	205	304	312	335	491	501	540	5.5%	5.6%	6.2%
Other/Not reported	19	34	117	25	40	98	44	74	215	0.5%	0.8%	-
Subtotal Undergraduate Day Schools	750	791	801	979	1,006	993	1,729	1,797	1,794	19.4%	20.0%	20.6%
International	124	105	83	84	81	56	208	186	139	2.3%	2.0%	1.6%
Total Undergrad Day	874	896	884	1,063	1,087	1,049	1,937	1,983	1,933	21.7%	22.03%	22.18%

* Note that 2002 AHANA percentages are of students who reported their race/ethnicity identification. International students include nonresident aliens of all racial and ethnic groups, including caucasian. Source: Student Services

Full-Time Equivalent Enrollment* By School, Fall 1993 through 2002

	1993	1994	1995	1996	1997	1998	1999	2000	2001	2002
Undergraduate										
Arts & Sciences	5,521	5,699	5,561	5,541	5,589	5,577	5,853	5,741	5,850	5,895
Education	695	701	698	772	806	810	828	785	772	756
Management	2,172	2,270	2,269	2,339	2,276	2,288	2,271	2,187	2,148	2,045
Nursing	416	408	367	305	250	247	237	216	230	220
Total Day Students	8,804	9,078	8,895	8,957	8,921	8,922	9,189	8,929	9,000	8,916
College of Advancing Studies***	688	682	633	624	531	485	439	464	440	423
Total Undergraduate	9,492	9,760	9,528	9,581	9,452	9,407	9,628	9,393	9,440	9,339
Graduate and Professional										
Graduate Arts & Sciences**	1,288	599	609	605	592	601	548	539	553	561
Graduate Education**	-	494	600	601	600	655	665	621	532	583
Graduate Management	378	408	459	455	464	486	455	481	511	506
Graduate Nursing**	-	102	90	68	87	99	117	112	106	122
Graduate Social Work	368	398	456	478	463	412	392	360	348	346
Law	829	830	819	803	826	825	829	805	813	806
Graduate Advancing Studies***	-	-	-	49	68	81	77	64	60	64
Total Graduate & Professional	2,863	2,831	3,033	3,059	3,100	3,159	3,083	2,982	2,923	2,988
Total University	12,355	12,591	12,561	12,640	12,552	12,566	12,711	12,375	12,363	12,327

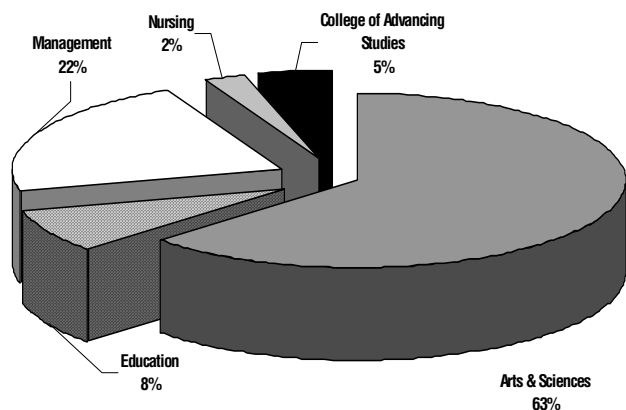
* Method of computation: three part-time students equal one full-time equivalent student.

** In 1994, the Graduate Schools of Education and Nursing separated from the Graduate School of Arts and Sciences. For prior years their enrollment is included in the Graduate Arts and Sciences statistics.

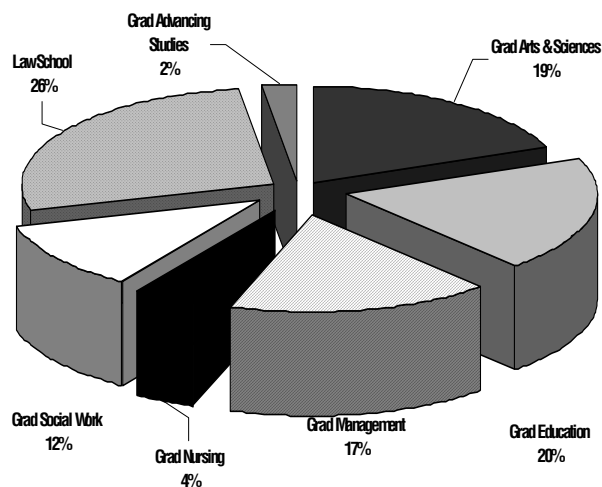
*** In 1996, the Evening College became the College of Advancing Studies and began to offer graduate programs.

Source: Student Services

Full-Time Equivalent Undergraduate Enrollment



Full-Time Equivalent Graduate Enrollment



Graduate Enrollment*

By Degree Program and Discipline, Full- and Part-Time

	1997-98		1998-99		1999-00		2000-01		2001-02	
	Master's	Ph.D.	Master's	Ph.D.	Master's	Ph.D.	Master's	Ph.D.	Master's	Ph.D.
Advancing Studies	247	-	261	-	259	-	221	-	205	-
American Studies	1	-	-	-	-	-	-	-	-	-
Biology	20	24	14	26	11	26	22	23	14	22
Chemistry	-	103	1	99	1	97	0	92	1	95
Economics	1	68	-	69	4	65	11	58	15	49
Education	615	284	630	276	663	283	590	307	524	310
Education/Non-Degree	173	-	194	-	173	-	217	-	256	-
English	88	31	84	29	69	28	68	28	86	29
Geology	21	-	23	-	21	-	18	-	21	-
Geology/Geophysics	-	-	-	-	-	-	-	-	-	-
Geophysics	8	-	9	-	8	-	11	-	9	-
History	32	77	34	72	29	68	38	60	32	62
Interdisciplinary	1	1	2	1	2	2	1	-	1	-
Latin & Greek	8	-	9	-	6	-	6	-	7	-
Law	832	-	835	-	844	-	808	-	823	-
Linguistics	6	-	4	-	5	-	6	-	5	-
Management	1,038	42	1,044	44	1,031	45	1,060	45	1,065	52
Mathematics	11	-	12	-	12	-	12	-	14	-
Nursing	124	45	127	43	146	43	143	40	130	40
Philosophy	59	53	64	58	67	62	57	52	61	48
Physics	2	23	-	28	-	26	1	22	3	26
Political Science	32	50	30	41	29	28	22	36	20	39
Psychology	3	16	2	18	2	16	2	18	1	18
Religious Education	178	15	183	15	154	16	183	19	164	20
Romance Languages	45	36	50	30	39	29	47	30	32	35
Russian	6	-	4	-	7	-	3	-	3	-
Slavic Studies	1	-	1	-	-	-	1	-	-	-
Social Work	533	46	477	46	447	44	432	47	407	45
Sociology	19	62	24	67	15	60	16	53	12	48
Theology	22	85	20	88	23	86	32	89	30	91
Total	4,126	1,061	4,138	1,050	4,067	1,024	4,028	1,019	3,941	1,029

* Figures include students who attended for just one semester, as well as those who attended a full year. The figure for Master's students may include nondegree special students in some programs.

Source: Student Services

Summer Session Enrollment

Summer	1993	1994	1995	1996	1997	1998	1999	2000	2001	2002
Undergraduate	2,436	2,252	2,265	2,007	1,879	1,960	1,969	1,929	1,878	1,881
Graduate/Professional*	1,866	1,856	1,694	1,702	1,886	1,843	1,855	2,031	1,751	1,725
Total	4,302	4,108	3,959	3,709	3,765	3,803	3,824	3,960	3,629	3,606

* Includes students registered through the Institute of Religious Education and the Carroll Graduate School of Management.

Source: Summer Session Office

Geographic Distribution of Undergraduate Students By State

State	1990	1995	2000	2001	2002	State	1990	1995	2000	2001	2002
Alabama	11	13	10	14	11	Nebraska	30	22	22	16	17
Alaska	0	8	4	1	2	Nevada	7	11	3	1	4
Arizona	18	25	29	33	37	New Hampshire	172	165	184	176	162
Arkansas	7	3	4	1	1	New Jersey	672	858	941	932	938
California	184	408	380	410	403	New Mexico	2	5	12	9	8
Colorado	45	43	57	61	65	New York	1,039	1,321	1,372	1,365	1,425
Connecticut	728	881	765	769	752	North Carolina	22	20	26	36	31
D. C.	28	20	29	27	25	North Dakota	2	1	1	1	2
Delaware	23	18	22	19	20	Ohio	132	127	125	138	144
Florida	232	250	303	267	276	Oklahoma	15	13	13	17	14
Georgia	35	46	53	56	52	Oregon	8	20	20	21	27
Guam	0	7	4	3	1	Pennsylvania	308	325	309	305	294
Hawaii	36	41	34	32	28	Puerto Rico	70	48	47	41	42
Idaho	3	4	4	7	6	Rhode Island	260	214	184	181	183
Illinois	150	184	248	249	226	South Carolina	11	6	5	7	4
Indiana	25	21	29	29	27	South Dakota	1	1	1	1	1
Iowa	8	11	17	19	17	Tennessee	16	9	15	13	13
Kansas	14	12	28	26	25	Texas	122	110	131	136	134
Kentucky	11	5	15	17	16	Utah	4	10	4	6	8
Louisiana	38	15	22	27	24	Vermont	47	49	52	49	49
Maine	128	87	108	118	111	Virgin Islands	6	5	1	2	3
Maryland	184	149	255	264	243	Virginia	68	83	76	75	82
Massachusetts	3,135	2,612	2,401	2,453	2,435	Washington	20	42	63	51	52
Michigan	82	67	71	79	76	West Virginia	9	5	2	4	3
Minnesota	77	71	110	124	128	Wisconsin	53	56	50	55	55
Mississippi	4	3	2	4	3	Wyoming	2	1	1	2	1
Missouri	49	50	54	60	61	International	227	314	208	187	139
Montana	6	1	4	4	10	Total	8,586	8,896	8,930	9,000	8,916

Source: Student Services

Undergraduate Majors*

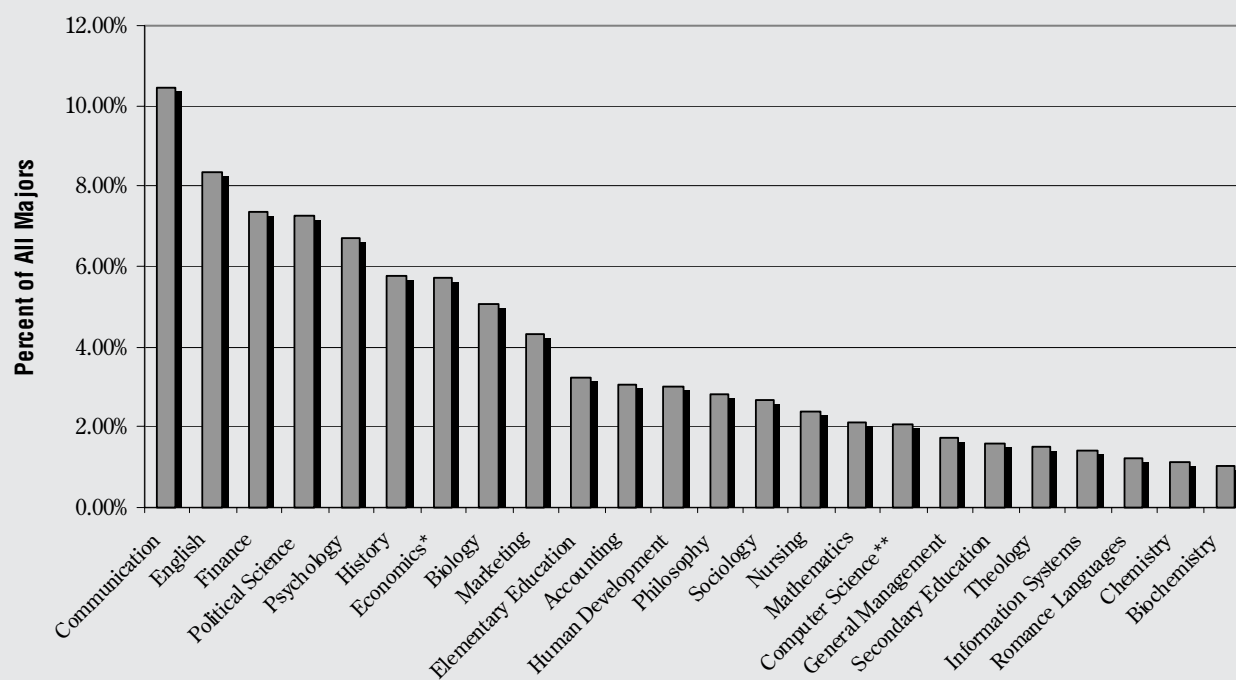
By School

	1993	1994	1995	1996	1997	1998	1999	2000	2001	2002
Arts & Sciences										
ArtHistory	38	43	38	37	38	36	34	32	45	42
Biochemistry	94	108	111	115	117	97	84	83	82	95
Biology	618	671	752	734	665	543	539	481	443	465
Chemistry	94	90	100	89	84	90	94	84	89	102
Classics	17	20	20	20	24	19	15	11	21	17
Communication	480	533	522	499	542	624	734	865	945	963
Computer Science	77	82	97	118	133	181	202	200	189	139
Economics	332	345	356	364	404	430	402	382	374	398
English	955	925	927	935	931	868	906	863	845	770
Film Studies	-	-	-	-	-	-	-	10	32	46
Geology/Geophysics	55	87	82	80	736	66	58	52	42	30
German	14	13	9	6	148	8	11	10	3	7
History	400	398	411	379	392	410	431	451	465	530
Independent	17	12	4	2	1	3	2	5	3	1
International Studies	-	-	-	40	67	64	56	45	31	32
Mathematics	166	178	176	190	168	123	148	135	134	194
Music	26	26	21	19	23	26	23	22	29	32
Philosophy	181	182	198	178	158	166	193	211	230	261
Physics	33	29	28	33	18	29	33	36	34	46
Political Science	773	781	747	700	671	618	649	626	646	669
Psychology	650	715	743	736	694	703	764	684	660	617
Romance Languages-Total	127	124	130	119	120	116	114	110	96	111
French	51	54	50	43	39	45	50	56	47	49
Italian	9	5	4	5	7	6	4	5	3	5
Spanish/Hispanic Studies	67	65	76	71	74	65	60	49	46	57
Slavic and Eastern Languages	13	18	18	12	8	11	11	7	5	12
Sociology	229	255	245	233	239	238	249	219	219	247
Studio Art	23	29	41	48	34	41	44	42	40	41
Theater Arts	35	40	43	66	87	84	106	101	91	91
Theology	20	29	36	47	54	70	80	88	92	137
Education										
American Heritage	-	3	2	4	2	2	1	2	2	4
Child/Society	-	75	86	99	88	67	65	49	40	31
Early Childhood	79	81	72	57	50	53	68	57	52	43
Elementary Education	223	200	196	231	222	217	224	256	279	297
General Science	-	4	3	5	2	4	6	4	2	3
Hispanic Experience	-	9	7	9	8	7	5	7	14	9
Human Development	198	180	191	231	258	289	290	277	285	276
Intensive Special Needs	-	16	22	29	28	41	27	21	15	4
Math/Computer Science	-	16	19	29	33	34	33	29	23	26
Middle School	3	-	-	-	-	-	-	-	-	-
Moderate Special Need	-	108	106	116	132	122	125	85	24	7
Secondary Education	109	118	104	143	152	146	160	123	143	148
Special Ed./Spec. Needs	113	-	-	-	-	-	-	-	-	-
Management										
Accounting	434	459	426	383	353	336	298	245	246	279
Accounting/Info Tech	-	-	-	-	-	-	-	-	4	7
Computer Science	38	41	38	56	61	63	62	63	73	52
Economics	126	134	156	143	149	148	139	128	136	127
Economics/Op. Res.	-	6	3	-	-	-	-	-	-	-
Finance	566	645	702	747	743	783	797	732	665	679
General Management	282	265	268	258	250	232	259	215	189	159
Human Resource Mgt.	46	50	59	67	59	62	54	30	45	39
Information Systems	53	74	50	82	94	136	159	181	176	128
Marketing	397	422	430	487	463	498	444	427	429	395
Strategic Management	63	54	55	67	79	87	79	86	65	65
Nursing										
	419	410	368	306	250	250	238	217	230	220

* This chart includes each declared major. Students with double or triple majors are therefore counted two and three times; adding the numbers in a column does not produce accurate enrollment totals. College of Advancing Studies students are not included in this table. Source: Student Services

Undergraduate Majors in Academic Year 2001-2002

Most Frequently Declared Undergraduate Majors



* Includes Economics majors in both A&S and CSOM.

** Includes Computer Science majors in both A&S and CSOM.

Undergraduate Majors with Largest Ten-Year Increase By Major

	Number of Majors		Percent Increase
	1993	2002	
Theology (A&S)	20	137	585%
Film Studies (A&S) ¹	-	46	360%
Theater Arts (A&S)	35	91	160%
Information Systems (CSOM)	53	128	142%
Communication (A&S)	480	963	101%
Computer Science (A&S)	77	139	81%
Studio Art (A&S)	23	41	78%
Accounting/Info Tech (CSOM) ²	-	7	75%
Math/Computer Science (LSOE) ³	-	26	63%
Philosophy (A&S)	181	261	44%

¹Increase since 2000

²Increase since 2001

³Increase since 1994

International Student and Scholar Statistics By School, 2001 - 2002

Arts & Sciences	87
Education	6
Management	86
Nursing	1
College of Advancing Studies	5
Exchange Students - Undergraduate	64
Total Undergraduate	249
Graduate Arts & Sciences	219
Graduate Education	68
Graduate Management	122
Graduate Nursing	2
Graduate Social Work	10
Law	21
Graduate Advancing Studies	2
Exchange Students - Graduate	11
Total Graduate/Professional	455
Total Enrolled Students	704
Practical Training*	120
Faculty and Research Scholars	80
Total	904

* Students who have graduated from Boston College and who are undertaking a period of practical training in the United States.
Source: Office of the Dean for Student Development

International Student and Scholar Statistics By Gender and Program, 2001 - 2002

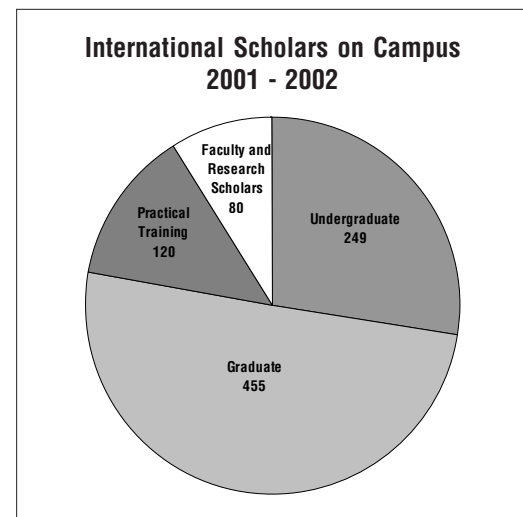
Program	Men	Women	Total
Undergraduate	130	119	249
Graduate	265	190	455
Practical Training*	61	59	120
Faculty and Research Scholars	52	28	80
Total	508	396	904

* Students who have graduated from Boston College and who are undertaking a period of practical training in the United States.
Source: Office of the Dean for Student Development

International Student and Scholar Statistics By Class or Program, 2001 - 2002

Freshmen	43
Sophomores	36
Juniors	50
Seniors	51
Undergraduate Exchange Students	64
Visiting Students	5
Total Undergraduate	249
Graduate/Professional	
M.A.	61
M.A.T.	-
M.B.A.	55
M.Ed.	17
M.S.	47
M.S.W.	9
C.A.E.S.	3
Ph.D.	231
J.D.	21
Graduate Exchange Students	11
Total Graduate/Professional	455
Practical Training*	120
Faculty and Research Scholars	80
Total	904

* Students who have graduated from Boston College and who are undertaking a period of practical training in the United States.
Source: Office of the Dean for Student Development



International Students by Country

Undergraduate and Graduate, 2001 - 2002

	Under-graduate	Graduate and Professional	Total		Under-graduate	Graduate and Professional	Total
Argentina	1	5	6	Lebanon	1	5	6
Armenia	-	4	4	Liechtenstein	1	-	1
Australia	7	5	12	Lithuania	-	2	2
Austria	-	1	1	Malawi	-	1	1
Bahamas	1	-	1	Malaysia	1	2	3
Bahrain	-	1	1	Malta	-	1	1
Bangladesh	1	1	2	Mauritius	1	1	2
Belarus	-	1	1	Mexico	1	3	4
Belize	-	1	1	Morocco	3	3	6
Bermuda	2	-	2	Nepal	-	4	4
Brazil	6	4	10	Netherlands	3	2	5
Bulgaria	-	15	15	New Zealand	-	2	2
Burma	1	-	1	Nigeria	1	4	5
Cameroon	1	-	1	Norway	1	1	2
Canada	17	38	55	Pakistan	1	1	2
Cape Verde	1	-	1	Panama	1	-	1
Chile	2	3	5	Peru	-	4	4
China, People's Republic of	7	73	80	Philippines	2	7	9
Colombia	3	5	8	Poland	1	2	3
Costa Rica	1	2	3	Portugal	-	2	2
Cyprus	-	2	2	Romania	1	2	3
Czech Republic	-	2	2	Russia	-	5	5
Dominican Republic	5	1	6	Rwanda	-	1	1
Ecuador	1	-	1	Saudi Arabia	8	1	9
Egypt	1	-	1	Singapore	9	3	12
El Salvador	-	2	2	Slovakia	-	1	1
Estonia	-	1	1	Slovenia	-	2	2
Ethiopia	-	2	2	South Africa	-	3	3
Finland	1	-	1	South Korea	36	23	59
France	15	17	32	Spain	9	6	15
Germany	6	6	12	Sweden	1	-	1
Ghana	-	2	2	Switzerland	1	1	2
Greece	1	7	8	Taiwan	4	6	10
Guatemala	1	1	2	Tanzania	-	1	1
Guinea	1	-	1	Thailand	5	3	8
Haiti	1	-	1	Trinidad & Tobago	2	-	2
Hong Kong	4	1	5	Tunisia	-	1	1
Iceland	-	1	1	Turkey	3	22	25
India	10	29	39	Uganda	1	2	3
Indonesia	4	6	10	Ukraine	1	5	6
Ireland	3	13	16	United Arab Emirates	1	-	1
Israel	1	2	3	United Kingdom	13	9	22
Italy	6	13	19	Uruguay	-	1	1
Jamaica	2	1	3	USSR (Former)	1	-	1
Japan	14	16	30	Uzbekistan	-	1	1
Jordan	-	1	1	Venezuela	6	7	13
Kazakhstan	-	2	2	Vietnam	1	3	4
Kenya	-	4	4	Yugoslavia	-	2	2
Kuwait	-	4	4	Zimbabwe	-	1	1
Latvia	-	1	1				
				Total	249	454	703
				Countries Represented			99

Source: Office of the Dean for Student Development

Undergraduate and Graduate Degrees Conferred*

By Degree and Gender

	1998-99			1999-00			2000-01			2001-2002		
	Men	Women	Total	Men	Women	Total	Men	Women	Total	Men	Women	Total
Undergraduate												
Arts & Sciences												
A.B.	487	527	1,014	583	626	1,209	594	652	1,246	538	690	1,228
B.S.	73	105	178	96	75	171	80	80	160	76	81	157
Total Arts & Sciences	560	632	1,192	679	701	1,380	674	732	1,406	614	771	1,385
Education - A.B.	28	168	196	26	196	222	20	184	204	27	171	198
Management - B.S.	352	232	584	381	276	657	376	206	582	352	215	567
Nursing - B.S.	3	59	62	2	58	60	1	46	47	2	62	64
Subtotal Undergraduate Day Degrees Conferred	943	1,091	2,034	1,088	1,231	2,319	1,071	1,168	2,239	995	1,219	2,214
Advancing Studies - A.B.	39	71	110	43	54	97	47	50	97	56	41	97
Total Undergraduate Degrees Conferred	982	1,162	2,144	1,131	1,285	2,416	1,118	1,218	2,336	1,051	1,260	2,311
Graduate												
Ph.D.	51	65	116	53	63	116	40	69	109	55	65	120
M.A.	80	183	263	65	173	238	93	201	294	94	168	262
M.S.	107	96	203	108	115	223	93	112	205	97	85	182
M.Ed.	43	149	192	39	191	230	52	177	229	21	173	194
M.A.T.	-	5	5	2	1	3	1	4	5	1	3	4
M.S.W.	16	184	200	27	156	183	27	143	170	20	132	152
M.S.T.	-	5	5	3	2	5	1	1	2	-	3	3
M.B.A.	105	58	163	178	90	268	155	99	254	193	97	290
C.A.E.S.	1	6	7	2	10	12	3	9	12	-	13	13
Total Graduate Degrees Conferred	403	751	1,154	477	801	1,278	465	815	1,280	481	739	1,220
Professional												
J.D.	136	129	265	127	173	300	130	132	262	150	118	268
Total Graduate and Professional Degrees Conferred	539	880	1,419	604	974	1,578	595	947	1,542	631	857	1,488
Total Degrees Conferred	1,521	2,042	3,563	1,735	2,259	3,994	1,713	2,165	3,878	1,682	2,117	3,799

* August, December, and May graduations combined.

** Beginning in 1997-98, Boston College changed the titles of the doctoral degrees in social work and education to doctor of philosophy.

Degrees in these fields are included in the Ph.D. counts above.

Source: Student Services

Undergraduate Degrees Conferred*

By Degree and Number of Majors

	1997-98	1998-99	1999-00	2000-01	2001-02
Arts and Sciences					
A.B.					
Single Major	954	832	971	1,061	1,032
Double Major	216	179	237	184	192
Triple Major	-	-	1	1	4
	1,170	1,011	1,209	1,246	1,228
B.S.					
Single Major	180	167	149	149	142
Double Major	15	11	22	11	15
Triple Major	-	-	-	-	-
	195	178	171	160	157
Total Arts & Sciences	1,365	1,189	1,380	1,406	1,385
School of Education - A.B.					
Single Major	34	56	39	55	41
Double Major	165	140	181	149	157
Triple Major	1	-	2	-	-
Total School of Education	200	196	222	204	198
School of Management - B.S.					
Single Major	396	358	430	374	346
Double Major	183	219	220	201	221
Triple Major	4	7	7	7	-
Total School of Management	583	584	657	582	567
School of Nursing - B.S.					
Single Major	70	62	60	47	63
Double Major	-	-	-	-	1
Triple Major	-	-	-	-	-
Total School of Nursing	70	62	60	47	64
Subtotal - Undergraduate Day Degrees Conferred	2,218	2,031	2,319	2,239	2,214
Advancing Studies - A.B.					
Single Major	119	110	97	97	97
Double Major	-	-	-	-	-
Triple Major	-	-	-	-	-
Total School of Nursing	119	110	97	97	97
Total Undergraduate Degrees Conferred	2,337	2,141	2,416	2,336	2,311

* August, December, and May graduations combined.
Source: Student Services

**Of the 2,311 undergraduate degrees conferred in 2002,
26% represented double or triple majors.**

Undergraduate Degrees Conferred By Major*

	1997-98	1998-99	1999-00	2000-01	2001-02
Accounting	127	149	103	77	66
Art History	7	15	14	7	10
Biochemistry	28	36	25	15	21
Biology	132	119	96	109	88
Chemistry	13	17	24	18	18
Child in Society	-	2	4	4	5
Classics	5	3	4	1	4
Communication	156	141	180	215	227
Computer Science	39	32	60	54	58
Early Childhood Education	12	21	12	11	13
Economics	118	109	170	133	147
Elementary Education	56	43	49	47	64
Elementary Education & Moderate Special Needs	43	30	42	30	7
English	223	209	203	215	211
Environmental Geosciences	13	16	9	10	19
Film Studies	-	-	-	1	7
Finance	245	212	259	257	208
French	9	10	11	8	11
Geology	7	7	6	-	-
Geophysics	-	-	2	2	2
Geology/Geophysics	-	1	3	1	1
German	3	2	5	3	-
Hispanic Studies	12	11	13	8	6
History	108	109	115	119	125
Human Development	57	32	66	85	79
Independent	2	1	3	2	1
Information Systems	6	5	22	27	43
International Studies	4	5	23	28	14
Italian	2	2	-	1	-
Linguistics	1	2	1	1	1
Management	15	18	25	17	18
Marketing	141	116	167	147	160
Mathematics	45	38	27	25	22
Mathematics/Computer Science	-	-	1	-	3
Music	3	1	6	4	5
Nursing	70	130	60	47	64
Operations Management	7	5	15	19	14
Organizational Studies/Human Resource Management	18	20	20	9	12
Philosophy	26	33	40	42	35
Physics	2	5	6	5	7
Political Science	108	145	123	134	130
Psychology	202	156	151	146	155
Russian	1	1	1	1	1
Secondary Education	29	26	40	22	24
Severe Special Needs	3	2	8	5	3
Slavic Studies	-	1	1	-	-
Sociology	78	73	64	89	53
Studio Art	11	5	6	11	9
Theatre	13	7	17	16	21
Theology	19	9	17	11	22
TOTAL**	2,219	2,132	2,319	2,239	2,214

* Double and Triple majors counted by first major.

** College of Advancing Studies majors are not included in this total.

Source: Student Services

Undergraduate Degrees Conferred By School and Major*

	1999-00						2000-01						2001-02					
	A&S		Ed.	Mgt.	Nurs.	Total	A&S		Ed.	Mgt.	Nurs.	Total	A&S		Ed.	Mgt.	Nurs.	Total
	A.B.	B.S.	A.B.	B.S.	B.S.		A.B.	B.S.	A.B.	B.S.	B.S.		A.B.	B.S.	A.B.	B.S.	B.S.	
Accounting	-	-	-	103	-	103	-	-	-	77	-	77	-	-	-	66	-	66
Art History	14	-	-	-	-	14	7	-	-	-	-	7	10	-	-	-	-	10
Biochemistry	-	25	-	-	-	25	-	15	-	-	-	15	-	21	-	-	-	21
Biology	-	96	-	-	-	96	-	109	-	-	-	109	-	88	-	-	-	88
Chemistry	-	24	-	-	-	24	-	18	-	-	-	18	-	18	-	-	-	18
Child in Society	-	-	4	-	-	4	-	-	4	-	-	4	-	-	5	-	-	5
Classics	4	-	-	-	-	4	1	-	-	-	-	1	4	-	-	-	-	4
Communication	180	-	-	-	-	180	215	-	-	-	-	215	227	-	-	-	-	227
Computer Science	47	-	-	13	-	60	47	-	-	7	-	54	40	-	-	18	-	58
Early Childhood Education	-	-	12	-	-	12	-	-	11	-	-	11	-	-	13	-	-	13
Economics	137	-	-	33	-	170	111	-	-	22	-	133	119	-	-	28	-	147
Elementary Education	-	-	49	-	-	49	-	-	47	-	-	47	-	-	64	-	-	64
Elementary Education & Moderate Special Needs	-	-	42	-	-	42	-	-	30	-	-	30	-	-	7	-	-	7
English	203	-	-	-	-	203	215	-	-	-	-	215	211	-	-	-	-	211
Environmental Geosciences	-	9	-	-	-	9	-	10	-	-	-	10	-	19	-	-	-	19
Film Studies	-	-	-	-	-	-	1	-	-	-	-	1	7	-	-	-	-	7
Finance	-	-	-	259	-	259	-	-	-	257	-	257	-	-	-	208	-	208
French	11	-	-	-	-	11	8	-	-	-	-	8	11	-	-	-	-	11
Geology	-	6	-	-	-	6	-	-	-	-	-	0	-	-	-	-	-	0
Geophysics	-	3	-	-	-	3	-	2	-	-	-	2	-	2	-	-	-	2
Geology/Geophysics	-	2	-	-	-	2	-	1	-	-	-	1	-	1	-	-	-	1
German	5	-	-	-	-	5	3	-	-	-	-	3	-	-	-	-	-	0
Hispanic Studies	13	-	-	-	-	13	8	-	-	-	-	8	6	-	-	-	-	6
History	115	-	-	-	-	115	119	-	-	-	-	119	125	-	-	-	-	125
Human Development	-	-	66	-	-	66	-	-	85	-	-	85	-	-	79	-	-	79
Independent	3	-	-	-	-	3	2	-	-	-	-	2	-	1	-	-	-	1
Information Systems	-	-	-	22	-	22	-	-	-	27	-	27	-	-	-	43	-	43
International Studies	23	-	-	-	-	23	28	-	-	-	-	28	14	-	-	-	-	14
Italian	-	-	-	-	-	-	1	-	-	-	-	1	-	-	-	-	-	0
Linguistics	1	-	-	-	-	1	1	-	-	-	-	1	1	-	-	-	-	1
Management	-	-	-	25	-	25	-	-	-	17	-	17	-	-	-	18	-	18
Marketing	-	-	-	167	-	167	-	-	-	147	-	147	-	-	-	160	-	160
Mathematics	27	-	-	-	-	27	25	-	-	-	-	25	22	-	-	-	-	22
Mathematic/Computer Science	-	-	1	-	-	1	-	-	-	-	-	0	-	-	3	-	-	3
Music	6	-	-	-	-	6	4	-	-	-	-	4	5	-	-	-	-	5
Nursing	-	-	-	-	60	60	-	-	-	-	47	47	-	-	-	-	64	64
Operations Management	-	-	-	15	-	15	-	-	-	19	-	19	-	-	-	14	-	14
Organizational Studies/Human Resource Management	-	-	-	20	-	20	-	-	-	9	-	9	-	-	-	12	-	12
Philosophy	40	-	-	-	-	40	42	-	-	-	-	42	35	-	-	-	-	35
Physics	-	6	-	-	-	6	-	5	-	-	-	5	-	7	-	-	-	7
Political Science	123	-	-	-	-	123	134	-	-	-	-	134	130	-	-	-	-	130
Psychology	151	-	-	-	-	151	146	-	-	-	-	146	155	-	-	-	-	155
Russian	1	-	-	-	-	1	1	-	-	-	-	1	1	-	-	-	-	1
Secondary Education	-	-	40	-	-	40	-	-	22	-	-	22	-	-	24	-	-	24
Severe Special Needs	-	-	8	-	-	8	-	-	5	-	-	5	-	-	3	-	-	3
Slavic Studies	1	-	-	-	-	1	-	-	-	-	-	0	-	-	-	-	-	0
Sociology	64	-	-	-	-	64	89	-	-	-	-	89	53	-	-	-	-	53
Studio Art	6	-	-	-	-	6	11	-	-	-	-	11	9	-	-	-	-	9
Theatre	17	-	-	-	-	17	16	-	-	-	-	16	21	-	-	-	-	21
Theology	17	-	-	-	-	17	11	-	-	-	-	11	22	-	-	-	-	22
Total**	1,209	171	222	657	60	2,319	1,246	160	204	582	47	2,239	1,228	157	198	567	64	2,214

* Double and Triple majors counted by first major.

** College of Advancing Studies majors are not included in this total.

Source: Student Services

Graduate Degrees Conferred, 2001-2002*

By School, Degree, Primary Field, and Gender

	Doctorates			Master's/Certificates/J.D.			Total		
	Men	Women	Total	Men	Women	Total	Men	Women	Total
Graduate School of Arts & Sciences									
Humanities									
American Studies	-	-	-	-	-	-	-	-	-
Classics	-	-	-	-	-	-	-	-	-
English	-	-	-	10	16	26	10	16	26
History	2	2	4	9	7	16	11	9	20
Latin & Greek	-	-	-	1	1	2	1	1	2
Linguistics	-	-	-	-	1	1	-	1	1
Pastoral Ministry	-	-	-	14	19	33	14	19	33
Philosophy	5	1	6	18	4	22	23	5	28
Religion & Education	2	-	2	-	-	-	2	-	2
Romance Languages	-	4	4	1	14	15	1	18	19
Russian	-	-	-	0	1	1	-	1	1
Slavic Studies	-	-	-	-	-	-	-	-	-
Theology	7	3	10	6	3	9	13	6	19
Social Sciences									
Economics	5	2	7	7	8	15	12	10	22
Political Science	2	1	3	3	1	4	5	2	7
Psychology	1	1	2	-	-	-	1	1	2
Sociology	6	3	9	2	1	3	8	4	12
Sciences									
Biology	3	-	3	-	1	1	3	1	4
Chemistry	6	2	8	1	3	4	7	5	12
Geology/Geophysics	-	-	-	1	1	2	1	1	2
Mathematics	-	-	-	1	5	6	1	5	6
Physics	1	-	1	3	-	3	4	-	4
Total-Graduate A&S	40	19	59	77	86	163	117	105	222
Graduate School of Education									
Counseling/Counseling Psychology	3	10	13	10	63	73	13	73	86
Curriculum & Instruction& Sp Ed	2	4	6	15	156	171	17	160	177
Developmental/Educational Psych	2	4	6	-	10	10	2	14	16
Educ. Research/Measurement/Evaluation	-	-	-	1	3	4	1	3	4
Higher Education Administration	1	4	5	12	15	27	13	19	32
Catholic School Leadership	-	-	-	2	1	3	2	1	3
Religious Education	-	-	-	1	10	11	1	10	11
Educational Administration	2	5	7	3	21	24	5	26	31
Professional School Administration Program	2	1	3	-	-	-	2	1	3
Total-Graduate Education	12	28	40	44	279	323	56	307	363
Graduate School of Management									
Business Administration	-	-	-	193	97	290	193	97	290
Finance	2	3	5	71	18	89	73	21	94
Organizational Studies	-	2	2	-	-	-	-	2	2
Total - Graduate Management	2	5	7	264	115	379	266	120	386
Graduate School of Nursing									
Nursing	-	6	6	1	36	37	1	42	43
Graduate School of Social Work									
Social Work	1	7	8	20	132	1752	21	139	160
College of Advancing Studies									
Administrative Studies	-	-	-	20	26	46	20	26	46
Law School									
Law (J.D.)	-	-	-	150	118	268	150	118	268
Total Graduate & Professional Degrees	55	65	120	576	792	1,368	631	857	1,488

* September, December, and May graduations combined.

Source: Student Services

Undergraduate and Graduate Financial Aid, 1997-2002*

Dollars Awarded (Dollars in Thousands)

	1997-98	1998-99	1999-00	2000-01	2001-02
Type of Aid - Undergraduate					
University Scholarships and Grants ¹	\$44,194	\$48,714	\$52,312	\$54,291	\$58,671
State Scholarships ²	1,575	1,643	1,761	2,052	2,136
Pell Grants ³	2,033	2,227	2,251	2,286	2,586
Supplemental Educational Opportunity Grants	1,475	1,555	1,848	1,558	1,622
Work-Study	1,969	1,785	1,664	1,790	1,831
Perkins Loans ⁴	3,311	2,852	3,080	2,556	2,904
Undergraduate Total	\$54,557	\$58,776	\$62,916	\$64,533	\$69,750
Type of Aid - Graduate					
Work-Study	599	682	673	696	765
Perkins Loans ⁴	2,262	1,811	2,332	2,519	3,352
Total Undergraduate and Graduate	\$57,418	\$61,269	\$65,921	\$67,748	\$73,867

Number of Awards

	1997-98	1998-99	1999-00	2000-01	2001-02
Type of Aid - Undergraduate					
University Scholarships and Grants ¹	3,913	3,902	3,922	3,842	3,893
State Scholarships ²	902	894	937	947	1,010
Pell Grants ³	1,143	1,104	1,068	1,014	1,030
Supplemental Educational Opportunity Grants	1,143	1,085	1,121	1,000	1,003
Work-Study	3,135	3,091	3,145	2,894	2,825
Perkins Loans ⁴	1,853	1,701	1,716	1,383	1,551
Undergraduate Total⁵	12,089	11,777	11,909	11,080	12,901
Type of Aid - Graduate					
Work-Study	534	658	830	696	694
Perkins Loans ⁴	692	652	726	757	895
Total Undergraduate and Graduate⁵	13,315	13,087	13,465	12,533	12,901

¹This statistic includes estimated regular university scholarships and grants (through the operating budget), faculty kin tuition remission, athletic grants, Jesuit Reduction, Alumni Association Scholarships, and endowed monies for scholarships.

²State scholarship funds to students from Massachusetts, Vermont, Connecticut, Pennsylvania, Rhode Island, Maine, New Hampshire; Gilbert Grants; and Herter Scholarships.

³Pell Grant eligibility is determined directly by the federal government.

⁴These loan funds (formerly called "National Direct Student Loans") are obtained by federal government contributions, Boston College contributions, and collections of previous loans awarded.

⁵This is a duplicated total since some students receive more than one type of aid.

***Important Note:** The above data do not include Boston College student assistance for graduate and professional students (approximately \$17.84 million in tuition remission, grants, or scholarships and \$13.35 million in stipends during 2001-2002) administered by the various schools and departments. Also excluded are the Nursing Loan Program (\$164,100 during 2001-2002), a variety of grants and scholarships from fraternal organizations and clubs (\$4,992,877 during 2001-2002), and loans processed by Student Financial Services (\$77,030,407 during 2001-2002) for undergraduate students, graduate students, or their parents.

Resident and Non-Resident Enrollment*

Year	1992-93	1993-94	1994-95	1995-96	1996-97	1997-98	1998-99	1999-00	2000-01	2001-02
Resident	6,090	6,622	6,550	6,495	6,670	6,592	6,560	6,859	6,685	6,973
Non-Resident	2,577	2,185	2,529	2,401	2,288	2,329	2,365	2,147	2,015	1,803
Total	8,667	8,807	9,079	8,896	8,958	8,921	8,925	9,006	8,700	8,776

* The above statistics refer to undergraduate day students only. There are no resident graduate students. Beginning in 1998-99 totals exclude students studying abroad in Boston College International Exchange programs.

Source: Offices of Residential Life and Student Services

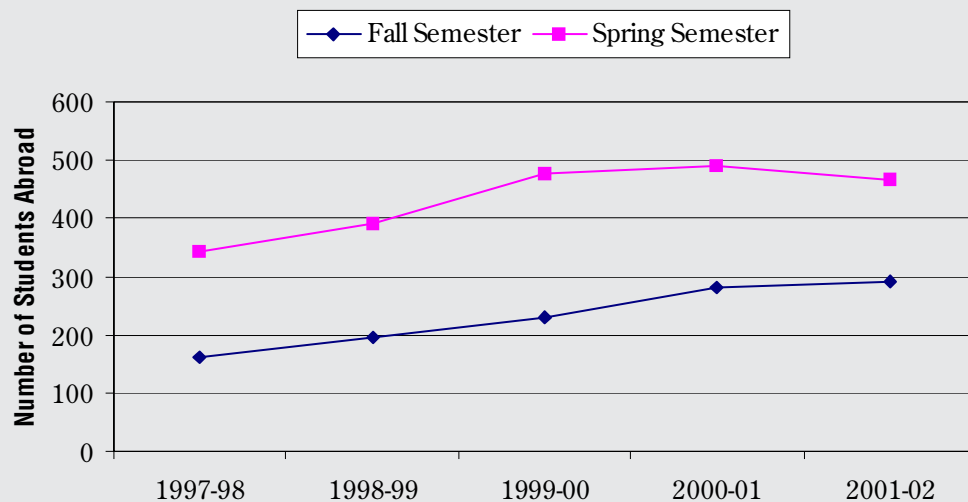
Undergraduates Studying Abroad

	Fall Semester			Spring Semester			Annual Average		
	University Programs	External Programs	Total All Programs	University Programs	External Programs	Total All Programs	University Programs	External Programs	Total All Programs
1997-1998	117	45	162	185	158	343	151	102	253
1998-1999	156	41	197	276	115	391	216	78	294
1999-2000	196	35	231	348	127	475	272	81	353
2000-2001	230	50	280	347	144	491	289	97	386
2001-2002	224	66	290	302	166	468	263	116	379

Source: Offices of Student Services

Undergraduates Studying Abroad 1997-98 through 2001-02

In the last five years, the number of undergraduates studying abroad during the Fall Semester increased by 79%; the number studying abroad in the Spring increased by 36%.



Undergraduate Student Graduation and Retention Rates

Freshman Matriculants in Fall 1995

Rating at Time of Admission	Number of Fall Matriculants	Transfers Out in Good Standing		Number of Graduates within Twelve Semesters		Retention Rate*
		Number	Percent	Number	Percent	
Top 5%	154	6	4%	139	90%	94%
Next 20%	739	45	6%	648	88%	94%
Remaining 75%	1,232	43	3%	1,059	86%	89%
Total	2,125	94	4%	1,846	87%	91%

* "Retention Rate" is the "graduation rate" plus the "transfer out rate" of students to another college.

Source: Office of Enrollment Management Research

Academic Fields of Highest Planned Degree Class of 2001

Academic Field	Rank	Percent
Business	1	32.0%
Law	2	15.4%
Education	3	8.2%
Humanities	4	7.9%
Medicine	5	4.8%
Psychology	6	4.2%
Communications, Media	7	3.9%
Health-related field	8	3.7%
Social Science		3.0%
Fine/Performing Arts	9	2.9%
Political Science/Government	10	2.9%
Biological/Life Sciences	11	2.6%
Social Work	12	2.6%
Computer Science	13	2.3%
Physical Science	14	1.4%
Mathematics	15	0.7%
Theology	16	0.6%
Other field not listed		0.9%
		100.0%

Source: Office of Enrollment Management Research, Spring 2001 *Senior Survey* (2,009 senior respondents).

Long-Term Career Plans Class of 2001

Career Field	Rank	Percent
Law	1	12.7%
All Education	2	12.5%
Business owner, proprietor, entrepreneur	3	10.7%
Finance	4	7.8%
Medical, health care (including physician)	5	7.5%
Advertising, public relations	6	5.9%
Arts/entertainment	7	3.9%
Management	8	2.8%
Social science or services	9	2.8%
Government, politics, public policy	10	2.6%
Broadcasting, media productions	11	2.4%
Computer programming, science or technology	12	2.1%
Foreign service, diplomacy, international relations	13	1.9%
Biology/life sciences	14	1.8%
Accounting	15	1.4%
Publishing, print journalism	16	1.3%
Other		10.5%
Undecided		9.6%
		100.0%

Postgraduate Degree Aspirations Class of 2001

Highest Degree(s) Planned	Attending Fall 2001		Long-Term	
	Number	Percent	Number	Percent
Master's Degree - Arts and Sciences (M.A., M.S.)	103	5.1%	449	22.3%
Master's Degree - Professional (e.g., M.B.A., M.S.W., M.S.E., M.Div., M.Ed.)	65	3.2%	703	35.0%
Doctorate (Ph.D., Ed.D., D.B.A.)	17	0.8%	231	11.5%
Medical Degree (M.D., D.O., D.D.S., D.V.M.)	29	1.4%	74	3.7%
Law Degree (L.L.B. or J.D.)	105	5.2%	275	13.7%
Other Degree or Certificate	38	1.9%	72	3.6%
Total Postgraduate Degree	357	17.8%	1,804	89.8%
Bachelor's Degree	1,652	82.2%	205	10.2%
Total Number of Senior Responses	2,009	100.0%	2,009	100.0%

Source: Office of Enrollment Management Research, Spring 2001 *Senior Survey* (2,009 senior respondents).