

- Be Alert:** Be aware of what is going on around you and report any unusual activity to BC Police.
- Be Informed:** Know what hazards can occur in the area, what you should do if they occur and where to go.
- Attend safety and security information sessions and classes.
- Know how to be notified of an emergency.
- Update your contact information in Agora <http://agora.bc.edu>
- Program a family member or close friend into your cell phone using ICE (In Case of Emergency) in the name field. Emergency responders could use this to contact someone you designate if you are incapacitated.
- Be Prepared:** Develop an emergency communication plan with family and friends.
- Know where to get official information:
- BC Prepared at www.bc.edu/prepare for emergency information.
- Call 888-BOS-COLL (1-888-267-2655) for emergency information.
- Learn CPR and first aid. It might just save a life, including your own.
- Develop an Emergency Supply Kit.

FOR MORE OFFICIAL EMERGENCY PREPAREDNESS AND RESPONSE INFORMATION:

BC Prepared Website: www.bc.edu/prepare

BC Emergency Information Line:
888-BOS-COLL (888-267-2655)

BC Police: 617-552-4444 (emergency)
617-552-4440 (non-emergency)

DHS Website: www.ready.gov

MEMA Website: www.mass.gov/mema

FEMA Website: www.fema.gov

RED CROSS Website: www.redcross.org

OTHER CAMPUS RESOURCES:

Boston College has extensive outreach services which are available to all of our students at anytime:

Campus Ministry: 617-552-3475

Office of Student Affairs: 617-552-3280

Counseling Services: 617-552-3310

Sexual Assault Network: 617-552-2211

Health Services: 617-552-3225

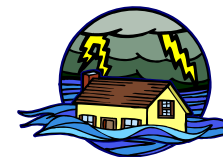
BC Police: 617-552-4440

Work Order Center: 617-552-3048



Boston College
Emergency Management
www.bc.edu/prepare

ARE YOU PREPARED FOR AN EMERGENCY OR DISASTER ON CAMPUS?



Boston College has developed an Emergency Management Plan which is designed to prepare us to respond to and recover from a range of emergency situations. Creating a culture of preparedness is a team effort. It requires staff, faculty and most importantly, students; working together to create a safe and secure community. Implementing the steps outlined in this brochure will help to ensure you and BC are prepared.

KNOW WHAT HAZARDS CAN OCCUR IN OUR AREA:

- FLOOD
- WINTER STORM
- TORNADO/SEVERE THUNDERSTORM
- DROUGHT/HEAT WAVE
- HURRICANE/ COASTAL STORM
- EARTHQUAKE
- HAZARDOUS MATERIALS ACCIDENT
- POWER OUTAGE
- FIRE/EXPLOSION
- VIOLENT ACT (ACTIVE SHOOTER, HOSTAGE, TERRORISM, ETC.)
- PLANNED EVENT
- WATER SUPPLY PROBLEM
- TRANSPORTATION ACCIDENT
- CIVIL DISORDER/RIOT
- BUILDING COLLAPSE
- MEDICAL / BIOLOGICAL EMERGENCY
- CYBER ATTACK

**Be Alert
Be Informed
Be Prepared!**

HOW WOULD I BE NOTIFIED OF AN EMERGENCY?

Boston College uses several different methods of notification to alert students and staff of an emergency. These include:

- Emails to bc.edu accounts
- Text alerts and voice mails to cell-phones (be sure to logon to Agora now and update contact info – (<http://agora.bc.edu>))
- Phone calls to campus phones
- Posting information to the BC Prepared Website (www.bc.edu/prepare)
- Information on the 888-BOS-COLL (888-267-2655) emergency information line
- Other methods (media, handouts, etc.)

BE SURE TO NOTIFY OTHERS IF YOU ARE ALERTED TO AN EMERGENCY!

Important Terms to Know:

Watch: Forecast issued well in advance to alert the public of the possibility of a particular weather related hazard (e.g. tornado watch, flash flood watch). The occurrence, location and timing may still be uncertain.

Warning: Forecast issued when weather or hazard is "imminent" or already occurring (e.g., tornado warning, flood warning). A warning is used for conditions posing threat to life or property.

Evacuate: To immediately leave a hazard location (ie: building, area of campus, etc.) due to an immediate health or life-threatening hazard.

Shelter in Place: To go and stay indoors when a situation occurs that may be a hazard to health or is life-threatening. Stay inside, lock doors/windows, shut off fans and air conditioners. Remain in place until told it is safe to leave.

YOUR PERSONAL EMERGENCY PLAN

- Make sure you have an Evacuation Plan for Home and School which includes:
 - Two ways out of all rooms
 - Pre-designated meeting places for family, friends and/or roommates
 - One location just outside where you live/work
 - A second location further away in case you can't get close to where you work or live
 - Everyone should know where it is
 - Emergency Shelter Locations – check the www.bc.edu/prepare website for details or ask a BC Official (BC Police/RA)
- Make sure you have an Emergency Communication Plan with family and friends:
 - Designate a single family contact outside your area – be sure family, friends and/or roommates know who this contact is and how to reach them
 - Notify family or friends if you are affected by an emergency so they know where you are – if you can't reach them, notify your family contact person
 - Do not call 911 or BC Police unless you need immediate assistance (Police, Fire, Ambulance) – check www.bc.edu/prepare or call 888-BOS-COLL for official information
- If you have pets, develop a Pet Emergency Plan to include emergency supplies and emergency shelter – pets are not allowed in public emergency shelters for health reasons

EMERGENCY SUPPLY KIT

(more information on emergency kits is available at www.bc.edu/prepare)

- Bottled Water
 - Canned or packaged food
 - Manual can opener
 - Battery-powered radio
 - Flashlight
 - Emergency light sticks
 - Extra batteries for radio & light
 - First aid kit
 - Toiletries
 - Toothbrush & toothpaste
 - Shampoo
 - Soap
 - Comb/Brush
 - Blanket (emergency type)
 - Prescription medications (if taken)
 - Eyeglasses / Contacts (if needed)
 - Safety Whistle (to attract attention)
 - Dust Mask & Surgical Gloves
 - Hand Sanitizer
- Don't forget your:**
- Keys
 - Identification (BC ID, Drivers License, etc.)
 - Wallet / Purse
 - Money / Credit Cards
 - Cell-phone and charger