

RESEARCH AND SPONSORED PROJECTS

Highlights of Sponsored Activities

2005-2006

A total of 349 proposals were submitted in FY2006. The amount of funding requested for the total project period for these proposals was \$160,478,836. In FY2006, Boston College received \$44.4 million in awards for research and sponsored programs activity, based upon receipt of 358 funding actions. FY2006 totals represent the best year in University history. Overall, Boston College faculty members continue to be successful in securing external funds. In addition, there is a greater number of faculty working with the Office for Sponsored Programs to secure external funding from both Federal and non-Federal sponsors.

Source: Office for Sponsored Programs

SUMMARY OF SPONSORED PROJECT AWARDS

2005-2006

Department	No. of Awards	Amount	Department	No. of Awards	Amount
Biology	20	\$2,287,384	Intersections Project	1	\$500,000
Center for Human Rights & Int'l Justice	1	30,004	Irish Institute	1	749,850
Center on Aging and Work ¹	1	1,120,296	Law School	12	377,767
Center on Wealth and Philanthropy ²	6	173,000	Learning to Learn	2	490,823
Chemistry	48	5,139,350	Management ⁴	18	4,094,007
Computer Science	1	113,600	Mathematics	7	179,264
Economics	1	309,000	McMullen Museum	1	45,000
Education ³	59	8,308,965	Physics	25	2,062,125
Finance	1	30,000	Political Science	3	159,259
Fine Arts	3	45,000	Provost and Dean of Faculties ⁵	1	1,264,204
Geology	6	153,786	Psychology	8	1,319,934
Graduate School of Arts and Sciences	1	30,000	Romance Languages & Literature	1	6,041
Graduate School of Social Work	23	3,134,743	School of Nursing ⁶	11	857,714
Information Systems	1	10,000	Sociology	3	177,677
Inst. Religious Ed. & Pastoral Min. (IREPM)	3	186,665	Theology	1	10,000
Institute for Scientific Research	59	7,054,664	Weston Observatory	14	332,917
Instructional Design & eTeaching Svcs.	1	130,000			
International Study Center	14	3,473,868	Total	358	\$44,356,907

¹ Credit for this award is jointly shared by the Graduate School of Arts & Sciences (M. Smyer) and the Graduate School of Social Work (M. Pitt-Catsouphes).

² Formerly the Social Welfare Research Institute (SWRI).

³ Includes the Campus School, CSTEPP, Center for Child, Family and Community Partnerships

⁴ Includes Center for Retirement Research, the Center for Work and Family, the Center for Corporate Citizenship.

⁵ Formerly AVP Dean of Faculties ⁶ Includes Psychiatric Mental Health.

Source: Office for Sponsored Programs

SPONSORED PROJECTS

Source and Application of Funding (Dollars in Thousands)

	1996-1997	1997-1998	1998-1999	1999-2000	2000-2001	2001-2002	2002-2003	2003-2004	2004-2005	2005-2006
Revenues										
Sponsored Research	\$ 12,902	\$ 14,608	\$ 18,700	\$ 22,860	\$ 23,796	\$ 26,296	\$ 27,136	\$ 28,989	\$ 28,565	\$ 32,177
Other Sponsored Activity	5,558	4,961	5,112	6,240	8,234	8,675	8,143	7,195	7,243	6,554
Student Aid	5,863	6,544	6,871	7,270	7,430	8,079	8,016	7,803	8,161	7,998
Total	24,323	26,113	30,683	36,370	39,460	43,050	43,295	43,987	43,969	46,729
Source										
Government:										
Federal	18,957	20,182	22,760	25,449	28,677	31,513	31,773	30,528	31,394	32,196
State	1,001	1,415	1,326	1,908	1,858	2,060	1,584	1,674	2,180	1,560
Local	2,009	1,913	2,005	3,118	2,741	2,333	2,412	2,189	2,158	2,372
Non-Government	2,356	2,603	4,592	5,895	6,184	7,144	7,526	9,596	8,237	10,601
Total	\$ 24,323	\$ 26,113	\$ 30,683	\$ 36,370	\$ 39,460	\$ 43,050	\$ 43,295	\$ 43,987	\$ 43,969	\$ 46,729

Source: Office of the Controller

SPONSORED PROJECTS BY DEPARTMENT

Total Accounted Expense (Dollars in Thousands)

	1996-97	1997-98	1998-99	1999-00	2000-01	2001-02	2002-03	2003-04	2004-05	2005-06
Provost/Dean of Faculties	-	-	-	-	-	-	-	\$68	\$739	\$1,005
Athletics	65	65	62	71	-	-	-	-	-	-
BCRAPL ¹	-	-	-	-	125	108	254	138	107	154
Biology	1,330	1,295	1,170	1,477	1,682	2,087	2,631	2,647	2,990	2,009
CCFCP ²	-	-	397	618	339	369	396	454	253	715
Center for Corporate Citizenship	33	45	199	212	88	90	384	403	566	395
Center for Ignatian Spirituality	-	-	-	33	16	1	-	-	-	-
Center for Work and Family	36	269	301	308	693	57	29	32	8	39
Center on Aging and Work	-	-	-	-	-	-	-	-	-	756
Center on Wealth & Philanthropy	178	173	155	171	261	275	284	172	279	245
Chemistry	3,270	3,350	4,642	4,429	4,950	5,553	5,567	5,415	5,103	5,214
Church in the 21st Century	-	-	-	-	-	-	-	-	-	47
College of Arts & Sciences	192	142	52	15	-	-	-	-	108	72
Computer Science	-	-	-	-	-	-	-	-	-	89
Economics	341	336	233	109	115	93	153	225	232	234
Fine Arts	8	24	94	32	83	92	110	131	85	20
Geology and Geophysics ³	497	538	468	384	480	611	469	330	401	503
Graduate School of Social Work	305	402	310	561	553	856	1,398	2,202	2,817	3,201
History	-	92	89	70	54	71	93	89	52	4
Initiatives on Aging	-	-	-	-	-	609	728	729	-	-
Institute for Scientific Research	3,421	3,182	3,417	3,999	4,048	4,771	4,915	5,045	5,061	6,044
International Programs	-	-	-	65	71	26	10	-	-	-
IRE/Pastoral Ministry	-	13	14	1	7	-	-	-	20	121
Irish Institute	-	475	920	741	589	774	671	412	347	551
Law School	276	201	131	342	349	434	287	215	275	397
Learning to Learn	142	152	161	177	184	229	243	294	430	500
Mathematics ⁴	691	404	152	287	257	319	316	304	341	140
McMullen Art Museum	-	-	48	38	6	4	35	6	6	-
O'Neill Library	268	28	3	-	-	-	-	-	-	-
Physics	184	337	636	1,612	1,425	1,704	1,707	2,204	1,752	2,053
Political Science	1	151	116	214	268	270	88	179	83	90
Psychology	216	356	283	350	511	449	637	642	713	745
School of Education	2,969	2,676	3,297	3,902	3,962	3,500	3,499	5,199	5,667	4,783
CSTEPP ⁵	2,613	3,274	4,715	1,112	2,584	3,210	3,654	1,500	1,030	1,391
International Study Center	-	-	-	5,186	5,299	4,154	2,498	2,915	2,870	3,265
School of Management	481	481	688	1,617	2,375	2,563	2,333	2,715	2,223	2,649
School of Nursing	444	521	554	518	396	813	972	705	1,020	1,061
Sociology	95	192	246	214	28	82	131	146	158	166
Student Aid	5,863	6,544	6,871	7,270	7,430	8,051	7,987	7,803	8,161	7,998
Theology	309	370	243	222	123	97	74	73	14	28
University Mission and Ministry	-	-	-	-	78	635	668	552	48	17
Other ⁶	95	25	16	13	31	93	74	43	10	29
Total	\$24,323	\$26,113	\$30,683	\$36,370	\$39,460	\$43,050	\$43,295	\$43,987	\$43,969	\$46,730

¹The Boisi Center for Religion & American Public Life (BCRAPL). ²The Center for Child, Family, and Community Partnerships (CCFCP). ³Includes Weston Observatory. ⁴Includes the Mathematics Institute. ⁵The Center for the Study of Testing, Evaluation, and Educational Policy. ⁶Other includes African and African Diaspora Studies, Burns Library, Classical Studies, English, Human Resources, Jesuit Institute, Music, Philosophy, Romance Languages, Slavic/Eastern Languages, Student Development, University Librarian. Source: Office of the Controller

DOLLAR AMOUNT OF SPONSORED PROJECT AWARDS RECEIVED By Department (Dollars in Thousands)

	1996-97	1997-98	1998-99	1999-00	2000-01	2001-02	2002-03	2003-04	2004-05	2005-06
Alcohol Education Program	-	-	-	-	-	-	-	-	\$5	-
Associate VP for Research	-	-	-	1,717	1,779	3,235	35	1,617	-	-
BCRAPL ¹	-	-	-	297	40	153	358	120	150	-
Biology	1,395	1,109	2,047	1,453	1,947	3,111	2,534	2,564	2,073	2,287
CCCR ²	-	-	570	-	-	839	150	659	-	-
CCFCP ³	159	100	1,542	410	198	641	435	504	622	799
Center for Work & Family	86	452	199	398	72	34	-	-	3	72
Center on Aging & Work ⁴	-	-	-	-	-	-	-	-	-	1,120
Center on Wealth & Philanthropy	233	367	100	270	-	445	99	450	196	173
Chemistry	3,769	4,376	4,027	4,746	6,323	5,783	5,082	6,599	4,053	5,139
Church in the 21 st Century	-	-	-	-	-	-	-	-	52	-
Compliance & Property Mgmt	-	-	-	-	-	-	-	-	26	-
Computer Science	-	-	283	-	63	66	74	-	20	114
Center for Corporate Citizenship	-	-	-	-	-	-	-	-	894	446
Center for Human Rights & Int'l Justice	-	-	-	-	-	-	-	-	-	30
Center for Retirement Research	-	-	-	-	-	-	-	-	2,855	3,011
Economics	372	266	158	147	64	216	-	308	309	309
Finance	-	-	-	-	-	-	-	-	-	30
Fine Arts	20	10	193	40	94	129	237	21	74	45
Geology and Geophysics ⁵	239	467	461	469	573	465	408	445	398	487
Graduate School of Arts & Sciences	48	41	25	25	-	-	-	-	66	30
Graduate School of Social Work ⁶	720	149	199	793	1,045	668	2,390	3,407	3,974	3,135
History	-	161	-	150	56	18	160	-	50	-
Information Systems	-	-	-	-	-	-	-	-	-	10
Institute for Scientific Research	3,510	3,062	3,587	4,489	4,893	4,570	4,561	4,890	6,782	7,055
Instr'l Design & eTeaching Services	-	-	-	-	-	-	-	-	-	130
Intersections Project	-	-	-	-	-	-	-	-	-	500
IREPM ⁷	-	28	-	7	-	-	-	-	117	187
Irish Institute	-	1,100	1,100	220	685	818	500	325	350	750
Law School	77	51	172	303	222	171	150	284	341	378
Learning to Learn	175	-	189	198	201	224	230	455	483	491
Mathematics ⁸	69	174	246	356	275	163	360	374	266	179
McMullen Museum	-	-	-	-	-	-	-	-	-	45
Music	50	-	-	-	-	-	-	-	-	-
Other	69	248	135	-	2,092	99	-	30	-	-
Philosophy	30	-	17	-	-	61	-	-	-	-
Physics	323	366	1,234	1,807	1,393	4,307	2,623	1,826	2,076	2,062
Political Science	107	152	281	144	303	62	116	150	50	159
Provost and Dean of Faculties	-	-	-	-	-	-	-	-	1,000	1,264
Psychology	193	448	441	121	542	342	495	1,195	807	1,320
Romance Languages	-	-	1	-	2	1	-	-	6	6
School of Education	1,281	1,431	2,398	3,691	2,705	2,843	3,074	4,416	1,857	2,833
Campus School	1,874	1,816	2,045	2,174	2,442	2,557	2,852	2,922	2,662	2,765
CSTEEP ⁹	2,920	4,974	6,451	702	2,313	1,478	1,478	1,166	1,593	1,913
International Study Center	-	-	-	5,167	3,635	3,871	2,961	3,675	2,090	3,474
School of Management ¹⁰	492	552	1,874	694	1,038	550	2,581	2,329	464	565
School of Nursing ¹¹	498	513	445	306	768	1,281	794	1,315	1,076	858
Slavic/Eastern Languages	4	33	12	-	-	-	-	-	-	-
Sociology	163	283	238	44	38	115	167	139	156	178
Theology	324	343	226	125	120	70	100	25	25	10
Total	\$19,200	\$23,072	\$30,896	\$31,463	\$35,921	\$39,386	\$35,004	\$42,210	\$38,021	\$44,357

¹ The Boisi Center for Religion & American Public Life (BCRAPL).

² The Center for Corporate Community Relations (CCCR).

³ The Center for Child, Family, and Community Partnerships (CCFCP).

⁴ Credit for this award is jointly shared by the Graduate School of Arts & Sciences and the Graduate School of Social Work.

⁵ Includes Weston Observatory.

⁶ Includes continuing education SW.

⁷ The Institute for Religious Education and Pastoral Ministry (IREPM).

⁸ Includes the Mathematics Institute.

⁹ The Center for the Study of Testing, Evaluation, and Educational Psychology.

¹⁰ Includes Operations & Strategic Management and Organizational Studies.

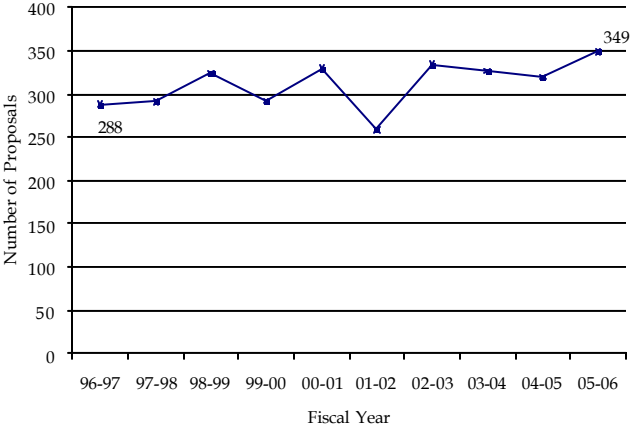
¹¹ Includes Psychiatric Mental Health and Graduate Nursing Programs.

Note: Student aid funds managed by the Financial Aid Office are not included in this table (they are included in other tables in this section provided by the Controller's Office). In some cases dollar amounts in columns may not add to the column total due to rounding.

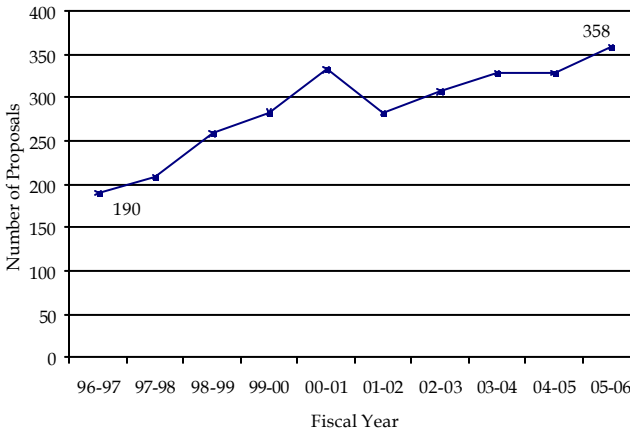
Source: Office for Sponsored Programs

SPONSORED PROJECTS ACTIVITY Fiscal Year 1996-97 through 2005-06

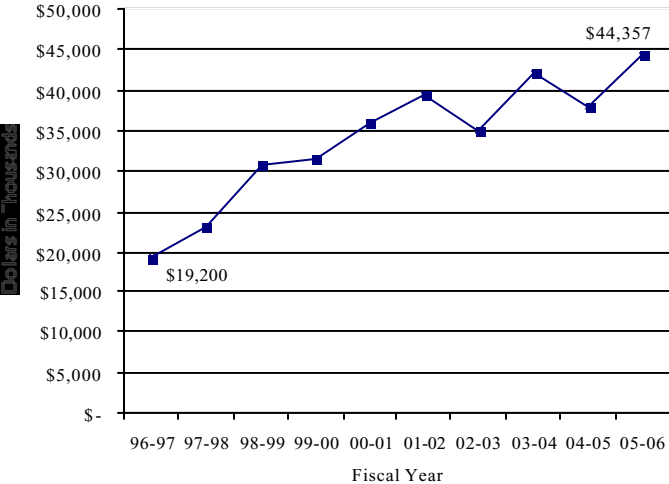
NUMBER OF SPONSORED PROJECT PROPOSALS SUBMITTED, FY97 – FY06



NUMBER OF SPONSORED PROJECT AWARDS RECEIVED, FY97 – FY06



DOLLAR AMOUNT OF SPONSORED PROJECT AWARDS RECEIVED, FY97 – FY06



The number of Sponsored Research Awards received at Boston College nearly doubled between FY97 and FY06. During that same period, the dollar amount of the awards received increased by 131%.

NUMBER OF SPONSORED PROJECT PROPOSALS SUBMITTED By Department, 1996-1997 through 2005-2006

	1996-97	1997-98	1998-99	1999-00	2000-01	2001-02	2002-03	2003-04	2004-05	2005-06
Adult Health Nursing	-	-	-	-	-	-	-	-	1	-
Alcohol Education Program	-	-	-	-	-	-	-	-	1	-
Associate VP for Research	-	-	1	1	7	6	7	6	-	-
Arts & Sciences	-	-	1	1	1	-	1	-	-	2
BC Life-Long Learning Institute	-	-	-	-	-	-	-	-	-	1
BCRAPL ¹	-	-	-	3	2	4	2	3	-	3
Biology	31	31	34	20	20	25	31	48	38	51
CCCR ²	1	3	2	-	4	1	2	4	-	-
CCFCP ³	1	1	13	10	20	17	6	2	4	5
Center for Corporate Citizenship	-	-	-	-	-	-	-	-	3	5
Center for Human Rights & Int'l Justice	-	-	-	-	-	-	-	-	-	1
Center for Ignatian Spirituality	-	-	-	1	-	-	-	-	-	-
Center for Work & Family	5	12	5	2	5	1	-	-	3	-
Center on Aging & Work	-	-	-	-	-	-	-	-	1	1
Center on Wealth & Philanthropy	2	1	1	2	-	1	2	2	3	7
Center for Retirement Research	-	-	-	-	-	-	-	-	4	5
Chemistry	57	48	46	46	41	38	53	43	60	59
Church in the 21 st Century	-	-	-	-	-	-	-	-	-	1
Communications	-	-	-	-	1	1	-	2	2	-
Computer Science	-	6	-	3	4	1	1	4	2	2
Economics	7	5	9	2	1	2	4	3	1	6
English	1	1	-	1	1	-	1	2	-	-
Facilities Management	-	-	-	-	-	-	-	-	-	1
Finance	-	-	-	-	-	-	-	-	1	-
Fine Arts	2	3	2	8	19	4	3	4	2	4
Geology and Geophysics ⁴	12	21	21	19	14	8	8	15	20	33
Graduate School of Arts & Sciences	-	2	1	1	-	1	-	-	2	-
Graduate School of Social Work	12	13	8	11	14	12	17	22	20	14
History	3	3	1	1	1	2	1	2	-	-
Honors Program	-	-	-	-	1	1	-	-	-	-
Information Systems	-	-	-	-	-	-	-	-	-	1
Institute for Scientific Research	12	4	10	6	23	7	16	11	11	13
IREPM	-	-	-	-	-	-	-	-	2	3
Instr'l Design & eTeaching Services	-	-	-	-	-	-	-	-	-	1
Intersections Project	-	-	-	-	-	-	-	-	-	1
Irish Institute	-	1	2	4	2	2	4	4	1	1
Jesuit Institute	1	-	-	-	-	-	-	-	-	-
Law School	3	3	5	5	3	7	10	4	5	10
Learning to Learn	1	1	-	1	1	-	2	1	2	2
Marketing ⁶	-	-	-	-	-	-	-	-	-	1
Mathematics ⁶	2	7	7	1	9	8	2	5	4	8
Mission and Ministry	-	-	-	-	1	-	-	-	-	-
O'Neill Library	-	-	-	-	-	-	-	-	-	1
Other	3	5	4	4	3	1	2	2	-	-
Philosophy	1	-	1	-	1	-	-	-	1	1
Physics	22	12	26	28	28	26	28	28	25	20
Political Science	3	7	8	4	7	4	2	3	2	5
President's Office	-	-	-	-	-	-	-	-	-	1
Provost and Dean of Faculties	-	-	-	-	-	-	-	-	-	1
Psychology	8	13	10	16	18	9	14	23	20	16
Romance Languages	-	-	1	1	1	1	-	-	3	2
School of Education	43	36	42	27	27	21	36	28	30	21
Campus School	4	5	5	5	5	6	9	7	7	6
CSTECP ⁷	13	23	21	25	14	11	12	15	10	4
International Study Center	-	-	-	-	6	8	2	2	1	2
School of Management	9	3	6	4	4	4	22	12	9	7
School of Nursing	16	12	18	16	18	11	22	15	15	18
Slavic/Eastern Languages	3	2	5	5	1	-	-	-	-	-
Sociology	8	6	7	6	-	6	9	4	3	2
Theology	2	1	2	2	2	2	4	1	1	-
Total	288	291	325	292	330	259	335	327	320	349

¹ The Boisi Center for Religion & American Public Life (BCRAPL)² The Center for Corporate Community Relations (CCCR)³ The Center for Child, Family and Community Partnerships (CCFCP)⁴ Includes Weston Observatory⁵ The Institute for Religious Education and Pastoral Ministry (IREPM)⁶ Includes the Mathematics Institute⁷ The Center for the Study of Testing, Evaluation, and Educational Policy⁸ Includes Operations & Strategic Management and Organizational Studies

Source: Office for Sponsored Programs

NUMBER OF SPONSORED PROJECT AWARDS RECEIVED By Department, 1996-1997 through 2005-2006

	1996-97	1997-98	1998-99	1999-00	2000-01	2001-02	2002-03	2003-04	2004-05	2005-06
Alcohol Education Program	-	-	-	-	-	-	-	-	1	-
Associate VP for Research	-	-	-	2	1	2	1	3	-	-
BCRAPL ¹	-	-	-	2	1	3	6	1	1	-
Biology	16	12	17	16	17	24	20	22	15	20
CCCR ²	-	-	3	-	-	3	1	5	-	-
CCFCP ³	1	1	7	1	16	12	7	4	5	9
Center for Corporate Citizenship	-	-	-	-	-	-	-	-	3	3
Center for Work & Family	2	13	6	4	4	1	-	-	1	2
Center on Aging & Work ⁴	-	-	-	-	-	-	-	-	-	1
Center on Wealth & Philanthropy	2	2	1	2	-	1	3	2	9	6
Center for Retirement Research	-	-	-	-	-	-	-	-	4	5
Center for Human Rights & Int'l Justice	-	-	-	-	-	-	-	-	-	1
Chemistry	38	46	40	52	45.5	40	43	51	40	48
Church in the 21 st Century	-	-	-	-	-	-	-	-	1	-
Compliance & Property Mgmt	-	-	-	-	-	-	-	-	1	-
Computer Science	-	-	2	-	1	1	1	-	2	1
Economics	5	2	4	3	1	4	-	1	1	1
Finance	-	-	-	-	-	-	-	-	-	1
Fine Arts	1	1	4	3	6	5	8	2	4	3
Geology and Geophysics ⁵	4	8	10	9	6.5	9	5	6	13	20
Graduate School of Arts & Sciences	1	1	1	1	-	-	-	-	2	1
Graduate School of Social Work ⁶	11	8	7.5	16	12	13	29	22	25	23
History	-	3	-	1	3	1	2	-	3	-
Information Systems	-	-	-	-	-	-	-	-	-	1
Institute for Scientific Research	13	17	15	15	42	34	47	42	62	59
Instr'l Design & eTeaching Services	-	-	-	-	-	-	-	-	-	1
Intersections Project	-	-	-	-	-	-	-	-	-	1
IREPM ⁷	-	1	-	1	-	-	-	-	2	3
Irish Institute	-	2	2	2	3	3	2	4	1	1
Law School	2	3	3	5	3.5	7	5	8	9	12
Learning to Learn	1	-	1	2	21	2	1	3	3	2
Mathematics ⁸	2	3	5	4	5	4	7	9	9	7
McMullen Museum	-	-	-	-	-	-	-	-	-	1
Music	1	-	-	-	-	-	-	-	-	-
Other	2	3	2	-	2.5	1	-	1	-	-
Philosophy	1	-	1	-	-	1	-	-	-	-
Physics	10	11	18	25	21	15	17	20	27	25
Political Science	3	6	10	4	6	5	3	3	1	3
Provost and Dean of Faculties	-	-	-	-	-	-	-	-	1	1
Psychology	5	5	8	5	9	3	11	16	10	8
Romance Languages	-	-	1	-	1	1	-	-	1	1
School of Education	27	26	29.5	38	33	23	26	43	27	23
Campus School	5	6	5	9	6	8	6	8	7	10
CSTEPP ⁹	11	1	28	12	12	12	12	8	9	17
International Study Center ¹⁰	-	-	-	24	20	16	13	14	9	14
School of Management ¹¹	5	4	6	9	17	7	13	13	5	8
School of Nursing ¹¹	11	12	12	10	13	16	14	13	10	11
Slavic/Eastern Languages	1	2	1	-	-	-	-	-	-	-
Sociology	5	6	4	3	1	4	3	3	3	3
Theology	4	4	4	3	2	1	1	1	1	1
Total	190	209	258	283	332	282	307	328	328	358

¹ The Boisi Center for Religion & American Public Life (BCRAPL)

² The Center for Corporate Community Relations (CCCR)

³ The Center for Child, Family, and Community Partnerships (CCFCP)

⁴ Credit for this award is jointly shared by the Graduate School of Arts & Sciences and the Graduate School of Social Work

⁵ Includes Weston Observatory

⁶ Includes continuing education SW

⁷ The Institute for Religious and Pastoral Ministry (IREPM)

⁸ Includes the Mathematics Institute

⁹ The Center for the Study of Testing, Evaluation, and Educational Policy

¹⁰ Includes Operations & Strategic Management and Organizational Studies

¹¹ Includes Psychiatric Mental Health and Graduate Nursing Program

Note: Student aid funds managed by the Financial Aid Office are not included in this table (they are included in other tables in this section provided by the Controller's Office). In some cases dollar amounts in columns may not add to the column total due to rounding.

Source: Office for Sponsored Programs

SELECTED SPONSORED PROJECT AWARDS 2005-2006

Title	Source of Funding	Amount
Biology		
A General Bayesian Polymorphism Discovery Tool	NIH/National Human Genome Research Institute	\$369,355
Center for Corporate Citizenship		
Corporate Reporting of Social, Environmental, and Governance Information: What Investors Want	NASD Investor Education Foundation	\$295,641
Center on Aging and Work		
Sloan Center on Flexible Work Options and Older Workers: Adoption, Implementation, and Utilization	Alfred P. Sloan Foundation	\$1,120,296
Chemistry		
Development of a Femtosecond Circular Dichroism Spectrometer for Research and Education	National Science Foundation	\$439,253
DNA Lattices: Nanostructures of the Study of Biological Processes	NIH/National Institute of General Medicine Science	\$269,832
Nanoscale Electrocatalytic Protein Detection	NIH/National Cancer Institute	\$154,500
Education		
Urban Ecology Information Technology and Inquiry Science for Students and Teachers	National Science Foundation	\$1,349,637
Irish Institute Boston		
FY2006 Exchange Programs for Northern Ireland and Ireland	U.S. Department of State	\$749,850
Institute for Scientific Research		
Innovative Techniques to Model, Analyze and Monitor Space Effects on Air Force Space-Based Systems	U.S. Air Force	\$392,300
Intersections Project		
Sustaining the Theological Exploration of Vocation 2005	Lilly Endowment, Inc.	\$500,000
Learning to Learn		
Student Services Program	U.S. Department of Education	\$270,823
Psychology		
Do Experiments Predict Practice? Evaluating the Influence of Patience on Human Behavior	National Science Foundation	\$249,077
School of Nursing		
CARE Intervention of Depressed Mothers and their Infants	NIH/National Institute of Nursing Research	\$347,625

Source: Office for Sponsored Programs

UNIVERSITY RESEARCH INSTITUTES AND CENTERS

Name of Center or Institute	Established	Contact Information
Boisi Center for Religion and American Public Life	1999	Alan Wolfe, Director
Boston College Business Institute	1972	Jeffrey L. Ringuet, Associate Dean
Center for Asset Management	2005	Hassan Tehranian, Director
Center for Catholic Education	2006	Michael James, Executive Director
Center for Child, Family, & Community Partnerships	1997	Mary Walsh, Director
Center for Christian-Jewish Learning	2000	Philip A. Cunningham, Executive Director
Center for Corporate Citizenship	1985	Bradley Googins, Executive Director
Center for East Europe, Russia & Asia	1984	Cynthia Simmons & Dr. Roberta Manning, Co-Directors
Center for Human Rights and International Justice	2004	David Hollenbach, S.J., Director
Center for Ignatian Spirituality	1997	Father Julio Giulietti, S.J., Director
Center for International Higher Education	1996	Phillip Altbach, Director
Center for International Partnerships & Programs	1991	Ourida Mostefae, Interim Director
Center for Investment Research and Management	2002	Richard V. Howe, Executive Director
Center for Irish Programs	2000	Thomas Hachey, Executive Director
Center for Irish Programs, Irish Institute	1997	Mary O'Herlihy, Director
Center for Irish Programs, Irish Studies	1978	Marjorie E. Howes & Robert J. Savage Jr., Co-Directors
Center for Nursing Research	1992	Mary E. Duffy, Director
Center for Retirement Research	1998	Alicia Munnell, Director
Center for the Study of Home & Community Life	2004	Kevin Mahoney, Director
Center for the Study of Testing, Evaluation & Educational Policy	1980	Joseph Pedulla, Director
Center for Work & Family	1990	J. Bradley Harrington, Executive Director
Center on Aging & Work	2005	Michael Smyer & Martha Pitt-Catsoupes, Co-Directors
Center on Wealth and Philanthropy	1970	Paul Schervish, Director
Church in the 21st Century Center	2002	Timothy Muldoon, Director
EagleEyes Project	1996	Phillip DiMattia, Director
Institute for Administrators in Catholic Higher Education	2001	Tracy Schier, Director
Institute for Scientific Research	1954	Patricia Doherty & Brian Sullivan, Co-Directors
Institute for the Study & Promotion of Race & Culture	2000	Janet E. Helms, Director
Institute of Medieval Philosophy & Theology	1992	Stephen F. Brown, Director
Institute of Religious Education & Pastoral Ministry	1971	Thomas Groome, Director
Jesuit Institute	1988	T. Frank Kennedy, S.J., Director
Lifelong Learning Institute	1992	Carol Naber, Program Manager
Lonergan Institute	1986	Kerry Cronin, Director
Mathematics Institute	1957	Stanley J. Bezuska, S.J., Director
Presidential Scholars Program	1991	Dennis Sardella, Director
Sloan Work & Family Research Network	1997	Judi Casey, Program Director
Small Business Development Center	1980	Joseph Andrews, Executive Director
TIMSS & PIRLS International Study Center	1995	Ina Mullis & Michael Martin, Co-Directors
Urban Ecology Institute	1998	Charles Lord, Executive Director
Weston Observatory	1928	John Ebel, Director
Winston Center for Leadership & Ethics	2006	Richard Keeley, Associate Dean & Director of Programs
Women's Resource Center	1973	Sheila McMahon, Director

