

BOARD OF TRUSTEE MEMBERSHIP 2006-2007

Gregory P. Barber, '69

Former Chairman
Gregory P. Barber & Associates, Inc.

Peter W. Bell, '86

Venture Partner
Highland Capital Partners

Patrick Carney, '70

Chairman and Chief Executive Officer
Claremont Companies

Charles I. Clough, Jr., '64

Chairman and Chief Executive Officer
Clough Capital Partners

Kathleen A. Corbet, '82

President
Standard and Poor's

***Robert F. Cotter, '73**

Former President and Chief Operating Officer
Starwood Hotels and Resorts Worldwide, Inc.

Robert M. Devlin

Chairman
Curragh Capital Partners

Francis A. Doyle, '70, M.B.A. '75

President and Chief Executive Officer
Connell Limited Partnership

Cynthia Lee Egan, '78

Executive Vice President
FRM Corp.

John F. Fish

President and Chief Executive Officer
Suffolk Construction Company

Keith A. Francis, '76

Senior Intelligence Analyst
Department of Justice

Mario J. Gabelli

Chairman and Chief Investment Officer
GAMCO Investors, Inc.

***William J. Geary, '80**

Partner
North Bridge Venture Partners

Susan McManama Gianinno, '70

Chairman and CEO
Publicis USA

Mary J. Steele Guilfoile, '76

Chairman
MG Advisors, Inc.

Kathleen Powers Haley, '76

Manager
Snows Hill Management

***Paul F. Harman, S.J., '61, M.A. '62**

Rector of the Jesuit Community
Boston College

Daniel J. Harrington, S.J., '64, M.A. '65

Professor of New Testament
Weston Jesuit School of Theology

Robert K. Kraft

Chairman and Chief Executive Officer
The Kraft Group

John L. LaMattina, '71

President, Global Research & Development
Pfizer Incorporated

Robert B. Lawton, S.J.

President
Loyola Marymount University

***William P. Leahy, S.J.**

President
Boston College

Peter S. Lynch, '65, LL.D. '95 (Hon.)

Vice Chairman
Fidelity Management and Research Company

Peter K. Markell, '77

Vice President of Finance
Partners HealthCare System, Inc.

Kathleen M. McGillicuddy, '71 (Newton College)

Former Executive Vice President
FleetBoston Financial

***Robert J. Morrissey, Esq., '60**

Partner
Morrissey, Hawkins & Lynch

***R. Michael Murray, Jr., '61, M.A. '65**

Member, McKinsey Advisory Committee
McKinsey & Company, Inc.

Thomas P. O'Neill III, '68

Chief Executive Officer
O'Neill and Associates

Brian G. Paulson, S.J.

President
St. Ignatius College Prep

Scott R. Pilarz, S.J.

President
University of Scranton

Sally Engelhard Pingree

Director and Vice Chairman
Engelhard Hanovia, Inc.

Paula D. Polito, '81

Senior Vice President
Global Private Client
Merrill Lynch

R. Robert Popeo, Esq., J.D. '61

Chairman and President
Mintz, Levin, Cohn, Ferris, Glovsky & Popeo, P.C.

Richard F. Powers III, '67

Advisory Director (Ret.)
Morgan Stanley

Pierre-Richard Prosper, '85

Former U.S. Ambassador-at-Large for War Crimes
U.S. Department of State

Thomas F. Ryan, Jr., '63

Retired, Private Investor

***Rev. Nicholas A. Sannella, '67**

Pastor
Immaculate Conception Parish

Bradley M. Schaeffer, S.J., M.Ed. '73

Rector of the Weston Jesuit School of Theology

Susan Martinelli Shea, '76

Special Education Teacher
Tredyffrin/Easttown Middle School

***Marianne D. Short, Esq., '73**

(Newton College), J.D. '76
Managing Partner
Dorsey & Whitney LLP

***Patrick T. Stokes, '64**

President and Chief Executive Officer
Anheuser-Busch Companies, Inc.

Richard F. Syron, '66, L.D. '89 (Hon.)

Chairman and Chief Executive Officer
Freddie Mac

***Benaree P. Wiley**

President and Chief Executive Officer (Emeritus)
The Partnership, Inc.

Blenda J. Wilson

President and Chief Executive Officer
Nellie Mae Education Foundation

Robert L. Winston, '60

Senior Vice President (Ret.)
American Funds Distributor

Note: Only Boston College degrees listed
* Executive Committee Member
Source: President's Office

TRUSTEE ASSOCIATE MEMBERSHIP 2006-2007

Mary Jane Vouté Arrigoni
Greenwich, CT

Geoffrey T. Boisi, '69
Chairman and Senior Partner
Roundtable Investment Partners LLC

Wayne A. Budd, Esq., '63
Senior Counsel
Goodwin Procter LLP

Denis H. Carroll, '64
Chairman and Chief Executive Officer
Holden Industries, Inc.

Darcel D. Clark, '83
Supreme Court Justice
State of New York

James F. Cleary, '50, D.B.A. '93 (Hon.)
Advisory Director
UBS

Christopher S. Collins, S.J.
Weston Jesuit School of Theology

John M. Connors, Jr., '63
Chairman
Hill, Holliday, Connors, Cosmopolos,
Inc.

Joseph E. Corcoran, '59
Chairman
Corcoran Jennison Companies

John F. Cunningham, '64
Chairman and Chief Executive Officer
Cunningham and Company

Brian E. Daley, S.J.
Professor, Department of Theology
University of Notre Dame

Andrew N. Downing, S.J.
Weston Jesuit School of Theology

Emilia M. Fanjul
Boston College Parent

John F. Farrell, Jr.
Chairman
Automatic Service Company

Yen-Tsai Feng
Roy E. Larsen Librarian (Ret.)
Harvard College

Charles D. Ferris, Esq., '54, J.D. '61, LL.D. '78 (Hon.)
Senior Partner
Mintz, Levin, Cohn, Ferris, Glovsky &
Pope, P.C.

Thomas J. Flanagan, '42
Chairman, President and
Chief Executive Officer
The Flanagan Group-Technology
Consulting

Thomas J. Flatley
President
The Flatley Company

Thomas J. Galligan, Jr., '41, D.B.A. '75 (Hon.)
Chairman and Chief Executive Officer
(Ret.)
Boston Edison Company

John L. Harrington, '57, M.B.A. '66
President and Trustee
Yawkey Foundation

John J. Higgins, S.J., '59, M.A. '60, S.T.L. '67
Executive Assistant to the Provincial
New England Province

Richard T. Horan, '53
President
Hughes Oil Company

George W. Hunt, S.J.
Director, Archbishop Hughes Institute
Fordham University

Richard A. Jalkut, '66
President and Chief Executive Officer
TelePacific Communications

Anne P. Jones, Esq., '58, J.D. '61
Consultant

Michael D. Jones, Esq., '72, J.D. '76
Senior Executive Vice President and
Chief Administrative Officer
National Association of Securities
Dealers, Inc.

Edmund F. Kelly
Chairman, President and
Chief Executive Officer
Liberty Mutual Group

Judith B. Krauss, '68
Professor of Nursing & Health Policy
Silliman College
Yale University

**Catherine T. McNamee, C.S.J.,
M.Ed. '55, M.A. '58**

Robert A. Mitchell, S.J.
Superior
America House

John A. McNeice, Jr., '54, D.B.A. '97 (Hon.)
Chairman and Chief Executive Officer
(Ret.)
The Colonial Group, Inc.

Giles E. Mosher, Jr., '55
Vice Chairman (Emeritus)
Bank of America

Robert J. Murray, '62
Chairman and Chief Executive Officer
(Ret.)
New England Business Service, Inc.

Therese E. Myers, '66 (Newton College)
Chief Executive Officer
Bouquet Multimedia, LLC

**Edward M. O'Flaherty, S.J., '59,
Th.M. '66**
Director, Office of Ecumenical and
Interreligious Affairs
Archdiocese of Boston

Thomas D. O'Malley

John J. Powers, '73
Managing Director
Goldman Sachs & Company

Nicholas S. Rashford, S.J.
Professor
St. Joseph's University

Thomas J. Rattigan, '60

Randall P. Seidl, '85
Vice President and General Manager
Sun Microsystems, Inc.

John J. Shea, S.J., M.Ed. '70
Director

Jesuit East Asia Assistancy Theological
Encounter

Sylvia Q. Simmons, M.Ed. '62, Ph.D. '90
President (Ret.)
American Student Assistance
Corporation

Robert L. Sullivan, '50, M.A. '52
International Practice Director (Ret.)
Peat, Marwick, Mitchell & Company

TRUSTEE ASSOCIATE MEMBERSHIP 2006-2007 (Continued)

Salvatore J. Trani
Executive Managing Director
BGC Partners, L.P.

Thomas A. Vanderslice, '53
Private Investor

Jeffrey P. von Arx, S.J.
President
Fairfield University

Vincent A. Wasik
President
MCG Global, LLC

Note: Only Boston College degrees listed
Source: President's Office

BOARD OF TRUSTEE CHAIRMEN

Cornelius W. Owens	1972-1975
Thomas J. Galligan, Jr.	1975-1978
James P. O'Neill	1978-1981
William F. Connell	1981-1984
David S. Nelson	1984-1987
Thomas A. Vanderslice	1987-1990
John M. Connors, Jr.	1990-1993
Geoffrey T. Boisi	1993-1996
Richard F. Syron	1996-1999
Charles I. Clough, Jr.	1999-2002
John M. Connors, Jr.	2002-2005
Patrick T. Stokes	2005-

THE JESUIT COMMUNITY AT BOSTON COLLEGE

With 113 members, the Jesuit Community at Boston College is one of the largest communities in the Society of Jesus. Fifty-four Jesuits serve in the University as members of the administration, faculty, or staff, working either full-time or part-time. A number of Jesuits in the community also offer Ignatian retreats and spiritual direction to faculty, staff, and students. There are 27 Jesuits from more than 20 different countries around the world who are studying for graduate degrees at the University or who are here as visiting scholars.

The main community residence is St. Mary's Hall, but there are also five smaller communities around the perimeter of the campus. Eight Jesuits live in the student residence halls and the four Jesuits who staff St. Ignatius Parish are also part of the Boston College Jesuit Community. For further details, including a list of courses taught by Jesuits at Boston College, see the Jesuit Community Web page at <http://fmwww.bc.edu/SJ/>.

Source: Rector, Jesuit Community

OFFICERS OF THE UNIVERSITY 2006-2007

President

William P. Leahy, S.J.

Chancellor

J. Donald Monan, S.J.

Provost and Dean of Faculties

Cutberto Garza

Executive Vice President

Patrick J. Keating

Vice President for University Mission and Ministry

Joseph A. Appleyard, S.J.

Vice President

Mary Lou DeLong

Vice President for Facilities Management

Thomas Devine

Secretary of the University

Joseph P. Duffy, S.J.

Vice President for University Advancement

James J. Husson

Vice President for Governmental & Community Affairs

Thomas J. Keady

Senior Vice President

James P. McIntyre

Financial Vice President and Treasurer

Peter C. McKenzie

Vice President for Information Technology Services

Marian G. Moore

Vice President and Special Assistant to the President

William B. Neenan, S.J.

Vice President for Student Affairs

Cheryl L. Presley

Vice President for Human Resources

Leo V. Sullivan

Source: Department of Human Resources

ACADEMIC ADMINISTRATION 2006-2007

Office of the Provost and Dean of Faculties

Cutberto Garza, Provost
and Dean of Faculties

Patricia DeLeeuw, Vice Provost for
Faculties

Kevin Bedell, Vice Provost for
Research

J. Joseph Burns, Associate Academic
Vice President for Undergraduate
Programs

Rita R. Owens, Associate Academic
Vice President

Enrollment Management

Robert S. Lay, Dean

The Woods College of Advancing Studies

James A. Woods, S.J., Dean

The College of Arts and Sciences

Joseph F. Quinn, Dean

Mary Daniel O'Keefe, O.P., Associate
Dean

Clare M. Dunsford, Associate Dean

William H. Petri, Associate Dean

Akua Sarr, Associate Dean

Barbara A. Viechnicki, Associate Dean
for Finance and Administration

The Graduate School of Arts & Sciences

Michael A. Smyer, Dean

Candace Hetzner, Associate Dean for
Academic Affairs

Robert V. Howe, Associate Dean for
Admission & Administration

The Lynch School of Education

Joseph M. O'Keefe, S.J., Dean

M. Brinton Lykes, Associate Dean

John E. Cawthorne, Associate Dean of
Undergraduate Student Services

Mary Ellen Fulton, Associate Dean for
Finance, Research and
Administration

Arline Riordan, Associate Dean of
Graduate Student Services

The Law School

John H. Garvey, Dean

Lawrence A. Cunningham, Associate
Dean for Academic Affairs

Filippa M. Anzalone, Associate Dean
for Library and Computing Services

Norah Wylie, Associate Dean for
Students

Henry E. Clay, Associate Dean for
Finance and Administration

Marianne E. Lord, Associate Dean for
Institutional Advancement

The Carroll School of Management

Andrew C. Boynton, Dean

Jeffrey Ringuest, Associate Dean
(Graduate)

Richard E. Keeley, Associate Dean
(Undergraduate)

Eugene F. McMahon, Associate Dean
for Administration

The Connell School of Nursing

Barbara Hazard, Dean

Patricia Tabloski, Associate Dean
(Graduate)

Catherine E. Read, Associate Dean
(Undergraduate)

Catherine M. Toran, Assistant Dean
for Finance & Administration

The Graduate School of Social Work

Alberto Godenzi, Dean

Thomas Walsh, Associate Dean &
MSW Program Director

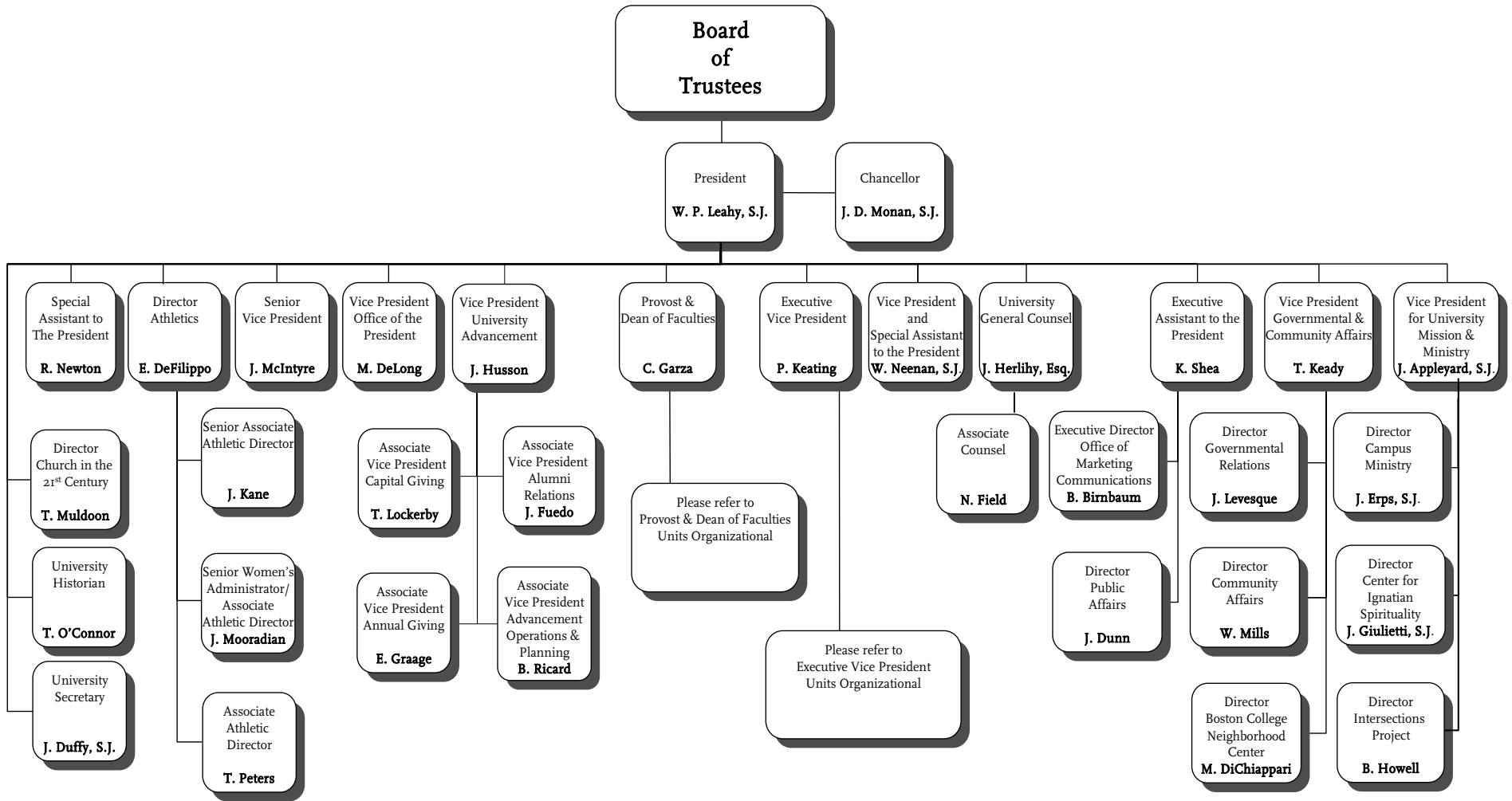
The Summer Session

James A. Woods, S.J., Dean

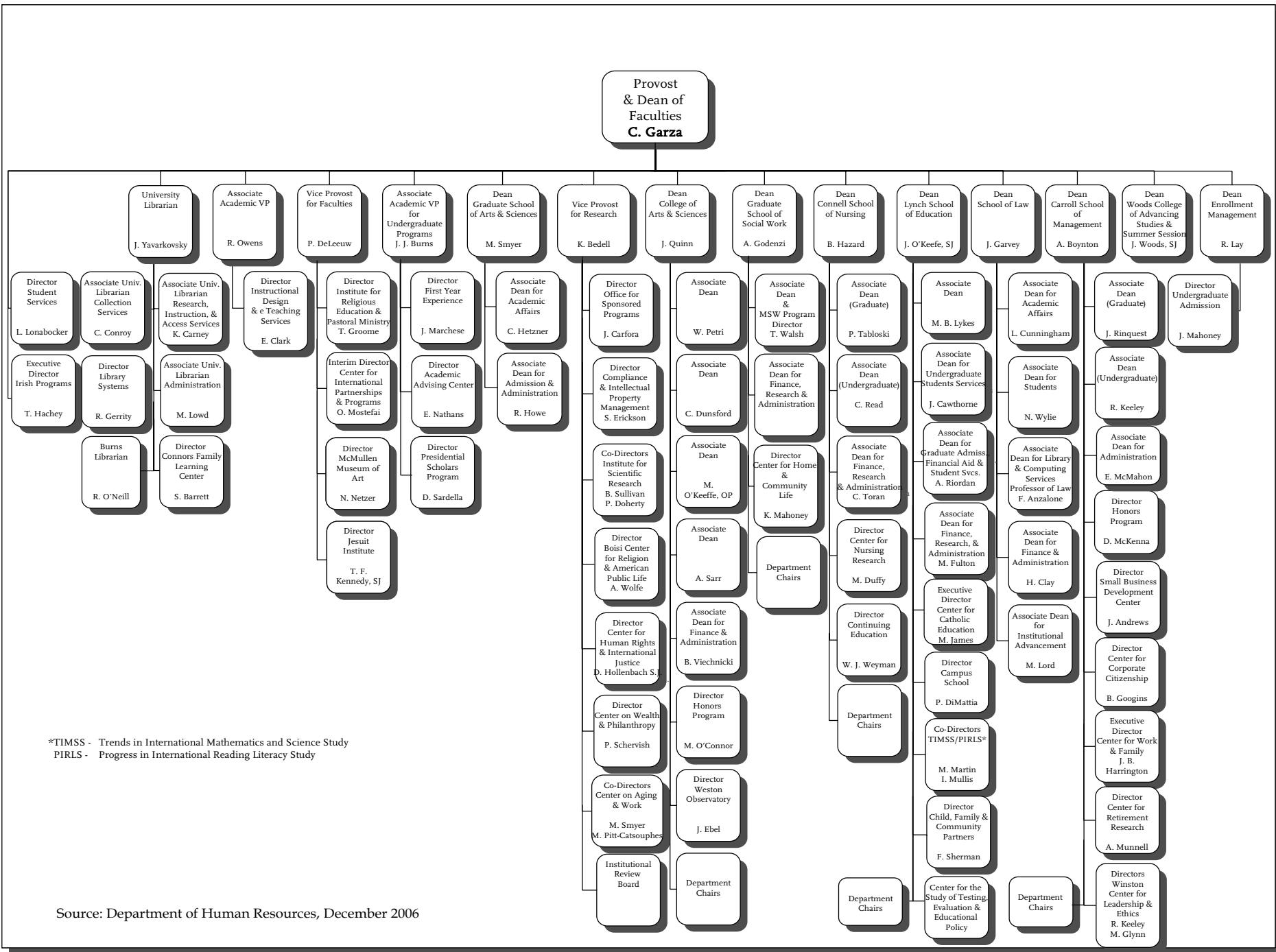
University Libraries

Jerome Yavarkovsky, University
Librarian

Source: Department of Human Resources

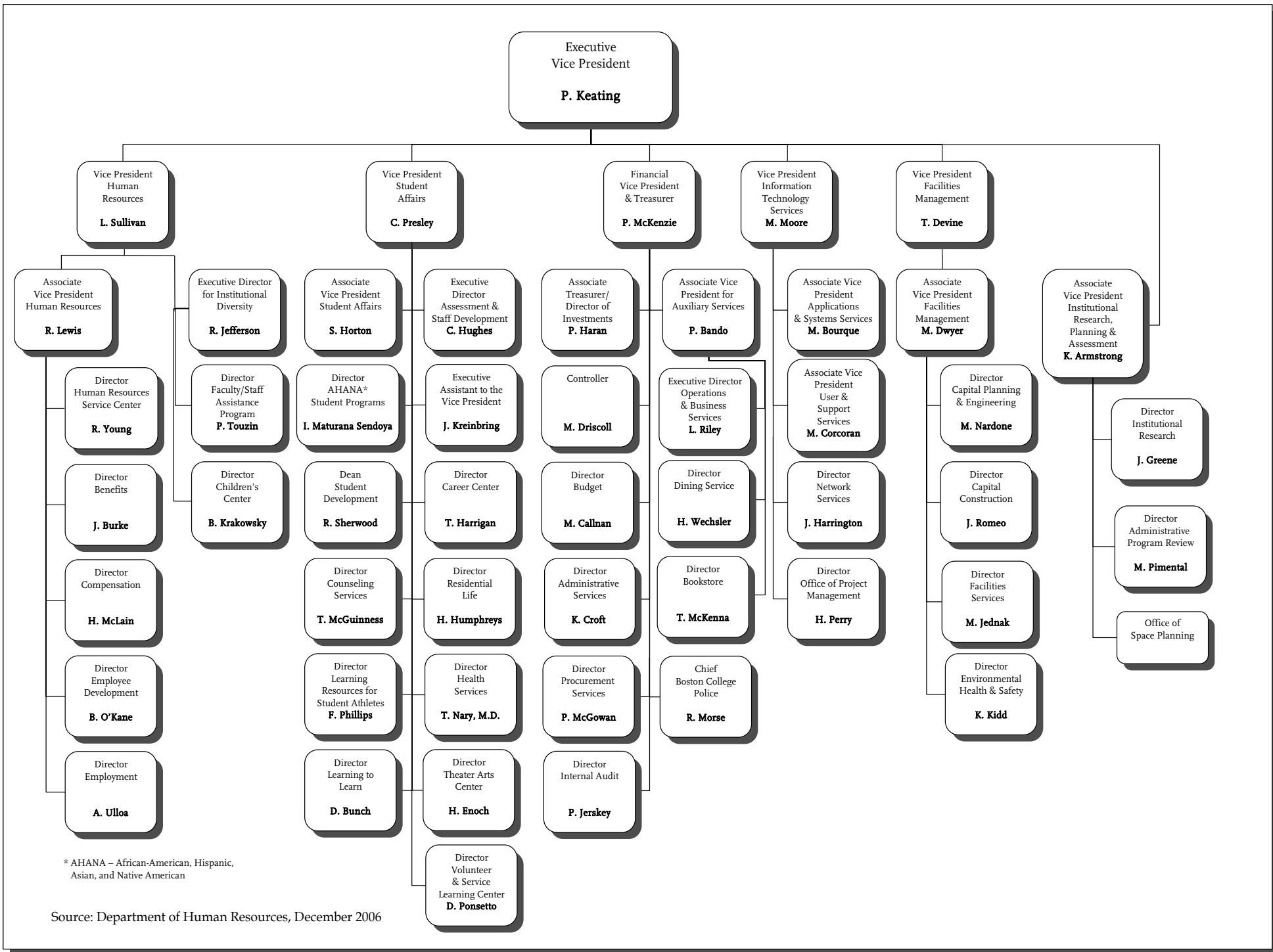


Source: Department of Human Resources, December 2006



*TIMSS - Trends in International Mathematics and Science Study
PIRLS - Progress in International Reading Literacy Study

Source: Department of Human Resources, December 2006



* AHANA – African-American, Hispanic, Asian, and Native American

Source: Department of Human Resources, December 2006

UNIVERSITY ADMINISTRATORS 2006-2007

Undergraduate Admission

John L. Mahoney, Jr., Director

Center on Aging & Work

Michael A. Smyer, Co-Director
Martha Pitt-Catsouphe, Co-Director

AHANA Student Programs

Ines M. Maturana Sendoya, Director

Alumni Association

John Feudo, Associate Vice President,
Alumni Relations

Athletics

Eugene B. DeFilippo, Jr., Director

Internal Audit

Pamela A. Jerskey, Director

Auxiliary Services

Patricia Bando, Associate Vice President

Boisi Center for Religion and American Public Life

Alan Wolfe, Director

Bookstore

Thomas McKenna, Director

Budget

Michael T. Callnan, Director

Campus Ministry

James D. Erps, S.J., Director

Campus School

Philip A. DiMattia, Director

Capital Construction

John S. Romeo, Director

Capital Planning & Engineering

Mary S. Nardone, Director

Career Center

Theresa A. Harrigan, Director

Church in the 21st Century

Timothy P. Muldoon, Director

Community Affairs

William R. Mills, Director

Compliance and Intellectual Property Management

Stephen Erickson, Director

Connors Family Learning Center

Suzanne M. Barrett, Director

Continuing Education, Connell School of Nursing

W. Jean Weyman, Director

Controller

Michael J. Driscoll

Center for Corporate Citizenship

Bradley K. Googins, Director

University Counseling Services

Thomas P. McGuinness, Director

Development - Annual Giving

Eric C. Graage, Associate Vice President

Development - Capital Giving

Thomas P. Lockerby, Associate Vice President

Development-Advancement

Operations & Planning

Brenda S. Ricard, Associate Vice President

Dining Service

Helen S. Wechsler, Director

Environmental Health and Safety

Keith D. Kidd, Director

Financial Vice President & Treasurer

Kathy Croft, Director, Administrative Services

First Year Experience

Joseph P. Marchese, Director

University General Counsel

Joseph Herlihy, Esq.
Nora E. Field, Associate Counsel, Esq.

Health Services

Thomas I. Nary, M.D., Director

University Historian

Thomas H. O'Connor

Honors Program, College of Arts & Sciences

Mark F. O'Connor, Director

Honors Program, Carroll School of Management

David R. McKenna, Director

Human Resources

Robert J. Lewis, Associate Vice President

Human Resources - Benefits

John R. Burke, Director

Human Resources - Children's Center

Barbara A. Krakowsky, Director

Human Resources - Compensation

Halley McLain, Director

Human Resources - Employee Development

Bernard R. O'Kane, Director

Human Resources - Office for Institutional Diversity

Richard P. Jefferson, Executive Director

Human Resources - Employment

Anita E. Ulloa, Director

Human Resources - Faculty/Staff Assistance Program

Patricia A. Touzin, Director

Human Resources Service Center

Richard M. Young, Director

Center for Human Rights & International Justice

David Hollenbach, S.J., Director

Center for Ignatian Spirituality

Julio Giulietti, S.J., Director

Information Technology - Applications & Systems Services

Michael Bourque, Associate Vice President

Information Technology - User & Support Services

Mary C. Corcoran, Associate Vice President

Information Technology - Network Services

Joseph E. Harrington, Director

Information Technology - Project Management

Henry A. Perry, Director

Institutional Research, Planning & Assessment

Kelli Armstrong, Associate Vice President
Jessica Greene, Director, Institutional Research

Intersections Project

Burton Howell, Director

Irish Programs

Thomas E. Hachey, Executive Director

Jesuit Institute

T. Frank Kennedy, S.J., Director

Learning to Learn

Dan Bunch, Director

Learning Resources for Student Athletes

Ferna L. Phillips, Director

Office of Marketing Communications

Ben Birnbaum, Executive Director and Special Assistant to the President

McMullen Museum of Art

Nancy D. Netzer, Director

Boston College Neighborhood Center

Maria S. DiChiappari, Director

Center for Nursing Research

Mary E. Duffy, Director

Boston College Police

Robert A. Morse, Chief

UNIVERSITY ADMINISTRATORS 2006-2007 (Continued)

Presidential Scholars Program

Dennis J. Sardella, Director

Public Affairs

John B. Dunn, Director

Procurement Services

Richard J. Geppner, Director

Institute for Religious Education and Pastoral Ministry

Thomas Groome, Director

Residential Life

Henry J. Humphreys, Director

Center for Retirement Research

Alicia H. Munnell, Director

Institute for Scientific Research

Brian F. Sullivan, Co-Director

Patricia H. Doherty, Co-Director

Small Business Development Center

Joseph P. Andrews, Director

Office for Sponsored Programs

John M. Carfora, Director

Student Affairs

Sheilah S. Horton, Associate Vice President

James Kreinbring, Executive Assistant to the Vice President

Student Development

Robert A. Sherwood, Dean

Student Services

Louise M. Lonabocker, Director

Theater Arts Center

Howard Enoch, Director

Associate Treasurer

Paul P. Haran, Associate Treasurer and Director of Investments

Volunteer & Service Learning Center

Daniel P. Ponsetto, Director

Center on Wealth & Philanthropy

Paul G. Schervish, Director

Weston Observatory

John E. Ebel, Director

Winston Center for Leadership & Ethics

Richard Keely, Program Director

Mary Ann Glynn, Research Director

Center for Work and Family

J. Bradley Harrington, Executive Director

Source: Department of Human Resources

DEPARTMENT CHAIRPERSONS 2006-2007

Arts & Sciences

Biology Thomas Chiles

Chemistry Amir H. Hoveyda

Classical Studies..... Charles F. Ahern

CommunicationDale Herbeck

Computer Science.....Robert Muller

Economics Marvin C. Kraus

English..... Mary Crane

Fine Arts..... John Michalczyk

Geology &
Geophysics..... Alan L. Kafka

German Studies.....Michael Resler

HistoryMarilynn Johnson

MathematicsGerard E. Keough

Music T. Frank Kennedy

PhilosophyPatrick Byrne

Physics..... Kevin Bedell

Political Science..... Susan Shell

Psychology James Russell

Romance Languages
& Literatures..... Dwayne E. Carpenter

Slavic & Eastern
Languages Maxim Shrayer

Sociology Juliet Schor

Theatre..... John H. Houchin

Theology.....Kenneth Himes

Carroll School of Management

Accounting.....Billy Soo

Business Law Christine N. O'Brien

Finance Hassan Tehranian

Information Systems.....James Gips

Marketing.....Gerald Smith

Operations & Strategic
Management Samuel B. Graves

Organization StudiesStephen Borgatti

Connell School of Nursing

Adult Health..... Robin Wood

Community
Health..... Katherine Frame

Maternal &
Child HealthSandra Mott

Psychiatric/Mental
Health..... Anne Norris

Lynch School of Education

Counseling, Developmental
& Educational
Psychology..... Elizabeth Sparks

Educational Administration
& Higher EducationIrwin Blumer

Educational Research,
Measurement
& Evaluation.....Larry H. Ludlow

Teacher Education/Special
Education, Curriculum &
Instruction..... Audrey Friedman

Source: Office of the Provost and Dean of Faculties

Note: Data for 2006-2007 CSOM departments have been adjusted from incorrect listing of Operations, Information, & Strategic

Management to correct listings of Information Systems and Operations & Strategic Management on March 7, 2007.

PROFESSIONAL, ADMINISTRATIVE, AND SUPPORT STAFF PERSONNEL By Gender, Fall 2006

	Full-Time Positions					Part-Time Positions					Total	Total
	Men	Women	Open	Total	FTE	Men	Women	Open	Total	FTE	Positions	FTE
Professional Administrative												
Dean of Faculties*	123	226	19	368	368.00	18	18	4	40	20.95	408	388.95
Student Affairs	39	58	6	103	103.00	13	15	3	31	8.76	134	111.76
Athletics	70	33	4	107	107.00	13	7	1	21	5.27	128	112.27
Information Technology	109	43	16	168	168.00	1	3	-	4	2.40	172	170.40
Financial Vice President**	64	49	6	119	119.00	-	2	-	2	1.14	121	120.14
University Relations	24	72	16	112	112.00	1	2	-	3	1.70	115	113.70
Campus Facilities	45	8	6	59	59.00	1	-	-	1	0.54	60	59.54
President***	45	22	1	68	68.00	4	3	-	7	3.94	75	71.94
Human Resources	9	28	2	39	39.00	1	1	-	2	0.63	41	39.63
Executive Vice President****	-	7	2	9	9.00	-	-	-	-	-	9	9.00
Total	528	546	78	1,152	1,152.00	52	51	8	111	45.33	1263	1,197.33
Secretarial, Clerical, Technical												
Secretarial/Clerical	52	322	35	409	409.00	6	63	8	77	41.38	486	450.38
Library Assistants	22	38	1	61	61.00	2	9	1	12	7.71	73	68.71
Technical, Other	39	8	2	49	49.00	-	-	-	-	-	49	49.00
Total	113	368	38	519	519.00	8	72	9	89	49.09	608	568.09
Facilities, Plant Services												
Dining Services	107	59	9	175	175.00	5	16	2	23	16.63	198	191.63
Housekeeping	104	50	4	158	158.00	-	-	-	-	-	158	158.00
Grounds & Trades	103	1	4	108	108.00	-	-	-	-	-	108	108.00
Gate Attendants, Police	56	9	2	67	67.00	9	3	1	13	8.45	80	75.45
Mailroom, Switchboard	11	3	-	14	14.00	3	1	-	4	2.20	18	16.20
Total	381	122	19	522	522.00	17	20	3	40	27.28	562	549.28
Total Positions	1,022	1,036	135	2,193	2,193.00	77	143	20	240	121.70	2,433	2,314.70

* Includes academic administration, Student Services, and all library professional administrative staff

** Includes financial and business departments, Bookstore, Boston College Police, Bureau of Conferences, Dining Services

*** Includes Office of the President, Office of the Senior Vice President, Mission and Ministry, Boston College Neighborhood Center, Marketing Communications, Public Affairs, Governmental and Community Affairs, University General Counsel, University Historian, University Secretary, and all Executives

**** Includes the Offices of Space Planning and Institutional Research

Note: The above figures represent all permanent positions funded by the University as of September 30, 2006. Restricted funded positions are not included. Positions funded partially by outside contracts or grants are counted above as part-time University Positions. During 2006-2007, employee count changes to the Information Technology Services area were due to 20 position conversions from contractor to permanent status.

Source: Department of Human Resources

RESTRICTED FUNDED PERSONNEL By Gender and FTE, Fall 2006

	Full-Time Positions				Part-Time Positions				Total	Total
	Men	Women	Total	FTE	Men	Women	Total	FTE	Positions	FTE
Faculty	1	-	1	1.00	-	-	-	-	1	1.00
Professional, Administrative	10	25	35	35.00	16	26	42	24.90	77	59.90
Research Associate or Assistant	49	60	109	109.00	1	1	2	1.30	111	110.30
Secretarial, Clerical, Technical	1	5	6	6.00	-	9	9	2.60	15	8.60
Total Positions	61	90	151	151.00	17	36	53	28.80	204	179.80

Note: Incremental restricted funded positions supported entirely by Contract & Grant, Endowment or Restricted Gift funding as of September 30, 2006.

Source: Department of Human Resources

FACULTY BY SCHOOL AND RANK*

2005-2006

School	Professor		Associate		Assistant		Instructor		Total		Faculty on leave**
	No.	%	No.	%	No.	%	No.	%	No.	%	
Arts & Sciences	159	38%	153	36%	95	23%	15	4%	422	100%	30.5
Education	23	43%	16	30%	15	28%	-	-	54	100%	3
Law	26	57%	16	34%	4	9%	-	-	46	100%	4.5
Management	24	26%	36	39%	22	24%	10	11%	92	100%	4
Nursing	9	21%	15	34%	9	20%	11	25%	44	100%	1
Social Work	5	24%	10	48%	5	24%	1	5%	21	100%	1
Total	246	36%	246	36%	150	22%	37	6%	679	100%	44

* Includes all full-time regular faculty members

** Includes faculty members who were on unpaid leave for all or part of the 2005-06 academic year

Source: Office of the Provost and Dean of Faculties

FACULTY BY SCHOOL AND GENDER

2005-2006

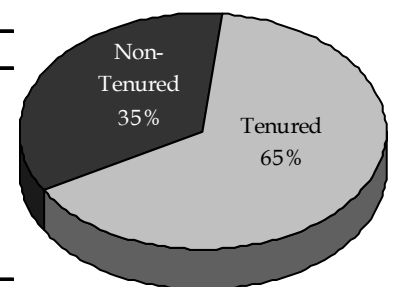
School	Women		Men		Total	
	No.	%	No.	%	No.	%
Arts & Sciences	128	30%	294	70%	422	100%
Education	28	52%	26	48%	54	100%
Law	20	43%	26	57%	46	100%
Management	30	33%	62	67%	92	100%
Nursing	41	93%	3	7%	44	100%
Social Work	12	57%	9	43%	21	100%
Total	259	38%	420	62%	679	100%

Source: Office of the Provost and Dean of Faculties

FACULTY BY SCHOOL AND TENURE STATUS

2005-2006

School	Tenured Faculty		Non-Tenured Faculty		Total	
	No.	%	No.	%	No.	%
Arts & Sciences	270	64%	152	36%	422	100%
Education	37	69%	17	31%	54	100%
Law	36	78%	10	22%	46	100%
Management	60	65%	32	35%	92	100%
Nursing	24	55%	20	45%	44	100%
Social Work	13	62%	8	38%	21	100%
Total	440	65%	239	35%	679	100%



Source: Office of the Provost and Dean of Faculties

FACULTY BY HIGHEST DEGREE EARNED AND GENDER 2005-2006

Degree	Women		Men		Total	
	No.	%	No.	%	No.	%
Doctorate	235	91%	407	97%	642	95%
Master's	24	9%	13	3%	37	5%
Total	259	100%	420	100%	679	100%

Source: Office of the Provost and Dean of Faculties

FACULTY BY RANK AND GENDER 2005-2006

Rank	Women		Men		Total	
	No.	%	No.	%	No.	%
Professor	70	27%	176	42%	246	36%
Associate	93	36%	153	36%	246	36%
Assistant	72	28%	78	19%	150	23%
Instructor	24	9%	13	3%	37	5%
Total	259	100%	420	100%	679	100%

Source: Office of the Provost and Dean of Faculties

95% of Boston College faculty members hold a doctoral degree.

FULL-TIME EQUIVALENT FACULTY, TEACHING FELLOWS, AND TEACHING ASSISTANTS By School, 2005-2006

School	FTE of Full-Time Faculty		FTE of Part-Time Faculty		FTE of Fellows & Assistants		Total FTE Faculty	
	No.	%	No.	%	No.	%	No.	%
Arts & Sciences	392.45	61%	104.66	55%	126.67	76%	623.78	63%
Education	50.50	8%	20.66	11%	29.34	18%	100.50	10%
Management	85.00	13%	21.66	12%	1.34	1%	108.00	11%
Nursing	45.00	7%	11.33	6%	6.75	4%	63.08	6%
Law	47.50	8%	8.66	5%	1.67	1%	57.83	6%
Social Work	21.00	3%	21.00	11%	0.67	0%	42.67	4%
Total	641.45	100%	187.97	100%	166.44	100%	995.86	100%

Source: Office of the Provost and Dean of Faculties

FULL-TIME FACULTY, TEACHING FELLOWS, AND TEACHING ASSISTANTS By School and Department, 2005-2006

	Full-Time Faculty	Teaching Fellows	Teaching Assistants
Arts & Sciences			
Biology	22	-	34
Chemistry	22	-	60
Classics	5	1	-
Communication	19.5	-	-
Computer Science	14	-	-
Economics	27	10	44
English	46.5	28	-
Fine Arts	17	-	-
Geology	7	-	13
Germanic Studies	3	-	-
History	39	12	18
Honors Program	11	-	-
Mathematics	24	10	6
Music	5	-	-
Philosophy	31	22	5
Physics	16	-	23
Political Science	22	2	-
Psychology	21	1	14
Religion and American Public Life	2	2	-
Romance Languages	22	31	-
Slavic	5	-	-
Sociology	18.5	9	16
Theater	7	-	-
Theology	46	7	14
Total Arts and Sciences	452.5	135	247
Education	57	33	55
Law	50.5	-	5
Management	96	4	-
Nursing	45	-	3
Social Work	22	2	-
Total	723	174	310

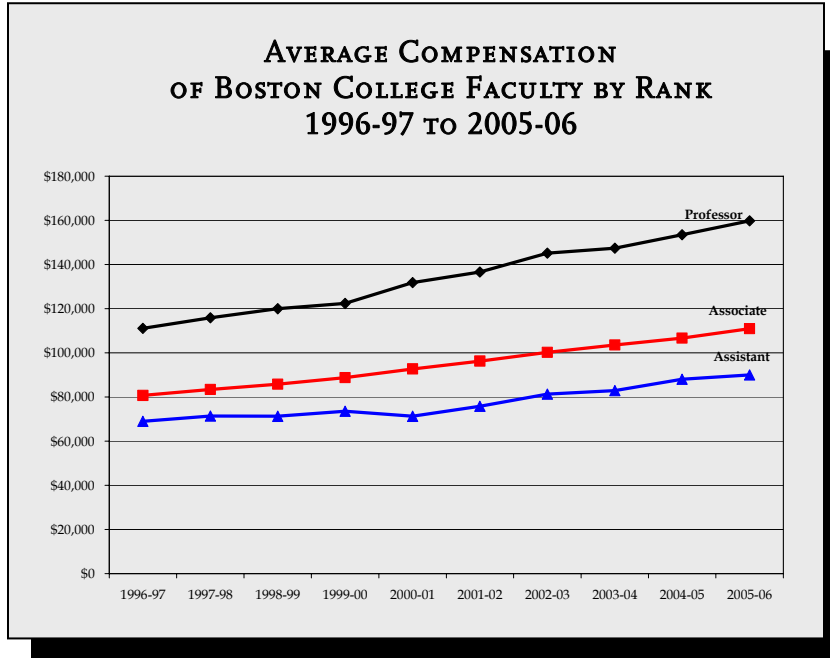
* Includes faculty on leave

Source: Office of the Provost and Dean of Faculties

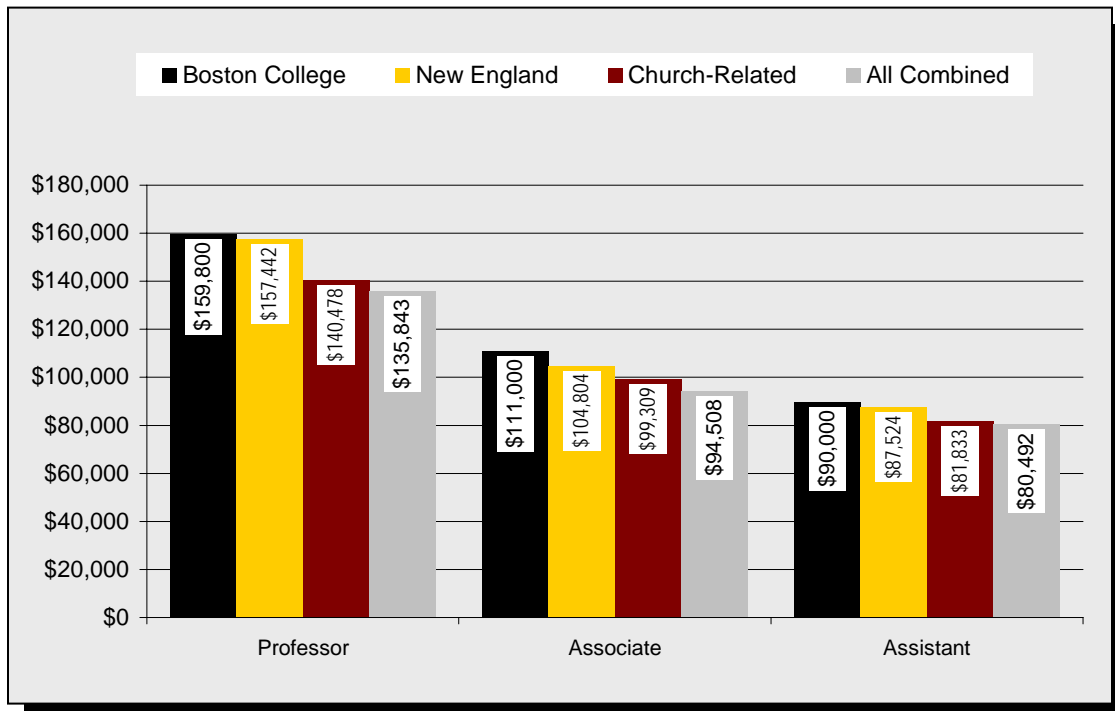
FACULTY COMPENSATION* Average by Rank

Year	Professor	Associate	Assistant
1996-97	\$111,100	\$80,700	\$69,000
1997-98	\$115,900	\$83,400	\$71,400
1998-99	\$120,000	\$85,800	\$71,300
1999-00	\$122,387	\$88,815	\$73,542
2000-01	\$131,800	\$92,700	\$71,300
2001-02	\$136,600	\$96,300	\$75,800
2002-03	\$145,170	\$100,228	\$81,313
2003-04	\$147,392	\$103,577	\$82,912
2004-05	\$153,500	\$106,700	\$88,100
2005-06	\$159,800	\$111,000	\$90,000

* Includes salary and fringe benefits
Source: Office of the Provost and Dean of Faculties



FACULTY COMPENSATION BY RANK* Boston College Average Compared to AAUP Category I (9-Month Equivalent), 2005-2006



* Includes salary and fringe benefits
Source: Office of the Provost and Dean of Faculties; AAUP

