

RESEARCH & SPONSORED PROJECTS

PHOTO

Highlights of Sponsored Activities, 2001-2002

A total of 256 proposals were submitted in FY2002. The amount of funding requested for the total project period for these proposals was \$149,984,138.

In FY2001, a record was set for the dollar amount of award obligations received. There were 282 sponsored project award obligations made in FY2002 for a total of \$39,642,198. The total amount of award obligations received in FY2002 was approximately 10% higher than those received in FY2001. This is an indication of the continued success of Boston College faculty.

Overall, there remains a general upward trend in sponsored project activities at Boston College. There is a greater number of faculty working with the Office for Sponsored Programs to secure external funding from both Federal and non-Federal sponsors.

Source: Office of Sponsored Programs

Summary of Sponsored Project Awards, 2001-2002

| | Number of Awards | Award Total | | Number of Awards | Award Total |
|---------------------------------------|------------------|--------------|--|------------------|----------------------|
| Associate Vice President for Research | 2 | \$ 3,235,469 | School of Education | 23 | 2,842,716 |
| Biology | 24 | 3,111,080 | Campus School | 8 | 2,556,934 |
| Chemistry | 40 | 5,782,986 | CSTEPP | 12 | 1,478,245 |
| Computer Science | 1 | 65,800 | TIMSS | 16 | 3,871,354 |
| Economics | 4 | 216,190 | Law School | 7 | 170,856 |
| Fine Arts | 5 | 129,000 | School of Management | 7 | 549,640 |
| Geology and Geophysics* | 9 | 464,772 | School of Nursing | 16 | 1,280,714 |
| History | 1 | 18,000 | Graduate School of Social Work | 13 | 667,655 |
| Institute for Scientific Research | 34 | 4,570,284 | Center for Corporate Citizenship | 3 | 839,350 |
| Mathematics | 4 | 163,132 | Center for Child, Family & | | |
| Philosophy | 1 | 61,359 | Community Partnerships | 12 | 640,702 |
| Physics | 15 | 4,307,287 | Center for Religion & American Public Life | 3 | 152,559 |
| Political Science | 5 | 317,651 | Center for Work and Family | 1 | 33,500 |
| Psychology | 3 | 342,439 | Irish Institute | 3 | 818,232 |
| Romance Languages | 1 | 1,200 | Learning to Learn | 2 | 223,778 |
| Sociology | 4 | 115,451 | Social Welfare Research Institute | 1 | 444,585 |
| Theology | 1 | 70,000 | Other | 1 | 99,278 |
| | | | TOTAL | 282 | \$ 39,642,198 |

*Includes Weston Observatory.

Source: Office of Sponsored Programs

Sponsored Projects*

Source and Application of Funding (Thousands of Dollars)

| | 1998 | 1999 | 2000 | 2001 | 2002 |
|----------------------------|-----------------|-----------------|-----------------|-----------------|-----------------|
| Source | | | | | |
| Government: | | | | | |
| Federal | \$ 20,182 | \$ 22,760 | \$ 25,449 | \$ 28,677 | \$ 31,513 |
| State | 1,415 | 1,326 | 1,908 | 1,858 | 2,060 |
| Local | 1,913 | 2,005 | 3,118 | 2,741 | 2,333 |
| Corporations & Foundations | 2,603 | 4,592 | 5,895 | 6,184 | 7,144 |
| Total | \$26,113 | \$30,683 | \$36,370 | \$39,460 | \$43,050 |
| Application | | | | | |
| Sponsored Research | \$ 14,608 | \$ 18,700 | \$ 22,860 | \$ 23,796 | \$26,296 |
| Other Sponsored Programs | 4,961 | 5,112 | 6,240 | 8,234 | 8,675 |
| Student Aid | 6,544 | 6,871 | 7,270 | 7,430 | 8,079 |
| Total | \$26,113 | \$30,683 | \$36,370 | \$39,460 | \$43,050 |

* The amounts represent actual accounted expenditures (including Pell Grants) for the referenced fiscal year.

Source: Office of the Controller

Sponsored Projects by Department

Total Accounted Expense (Thousands of Dollars)

| | 1992-93 | 1993-94 | 1994-95 | 1995-96 | 1996-97 | 1997-98 | 1998-99 | 1999-00 | 2000-01 | 2001-02 |
|---|---------------|---------------|---------------|---------------|---------------|---------------|---------------|---------------|---------------|---------------|
| College of Arts & Sciences | 97 | 60 | 56 | 194 | 192 | 142 | 52 | 15 | - | - |
| Initiatives on Aging | - | - | - | - | - | - | - | - | - | 609 |
| International Programs | - | - | - | - | - | - | - | 65 | 71 | 26 |
| Biology | 551 | 751 | 937 | 1,085 | 1,330 | 1,295 | 1,170 | 1,477 | 1,682 | 2,087 |
| Chemistry | 2,185 | 2,612 | 3,193 | 3,353 | 3,270 | 3,350 | 4,642 | 4,429 | 4,950 | 5,553 |
| Geology & Geophysics ¹ | 536 | 516 | 390 | 603 | 497 | 538 | 468 | 384 | 480 | 611 |
| Mathematics Department and Institute | 246 | 674 | 679 | 710 | 691 | 404 | 152 | 287 | 257 | 319 |
| Physics | 210 | 147 | 165 | 180 | 184 | 337 | 636 | 1,612 | 1,425 | 1,704 |
| Fine Arts | - | 10 | 2 | - | 8 | 24 | 94 | 32 | 83 | 92 |
| McMullen Art Museum | - | - | 58 | 46 | - | - | 48 | 38 | 6 | 4 |
| Theology | 241 | 362 | 223 | 240 | 309 | 370 | 243 | 222 | 123 | 97 |
| Economics | 108 | 168 | 97 | 269 | 341 | 336 | 233 | 109 | 115 | 93 |
| History | 69 | 43 | 19 | 1 | - | 92 | 89 | 70 | 54 | 71 |
| Political Science | 55 | 37 | 61 | 47 | 1 | 151 | 116 | 214 | 268 | 270 |
| Psychology | 157 | 146 | 250 | 201 | 216 | 356 | 283 | 350 | 511 | 449 |
| Sociology | 4 | 28 | 51 | 49 | 95 | 192 | 246 | 214 | 28 | 82 |
| Lynch School of Education | 2,102 | 1,941 | 2,348 | 2,675 | 2,969 | 2,676 | 3,297 | 3,902 | 3,962 | 3,500 |
| TIMSS International Study Center | - | - | - | - | - | - | - | 5,186 | 5,299 | 4,154 |
| Law School | 96 | 176 | 369 | 282 | 276 | 201 | 131 | 342 | 349 | 434 |
| Carroll School of Management | 512 | 535 | 521 | 511 | 481 | 481 | 688 | 1,617 | 2,375 | 2,563 |
| Irish Institute | - | - | - | - | - | 475 | 920 | 741 | 589 | 774 |
| School of Nursing | 256 | 372 | 375 | 441 | 444 | 521 | 554 | 518 | 396 | 813 |
| Graduate School of Social Work | 450 | 473 | 365 | 229 | 305 | 402 | 310 | 561 | 553 | 856 |
| Center for Corporate Citizenship | 26 | 90 | 26 | 2 | 33 | 45 | 199 | 212 | 88 | 90 |
| Center for Work and Family | - | - | - | - | 36 | 269 | 301 | 308 | 693 | 57 |
| Boisi Center for Religion and American Public Life | - | - | - | - | - | - | - | - | 125 | 108 |
| Social Welfare Research Inst. | 169 | 115 | 123 | 141 | 178 | 173 | 155 | 171 | 261 | 275 |
| O'Neill Library | 12 | 25 | 732 | 1,029 | 268 | 28 | 3 | - | - | - |
| Center for Testing | 1,192 | 1,237 | 2,655 | 2,819 | 2,613 | 3,274 | 4,715 | 1,112 | 2,584 | 3,210 |
| Student Aid | 5,446 | 5,324 | 5,513 | 5,672 | 5,863 | 6,544 | 6,871 | 7,270 | 7,430 | 8,051 |
| Center for Ignatian Spirituality | - | - | - | - | - | - | - | 33 | 16 | 1 |
| Mission & Ministry | - | - | - | - | - | - | - | - | 78 | 635 |
| Institute for Scientific Research | 4,247 | 3,723 | 2,981 | 3,206 | 3,421 | 3,182 | 3,417 | 3,999 | 4,048 | 4,771 |
| Center for Child, Family, & Community Partnerships | - | - | - | - | - | - | 397 | 618 | 339 | 369 |
| Learning to Learn | 143 | 151 | 150 | 141 | 142 | 152 | 161 | 177 | 184 | 229 |
| Athletics | 62 | 71 | 78 | 66 | 65 | 65 | 62 | 71 | - | - |
| Other ² | 115 | 42 | 46 | 124 | 95 | 38 | 30 | 14 | 38 | 93 |
| Total | 19,287 | 19,829 | 22,463 | 24,316 | 24,323 | 26,113 | 30,683 | 36,370 | 39,460 | 43,050 |

¹ Includes Weston Observatory

² Other includes Philosophy, Music, Black Studies, Romance Languages, Slavic/Eastern Languages, IRE/Pastoral Ministry, Burns Library, Student Development, Human Resources, Jesuit Institute, AVP-Dean of Faculties.

Source: Office of the Controller

Number and Dollar Amount of Sponsored Project Awards Received By Department (Dollars in Thousands)

| | 1992-93 | | 1993-94 | | 1994-95 | | 1995-96 | | 1996-97 | | 1997-98 | | 1998-99 | | 1999-00 | | 2000-01 | | 2001-02 | |
|---------------------------------|------------|-----------------|------------|-----------------|------------|-----------------|------------|-----------------|------------|-----------------|------------|-----------------|------------|-----------------|------------|-----------------|------------|-----------------|------------|-----------------|
| | # | \$ | # | \$ | # | \$ | # | \$ | # | \$ | # | \$ | # | \$ | # | \$ | # | \$ | # | \$ |
| Assoc. VP-Research | - | - | - | - | - | - | - | - | - | - | - | - | - | - | 2 | 1,717 | 1 | 1,779 | 2 | 3,235 |
| Biology | 9 | 572 | 10 | 1,084 | 12 | 923 | 15 | 1,274 | 16 | 1,395 | 12 | 1,109 | 17 | 2,047 | 16 | 1,453 | 17 | 1,947 | 24 | 3,111 |
| Chemistry | 30 | 2,439 | 33 | 3,232 | 34 | 3,255 | 35 | 3,369 | 38 | 3,769 | 46 | 4,376 | 40 | 4,027 | 52 | 4,746 | 45.5 | 6,323 | 40 | 5,783 |
| Computer Science | - | - | - | - | - | - | - | - | - | - | - | - | 2 | 283 | - | - | 1 | 63 | 1 | 66 |
| Economics | 3 | 83 | 2 | 75 | 8 | 253 | 6 | 348 | 5 | 372 | 2 | 266 | 4 | 158 | 3 | 147 | 1 | 64 | 4 | 216 |
| English | - | - | - | - | - | - | - | - | - | - | - | - | - | - | - | - | - | - | - | - |
| Fine Arts | - | - | 2 | 25 | 3 | 57 | 2 | 38 | 1 | 20 | 1 | 10 | 4 | 193 | 3 | 40 | 6 | 94 | 5 | 129 |
| Geology/Geophysics ¹ | 8 | 482 | 7 | 530 | 5 | 805 | 5 | 433 | 4 | 239 | 8 | 467 | 10 | 461 | 9 | 469 | 6.5 | 573 | 9 | 465 |
| Grad. School of A&S | - | - | 1 | 50 | 2 | 52 | 3 | 75 | 1 | 48 | 1 | 41 | 1 | 25 | 1 | 25 | - | - | - | - |
| History | - | - | 2 | 63 | 1 | 2 | - | - | - | - | 3 | 161 | - | - | 1 | 150 | 3 | 56 | 1 | 18 |
| IREPM ² | - | - | - | - | - | - | - | - | - | - | 1 | 28 | - | - | 1 | 7 | - | - | - | - |
| Inst. for Scien. Research | 14 | 3,935 | 14 | 3,409 | 15 | 2,926 | 16 | 3,786 | 13 | 3,510 | 17 | 3,062 | 15 | 3,587 | 15 | 4,489 | 42 | 4,893 | 34 | 4,570 |
| Mathematics ³ | 2 | 47 | 2 | 788 | 2 | 793 | 1 | 737 | 2 | 69 | 3 | 174 | 5 | 246 | 4 | 356 | 5 | 275 | 4 | 163 |
| Music | - | - | - | - | - | - | - | - | 1 | 50 | - | - | - | - | - | - | - | - | - | - |
| Philosophy | - | - | 1 | 90 | - | - | 2 | 45 | 1 | 30 | - | - | 1 | 17 | - | - | - | - | 1 | 61 |
| Physics | 7 | 127 | 4 | 170 | 4 | 216 | 3 | 173 | 10 | 323 | 11 | 366 | 18 | 1,234 | 25 | 1,807 | 21 | 1,393 | 15 | 4,307 |
| Political Science | 2 | 31 | 1 | 35 | 3 | 89 | 2 | 32 | 3 | 107 | 6 | 152 | 10 | 281 | 4 | 144 | 6 | 303 | 5 | 62 |
| Psychology | 4 | 177 | 6 | 203 | 7 | 232 | 8 | 265 | 5 | 193 | 5 | 448 | 8 | 441 | 5 | 121 | 9 | 542 | 3 | 342 |
| Romance Languages | - | - | 1 | 4 | - | - | - | - | - | - | - | - | 1 | 1 | - | - | 1 | 2 | 1 | 1 |
| Slavic/Eastern Languages | - | - | - | - | - | - | 1 | 40 | 1 | 4 | 2 | 33 | 1 | 12 | - | - | - | - | - | - |
| Sociology | - | - | 2 | 147 | - | - | 1 | 5 | 5 | 163 | 6 | 283 | 4 | 238 | 3 | 44 | 1 | 38 | 4 | 115 |
| SWRI ⁴ | 2 | 133 | 1 | 109 | 2 | 92 | 2 | 153 | 2 | 233 | 2 | 367 | 1 | 100 | 2 | 270 | - | - | 1 | 445 |
| Theology | 2 | 287 | 6 | 385 | 2 | 341 | 2 | 325 | 4 | 324 | 4 | 343 | 4 | 226 | 3 | 125 | 2 | 120 | 1 | 70 |
| School of Education | 12 | 794 | 11 | 642 | 17 | 1,172 | 18 | 816 | 27 | 1,281 | 26 | 1,431 | 29.5 | 2,398 | 38 | 3,691 | 33 | 2,705 | 23 | 2,843 |
| Campus School | 4 | 1,421 | 5 | 1,456 | 5 | 1,519 | 4 | 1,804 | 5 | 1,874 | 6 | 1,816 | 5 | 2,045 | 9 | 2,174 | 6 | 2,442 | 8 | 2,557 |
| CSTECP ⁵ | 9 | 1,204 | 7 | 2,333 | 4 | 2,977 | 9 | 2,278 | 11 | 2,920 | 1 | 4,974 | 28 | 6,451 | 12 | 702 | 12 | 2,313 | 12 | 1,478 |
| TIMSS ⁶ | - | - | - | - | - | - | - | - | - | - | - | - | - | - | 24 | 5,167 | 20 | 3,635 | 16 | 3,871 |
| Law School | - | - | 2 | 252 | 3 | 334 | 4 | 379 | 2 | 77 | 3 | 51 | 3 | 172 | 5 | 303 | 3.5 | 222 | 7 | 171 |
| School of Management | 3 | 486 | 5 | 557 | 4 | 533 | 2 | 451 | 5 | 492 | 4 | 552 | 6 | 1,874 | 9 | 694 | 17 | 1,038 | 7 | 550 |
| School of Nursing | 10 | 340 | 10 | 342 | 9 | 374 | 12 | 559 | 11 | 498 | 12 | 513 | 12 | 445 | 10 | 306 | 13 | 768 | 16 | 1,281 |
| Grad. Schl. of Social Work | 6 | 501 | 7 | 292 | 9 | 299 | 6 | 326 | 11 | 720 | 8 | 149 | 7.5 | 199 | 16 | 793 | 12 | 1,045 | 13 | 668 |
| CCFCP ⁷ | - | - | - | - | - | - | - | - | 1 | 159 | 1 | 100 | 7 | 1,542 | 1 | 410 | 16 | 198 | 12 | 641 |
| BCRAPL ⁸ | - | - | - | - | - | - | - | - | - | - | - | - | - | 2 | 297 | 1 | 40 | 3 | 153 | |
| CCCR ⁹ | - | - | 3 | 41 | - | - | - | - | - | - | - | - | 3 | 570 | - | - | - | - | 3 | 839 |
| Center for Work & Family | - | - | - | - | - | - | - | - | 2 | 86 | 13 | 452 | 6 | 199 | 4 | 398 | 4 | 72 | 1 | 34 |
| Irish Institute | - | - | - | - | - | - | - | - | - | - | 2 | 1,100 | 2 | 1,100 | 2 | 220 | 3 | 685 | 3 | 818 |
| Learning to Learn | - | - | - | - | - | - | - | - | 1 | 175 | - | - | 1 | 189 | 2 | 198 | 21 | 201 | 2 | 224 |
| Other | 104 | 426 | 4 | 220 | 5 | 2,239 | 6 | 335 | 2 | 69 | 3 | 248 | 2 | 135 | - | - | 2.5 | 2,092 | 1 | 99 |
| Total | 137 | \$13,487 | 149 | \$16,531 | 156 | \$19,480 | 165 | \$18,046 | 190 | \$19,202 | 224 | \$23,069 | 258 | \$30,894 | 283 | \$31,467 | 312 | \$35,940 | 282 | \$39,642 |

¹ Includes Weston Observatory.² The Institute of Religious Education and Pastoral Ministry (IREPM).³ Includes the Mathematics Institute.⁴ The Social Welfare Research Institute (SWRI).⁵ The Center for the Study of Testing, Evaluation, and Educational Policy (CSTECP).⁶ TIMSS International Study Center (TIMSS).⁷ The Center for Child, Family, and Community Partnerships (CCFCP).⁸ The Boisi Center for Religion & American Public Life (BCRAPL).⁹ The Center for Corporate Community Relations (CCCR).

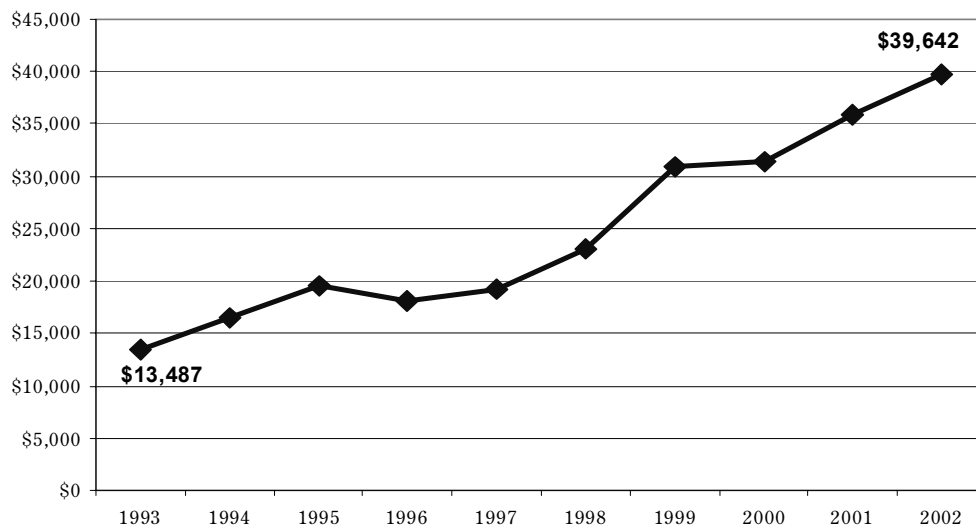
Note: Student aid funds managed by the Financial Aid Office are *not* included in this table. (They *are* included in other tables in this section provided by the Controller's Office.) In some cases dollar amounts in columns may not add to the column total due to rounding.

Source: Office of Sponsored Programs

Sponsored Project Awards Received

Fiscal Year 1992-1993 through 2001-2002 (Dollars in Thousands)

Growth in Sponsored Project Awards Received
Fiscal Year 1992-1993 through 2001-2002
 (Dollars in Thousands)



Note: Student aid funds managed by the Financial Aid Office are *not* included in this chart.

The dollar amount of Sponsored Project Awards at Boston College increased by 194% between 1993 and 2002.

Number of Sponsored Project Proposals Submitted By Department

| | 1992-93 | 1993-94 | 1994-95 | 1995-96 | 1996-97 | 1997-98 | 1998-99 | 1999-00 | 2000-01 | 2001-02 |
|----------------------------------|------------|------------|------------|------------|------------|------------|------------|------------|------------|------------|
| College of Arts & Sciences | - | - | 1 | 1 | - | - | 1 | 1 | 1 | - |
| Assoc. VP for Research | - | - | - | - | - | - | 1 | 1 | 7 | 6 |
| Biology | 23 | 23 | 26 | 21 | 31 | 31 | 34 | 20 | 20 | 25 |
| Black Studies | - | - | 2 | - | - | - | - | - | - | - |
| Chemistry | 36 | 35 | 39 | 47 | 57 | 48 | 46 | 46 | 41 | 38 |
| Classical Studies | - | - | - | - | - | - | - | - | 1 | - |
| Communications | - | - | - | - | - | - | - | - | 1 | 1 |
| Computer Science | - | - | - | - | - | 6 | - | 3 | 4 | 1 |
| Economics | 3 | 7 | 10 | 8 | 7 | 5 | 9 | 2 | 1 | 2 |
| English | - | 1 | - | - | 1 | 1 | - | 1 | 1 | - |
| Fine Arts | 5 | 4 | 4 | 4 | 2 | 3 | 2 | 8 | 19 | 4 |
| Geology/Geophysics ¹ | 15 | 14 | 12 | 13 | 12 | 21 | 21 | 19 | 14 | 8 |
| Germanic Studies | - | - | - | - | 1 | - | - | - | - | 1 |
| Graduate School of A&S | - | - | 2 | - | - | 2 | 1 | 1 | - | 1 |
| History | 2 | 5 | 3 | 1 | 3 | 3 | 1 | 1 | 1 | 2 |
| Honors Program | - | - | - | 1 | - | - | - | - | 1 | 1 |
| Inst. for Scien. Research | 11 | 7 | 13 | 10 | 12 | 4 | 10 | 6 | 23 | 7 |
| Mathematics ² | 2 | 3 | 3 | 3 | 2 | 7 | 7 | 1 | 9 | 8 |
| Mission and Ministry | - | - | - | - | - | - | - | - | 1 | - |
| Music | - | - | - | - | - | - | - | 1 | 1 | - |
| Philosophy | 1 | - | 1 | 3 | 1 | - | 1 | - | 1 | - |
| Physics | 7 | 10 | 5 | 7 | 22 | 12 | 26 | 28 | 28 | 26 |
| Political Science | - | 1 | 1 | 3 | 3 | 7 | 8 | 4 | 7 | 4 |
| Psychology | 8 | 17 | 14 | 6 | 8 | 13 | 10 | 16 | 18 | 9 |
| Romance Languages | - | 3 | - | - | - | - | 1 | 1 | 1 | 1 |
| Slavic/Eastern Languages | - | - | - | 2 | 3 | 2 | 5 | 5 | 1 | - |
| Sociology | 6 | 4 | 6 | 5 | 8 | 6 | 7 | 6 | - | 6 |
| SWRI ³ | 3 | 2 | 1 | 3 | 2 | 1 | 1 | 2 | - | 1 |
| Theology | 1 | 5 | 1 | 2 | 2 | 1 | 2 | 2 | 2 | 2 |
| School of Education | 16 | 20 | 33 | 31 | 43 | 36 | 42 | 27 | 27 | 21 |
| Campus School | 3 | 5 | 8 | 5 | 4 | 5 | 5 | 5 | 5 | 6 |
| CSTECP ⁴ | 7 | 7 | 6 | 13 | 13 | 23 | 21 | 25 | 14 | 11 |
| TIMSS ⁵ | - | - | - | - | - | - | - | - | 6 | 8 |
| Law School | 3 | 3 | 5 | 2 | 3 | 3 | 5 | 5 | 3 | 7 |
| School of Management | 5 | 5 | 4 | 1 | 9 | 3 | 6 | 4 | 4 | 4 |
| School of Nursing | 27 | 14 | 18 | 21 | 16 | 12 | 18 | 16 | 18 | 11 |
| Grad. Schl. of Social Work | 12 | 10 | 7 | 15 | 12 | 13 | 8 | 11 | 14 | 12 |
| CCFCP ⁶ | - | - | - | - | 1 | 1 | 13 | 10 | 20 | 17 |
| CCC ⁷ | - | 1 | - | 1 | 1 | 3 | 2 | - | 4 | 1 |
| Center for Ignatian Spirituality | - | - | - | - | - | - | - | 1 | - | - |
| BCRAPL ⁸ | - | - | - | - | - | - | - | 3 | 2 | 4 |
| Center for Work & Family | - | - | - | - | 5 | 12 | 5 | 2 | 5 | 1 |
| International Programs | - | 1 | - | - | - | - | - | - | - | - |
| Irish Institute | - | - | - | - | - | 1 | 2 | 4 | 2 | 2 |
| Jesuit Institute | - | 1 | - | - | 1 | - | - | - | - | - |
| Learning to Learn | - | 1 | 1 | 1 | 1 | 1 | - | 1 | 1 | - |
| Other | 9 | 3 | 3 | 1 | 2 | 5 | 4 | 3 | 1 | - |
| Total | 205 | 212 | 229 | 231 | 288 | 291 | 326 | 292 | 329 | 256 |

¹ Includes Weston Observatory² Includes the Mathematics Institute³ The Social Welfare Research Institute (SWRI)⁴ The Center for the Study of Testing, Evaluation, and Educational Policy (CSTECP)⁵ Trends in International Mathematics and Science Study (TIMSS)⁶ The Center for Child, Family, and Community Partnerships (CCFCP)⁷ The Center for Corporate Citizenship (CCC)⁸ The Boisi Center for Religion and American Public Life (BCRAPL)

Source: Office of Sponsored Programs

Selected Sponsored Project Awards 2001-2002

| Title | Source of Funding | Amount |
|---|--|------------------------|
| Biology Department Nuclear Import Pathways for HPV Macromolecules | National Institutes of Health | \$246,810 |
| Chemistry Department A Molecular Motor New Carbon-Rich Compounds with Unusual Structures and Properties | National Institutes of Health National Science Foundation | \$310,170 \$205,700 |
| Economics Topics in Factor Analysis of Large Dimensions | National Science Foundation | \$71,404 |
| Geology and Geophysics Department The Impact of CO ₂ Fertilization on Soil Carbon Storage Below a Forest | U.S. Department of Agriculture | \$99,903 |
| Institute for Scientific Research Comprehensive Studies of the Dynamic Space Environment | U.S. Air Force | \$752,426 |
| Law School Juvenile Rights Advocacy Project/Girls Justice Initiative | Annie E. Casey Foundation | \$91,714 |
| Mathematics Professional Development/Teaching Coaching | Raytheon Company | \$100,000 |
| Physics Department Research Laboratory in Novel Electronic Materials and High Temperature Superconductivity | U.S. Department of Energy | \$1,918,000 |
| Political Science Institute for the Study of Politics and Religion | The Lynde and Harry Bradley Foundation | \$100,000 |
| Psychology Department The Role of Culture and Economics in the Consumption of Bushmeat | National Science Foundation | \$154,659 |
| School of Education Culturally Meaningful Adventure Stories The Relationship among District Level Support, Classroom Use and Student Outcomes | National Science Foundation U.S. Department of Education | \$333,238 \$655,285 |
| School of Management/Center for Corporate Citizenship Transforming Corporate Involvement with Low Income Individuals | Ford Foundation | \$500,000 |
| School of Nursing Efficacy of Non-Drug Protocols to Aid Sleep in Dementia | National Institute on Aging | \$153,000 |
| School of Social Work Cash and Counseling Demonstration and Evaluation | Univ. of Maryland/Robert Wood Johnson Foundation | \$184,968 |
| Center for Religion and American Public Life Moral and Normative Aspects of School Choice | Smith Richardson Foundation | \$122,679 |
| Social Welfare Research Institute Millionaires and the Millennium: The Emerging Material and Spiritual Determinants of Charitable Giving by Wealth Holders | Lilly Endowment, Inc. | \$174,585 |

University Research Institutes and Centers

Center for Child, Family, and Community Partnerships

The Center for Child, Family and Community Partnerships is an "outreach scholarship" program that fosters collaboration among Boston College faculty and students, and community leaders in health care, social service, economic development, and education. The goal of the participants is to create stronger, healthier, and more economically sound communities. The Center offers technical assistance, program evaluation, needs assessment, training, and consultation to community organizations. Web site: <http://www.csteep.bc.edu/cfcfp/>

Center for Corporate Citizenship at Boston College

The Center for Corporate Citizenship is the leading organization helping corporations define their role in the community. Part of Boston College's Carroll School of Management, the Center provides leadership in establishing corporate citizenship as a business essential, so all companies act as economic and social assets to the communities they impact by integrating social interests with other core business objectives. The Center offers research and development on corporate citizenship; publications that include an on-line newsletter, research reports, and white papers; executive education programs, including on-site and custom programs and a Certificate program in corporate community relations; convenings including the annual International Corporate Citizenship Conference, workshops, roundtables, and regional meetings; consulting to help companies develop and implement strategic citizenship plans; a corporate membership program; a website that provides an on-line meeting place for the corporate citizenship community. Web site: <http://www.bc.edu/corporatecitizenship>

Center for East Europe, Russia, and Asia

The Center's programs encourage faculty and students to participate in interdepartmental endeavors on both the graduate and undergraduate levels. Participating faculty come from the Departments of Fine Arts, History, Philosophy, Political Science, Slavic and Eastern Languages, and Theology and offer over eighty academic courses connected with the study of the culture, history, and political life of East Europe, Russia, the Balkans, and Central Asia.

Center for Ignatian Spirituality

The Center for Ignatian Spirituality is a university operation that offers faculty and staff a resource to carry on the needed dialogue between the values that constitute Boston College and the pluralism that characterizes our contemporary culture. The Center initiates its own programs, inviting faculty and staff to pursue a particular topic; gives support to the Ignatian Society, a student group committed to integrating Ignatian spirituality into the lives of its members and offering other students opportunities to do the same; sponsors retreats and reflection opportunities for faculty and staff; and has a wide range of national and international commitments to other institutions in their efforts to integrate Ignatian spirituality into their educational endeavors. Web site: <http://www.bc.edu/igspirit>

Center for International Higher Education

Established in 1995 and housed in the Lynch School of Education, the Center for International Higher Education (CIHE) is a research and service agency providing information, publications and a sense of community to colleges and universities worldwide. The main focus of the Center is on academic institutions in the Jesuit tradition, but other universities receive its publications and are part of an informal network. There is a special concern with the needs of academic institutions in the developing countries of the Third World. Web site: http://www.bc.edu/bc_org/avp/soe/cihe

Center for Nursing Research

The CNR's central purpose is to serve as an institutional resource for faculty and students in the School of Nursing, the Boston College community, and the greater Boston nursing and health care community. Three interrelated but separate goals support the purpose of the CNR: (1) to strengthen the research productivity of faculty in the School of Nursing, (2) to increase intradisciplinary and interdisciplinary research and scholarship, and (3) to communicate research findings to facilitate research utilization in nursing practice and in educational settings. The Center serves as a repository for the Cathy J. Malek Research Collection as well as books and other materials related to quantitative and qualitative research methods, data analysis, grant-seeking and grant-writing. Web site: http://www.bc.edu/bc_org/avp/son/cntrngresearch/nsgresearch.html

Center for Retirement Research

The Center for Retirement Research at Boston College was established through a 5-year \$5.25 million grant from the Social Security Administration in 1998. The goals of the Center are to promote research on retirement issues, to transmit new findings to the policy community and the public, to help train new scholars, and to broaden access to valuable data sources. The Center is the headquarters for researchers and experts in affiliated institutions including MIT, Syracuse University, the Brookings Institution, the Urban Institute, and the National Academy of Social Insurance. The Center is structured around a research team of interdisciplinary backgrounds in actuarial science, demography, economics, economic history, finance, political science, sociology and social work, and possesses a breadth of knowledge on retirement issues and institutions virtually unmatched in the field. As the nation confronts the myriad issues surrounding how best to ensure adequate retirement income for an aging population, the Center's researchers and experts explore possible policy changes related to Social Security, private pensions, and other sources of retirement income. Web site: <http://www.bc.edu/crr>

Center for the Study of Testing, Evaluation, and Educational Policy (CSTEETP)

CSTEETP is an educational research organization located in the Lynch School of Education. Since its inception in 1980, CSTEETP has conducted international comparative research on educational achievement and testing, evaluation and public policy studies to improve school assessment practices. CSTEETP researchers work on both small and large scales - individual schools, districts, and states - to advance educational testing practices and policies and to improve the quality and fairness of education. The Scanning Services Center (SSC) at CSTEETP serves the needs of the Boston College community. It provides scanning services for departments and individuals, including scanning for course evaluations, course tests, and research surveys. CSTEETP also administers national examinations, specifically the Miller Analogies Test (MAT), Graduate Record Examination (GRE) subject tests, Medical College Admission Test (MCAT) and Professional Examination Program Tests. Web site: <http://www.csteep.bc.edu>

Center for Work and Family

The Boston College Center for Work and Family is a research organization within the Carroll School of Management that promotes employer responsiveness to families. The Center's guiding vision is to serve as the bridge linking the academic research community to the workplace. To gain increased understanding of the challenges faced by both employees and employers in meeting the goals of the individual and the enterprise, the Center conducts basic and applied research studies and analyzes secondary information sources. The Center's initiatives fall into three broad categories: research, employer partnerships, and information services. Web site: <http://www.bc.edu/cwf>

International Study Center

The International Study Center at the Lynch School of Education is dedicated to conducting comparative studies in educational achievement. Principally, it serves as the center for international studies in mathematics, science, and reading—the Trends in International Mathematics and Science Study (TIMSS) and the Progress in International Reading Literacy Study (PIRLS). Web site: <http://isc.bc.edu/>

Institute of Medieval Philosophy and Theology

The Institute is a center that unites the teaching and research efforts of the faculty members in the Philosophy and Theology Departments who specialize in medieval philosophy and theology. Doctoral degrees are awarded in the Theology or Philosophy departments and students matriculate in one of these two departments. The focus of the Institute is on the relationship between medieval philosophy and theology and modern continental philosophy and theology.

Institute for Scientific Research

The Institute for Scientific Research (ISR), established in 1954, boasts a highly proficient team of research scientists, engineers, mathematicians, and computer scientists. Over the course of its history, the Institute has utilized a diversity of knowledge to develop highly sophisticated techniques for analyzing raw scientific and engineering data and presenting it in meaningful and useful ways. Using state-of-the-art analytical tools and technology including computer-generated modeling, the Institute is a forerunner in scientific data analysis and interpretation

using statistical data analysis, digital signal processing and image processing; mathematical signal modeling; animated visualization of real and simulated data; the manipulation and interpretation of scientific images; and the design of specialized databases, data management techniques and interactive scientific software.

Web site: <http://www.bc.edu/isr>

Institute for the Study and Promotion of Race and Culture

The Institute for the Study and Promotion of Race and Culture (ISPRC) was founded in 2000 at Boston College, under the direction of Dr. Janet E. Helms, to promote the assets and address the societal conflicts associated with race or culture in theory and research, mental health practice, education, business, and society at large. The ISPRC attempts to solicit, design, and disseminate effective interventions with a proactive, pragmatic focus. Each year the Institute will address a racial or cultural issue that could benefit from a pragmatic scholarly focus through its Diversity Challenge conference.

Web site: <http://www.bc.edu/isprc>

Irish Institute

The Irish Institute at Boston College was established by the University in 1992 and utilizes cross-campus resources to create and provide programs in areas such as business, government and education. We believe that this mission—and the personal, educational, and corporate exchanges it facilitates—serves to promote a more lasting peace on the island of Ireland and can provide models for the delivery of good government that can be applied to many regions around the world. The Irish Institute currently offers programs in education, business management, and political leadership. In recent years, the Institute has applied its programming models, and expertise with the problems confronting divided societies, to embrace participants from the Middle East and North Africa.

Web site: <http://www.bc.edu/irishinstitute>

Jesuit Institute

The Jesuit Institute was established in 1988 to contribute towards the response to the question of identity. The Institute, initially funded by the Jesuit Community at Boston College, is not an additional or separate academic program. It is rather a research institute which works in cooperation with existing schools, programs and faculties, primarily but not exclusively, at Boston College. Within an atmosphere of complete academic freedom essential to a university, the Institute engages positively in the intellectual exchange that constitutes the University. Its overarching purpose is to foster research and collaborate interchange upon those issues that emerge at the intersection of faith and culture. Through its programs, the Institute does this in two ways: by supporting the exploration of those religious and ethical questions raised by this intersection and by supporting the presence of scholars committed to these questions.

Web site: http://www.bc.edu/bc_org/avp/acavp/jesin/

Lonergan Center

Studies related to the work of the Jesuit theologian and philosopher Bernard Lonergan (1904-1984) are fostered and advanced in the Lonergan Center at Boston College. Inaugurated in 1986, the Center houses a growing collection of Lonergan's published and unpublished writings as well as secondary materials and reference works, and it also serves as a seminar and meeting room. Boston College sponsors the annual Lonergan Institute, which provides resources, lectures, and workshops for the study of the thought of Bernard Lonergan, S.J.

Web site: <http://www.bc.edu/lonergan>

Mathematics Institute

The Boston College Mathematics Institute was established in 1957 as a unit separate from the Mathematics Department to assist in the effort to improve the content and instructional practice of mathematics at school level. In the 1960's and 1970's the primary focus of the Institute was on providing veteran teachers with renewal programs and professional development opportunities to update and deepen their background in mathematics. The National Science Foundation was a major source of funding. Concurrently, Institute staff developed some supplementary instructional materials to use with students in the grades K-12. At present, the Mathematics Institute offers professional enhancement courses for teachers in the summers at Boston College and other sites. Other current projects include research studies and content development related to school level mathematics concerns.

Web site: <http://www.bc.edu/mathinst>

Boisi Center for Religion and American Public Life

The Center for Religion and American Public Life was founded to bring together high quality research and scholarship on religion to bear on issues of public policy in America. The Center's goal is not to advance any ideological agenda, whether liberal or conservative. The Center seeks instead to be the sponsor of dialogue and discussion which brings together people whose primary concerns are religious with people whose primary concerns are political, in the belief that they will find common ground. The main goals of the Center include the promotion of scholarship dealing with religion and public life, faculty and student development at Boston College, and outreach activities that contribute to a more robust public discussion of critical issues.

Web site: http://www.bc.edu/bc_org/research/rap/

Small Business Development Center

The Small Business Development Center (SBDC) provides managerial, financial and technical assistance and training to small business people in the Greater Boston area. Prospective and active small business people can receive one-on-one counseling and consultative assistance in a range of business areas such as finance, marketing, planning, operations, accounting and controls. The SBDC also offers specially designed small business management training workshops. Topics include writing a business plan, financial planning, marketing, strategic planning, cash flow and general management as well as other varied topics.

Web site: http://www.bc.edu/bc_org/avp/csom/executive/sbdc

Social Welfare Research Institute

The Social Welfare Research Institute (SWRI) is a multidisciplinary research center specializing in the study of spirituality, wealth, philanthropy, and other aspects of cultural life in an age of affluence. SWRI is a recognized authority on the meaning and practice of care, on the patterns and trends in individual charitable giving, on philanthropy by the wealthy, and forthcoming \$41 trillion wealth transfer. In 2001-2002, SWRI has published research on a new donor-centered approach to fundraising that moves away from the "scolding model"; on the spiritual questions raised by wealth; on survey methodology; on the Boston Area Diary Study of formal and informal care in daily life; and on financial transfers to family and philanthropy by the wealthy. Other areas of research include the "new physics of philanthropy," which identifies the economic and social-psychological vectors inclining wealth holders toward philanthropy, among them, an entrepreneurial disposition, identification, association, and gratitude. One new research direction is reconceptualizing planned giving as part of a broader process of gift-planning and life-planning. Another is developing and training others to use a discernment methodology for guiding wealth holders through a self-reflective process of decision-making about wise choices in finances and philanthropy, and based on the Ignatian principles of liberty and inspiration. Over the past eighteen years SWRI has received generous support from the T.B. Murphy Foundation Charitable Trust; from the Lilly Endowment, Inc.; the Indiana University Center on Philanthropy; and the W. K. Kellogg Foundation.

Web site: <http://www.bc.edu/swri>

Weston Observatory

Weston Observatory, formerly Weston College Seismic Station (1928-1949), is a part of the Department of Geology and Geophysics of Boston College. Located 10 miles from the main campus, the Observatory is an interdisciplinary research facility of the Department, and a center for research in the fields of geophysics, geology, and related fields. Weston Observatory was one of the first participating facilities in the Worldwide Standardized Seismograph Network and operates a twelve-station regional seismic network that records data on earthquakes in the northeast, as well as distant earthquakes. The facilities at Weston Observatory offer students a unique opportunity to work on exciting projects with modern, sophisticated, scientific research equipment in a number of different areas of scientific and environmental interest.

Web site: <http://www.bc.edu/westonobservatory>