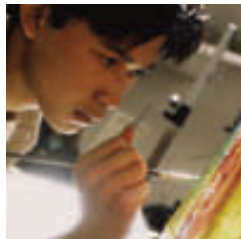


Other ways to help BC students

You may want to partner in other ways that benefit BC students:

- Participate in the Boston College Internship Program
- Host site visits at your organization
- Volunteer to educate students on career-related matters by sharing your knowledge through our employer-in-residence program, resume critiques, practice interviews, and panel presentations
- Come to our annual fall Career Fair

And, of course, be a part of our Recruiting Program by listing jobs for our students through EagleLink and, if you wish, interview BC students on Campus



Transforming
students into
professionals



Boston College Career Center

**140 Commonwealth Avenue
Chestnut Hill, MA 02467**

Phone: 617-552-3430
carctr@bc.edu

Boston College Career Center

**CORPORATE
PARTNERSHIPS
IN
CAREER EDUCATION**

A PROGRAM CONTRIBUTING TO THE
PROFESSIONAL DEVELOPMENT OF
BOSTON COLLEGE STUDENTS

Boston College Career Center
140 Commonwealth Avenue
Chestnut Hill, MA 02467

617-552-3430



CORPORATE PARTNERSHIPS IN CAREER EDUCATION

The Boston College Career Center continually seeks to educate students regarding their career and professional development through a variety of ways and technological applications. The result is a better prepared, professionally oriented candidate for your organization.

The Career Center is committed to providing quality career education programs and services to our students. Our mission is to guide our students as they mature into professional, ethical and responsible men and women. We ask that you partner with us in achieving that goal while raising awareness of your organization among our students.

Please consider being a member of the Corporate Partnerships in Career Education Program. If you need further information or have questions, feel free to contact me. I would be delighted to help you.

Cordially,

Theresa Harrigan
Director
Boston College Career Center

theresa.harrigan@bc.edu
617-553-3435

Three Levels of Partnership

Level 1 Corporate Executive

\$5,000

Level 2 Corporate Partner

\$2500

Level 3 Corporate Associate

\$1000

Your donation as a participating partner will be used for student programs and educational and job search systems.

Some Examples

Corporate Executive

- **Guest Speakers and Authors**
- **Innovative Technological Applications**
- **Internship Stipends**
- **Series of Seminars and Workshops**

Corporate Partner

- **Networking Nights**
- **Career Information & Exploration Events**
- **Etiquette Dinners**

Corporate Associate

- **Lunch & Learn Seminars**
- **Careers In ... Seminars**
- **Career Conversations with Alumni**

Acknowledging Your Contribution

\$5,000 Corporate Executives

- **Corporate Name Listed on the Career Center Website**
- **Statement of Appreciation at the Event**
- **Corporate Logo on the Website**
- **Recognition and Complimentary Registration for the Career Fair**

\$2,500 Corporate Partners

- **Corporate Name Listed on the Career Center Website**
- **Statement of Appreciation at the Event**
- **Corporate Logo on the Website**

\$1,000 Corporate Associates

- **Corporate Name Listed on the Career Center Website**
- **Statement of Appreciation at the Event**

Boston College Career Center

140 Commonwealth Avenue
Chestnut Hill, MA 02467

Phone: 617-552-3430
carctr@bc.edu