



Stay in touch...

*Keep your contact information current within the Alumni
Online Community*

www.bc.edu/friends/alumni/community/

NETWORKING NIGHT FOR BC ALUMNI IN THE ARTS

February 11, 2007

Foley Gallery

Upright Citizens Brigade Theatre

Save the Date

Please join us for Alumni Evening at the Arts

Festival, Saturday, April 28, 2007.

Presented By:

The Boston College Arts Council

In partnership with

The Boston College Alumni Association

GO BC!

Program of Events

5pm—7pm *Reception at the Foley Gallery*
A contemporary photography gallery
owned by Michael Foley '84

7:30pm—9pm *ASSSSCAT 3000 at*
Upright Citizens Brigade Theatre
Featuring UCBT founder and NBC's
SNL star, Amy Poehler '93

*Making connections and finding opportunities in the arts and entertainment industry can be quite a challenge. So the Boston College Arts Council and the Alumni Association have collaborated to create this event – **Networking Night for BC Alumni in the Arts** – to give BC alumni an edge – more connections and more opportunities. We hope that you find this event useful in your career endeavors and that you can enjoy the experience of getting to know other BC artists from various classes.*



**Lisa Hayes
Williams**
A&S '03

GRADUATE SCHOOL(S) AND CONTINUING EDUCATION

NYU

LOCATION

New York, NY

PROFESSION(S)

Gallerist and Independent Curator

PROFESSIONAL HIGHLIGHTS/CREDITS/ORGANIZATIONS

Current employment at midtown art gallery. Curated: *Valhalla*, traveling exhibition (forthcoming 2007); *new world orders*, Experimental Gallery July 2006; *Group Shows*, Experimental Gallery May and October 2006; *Identities: Lost in Translation*, Artists Space May 2005. Past work experience at Artists Space, PS1, Axel Raben Gallery, New Britain Museum of American Art. Assistant to artists Spencer Tunick, 2005, and Christo and Jeanne-Claude, Gates Project, 2005.

BC CONNECTION

BC Fine Arts Slide Library. International study at Lorenzo d' Medici Art School, Florence, Italy 2002.

PREFERRED CONTACT INFO

lisahayeswilliams@yahoo.com. (860) 306-5605. 419 3rd Avenue, #3D New York, NY 10016



Timothy Stack A&S '78

Special Thanks

The BC Alumni Association and BC Arts Council would like to thank Amy Poehler and Michael Foley for their support in making this event possible.

GRADUATE SCHOOL(S) AND CONTINUING EDUCATION
LOCATION Santa Barbara, CA
PROFESSION(S) Comedian & Writer
PROFESSIONAL HIGHLIGHTS/CREDITS/ORGANIZATIONS Currently MY NAME IS EARL & TONIGHT SHOW WITH JAY LENO, Created and starred: SON OF THE BEACH, NIGHTSTAND WITH DICK DIETRICK
BC CONNECTION Dramatics Society
PREFERRED CONTACT INFO C/O Deetown Productions, 1026 Coast Village Rd. #23, Santa Barbara, CA 93108

Upright Citizens Brigade Theater

307 W. 26th Street, New York

212-366-9176

www.uprightcitizens.org

Amy Poehler '93

With help of theater managers Eli Newell and Alex Sidtis

Foley Gallery

547 W. 27th Street, New York

www.foleygallery.com

212-244-9081

Michael Foley '84

About The Boston College Arts Council

The mission of the Boston College Arts Council is to make the experience of art available and meaningful to the Boston College student body and to the wider university community, and to share this with the greater Boston and international communities. The members of the BC Arts Council work to increase the visibility of the arts at Boston College, improve academic programs in the arts, enhance Boston College's national academic stature, strengthen participation in the arts, cultivate spaces for the arts on the BC campus, and encourage the commitment to the arts within the BC community. The Council is composed of a committee of Boston College faculty and administrators representing all of the academic departments in the arts as well as student organizations, the Alumni Association, and the University administration.

The Arts Council organizes the annual Arts Festival on campus, presents "Career Night for the Arts" and other career programs for BC student artists, and publishes the bi-annual arts calendar and monthly email "BC Arts Spotlight".

Please let us know about your career pursuits and put the BC Arts Council on your own artist mailing list. We want to stay in touch with you and hear what you are up to! If you might be interested in assisting BC students as they start new careers in the arts, please send an email to the address below. We look forward to hearing from you!

Contact Information for the BC Arts Council:

Program Administrator, Cathi Ianno Fournier '89, '96

Boston College Arts Council

140 Commonwealth Avenue

Chestnut Hill, MA 02467

arts@bc.edu ~ 617-552-4935 ~ www.bc.edu/arts

To join the BC Arts Calendar mailing list, visit www.bc.edu/artssubscribe



Kristina Smarz **A&S '98**

GRADUATE SCHOOL(S) AND CONTINUING EDUCATION

LOCATION

Boston, MA

PROFESSION(S)

Actor, Designer, Director, Improviser, Teacher, Event Planner

PROFESSIONAL HIGHLIGHTS/CREDITS/ORGANIZATIONS

Ran program as well as developed curriculum, produced, directed and designed full-scale musical productions cast with physically disabled youth. Director of *Bye-Bye Birdie*, *Little Shop of Horrors*, *You're a Good Man Charlie Brown*, *Unattended Baggage* and *Felt!* (improvised puppet show). ImprovBoston University grad; IB cast member since 2004, director/founder/performer with "Choking Victim;" Williams-town Theatre Festival alum. Most recently seen in *First Night Boston*, *Theatresports*, *Girls Night Out*, *Luv Boat*, *Waiting for the Bus*, *Guys and Dolls*.

BC CONNECTION

Dramatics Society; Pres. '97-'98; lived in Robsham; Hello Shovelhead

PREFERRED CONTACT INFO

ksmarz@gmail.com



Brian Sloan

A&S '88

GRADUATE SCHOOL(S) AND CONTINUING EDUCATION

NYU Tisch – Grad Film, MFA 1994

LOCATION

New York, New York

PROFESSION(S)

Writer/Director

PROFESSIONAL HIGHLIGHTS/CREDITS/ORGANIZATIONS

PROM QUEENS (2008)—Feature
WTC VIEW (2006)—Feature (TLA Releasing)
Tale of Two Summers (2006)—Novel (Simon & Schuster)
A Really Nice Prom Mess (2005)—Novel (Simon & Schuster)
COOKIN IN BROOKLYN (2003)—TV (Discovery Channel)
BOYS LIFE 4 (2003)—Feature (Strand Releasing)
MEN ON MEN 7 (2000)—Short Story (Penguin)
I THINK I DO (1998)—Feature (Strand Releasing)
BOYS LIFE (1995)—Feature (Strand Releasing)
NOT THE ONLY ONE (1994)—Short Story (Alyson)

BC CONNECTION

WZBC-FM (News & Public Affairs)
Boston College Screaming Eagles Marching Band

PREFERRED CONTACT INFO

me@briansloan.com; www.briansloan.com

Boston College Alumni Association

For nearly 125 years, the Boston College Alumni Association has provided services and benefits to support our 145,000 graduates worldwide. With programs ranging from career networking to community service, and continuing education to social gatherings, the Association offers many opportunities for you to develop a deeper, lifelong connection to BC. For more information, go to www.bc.edu/alumni.

For NYC chapter news and events, visit us online at www.bc.edu/chapters/newyorkcity.

Boston College Career Center Career Services for Alumni

Whether you are just beginning your career, thinking about changing jobs, or exploring a new career field, the BC Career Center is here to provide the assistance you need. Local alumni are always welcome to visit the Career Center for individual assistance and to use our resources. Alumni who are not close to the Boston area have access to a wealth of services through our website <http://careercenter.bc.edu>. Click on the alumni link for information about reciprocity, the alumni jobs database, the Career Network and more.

The Career Network is a great way to tap into the BC community. Alumni are encouraged not only to use it, but to join it so that students and other alumni can learn from your experiences.

Boston College Career Center

38 Commonwealth Avenue

Chestnut Hill, MA 02467

617-552-3644

<http://careercenter.bc.edu>



Michael Foley
A&S '84

GRADUATE SCHOOL(S) AND CONTINUING EDUCATION San Francisco State University
LOCATION New York, New York
PROFESSION(S) Photographer, Educator, Gallery Owner
PROFESSIONAL HIGHLIGHTS/CREDITS/ORGANIZATIONS Michael Foley opened Foley Gallery in the fall of 2004 after 15 years of working with notable photography galleries including Fraenkel Gallery, Howard Greenberg Gallery and Yancey Richardson Gallery. He is on the faculty of Parsons School of Design and the School of Visual Arts where he teaches and lectures on issues in contemporary photography.
BC CONNECTION Big geek at WZBC.
PREFERRED CONTACT INFO michael@foleygallery.com or 212-244-9081

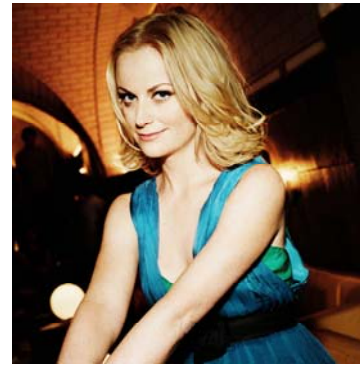


Lorenda M. Robinson
A&S '94

GRADUATE SCHOOL(S) AND CONTINUING EDUCATION
LOCATION New York City, NY USA
PROFESSION(S) Singer/Songwriter
PROFESSIONAL HIGHLIGHTS/CREDITS/ORGANIZATIONS As one half of the stellar Nu-Jazz Duo Brown Baby Girl (self-titled debut Cd released Feb 2006), Ms. Robinson recently performed at the world renown Blue Note (New York City, NY). Her vocal and writing prowess were featured on the "Infectious" album by underground hip-hop ingénue DJ Spinna (May 2001 Beyond Real Records™). She also makes a glowing guest appearance on the highly acclaimed debut album "Better Days" from Expansion Records ™ artist James Day (June 2006). Additionally, Brown Baby Girl received a favorable review by Gail Mitchell in the November 26, 2006 issue of Billboard Magazine.
BC CONNECTION Voices of Imani, Mistress of Ceremonies of Black Family Wknd Fashion Show (1992 & 1993) Coordinated Black Family Wknd Fashion Show 1994 and served as Mistress of Ceremonies
PREFERRED CONTACT INFO email: lorenda@brownbabygirl.com phone: 203-253-1816 Manager: Dara F. Lovett, dflovett@brownbabygirl.com , phone: 215-275-5213 websites: http://www.brownbabygirl.com and http://www.myspace.com/brownbabygirlmusic

Brian J. O'Connell

A&S '81



Amy Poehler

A&S '93

GRADUATE SCHOOL(S) AND CONTINUING EDUCATION Guest lecturer at NYU, SVA, Parsons & Pratt
LOCATION New York, NY
PROFESSION(S) Animator, Producer, Director, Writer, Designer
PROFESSIONAL HIGHLIGHTS/CREDITS/ORGANIZATIONS Film: <i>'Chicago 10'</i> (Sundance '07), <i>'What Would Jesus Buy'?</i> (South By Southwest '07), <i>'The White Countess'</i> (Merchant Ivory '05), <i>'The Stepford Wives'</i> (Paramount '03). TV: <i>Saturday Night Live</i> , <i>TV Funhouse</i> (Comedy Central), <i>Caroline in the City</i> , various kids' shows on Nickelodeon, PBS, Cartoon Network, Disney/ABC. Co-Created <i>'Ghost Foot'</i> , an anime comedy pilot for Comedy Central. Numerous TV commercials & broadcast design campaigns. Illustrations for NY Times Op Ed page. Founded Asterisk Animation in 2003. Awards: Emmy's, Clio's, BDA's, Special screenings at: MoMA, The Art Directors Club of NY, Ottawa Int'l Film Festival.
BC CONNECTION WZBC DJ, Big Brother (for kids not George Orwell), Clamshell Alliance (No Nukes!), <i>Jean-Paul & The Sartres</i> 'existential' rock band
PREFERRED CONTACT INFO brian@asteriskpix.com , www.asteriskpix.com

GRADUATE SCHOOL(S) AND CONTINUING EDUCATION
LOCATION New York, New York
PROFESSION(S) ImprovComedy, Film
PROFESSIONAL HIGHLIGHTS/CREDITS/ORGANIZATIONS Feature cast member of NBC's Saturday Night Live (Anchor for Weekend Update). Founder, director, and regular performer at Upright Citizens Brigade Theater. Studied at Second City and ImprovOlympics in Chicago – student of Del Close. Film credits include: <i>Mean Girls (2004)</i> , <i>Wet Hot American Summer (2001)</i> , <i>Deuce Bigalow: Male Gigolo (1999)</i> . Notable TV appearances include: <i>Arrested Development</i> , <i>Late Night with Conan O'Brien</i> , <i>The Tonight Show with Jay Leno</i> , and <i>The Ellen DeGeneres Show</i> .
BC CONNECTION My Mother's Fleabag
PREFERRED CONTACT INFO

Shelagh Abate

A&S '97



Will Nunziata

A&S '06

GRADUATE SCHOOL(S) AND CONTINUING EDUCATION MM, the University of Massachusetts 1999; Graduate Diploma, The New England Conservatory of Music 2001
LOCATION New York, New York
PROFESSION(S) Musician, French Horn
PROFESSIONAL HIGHLIGHTS/CREDITS/ORGANIZATIONS Original Broadway Orchestra, <i>The Woman in White</i> , Principal Horn, City Music Cleveland and The Vermont Symphony Orchestra; Founding Member, The Triton Brass Quintet, Appearances on The Today Show, Good Morning America, and A & E's Live! By Request. Featured on both of Trey Anastasio's solo CDs (Elektra Records). Performed regularly on Broadway's <i>Chitty Chitty Bang Bang</i> , <i>Sweet Charity</i> , <i>The Phantom of the Opera</i> , <i>Mary Poppins</i> . Faculty, Tanglewood Music Center. Adjunct Faculty, Boston College. Alumni, Tanglewood Music center 1998, The National Repertory Orchestra 1999.
BC CONNECTION Complete Band Geek. bOp!, Marching Band, Pep Band, Concert Band, Orchestra, etc.
PREFERRED CONTACT INFO 405 W. 54 th Street #4D NY NY 10019; shelaghshel@aol.com ; 917-608-4928; www.tritonbrass.org

GRADUATE SCHOOL(S) AND CONTINUING EDUCATION
LOCATION NYC area
PROFESSION(S) singer, actor, improv, sketch writer, director
PROFESSIONAL HIGHLIGHTS/CREDITS/ORGANIZATIONS 4-time soloist with the Boston Pops Symphony Orchestra, soloist with Cleveland Pops Symphony Orchestra, soloist at National Italian American Foundation's honoring Luciano Pavarotti, soloist at US Tennis Open, Sketch Writing & Improv at Upright Citizen's Brigade, 6 month apprenticeship at Broadway producing office "Richard Frankel Productions" on the show <i>Company</i> , currently writing an original musical piece as well as concerts with twin brother, Anthony.
BC CONNECTION Theatre (Council of Majors, Director of <i>Bat Boy: The Musical</i> , favorite roles include Judas in <i>Godspell</i> , Hucklebee in <i>The Fantasticks</i> , Ernst Ludwig in <i>Cabaret</i>), University Chorale, sang National Anthems at Sporting Events/ Graduation Ceremony, Appalachia, ran Boston Marathon for Campus School, Orientation Leader, Student Admissions Program, PULSE.
PREFERRED CONTACT INFO Email: wnunziata@gmail.com Phone: (914) 374-4646 Website: www.WillandAnthony.com Address: 1110 Clay Avenue; Pelham, NY 10803

Anthony Nunziata

A&S '06



Christina (Martinez) Barrett

A&S '03

GRADUATE SCHOOL(S) AND CONTINUING EDUCATION
LOCATION NYC area
PROFESSION(S) singer, actor, director, producer
PROFESSIONAL HIGHLIGHTS/CREDITS/ORGANIZATIONS Soloist with the Boston Pops Symphony Orchestra & Cleveland Pops Symphony Orchestra, soloist at National Italian American Foundation's honoring Luciano Pavarotti, Nat. Kennedy Center Directing Award, Improv at Upright Citizen's Brigade, apprenticeship at Broadway producing office "Richard Frankel Productions", currently writing an original musical comedy as well as concerts with twin brother, Will.
BC CONNECTION Theater Department (Director of Pinter's <i>The Collection</i> , favorite roles include Jesus in <i>Godspell</i> and Tommy in <i>The Who's Tommy</i>), University Chorale, Student Admissions, Kairos leader.
PREFERRED CONTACT INFO Email: AnthonyNunziata@gmail.com Phone: (914) 374-4628 Website: www.WillandAnthony.com Address: 1110 Clay Avenue; Pelham, NY 10803

GRADUATE SCHOOL(S) AND CONTINUING EDUCATION Circle in the Square Theater School, Class of '05
LOCATION New York
PROFESSION(S) Actress
PROFESSIONAL HIGHLIGHTS/CREDITS/ORGANIZATIONS Lead role in the graduation performance at Circle, credits include <i>Who Will Carry The Word?</i> (Circle), <i>Wet Socks</i> (TSI/Playtime Series), <i>Legend of Sleepy Hollow</i> (White Plains Performing Arts Center), <i>Revolver</i> (The Red Room); indie films include <i>Dog and Butterfly</i> (in production) and <i>After the Life</i> (pre-production).
BC CONNECTION Robsham box office, Council of Majors. Also performed in Mainstage, Workshop, and Dramatic Society productions
PREFERRED CONTACT INFO Christina-Barrett@hotmail.com



Susan Breen
A&S '91

GRADUATE SCHOOL(S) AND CONTINUING EDUCATION
MFA, School of Visual Arts, 1996
LOCATION
Black Rock, CT
PROFESSION(S)
Artist (Painter), represented by Woodward Gallery, NYC Art Editor, Post Road Magazine
PROFESSIONAL HIGHLIGHTS/CREDITS/ORGANIZATIONS
Gallery Representation: Woodward Gallery, NYC; Recipient of International Performing Arts' 2006 Arts Leadership Award; Paintings currently on view at the P.T. Barnum Museum, Bridgeport, CT (through March 1, 2007); Paintings have been shown in numerous venues on the East Coast, including Woodward Gallery, Black Rock Art Center, City Lights Gallery, Aljira Center for Contemporary Art, Gallery at Classic Stage Company, Gale Gates Gallery, Reggio Gallery, the Gallery at Roundabout, as well as the Huntsville Museum of Art, among others.
BC CONNECTION
Worked in the Boston College Art Gallery, and later in the McMullen Museum of Art.
PREFERRED CONTACT INFO
susan@susanbreen.net or (203) 470-5640



David H. McGrath
A&S '96

GRADUATE SCHOOL(S) AND CONTINUING EDUCATION
Wheelock College (1999, Master's Degree in Education)
LOCATION
Worcester, MA
PROFESSION(S)
Special Education Teacher / Author
PROFESSIONAL HIGHLIGHTS/CREDITS/ORGANIZATIONS
In the writing field, I have completed writing three scripts: Tragic Comic (about a young man struggling with a cancerous brain tumor and a drinking problem. Set at BC and based on events of my life.) Also, I have written scripts intended for use by The Simpsons and The Family Guy. As an author, I have two published books, E-lationship (a relationship between two teachers told through emails) and Poems from a Tragic Comic: Surviving Cancer, Drinking, and Women.
BC CONNECTION
At BC, I majored in psychology and sociology and victoriously completed a six month battle with a cancerous brain tumor.
PREFERRED CONTACT INFO
Email: TragicComic@aol.com Phone: 617-599-8308 Web Address: www.myspace.com/tragiccomicwriter Mailing Address: 32 Ruggles Street #2 Westboro, MA 01581



**Amy McLaughlin
Lemerande**
A&S '97



Ron Domingo
A&S '90

GRADUATE SCHOOL(S) AND CONTINUING EDUCATION

MFA in Acting from Trinity Rep Conservatory, 2002
Providence, RI

LOCATION

Marshfield, MA

PROFESSION(S)

Actor, Vocalist, Executive Director of KNIGHTHORE Theatre Company

PROFESSIONAL HIGHLIGHTS/CREDITS/ORGANIZATIONS

Amy co-founded KNIGHTHORSE Theatre Company in 2003 with her husband, Tyrus Lemerande. Amy and Ty met while they were performing together in Shendoah Shakespeare's Brave New World Tour. KNIGHTHORSE Theatre Company is a non-profit traveling Theatre Company that brings one and two person adaptations of Shakespeare to schools, festivals and communities throughout the world. KTC has brought its unique form of Shakespeare to 25 states and four foreign countries.

BC CONNECTION

Theatre Major, Dramatics Society, Contemporary Theatre, Resident Assistant '95-'97

PREFERRED CONTACT INFO

Phone: (617)962-6158
e-mail: amymcleme@comcast.net
web: www.knighthorse.org

GRADUATE SCHOOL(S) AND CONTINUING EDUCATION

LOCATION

New York, New York

PROFESSION(S)

Actor

PROFESSIONAL HIGHLIGHTS/CREDITS/ORGANIZATIONS

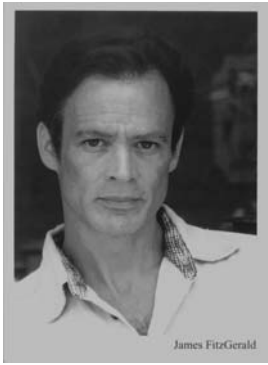
OBIE Award Winning Actor. Recently starred in Manhattan Theatre Club's production of *The American Pilot*. Other Off-B'way Theater: Warren Leight's *No Foreigners Beyond This Point* (Ma-Yi Theatre), *The Romance of Magno Rubio* (Long Wharf Theatre). TV: "Law & Order" ("SVU," "Criminal Intent," "Trial by Jury"), "Rescue Me" & "Kitchen Confidential." Film: *Tenderness*, *Robot Stories* (Slamdance) & *The Motel* (Sundance). Commercials: Bud Light (Zagar), Wendy's.

BC CONNECTION

Founder of The Heightsmen, Contemporary Theater (Che in *Evita*), Chorale, Dramatics Society, Liturgy Arts Group

PREFERRED CONTACT INFO

ron@rondomingo.com
Agency Contact: Nancy Clarkin
Hartig Hilepo Agency
54 W 21st St., Suite 610
New York, NY 10010
212.929.1772



Jim Fitzgerald
A&S '81



Saya April Hillman
A&S '00

GRADUATE SCHOOL(S) AND CONTINUING EDUCATION Goodman School of Drama
LOCATION New York
PROFESSION(S) Actor, Director, Playwright
PROFESSIONAL HIGHLIGHTS/CREDITS/ORGANIZATIONS Jeff Award - Best Supporting Actor - Assassins Jeff Award - Best Supporting Actor - Kismet Jeff Award (Nomination) - Best Actor - The Goodbye Girl Jeff Citation - Best Actor - Greek After Dark Award - Best New Work - Two For The Show
BC CONNECTION Co-Founder - My Mother's Fleabag, BCDS
PREFERRED CONTACT INFO Fitzjamie1@yahoo.com or James_FitzGerald@yahoogroups.com

GRADUATE SCHOOL(S) AND CONTINUING EDUCATION
LOCATION Chicago, IL
PROFESSION(S) Digital Editor, Filmmaker, Instructor (film production programs for low-income youth)
PROFESSIONAL HIGHLIGHTS/CREDITS/ORGANIZATIONS <i>dating rubik's cube</i> , "Best Short Documentary," Illinois International Film Festival; current project is a film on a group of kids from a low-income neighborhood in Chicago.
BC CONNECTION Ignacio Volunteer (Jamaica), Resident Assistant, Shaw Leadership Program, PULSE
PREFERRED CONTACT INFO Saya@macncheeseproductions.com; 773.267.1774; 3153 W. Wilson Avenue #2, Chicago, IL 60625; www.macncheeseproductions.com



Georgia Gleason

Nancy Gill Gleason

GRADUATE SCHOOL(S) AND CONTINUING EDUCATION
LOCATION Westfield NJ
PROFESSION(S) Manager (self) Actress (my daughter Georgia)
PROFESSIONAL HIGHLIGHTS/CREDITS/ORGANIZATIONS My daughter is a 13 year old triple threat, especially adroit comedian and impersonator. She has played to acclaim as Adele in "Jane Eyre, the Musical", Adelaide in "Guys and Dolls" and about to play Marty in Grease. Her first TV experience came on ABC Family. She has had a call back for Professional Performing Arts HS, and if accepted will become a NY resident next year. The attached picture is Georgia.
BC CONNECTION I was in University Chorale, BC Jazz Ensemble (vocalist)
PREFERRED CONTACT INFO nancy@scottgleason.com . For Georgia, call her father, Scott Gleason, at 908-698-2630 or sg@scottgleason.com .

Sean Patrick Flahaven A&S '95

GRADUATE SCHOOL(S) AND CONTINUING EDUCATION M.F.A. Musical Theatre Writing, NYU Tisch School of the Arts, 1997; M.F.A. Theatre Management, Brooklyn College, 2003
LOCATION New York, NY
PROFESSION(S) Theatre Producer, Writer, Composer, Orchestrator, Arts Journalist (Currently Director of Music & General Manager, Theatrical Rights Worldwide)
PROFESSIONAL HIGHLIGHTS/CREDITS/ORGANIZATIONS Performed in New York, New Jersey, Boston, Philadelphia, Baltimore, Delaware, Chicago, and the Abbey Theatre, Dublin. Produced over 100 shows, concerts, and workshops on and off-Broadway. A dozen projects with Stephen Sondheim. Countless new musicals with Adam Guettel, Michael John LaChiusa, Ricky Ian Gordon, others. Former music editor for MTI and R&H. Writer/editor for 12 years for <i>The Sondheim Review</i> , <i>Show Music</i> , <i>Playbill</i> , and (the former) Theatre.com; many liner notes for Nonesuch Records and PS Classics.
BC CONNECTION BC Bop, Symphony Orchestra, University Theatre, Presidential Scholars Program
PREFERRED CONTACT INFO spflahaven@aol.com , www.KnowsTheScore.com



**Cathi Ianno
Fournier
A&S '89**

GRADUATE SCHOOL(S) AND CONTINUING EDUCATION Boston College, MBA '96
LOCATION Chestnut Hill, MA
PROFESSION(S) Arts Administration, Event Planning, Arts Marketing, Musician (pianist)
PROFESSIONAL HIGHLIGHTS/CREDITS/ORGANIZATIONS BC Arts Festival Director – built festival audience from 1000 to 14,000 in seven years. BC Arts Council Project Director – manage career programs for student artists, publish arts calendar, and run special events. Assistant Director of Bands at BC from 1991-1999. Pianist at St. Linus Church in Natick. Board member & Annual Fund Chair, TCAN (The Center for Arts in Natick).
BC CONNECTION Contemporary Theatre (company director 1988-89), Pianist for LAG
PREFERRED CONTACT INFO ianno@bc.edu ; 617-552-6500



**Jennifer Garam
A&S '98**

GRADUATE SCHOOL(S) AND CONTINUING EDUCATION The Neighborhood Playhouse School of the Theatre - 1999
LOCATION Brooklyn, NY
PROFESSION(S) Writer, Writing Teacher
PROFESSIONAL HIGHLIGHTS/CREDITS/ORGANIZATIONS Wrote and performed in two one-act plays featured in Samuel French Festival, performed solo material at The Barrow Group Theatre, readings at The Lark, The Belt Theatre, Time Inc. Author Connection Series. Music articles featured in <i>Interview Magazine</i> . Writes the blog "One Writeous Chick" at www.writeouschicks.blogspot.com , and essays also appear in the online library of www.dailyom.com . As the founder of WRITEOUS CHICKS, teach writing workshops for women with an emphasis on self-care and personal development.
BC CONNECTION English Major, Theatre Minor, Committee for Creative Enactments
PREFERRED CONTACT INFO jeng@writeouschicks.com ; (917) 509-7564